

Aluminium support system for rainscreen cladding

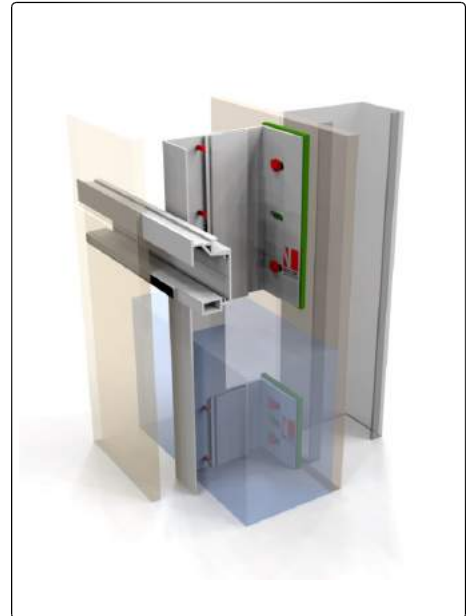
NV5 NVELOPE SYSTEM TRESPA TS300 SYSTEM

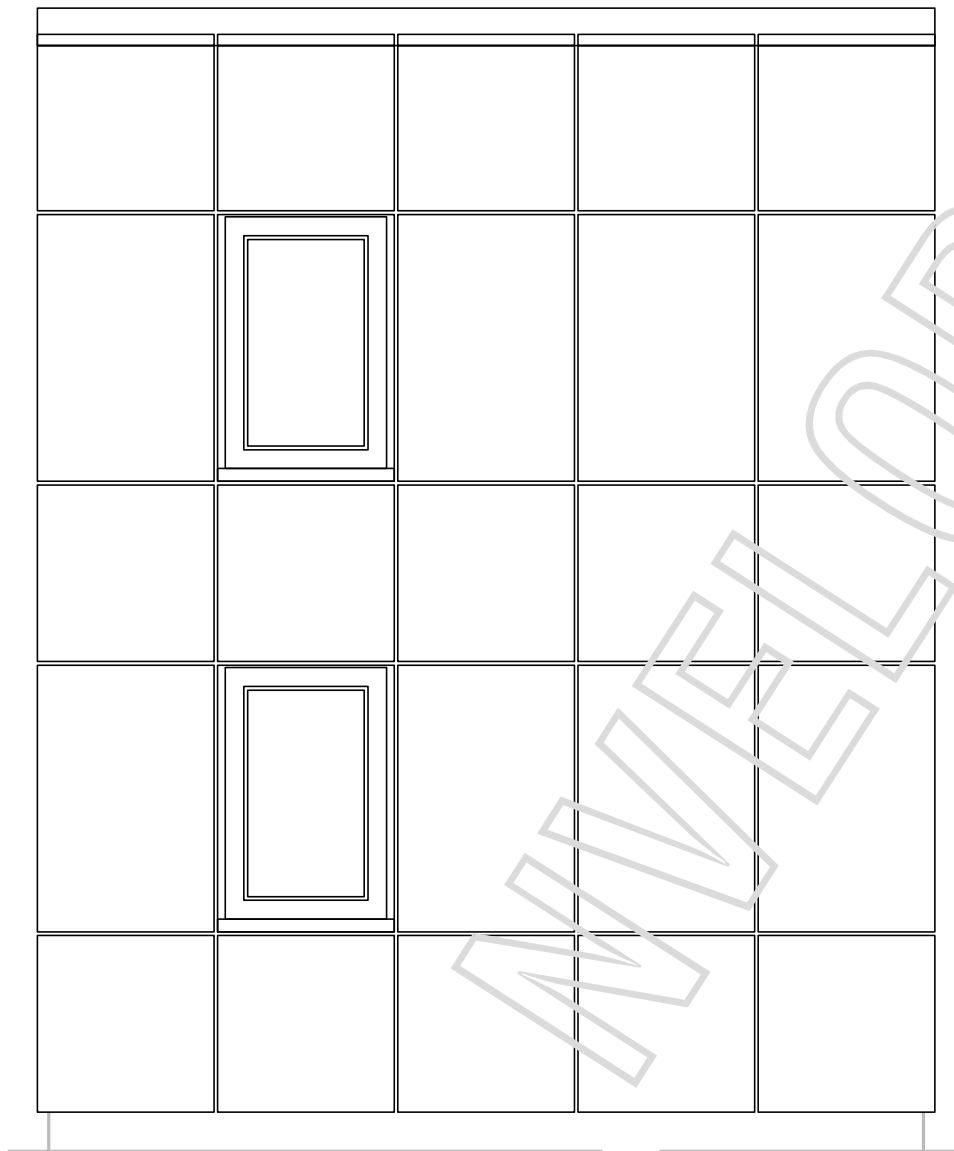
LEGEND:

- A - cladding
- B - joint profile
- C - clamp
- D - corner-profile
- F - window profile
- 1 - Wall
- 2 - NVELOPE - support bracket
- 3 - Stainless steel fixing
- 4 - Vertical timber
- 5 - Self drilling stainless steel screw SR2 4.2 x 16
- 6 - Vertical Timber Batten
- 7 - Thermal insulation
- 8 - Ventilation
- 9 - Timber carrier
- 10 - NVELOPE Thermal isolator
- 11 - Timber fixing screw

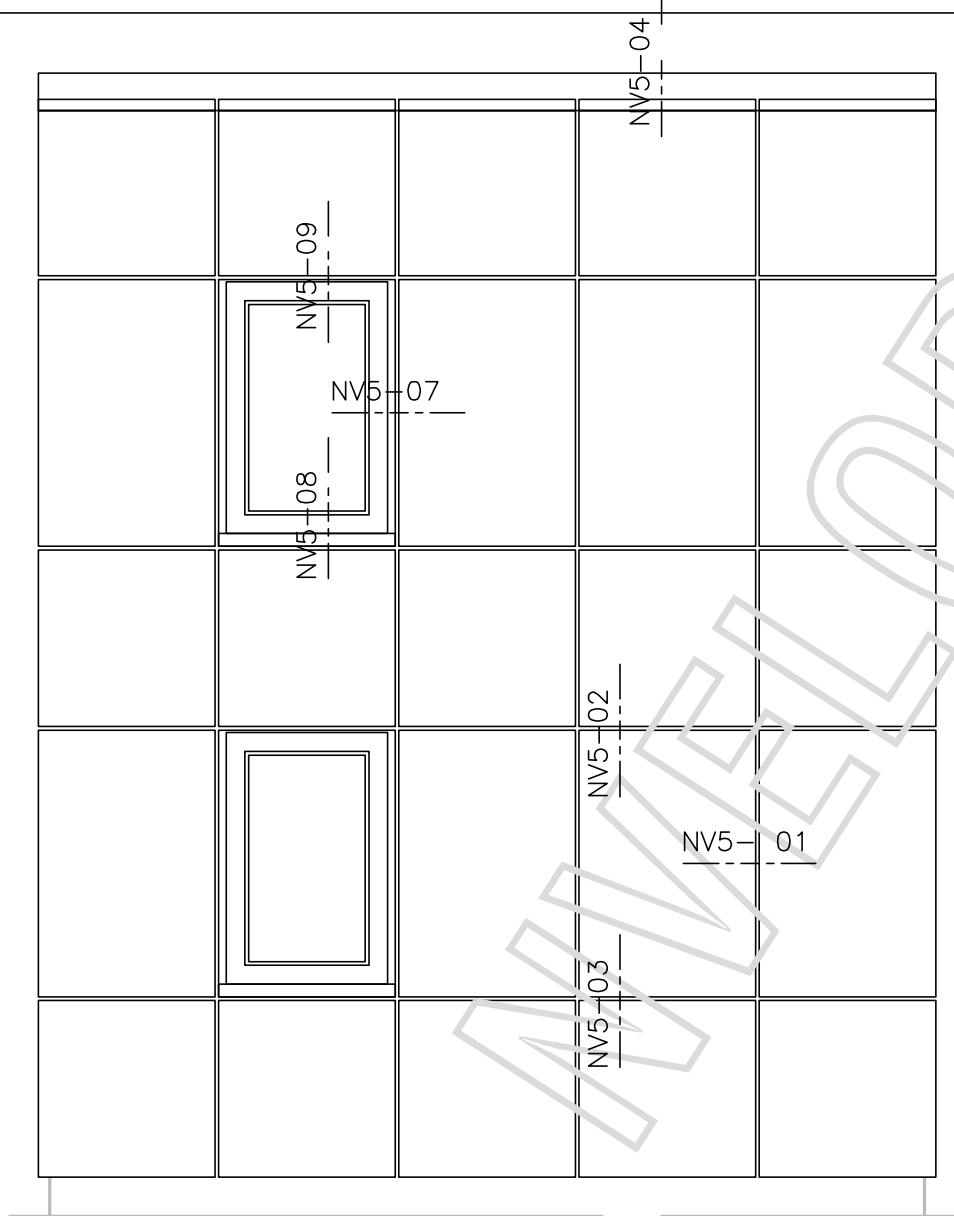
CONTENTS:

- NV5-01 Tolerances for Bracket Adjustment
- NV5-02 Cladding View Locations
- NV5-03 TS300 Profile Detail
- NV5-04 Trespa Machining Details
- NV5-05A Horizontal Section Board Joint
- NV5-05B Horizontal Section Board Joint
- NV5-06 Vertical Section Movement Joint
- NV5-07A Vertical Joint
- NV5-07B Vertical Joint
- NV5-08 Vertical Section at Base
- NV5-09 Vertical Section Parapit
- NV5-10 Vertical Section Window sill
- NV5-11 Horizontal Section Window Reveal with Trespa
- NV5-12 Horizontal Section Window Reveal with trim
- NV5-13A Vertical Section Window head Detail (version A)
- NV5-13B Vertical Section Window head Detail (version B)
- NV5-13C Vertical Section Window head Detail (version C)
- NV5-14 Horizontal Section Rail Positions
- NV5-15 Horizontal Section Internal Corner
- NV5-16 Horizontal Section External Corner

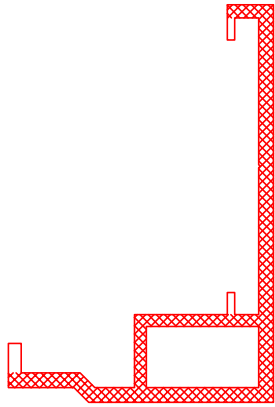




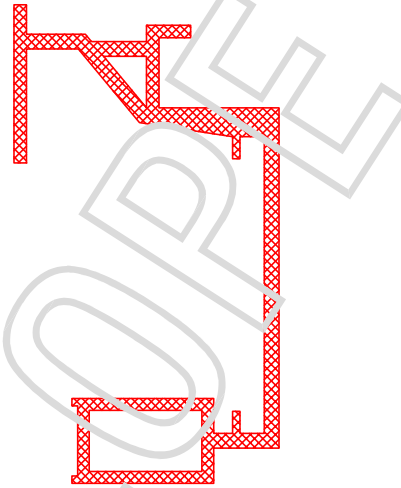
View of Cladding



View of Cladding



Starter profile



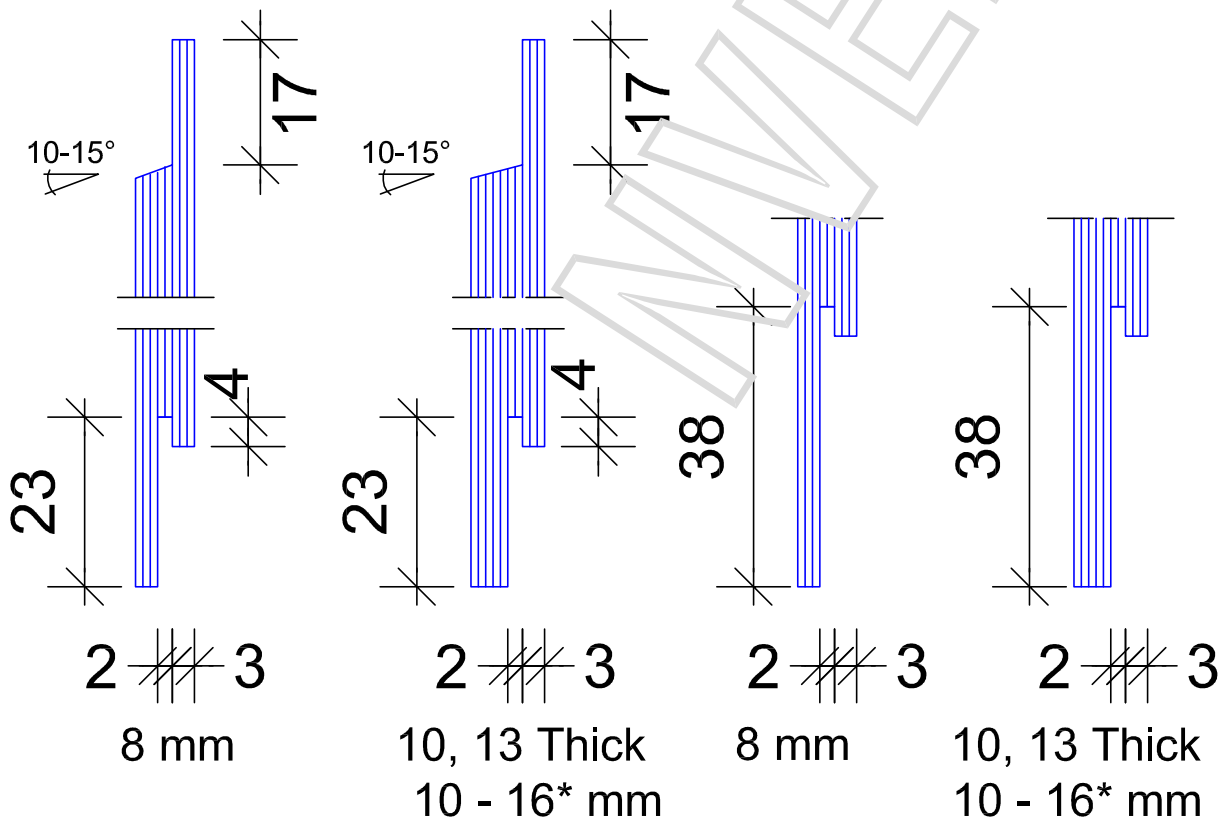
Support profile

Cladding thickness	wind normal area	wind corner area
8 mm	1,75 m	1,23 m
10 mm	1,56 m	1,10 m
13 mm	1,15 m	0,98 m

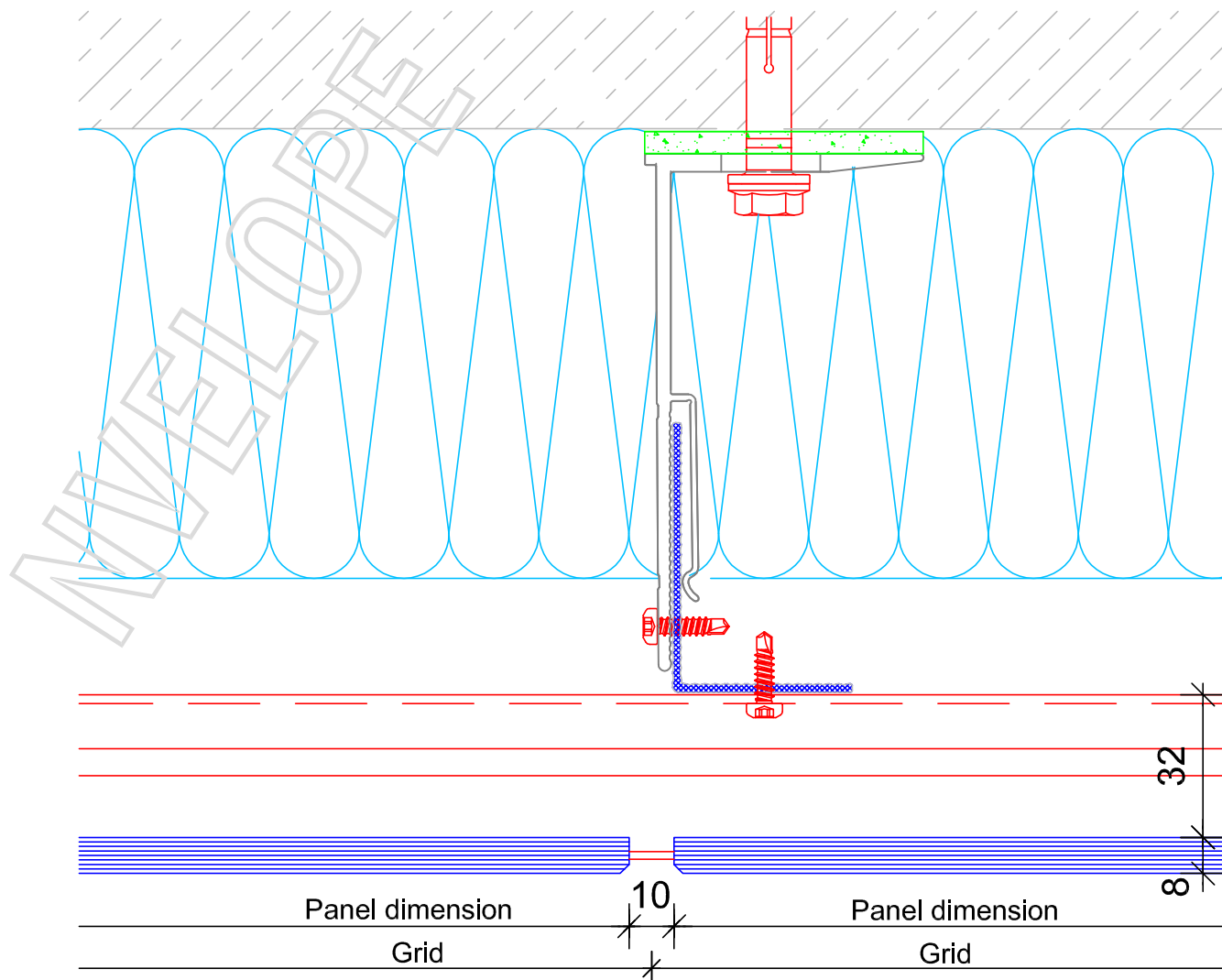
Windloads: Dynamic pressure $q = 0,80 \text{ kN} / \text{m}^2$ (in acc. to DIN 0-20 m)
Vertical distances of start- and support profiles are equal !

Thickness	Panel height	Panel length
8 mm	600 mm	3650 mm
10 mm	750 mm	3650 mm
13 mm	900 mm	3650 mm

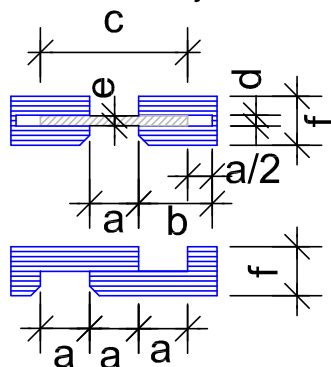
Panel forms



* Originals panels

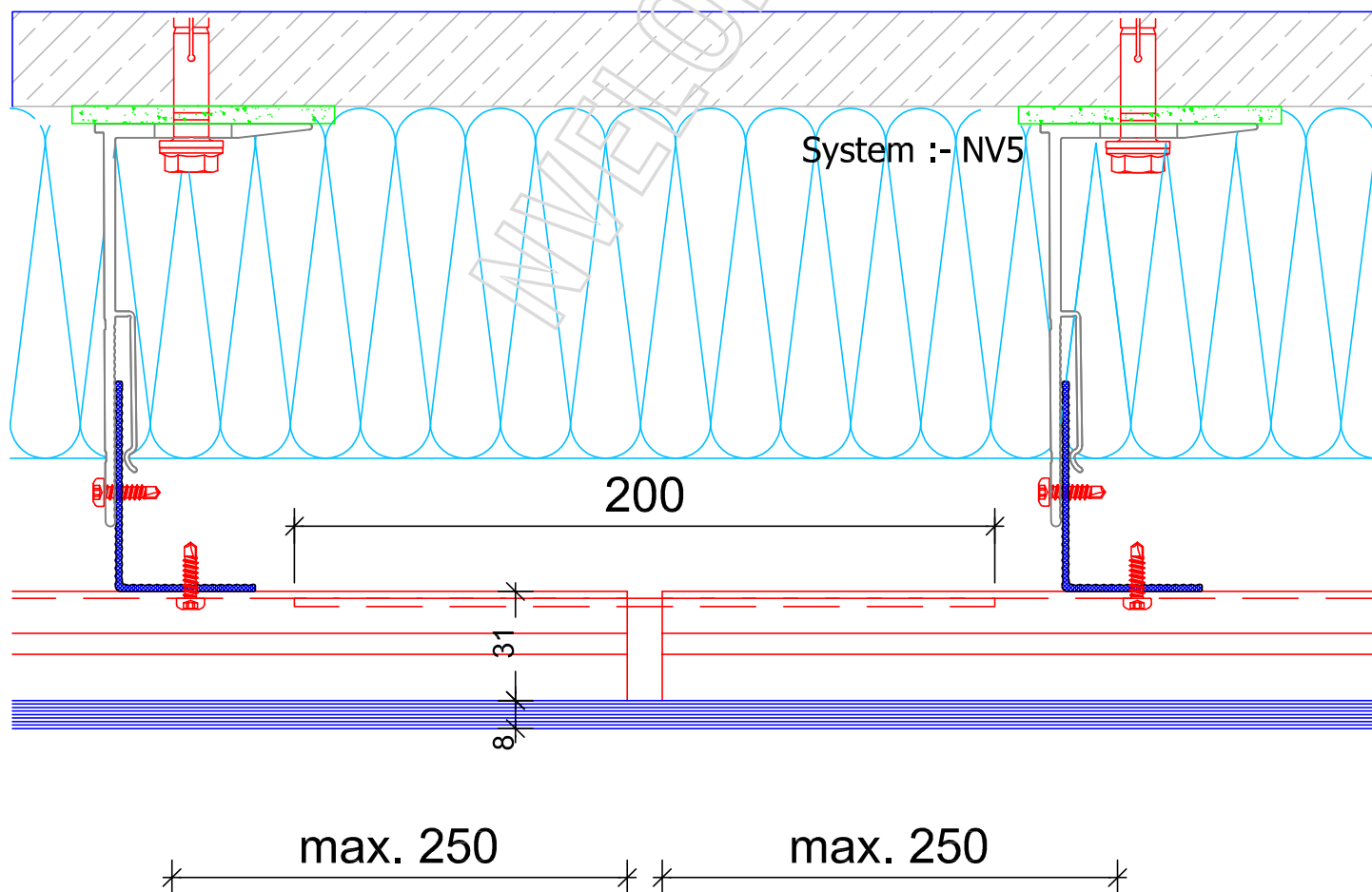


Variants Vertical joint

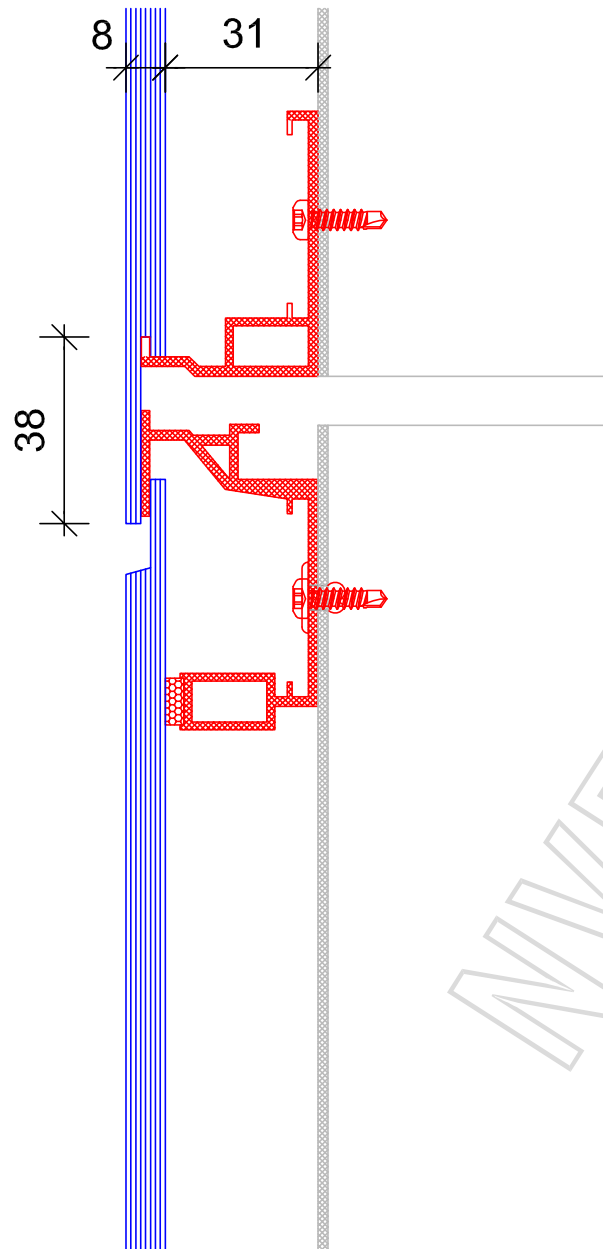


- a. 10 mm
- b. 15 mm
- c. 30 mm
- d. 2,2 mm Al / 3,2 mm Trespa
- e. 2,0 mm Al / 3,0 mm Trespa
- f. 8 mm or 10 mm

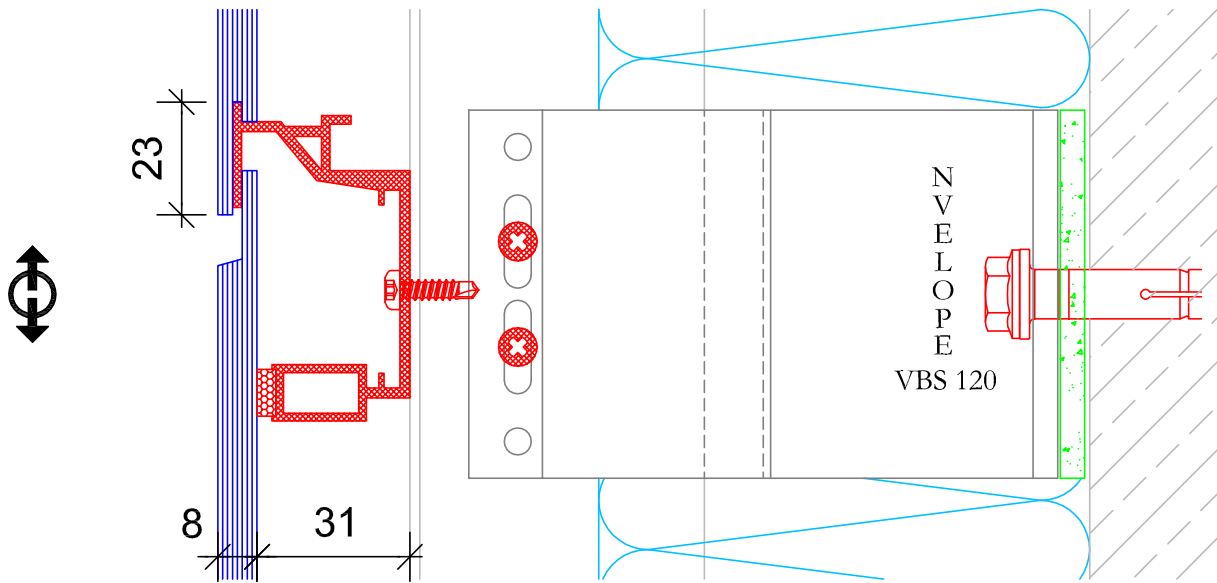
Horizontal section - NVELOPE 120



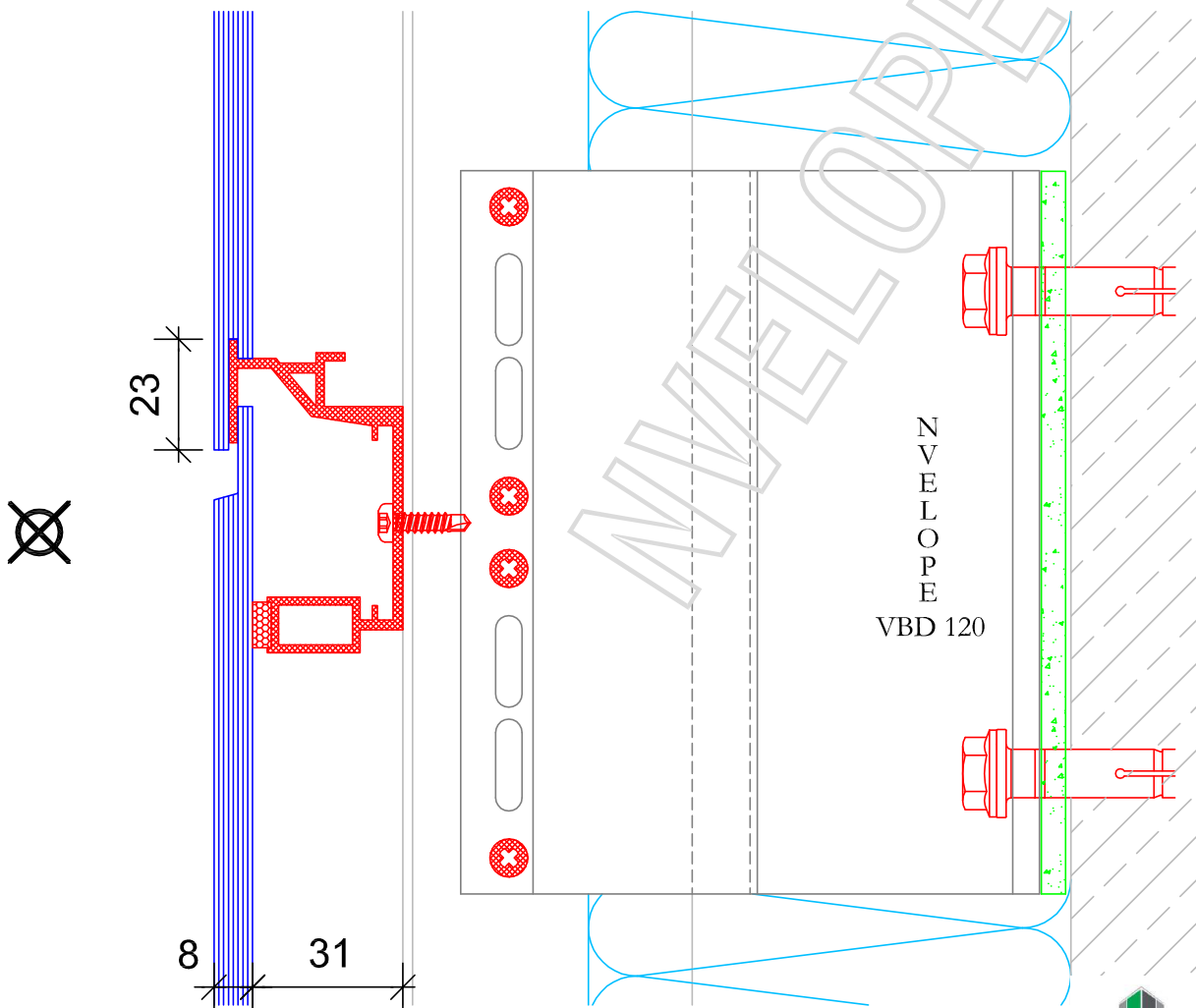
Horizontal section - NVELOPE 120 - joint of profile



Vertical section - at joint of profile/ board

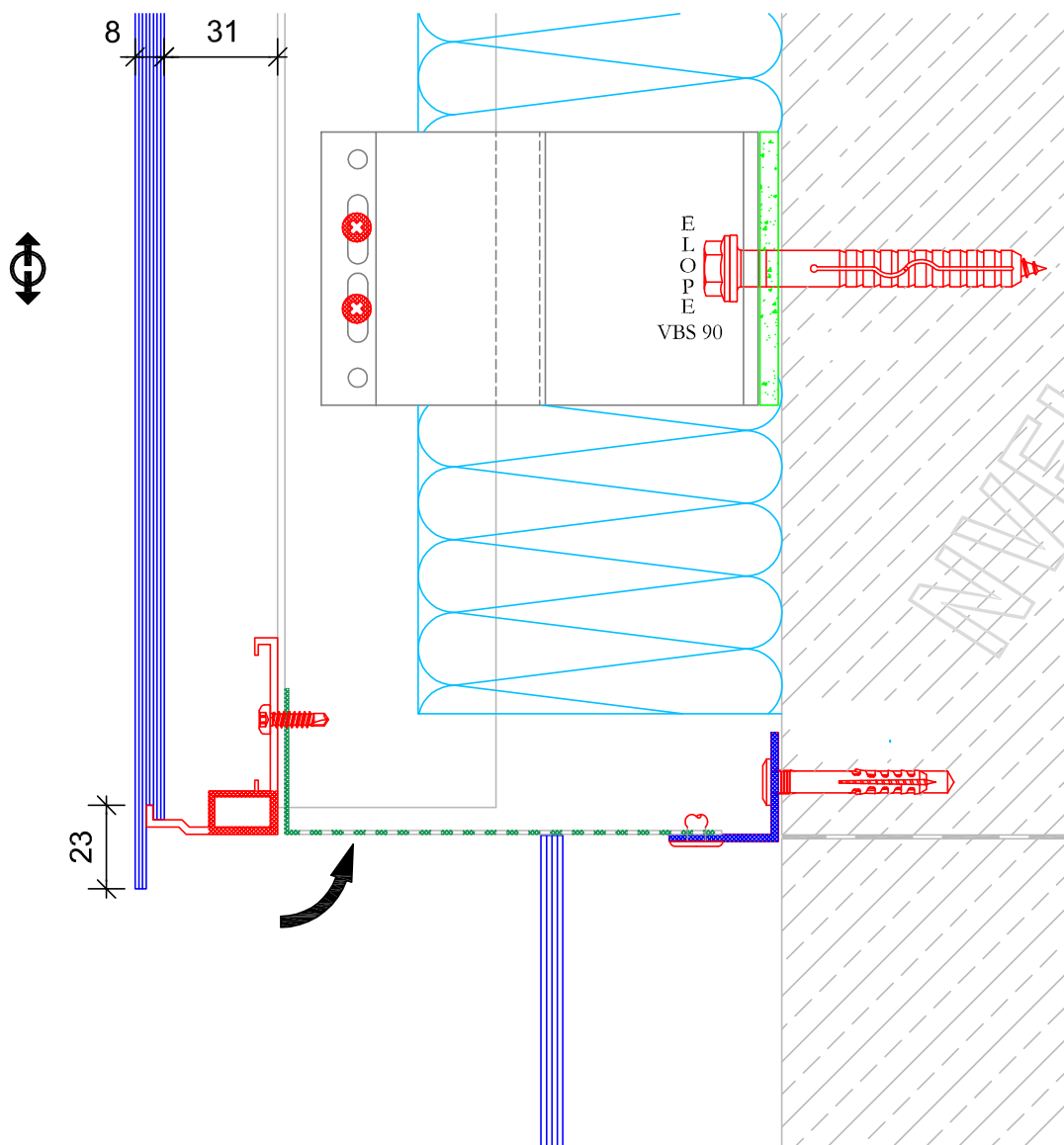


Vertical section-flexible point

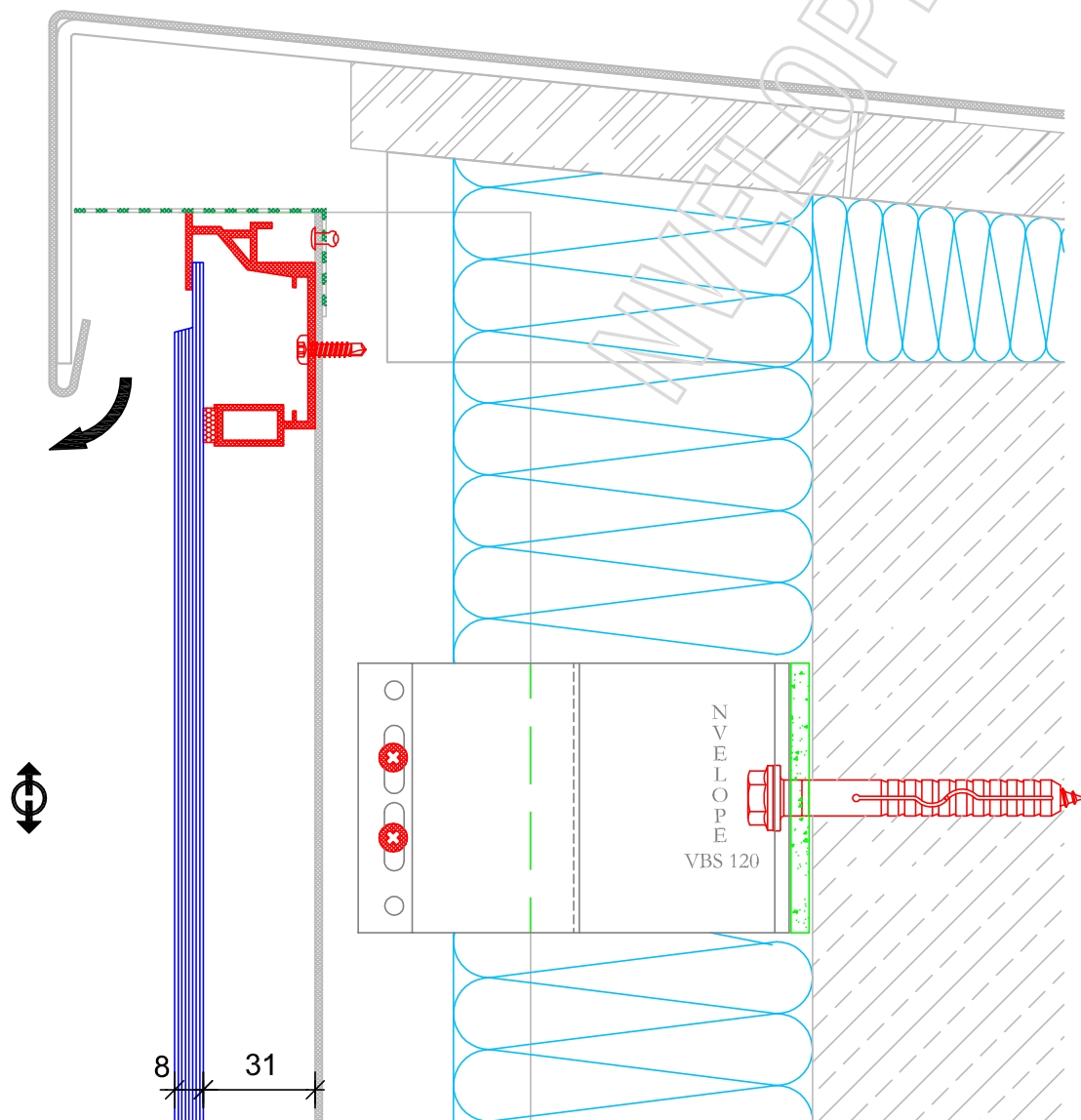


Vertical section-fixed point

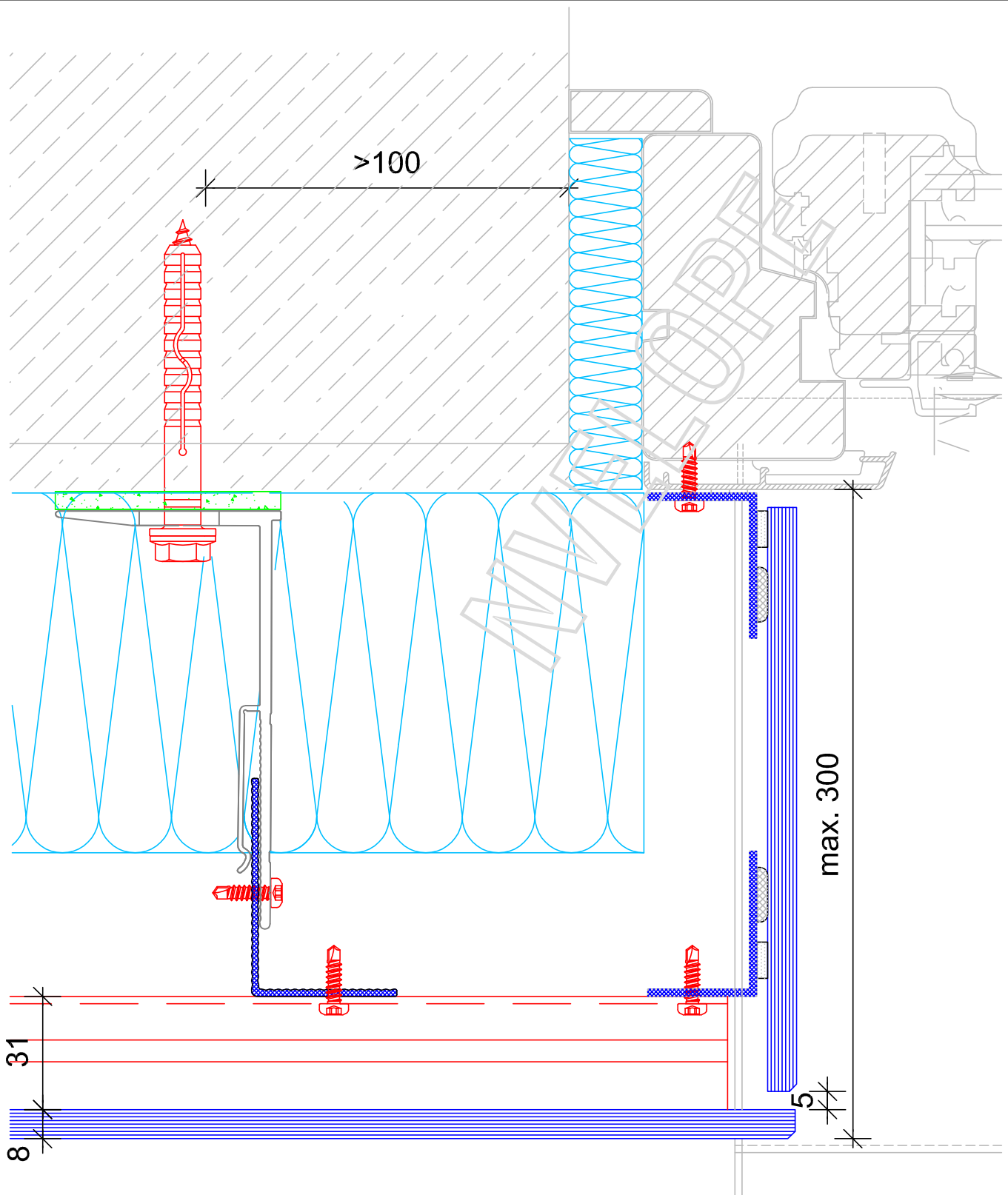




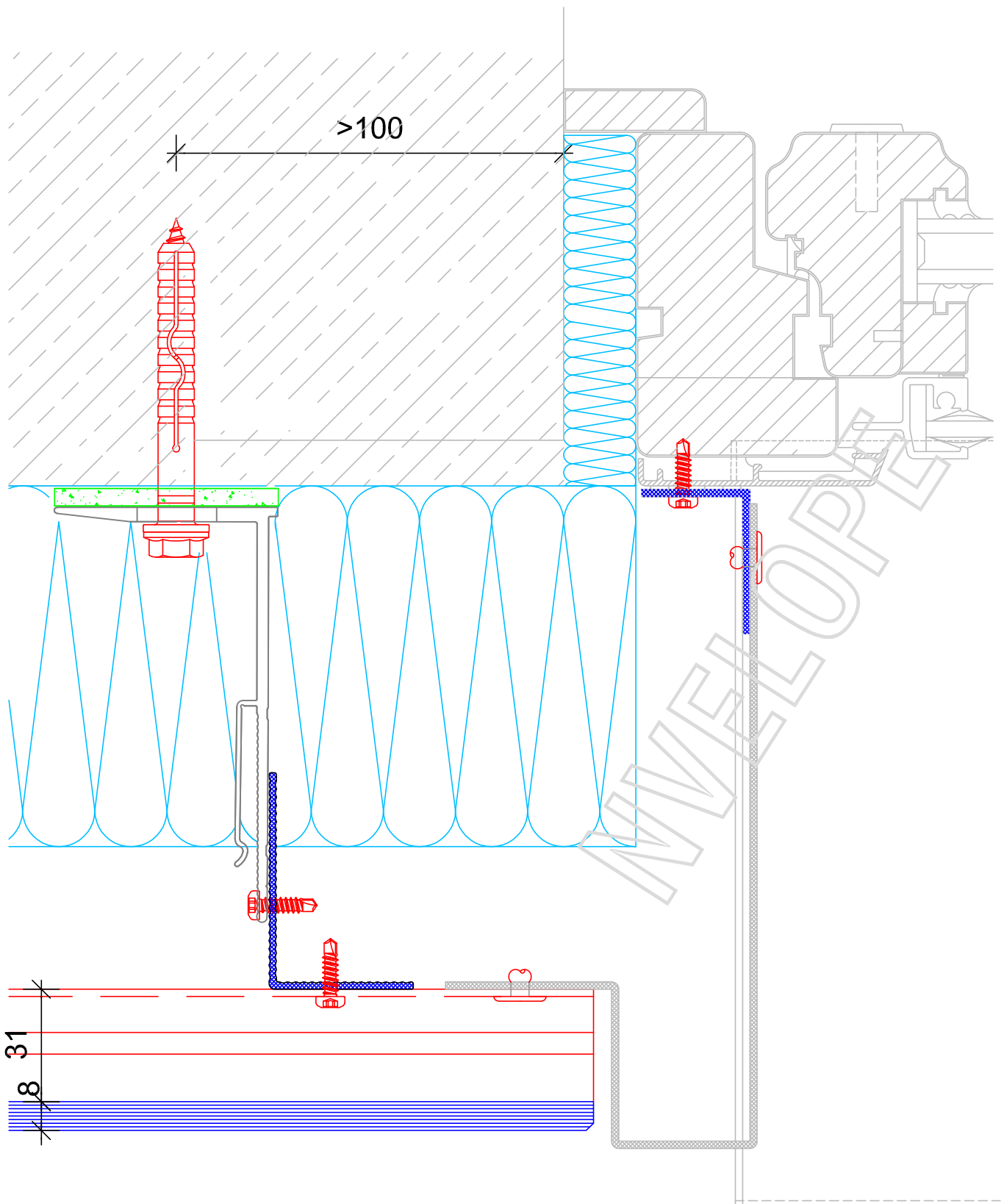
Vertical section - bottom detail



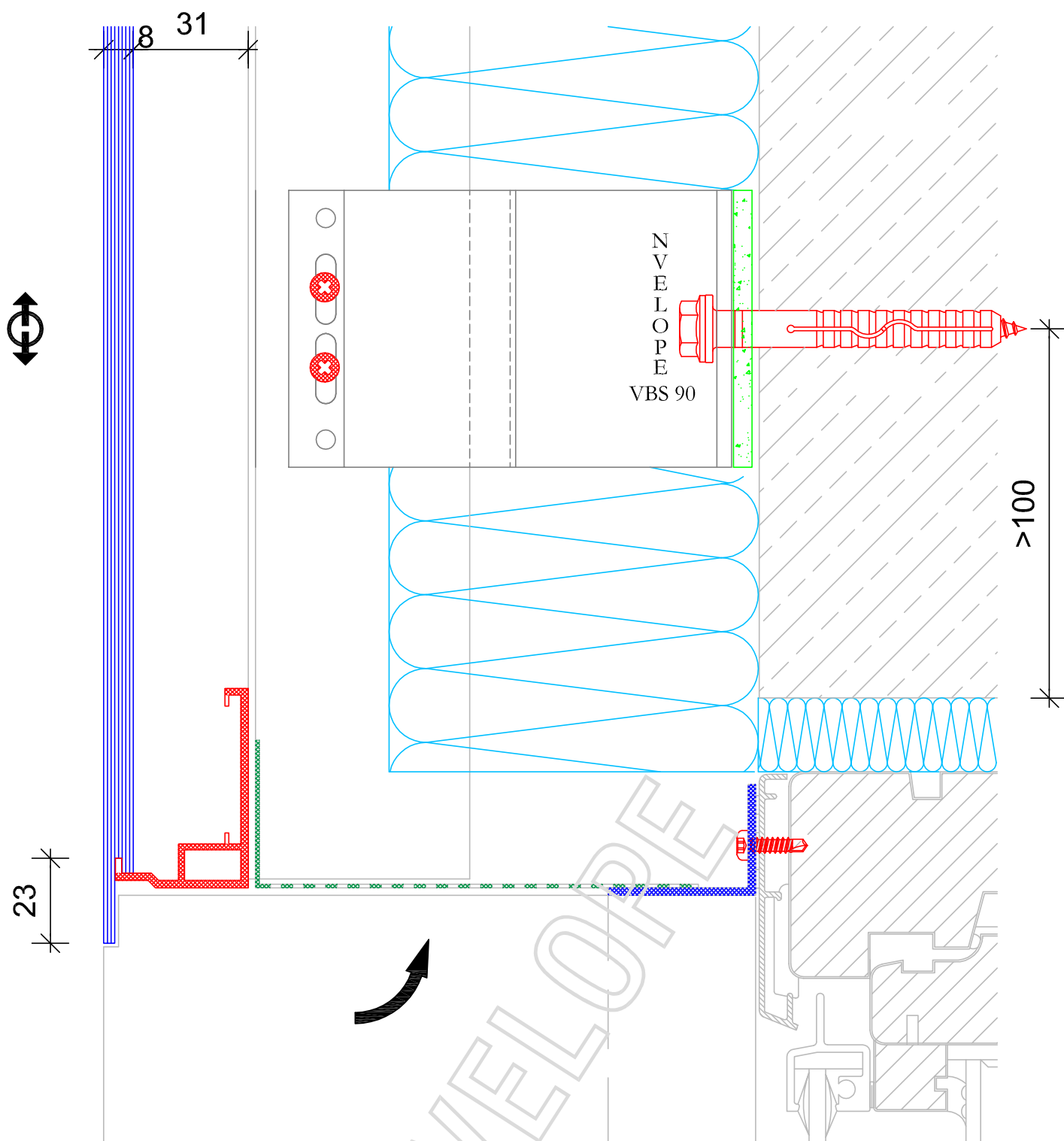




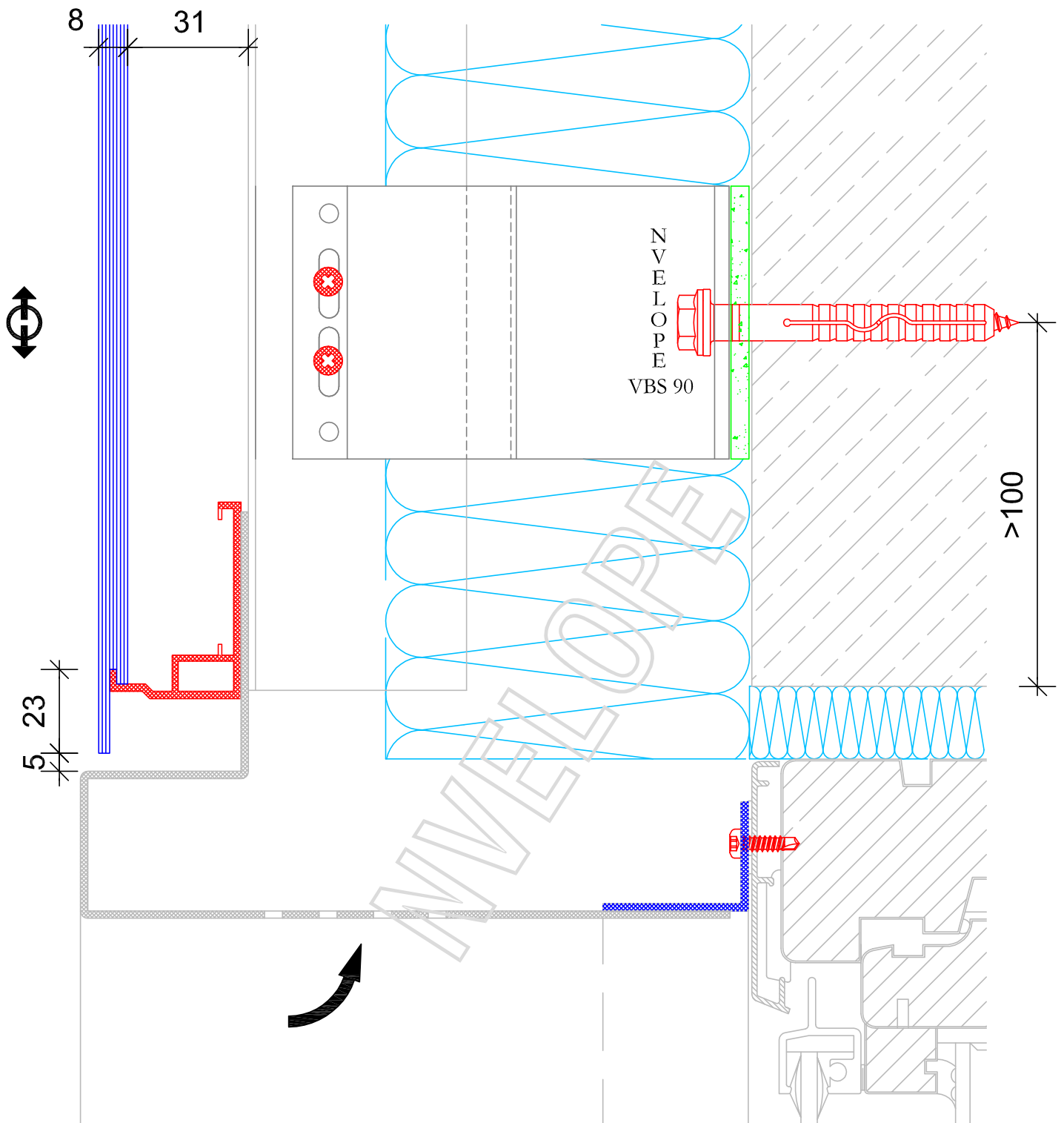
Horizontal section - window - reveal



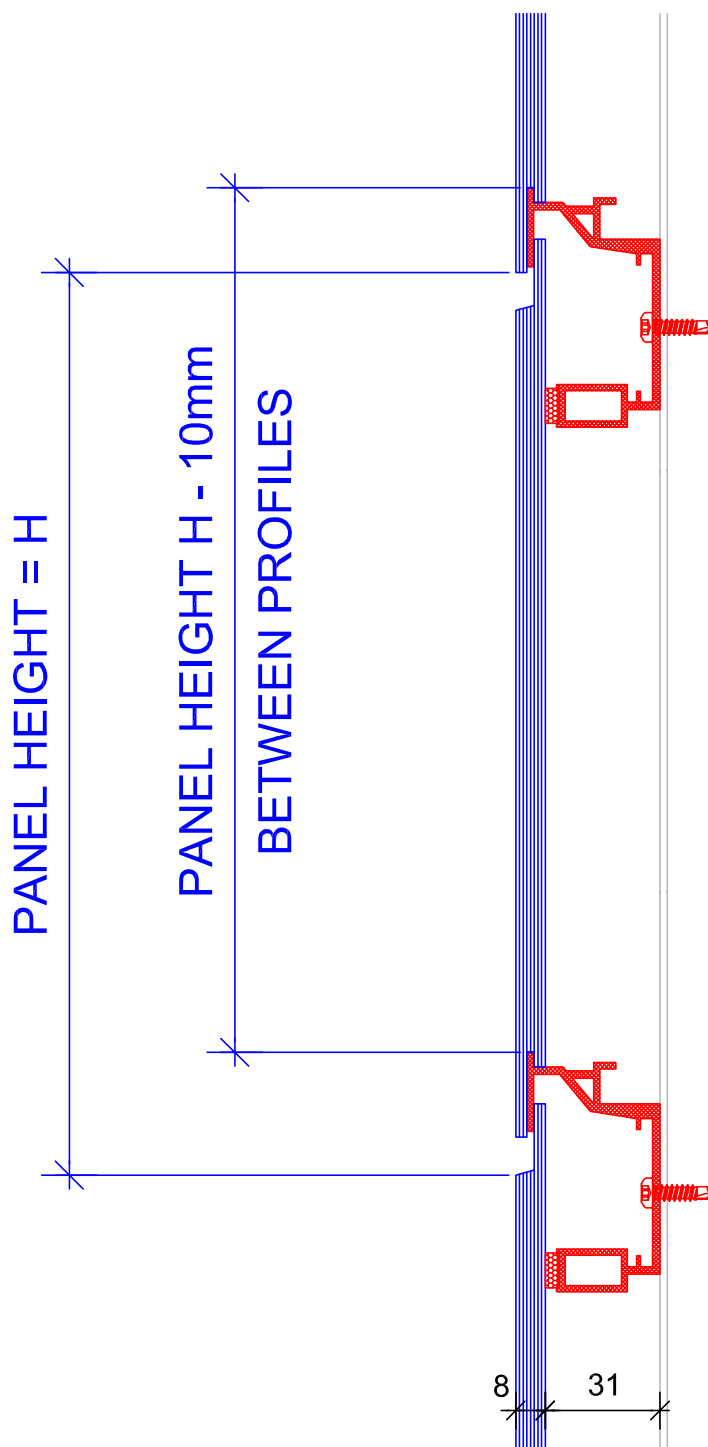
Horizontal section - window - reveal



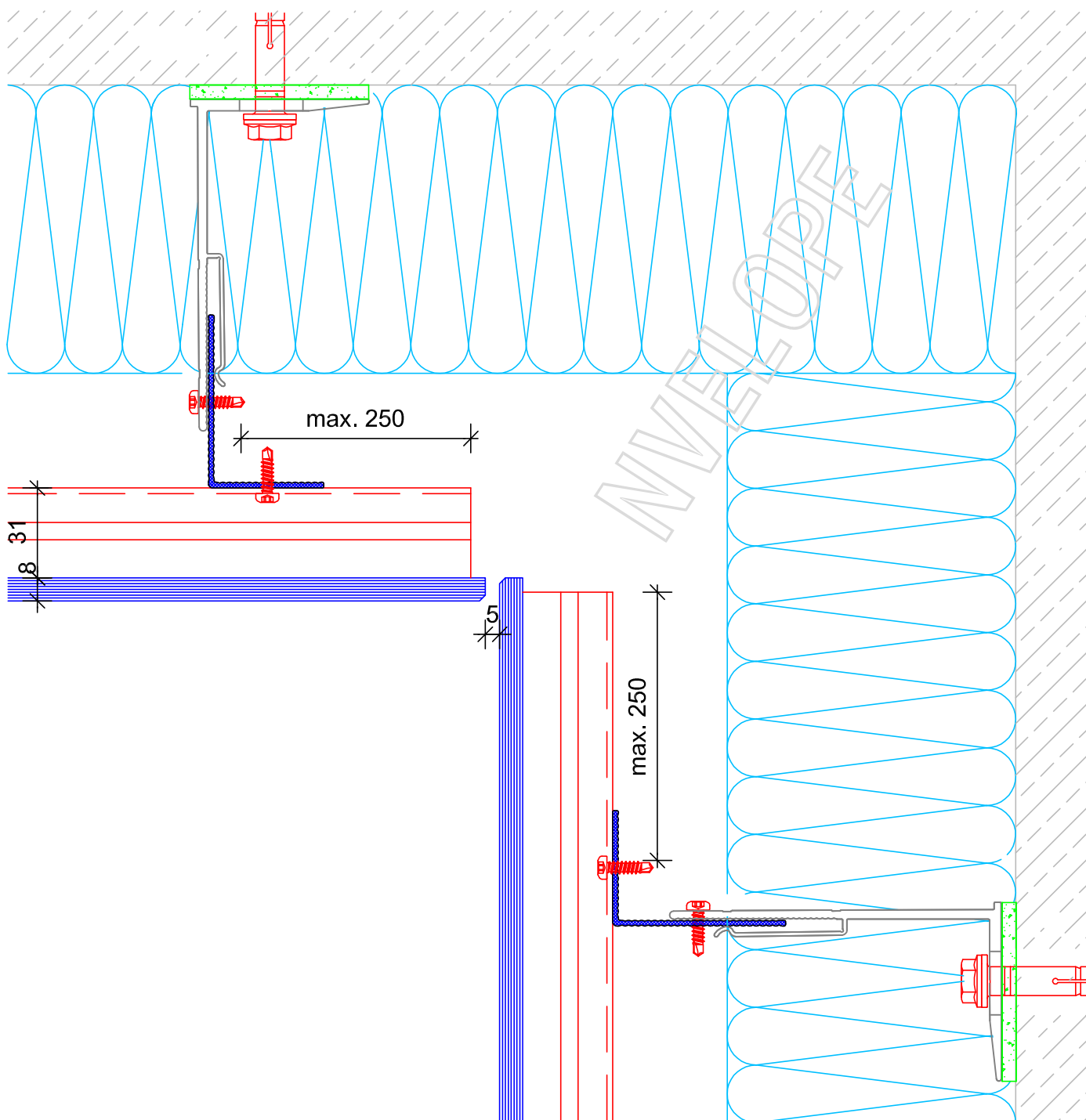
Vertical section - window head detail



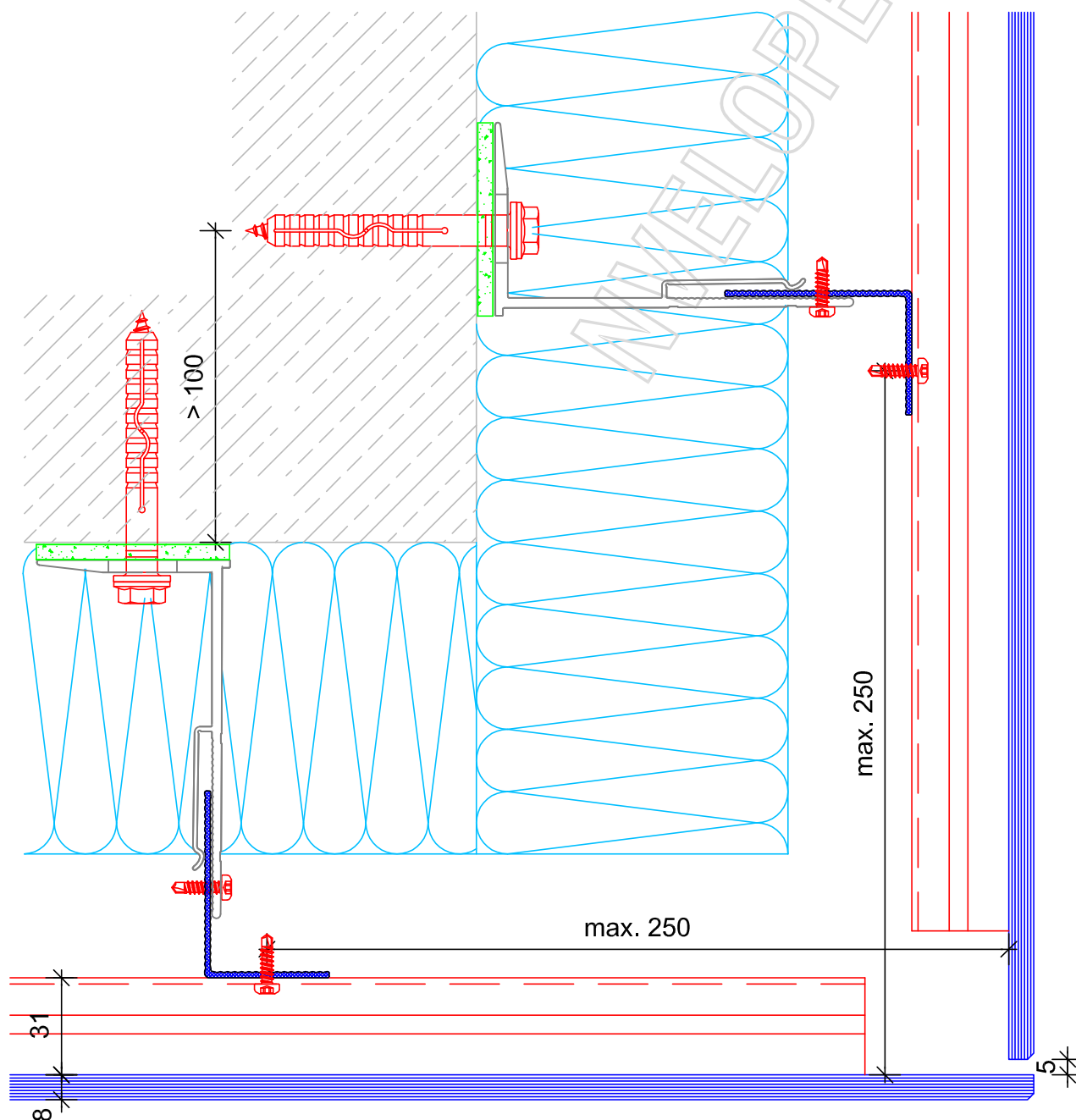
Vertical section - window head detail



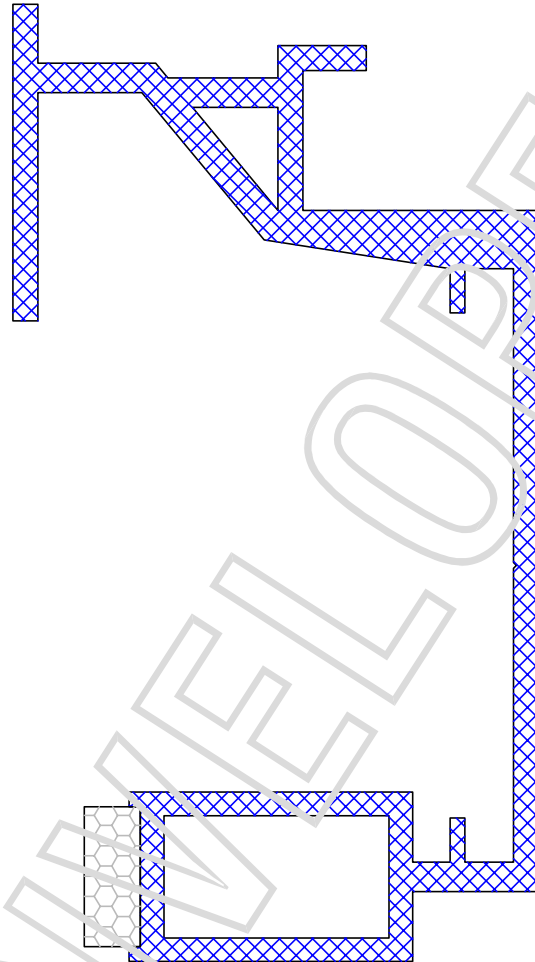
NVELOPE



Horizontal section - internal corner



Horizontal section - external corner



Remove backing
paper and Fit
Foam Tape in
Position shown.

TS 300 Main Support Rail
ref 05/TS300/MR



Tel: (01) 293 8951