

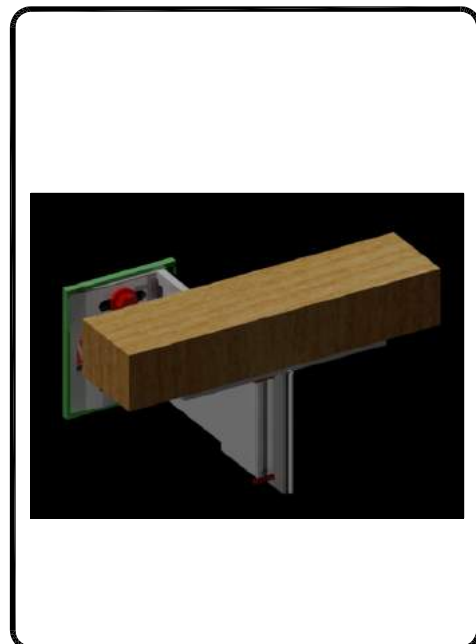
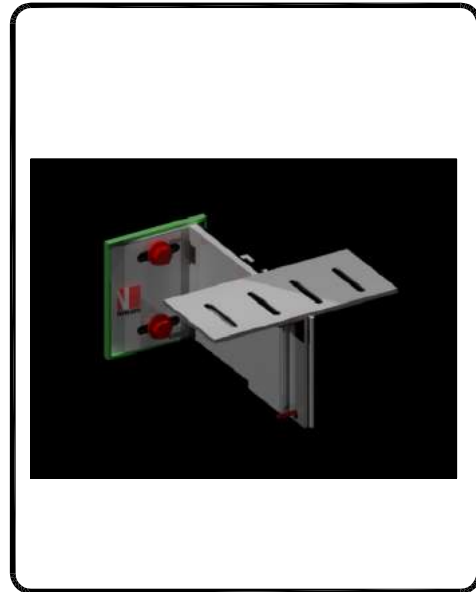
Ventilated
Aluminium support system for
TIMBER / BOARD CLADDING

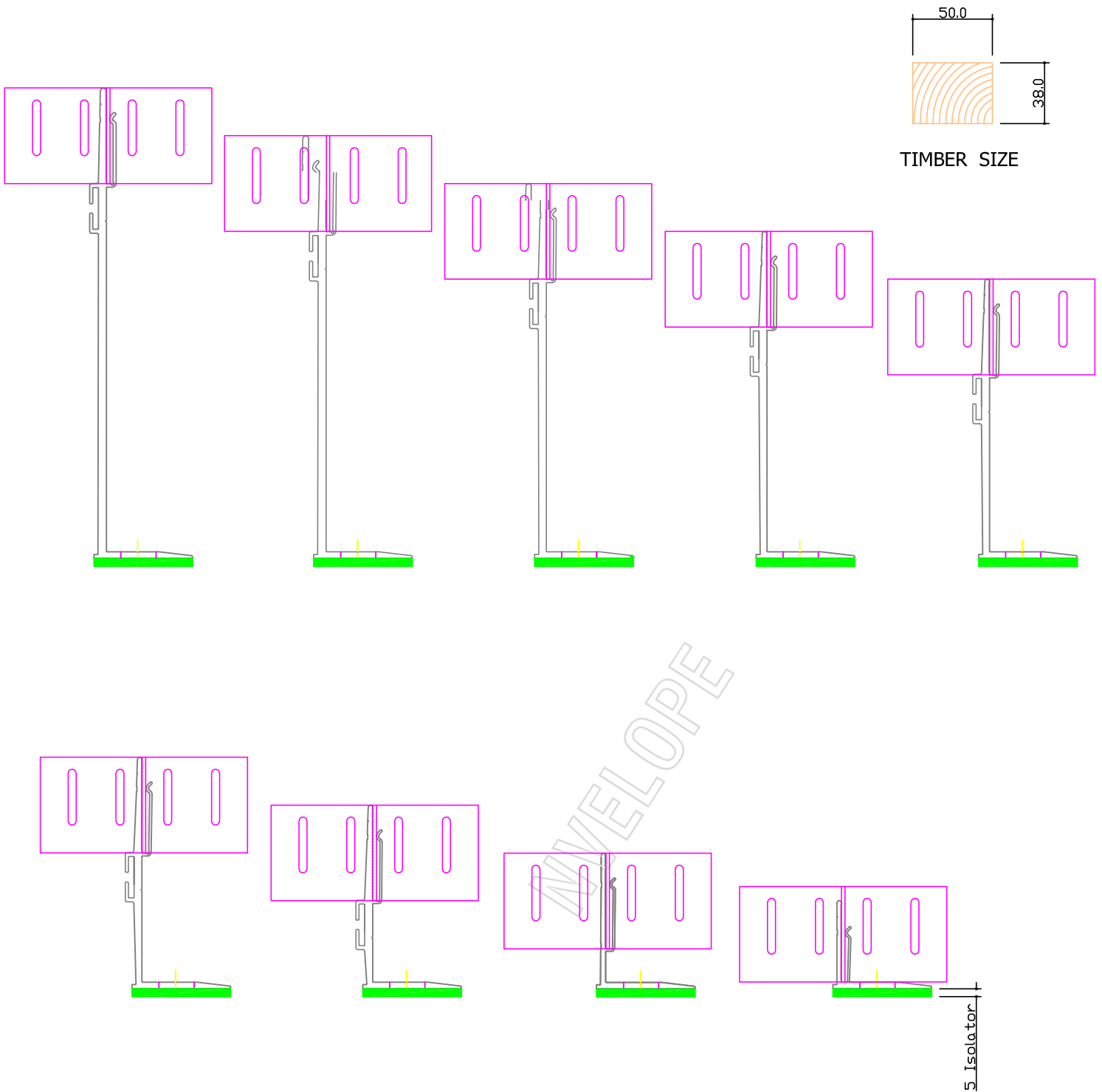
LEGEND:

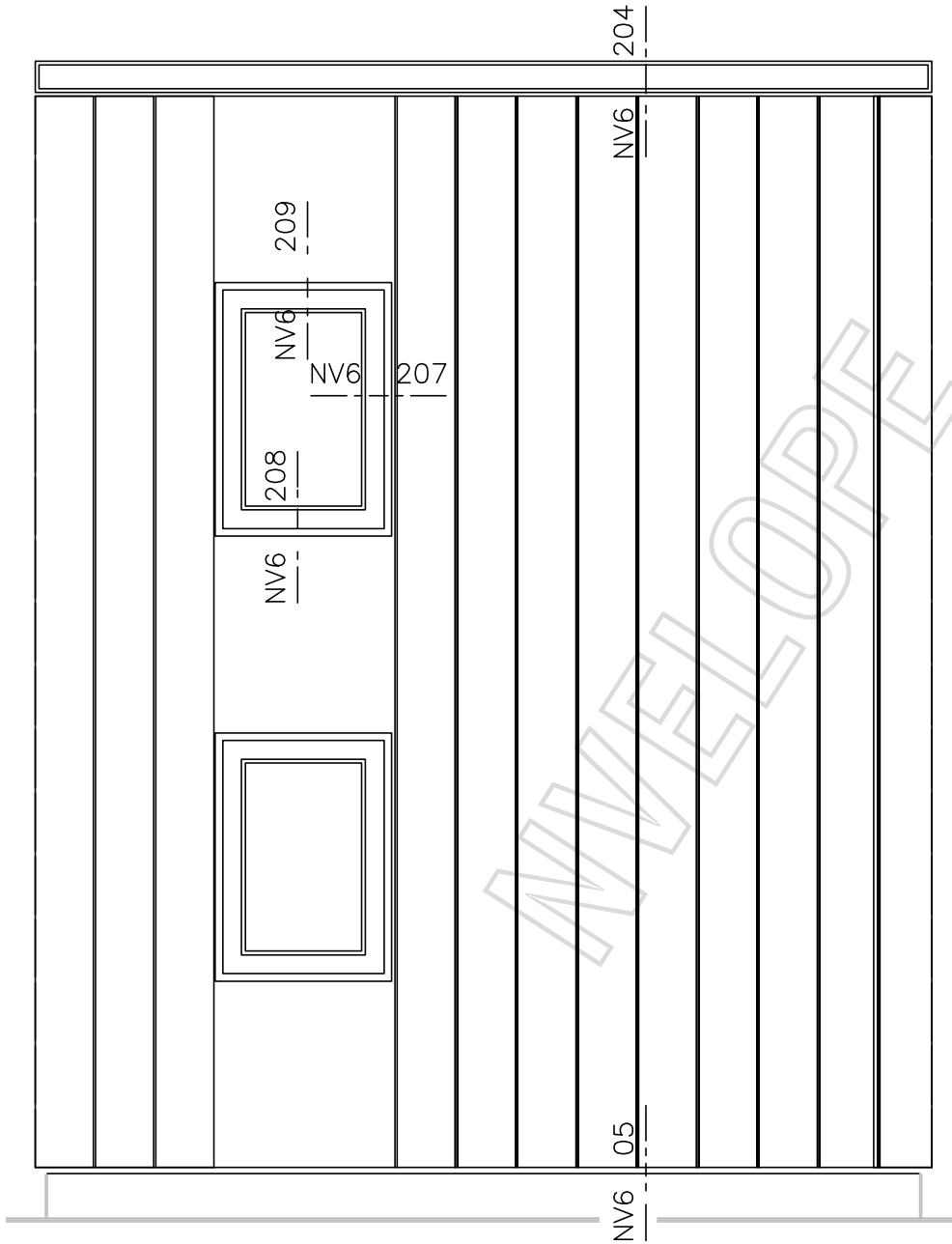
- A – cladding
- B – joint profile
- C – clamp
- D – corner-profile
- F – window profile
- 1 – Wall
- 2 – NVELOPE – support bracket
- 3 – Stainless steel fixing
- 4 – Self drilling stainless steel screw SR2 4.2 x 16
- 5 – Horizontal Timber Batten
- 6 – Thermal insulation
- 7 – Ventilation
- 8 – Horizontal Adapter
- 9 – NVELOPE Thermal isolator
- 10 – Timber fixing screw

CONTENTS:

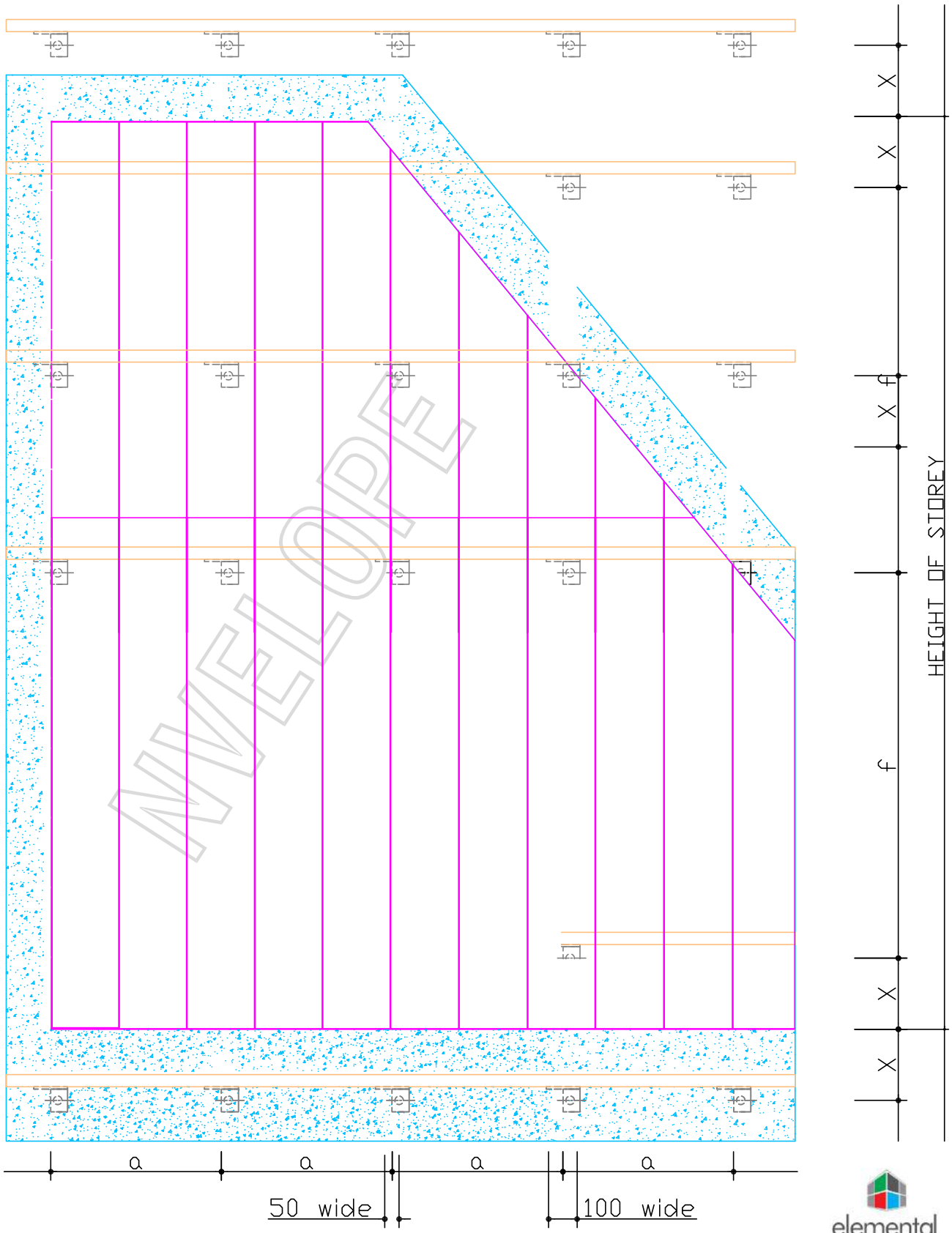
- NV6 – 01 Tolerances for adjustment
- NV6 – 02 View of cladding drawing locations – Timber cladding
- NV6 – 03 View of cladding – Timber cladding
- NV6 – 04 Horizontal section – NVELOPE 90 with T100 carrier
- NV6 – 05 Vertical section – Base of cladding
- NV6 – 06 Vertical section – Head of cladding
- NV6 – 07 Horizontal section – Window return detail
- NV6 – 08 Vertical section – Window sill detail.
- NV6 – 09 Vertical section – Window Head detail
- NV6 – 10 Horizontal section – External Corner
- NV6 – 10A Horizontal section – Internal Corner



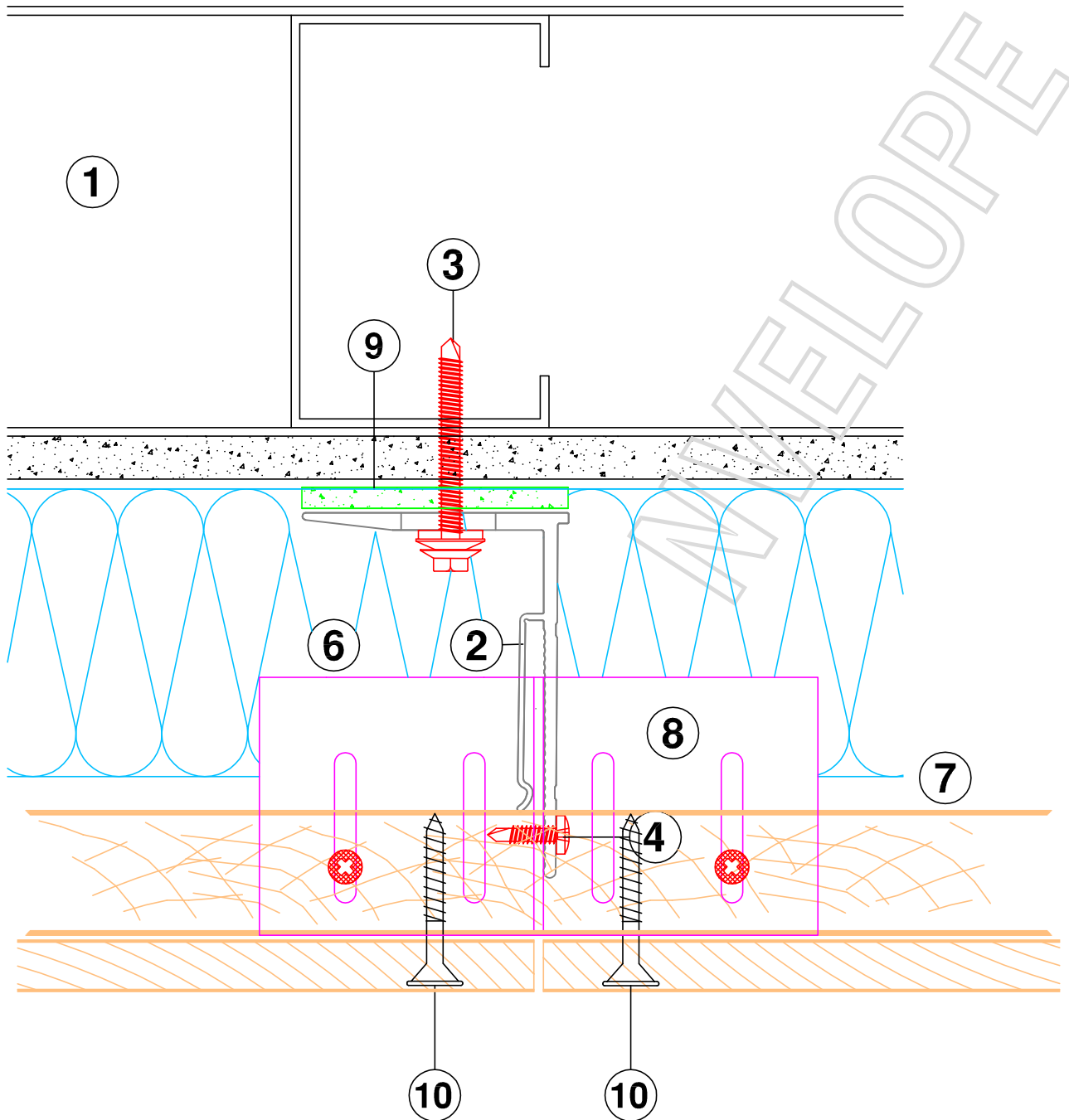




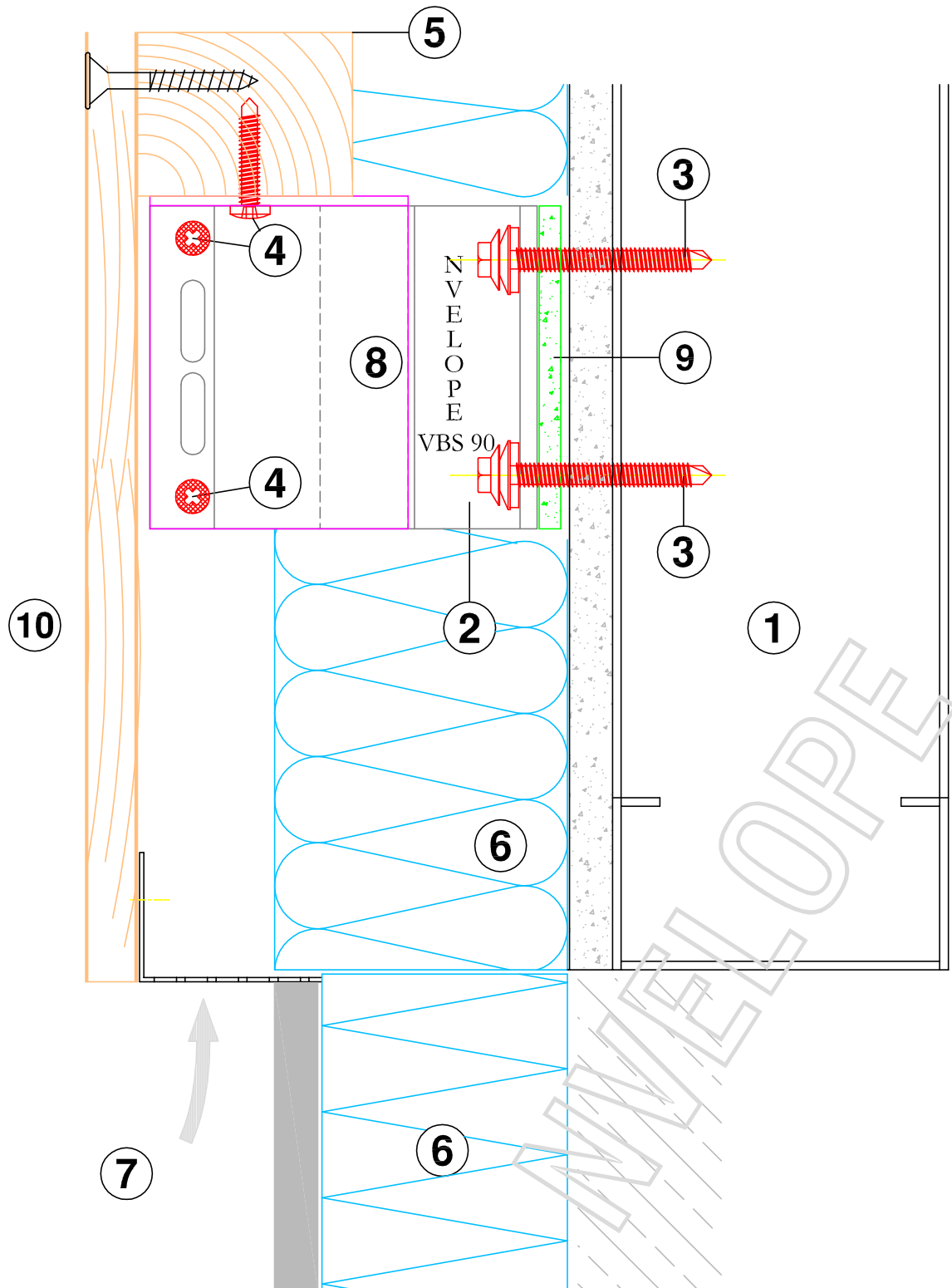
VIEW OF CLADDING



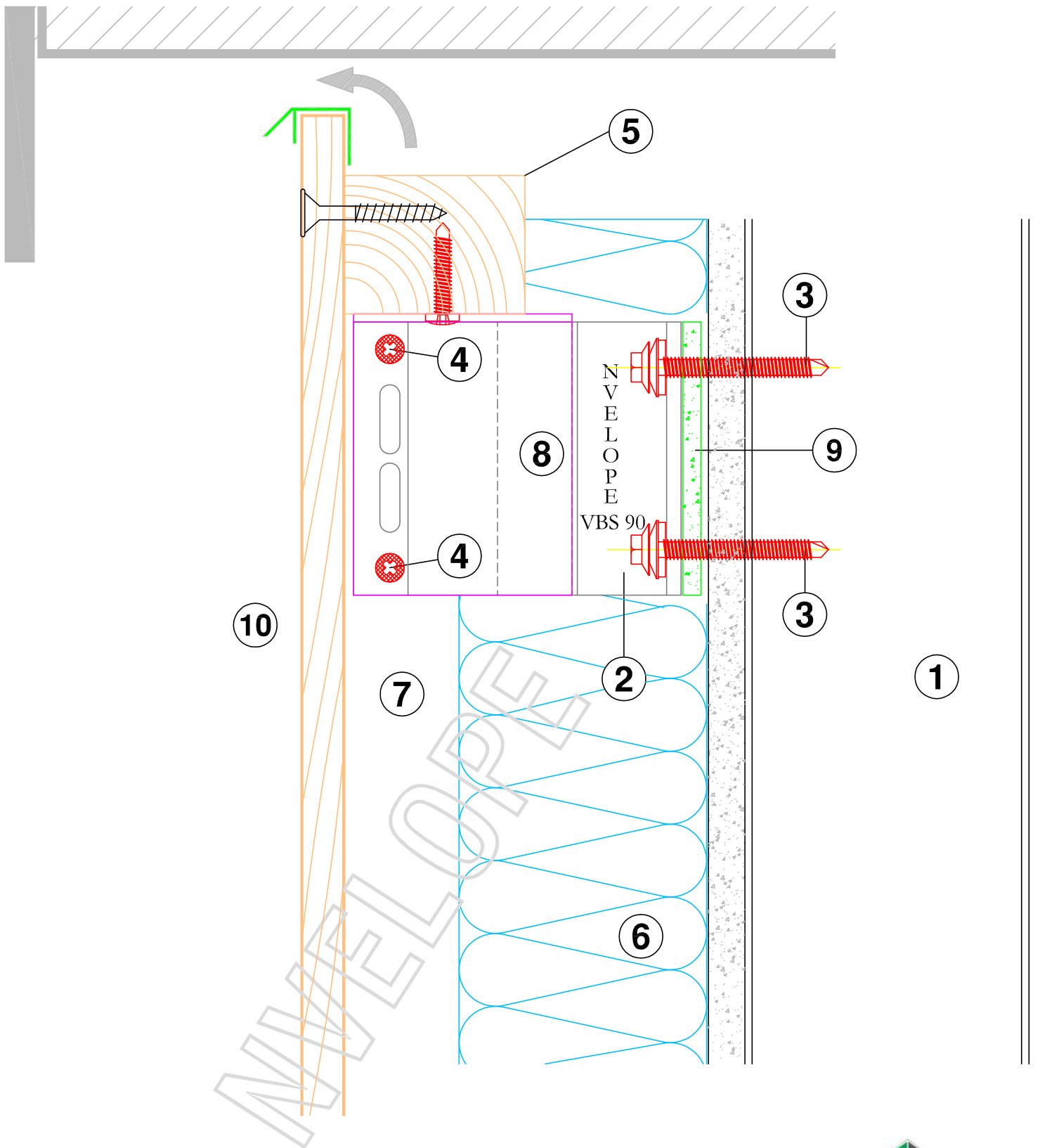
VIEW OF CLADDING



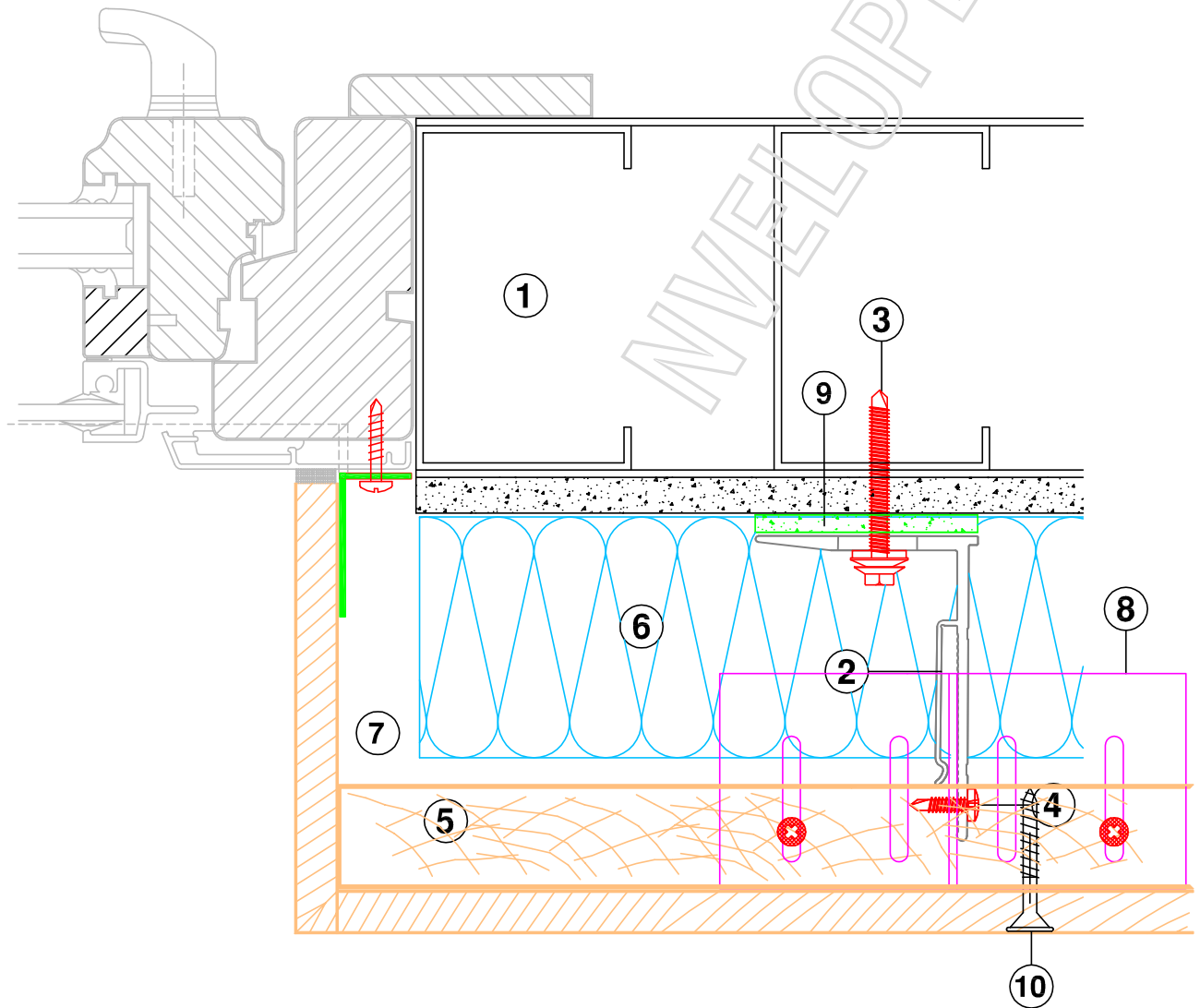
HORIZONTAL JOINT SECTION - NVELOPE 90 WITH T100 CARRIER



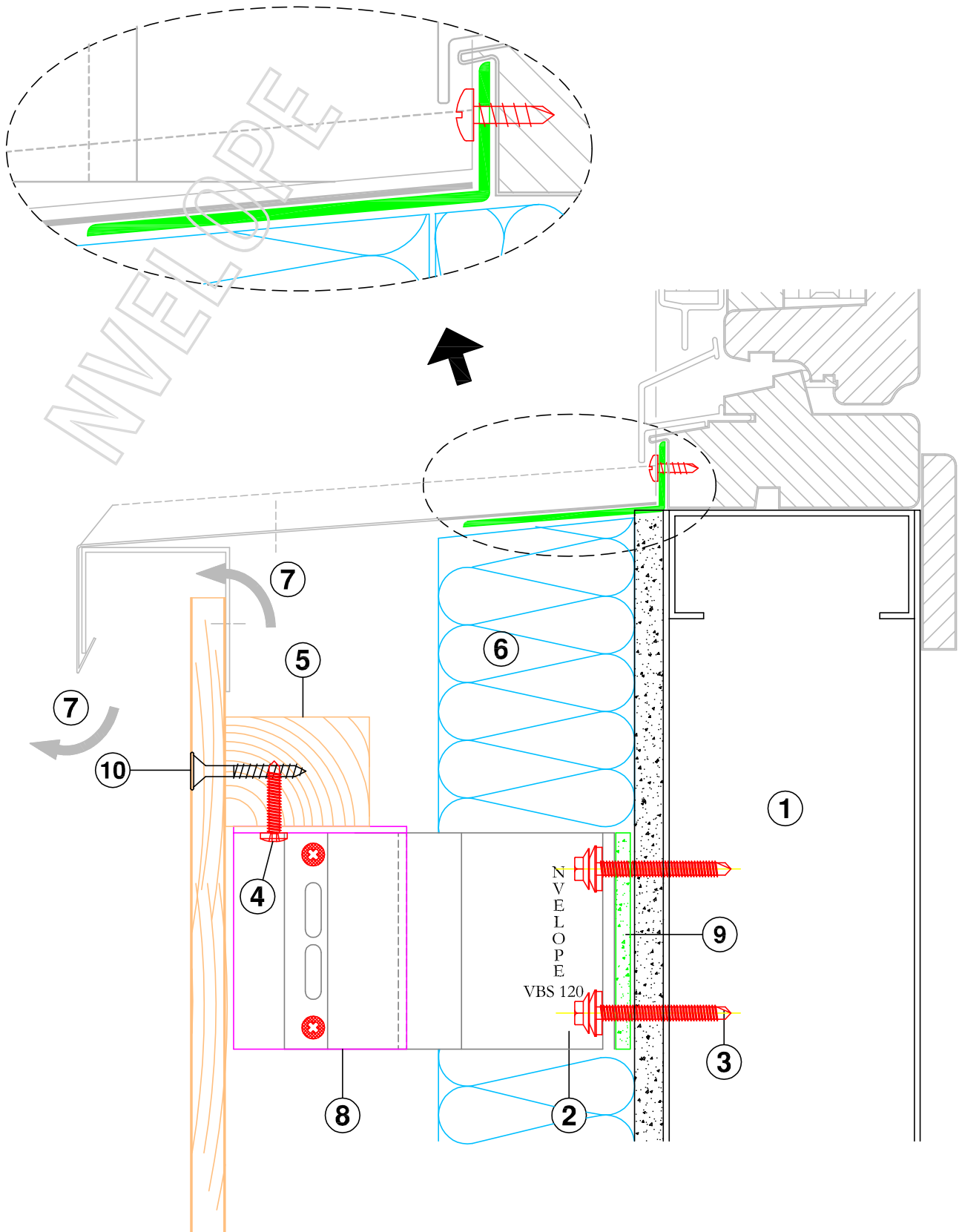
VERTICAL SECTION - BASE DETAIL



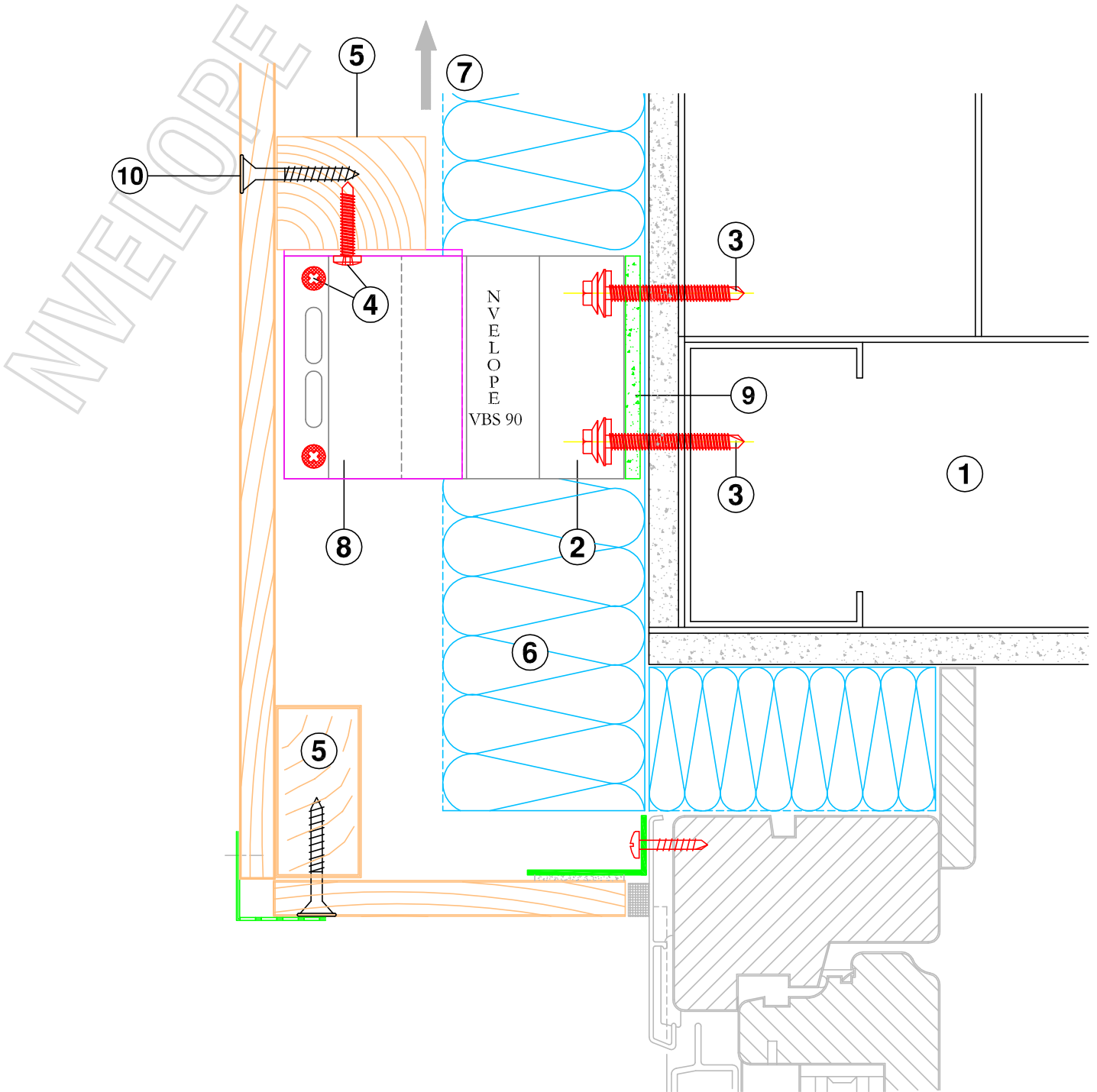
VERTICAL SECTION - HEAD DETAIL



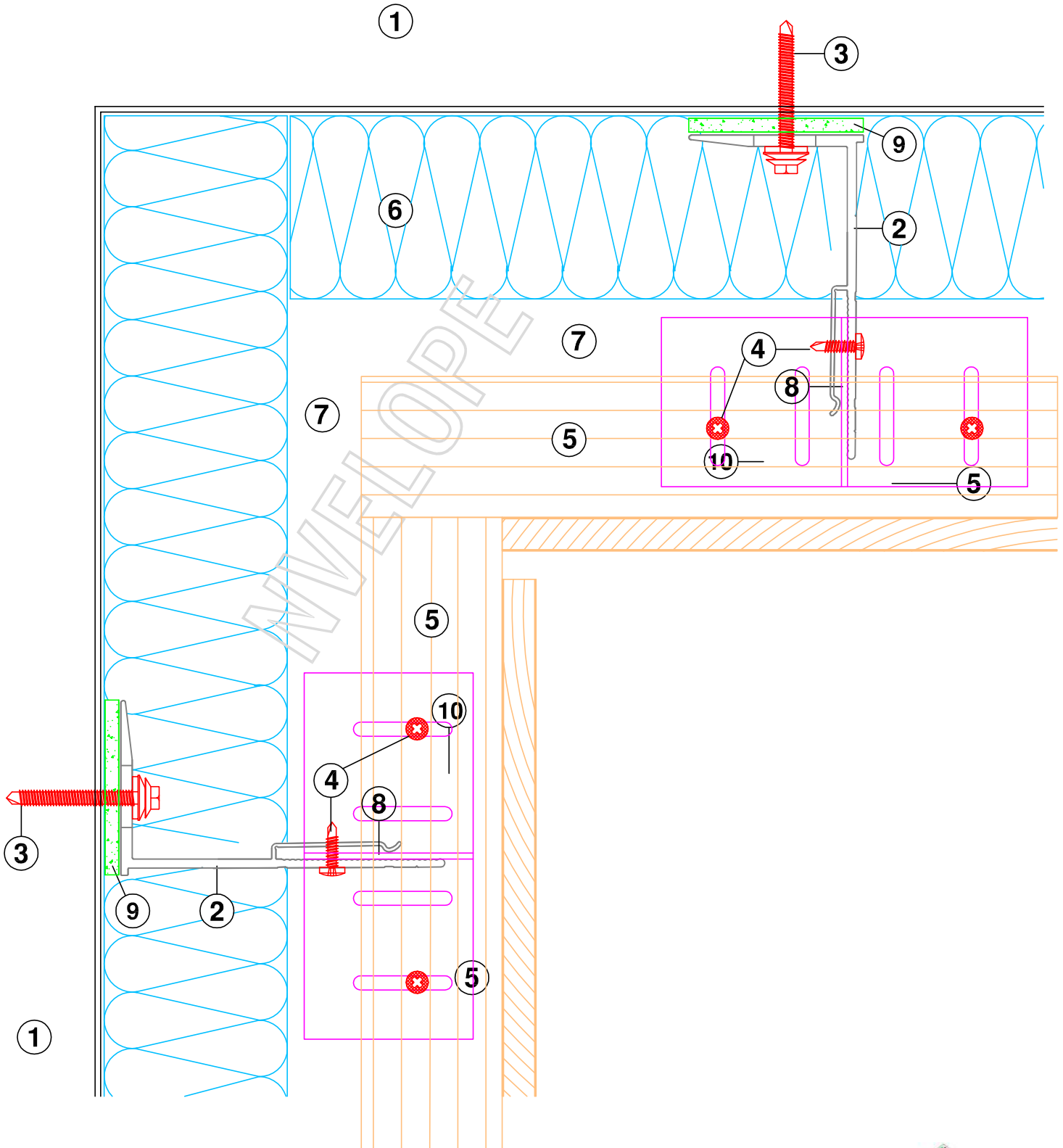
HORIZONTAL SECTION - WINDOW DETAIL



VERTICAL SECTION - WINDOW SILL DETAIL



VERTICAL SECTION - WINDOW HEAD DETAIL



HORIZONTAL SECTION - INTERNAL CORNER