

aluminium support system for
rainscreen cladding

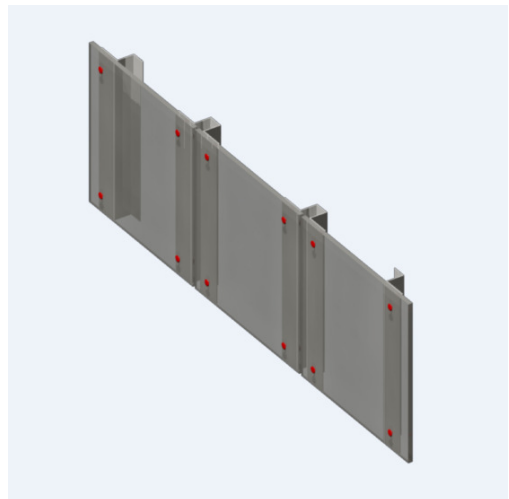
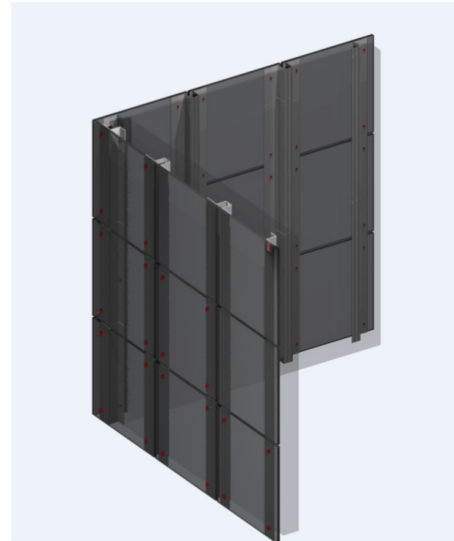
NVELOPE NV9 SYSTEM

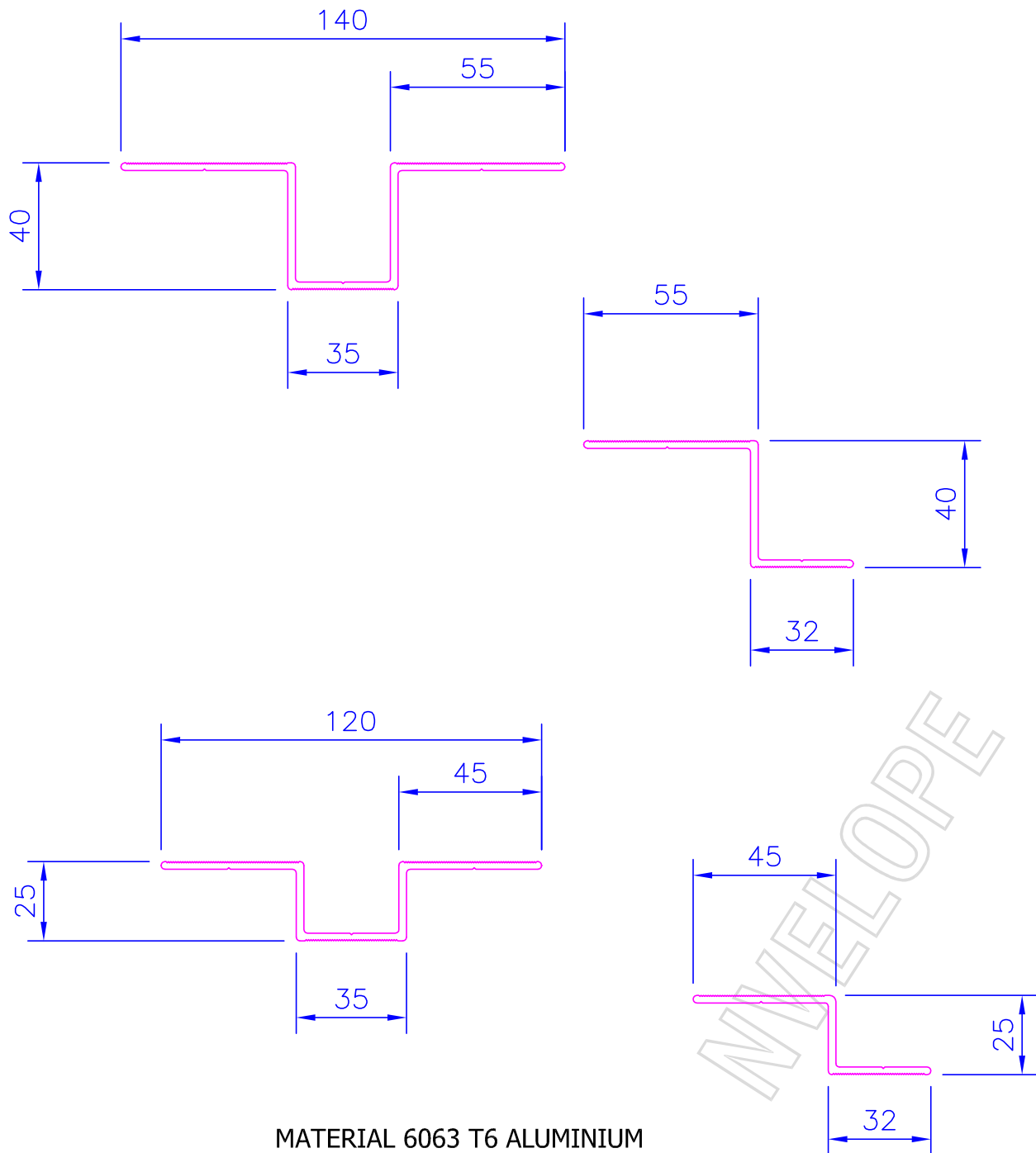
LEGEND:

- A – Cladding
- B – Cladding-rivet
- 1 – SFS steel wall + cement board
- 2 – Stainless steel fixing
- 3 – OMEGA AND Z profile vertical
- 4 – Ventilation Cavity

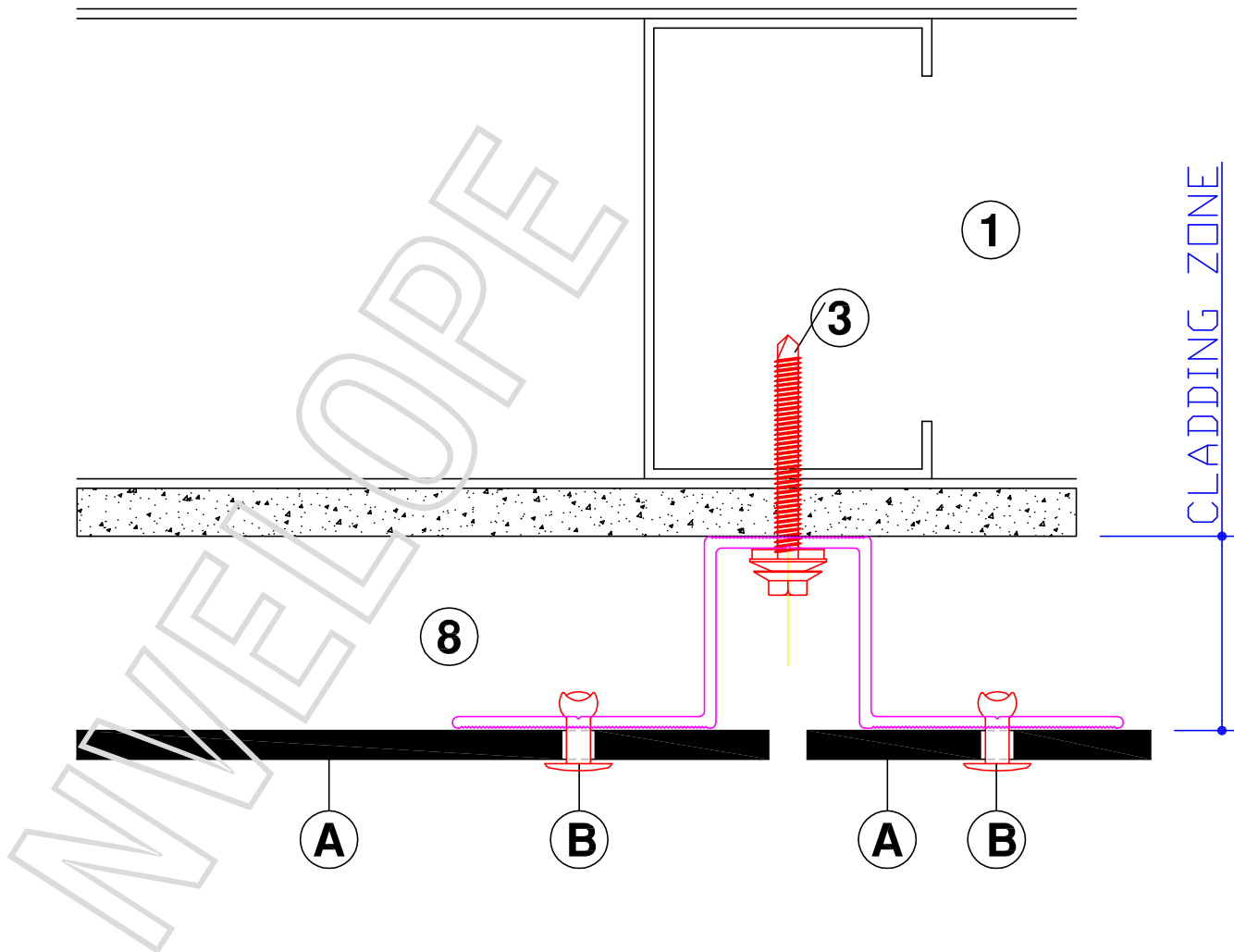
CONTENTS:

- NV9-00 NVELOPE System detail sheet
- NV9-01 Tolerances for 25mm and 40mm omega and "Z"
- NV9-02 Horizontal section
- NV9-03 Vertical section
- NV9-04 Horizontal section window jamb
- NV9-05 Vertical section window sil
- NV9-06 External corner
- NV9-07 Internal corner

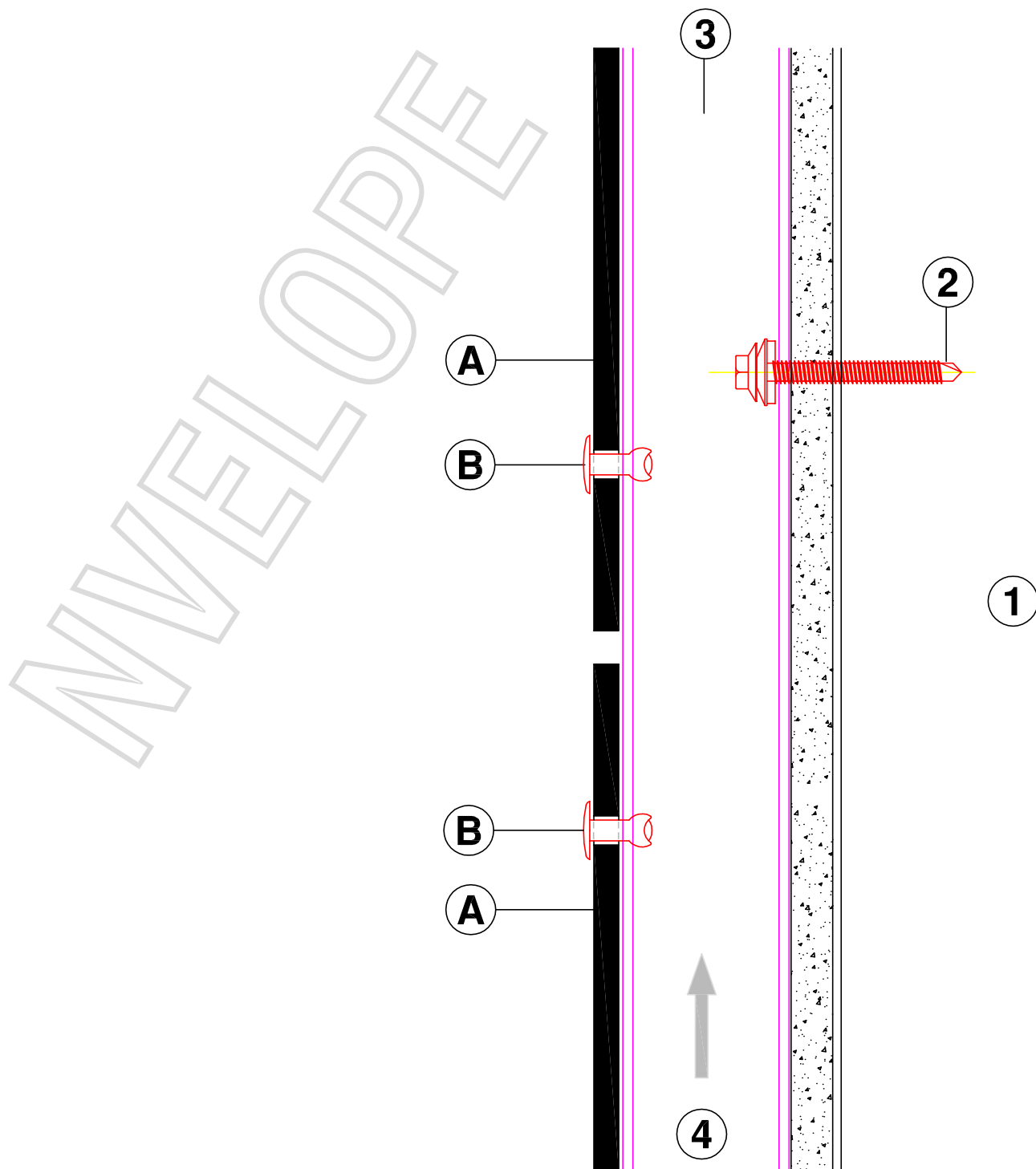




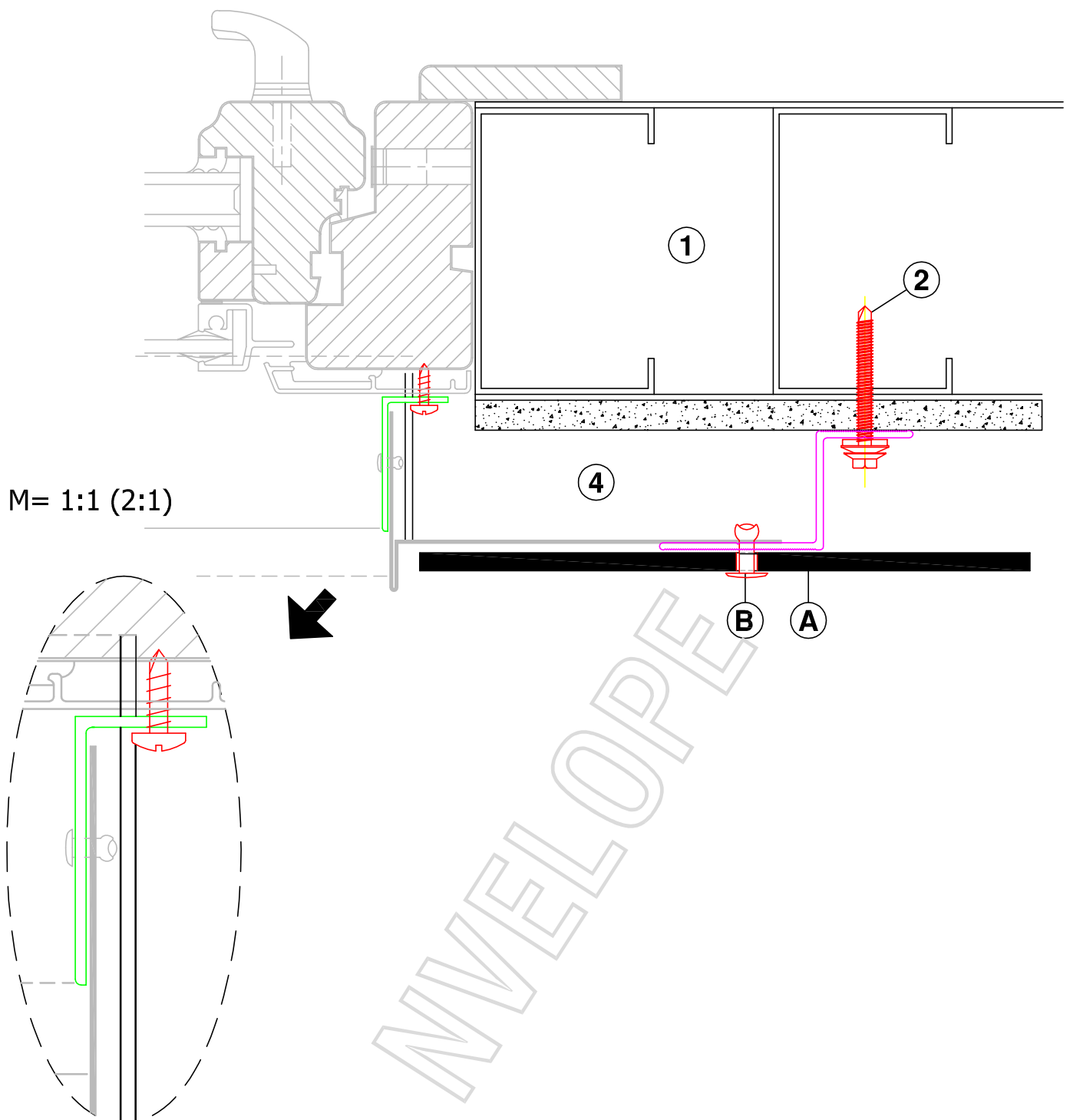
MATERIAL 6063 T6 ALUMINIUM
AVAILABLE IN 3000mm & 6000mm LENGTHS



HORIZONTAL SECTION

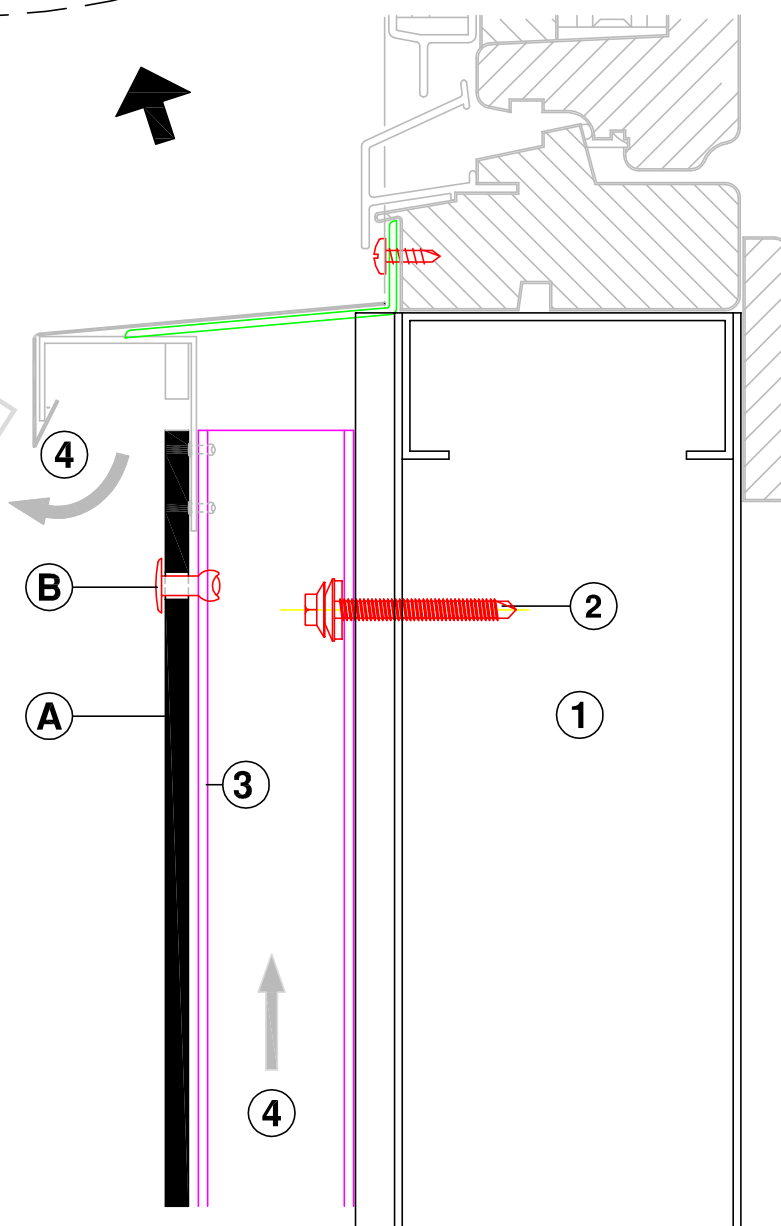
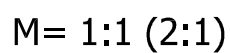


VERTICAL SECTION





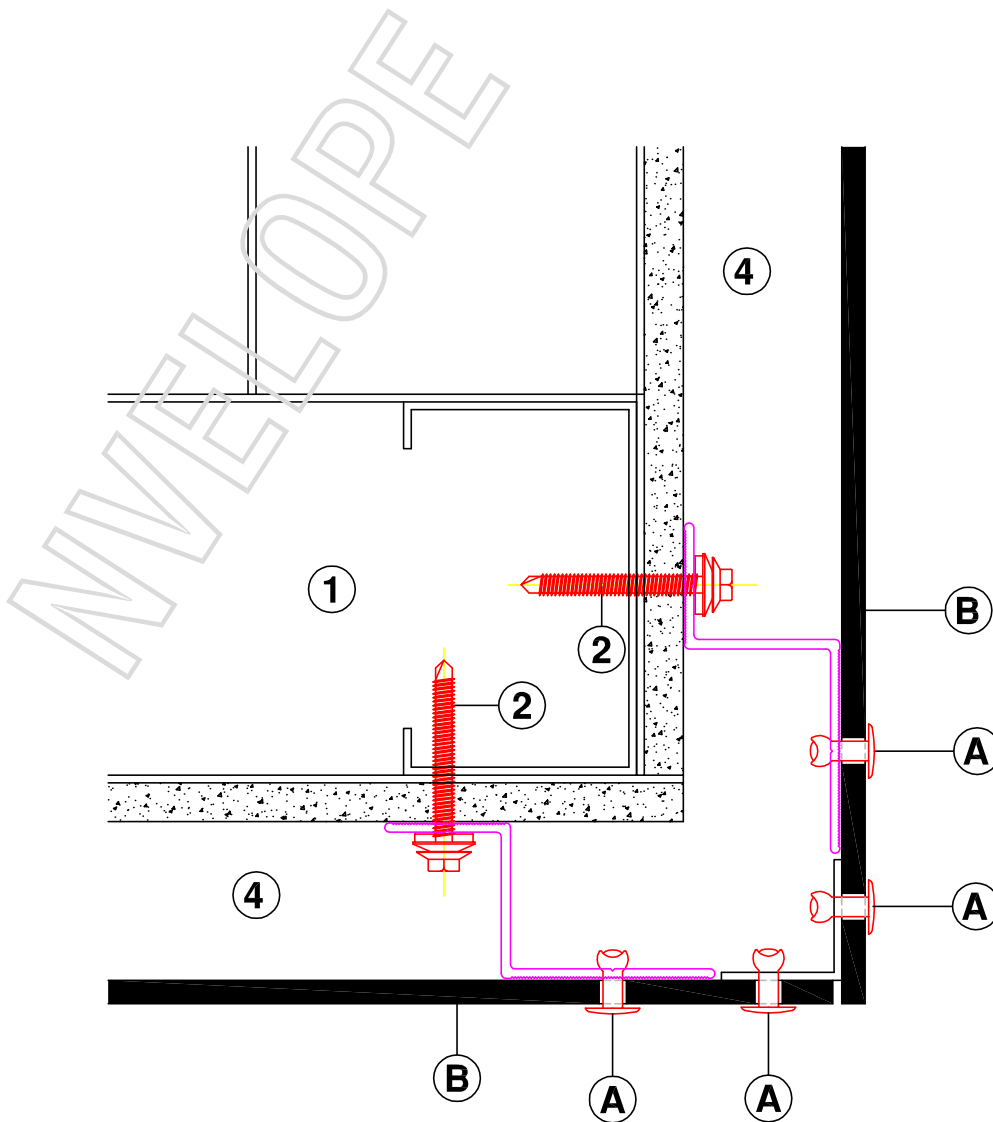
NVELOPE
MAKING CLADDING HAPPEN



NVELOPE RAINSCREEN SYSTEMS Ltd - tel - 01707 333396 - fax - 01707 333343

nvelope.com

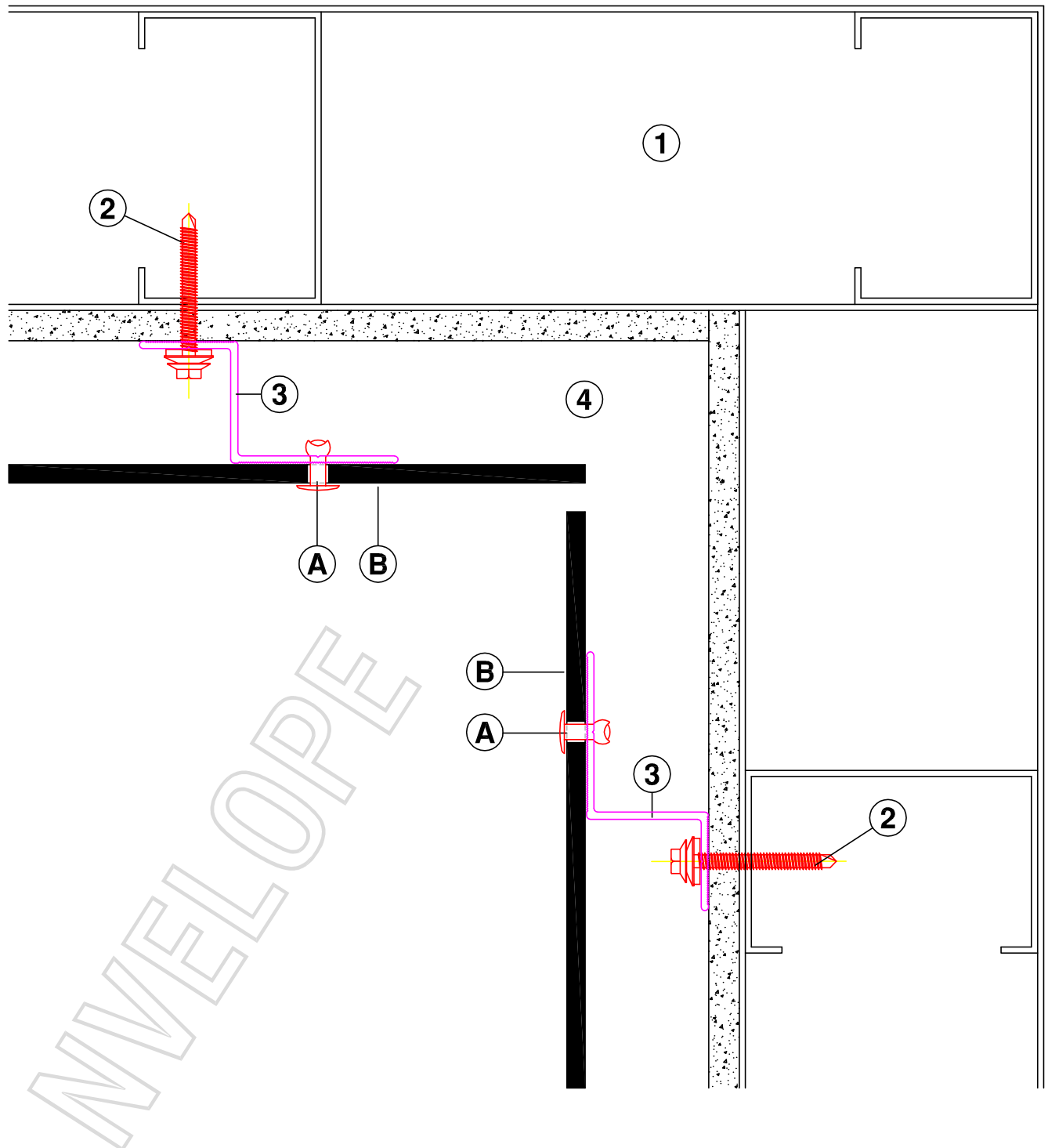
Detail Sheet :- NV9 - 05



HORIZONTAL SECTION - EXTERNAL CORNER

February 2015

System:- NV9



HORIZONTAL SECTION - INTERNAL CORNER

NVELOPE RAINSCREEN SYSTEMS Ltd - tel - 01707 333396 - fax - 01707 333343