

# NVELOPE Installation Guide NV6.



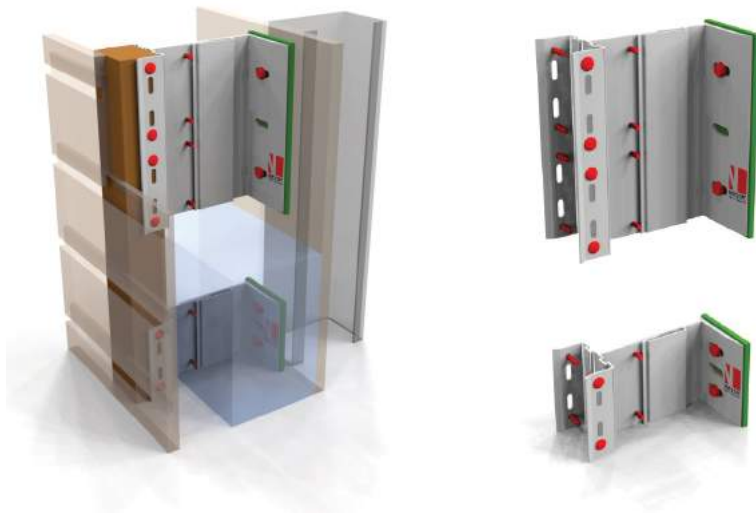
Framework for a timber cladding plywood and screw fixed cladding board, to any suitable building façade. This system is anchored to the building using a purpose-designed bracket that allows final alignment and adjustment.

*For further information, please see:*

*[www.nvelope.com](http://www.nvelope.com)*

*Also download / refer to:*

NV1



## NVELOPE Brackets

NVELOPE brackets are supplied in different sizes ranging from 60mm - 300mm (see table for cavity depths that can be formed) with the NV6 system.

The brackets are available with hole-sizes 11mm or 6.5mm depending on the diameter of the primary anchor (11mm - Block / Masonry - 6.5mm - Steel / Timber).

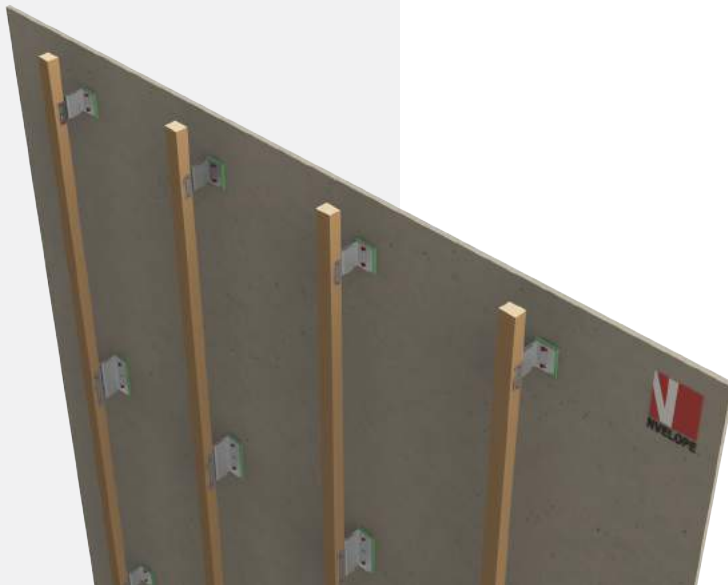
Min - Max Adjustment With Isolator		
Bracket Size (mm)	Min (mm)	Max (mm)
NVELOPE 60	112	142
NVELOPE 90	133	173
NVELOPE 120	163	203
NVELOPE 150	193	233
NVELOPE 180	223	263
NVELOPE 210	253	293
NVELOPE 240	283	323
NVELOPE 270	313	353
NVELOPE 300	343	383

Min - Max Adjustment Without Isolator		
Bracket Size (mm)	Min (mm)	Max (mm)
NVELOPE 60	107	137
NVELOPE 90	128	168
NVELOPE 120	158	198
NVELOPE 150	188	228
NVELOPE 180	218	258
NVELOPE 210	248	288
NVELOPE 240	278	318
NVELOPE 270	308	348
NVELOPE 300	338	378

# NVELOPE

## Brackets & Primary Fixings.

NV6

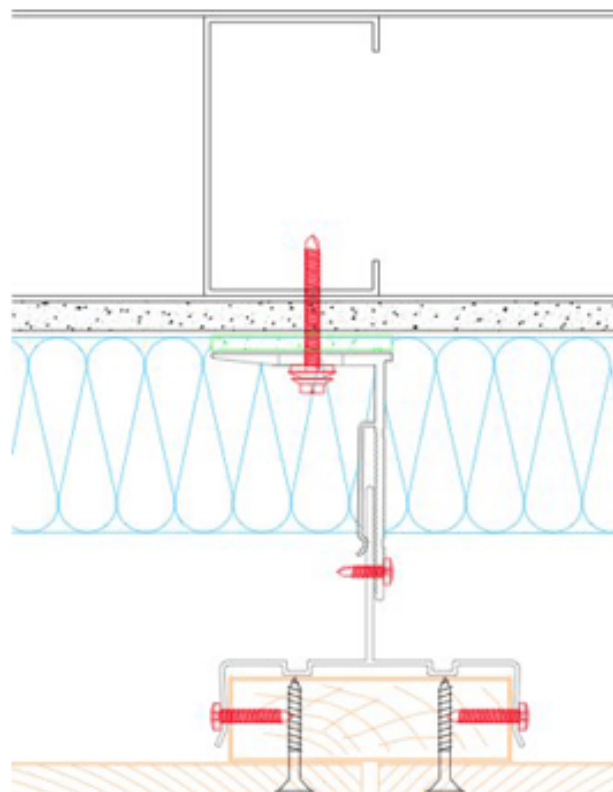


NVELOPE brackets are secured directly to a new or existing substrate of; concrete, brickwork or blockwork or steel frames. Suitable primary anchors are employed to position the brackets to a pre-determined grid to suit the panel layout - please liaise directly with preferred NVELOPE Primary Fixing supplier re pull-out.

In addition, if there is no sheathing board, the isolation of two different metals must be considered for two reasons; 1: bimetallic corrosion 2: thermal bridging. The use of NVELOPE isolator pad will achieve this.

Please see:  
[www.nvelope.com/documents/Nvelope\\_Isolator\\_M](http://www.nvelope.com/documents/Nvelope_Isolator_M)

Or please liaise with NVELOPE  
Technical Department:  
[project@nvelope.com](mailto:project@nvelope.com)

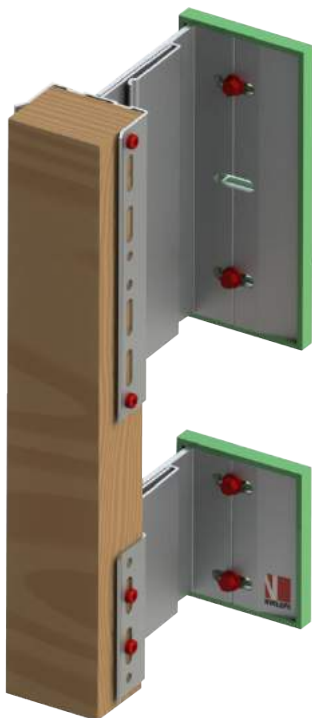


# NVELOPE Vertical Battens.

NV6

## Vertical Battens

Once a line of vertical brackets is installed, a 100mm or 50mm wide (a minimum thickness of 32mm) batten can be attached using timber carrier at each bracket position. (As the cladding will follow any irregularity or miss-alignment of battens, it is important that time is taken to align / level the framework to a high standard).



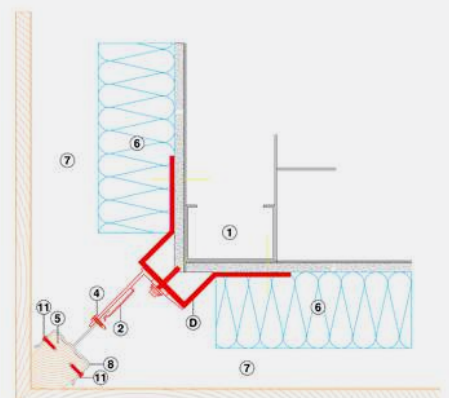
- Each batten should be cut to the required length.
  - Place the batten in each of the carriers.
  - Move the battens into its vertical position - allowing 10mm 'expansion' between battens.
  - The batten carrier can then be eased outwards to form the specified cavity depth.
  - Check for line and level.
- Secure the batten using dia 4.8 x 25 stainless steel wood screws in 'holes' or 'slots'\*\*. The correct combination or 'mix' of single brackets / double brackets may be determined by our response to a completed 'Project Builder' (see [www.nvelope.com](http://www.nvelope.com)) which will differentiate between single / double brackets / fixed point / sliding point fixing and horizontal / vertical bracket positioning - please speak to NVELOPE Technical: [project@nvelope.com](mailto:project@nvelope.com)

## Important

Generally, battens are cut to lengths that reflect the height of the panel(s) that are going to be hung on them. Typically storey-height battens are cut so that the panel(s) are located on one set of vertical battens and does not 'bridge' an expansion gap between two profiles.

\*\*As each batten is secured to the carrier ONE, near the centre of the profile, MUST be connected with fixings going through the HOLES. (Fixed point) ALL other brackets should then be fixed in the SLOTS (sliding point).

For precise fixed point and sliding points - speak to NVELOPE for a project specific static calculation to be prepared.



# NVELOPE Installation.



## Insulation

Where insulation is specified, it should be cut and tightly butted around the brackets and secured with the appropriate fixings. Sufficient insulation fixings should be provided to ensure that the insulation cannot block the ventilated cavity.



NVELOPE Rainscreen Systems Ltd.

Unit 10 Blenheim Court  
Brownfields  
Welwyn Garden City  
Herts  
AL7 1AD

T: +44 (0)1707 333 396

[www.nvelope.com](http://www.nvelope.com)

We reserve the right to change technical modifications. No responsibility is taken for detail changes or printing mistakes of the details provided.

## Vertical Cladding Installation (General)

Where vertical cladding is required the system must be installed vertically and the use of counter battens used to allow the vertical cladding to be installed this means an allowance in bracket size reduction to suit the overall build-up of the desired cladding layout.

## Cladding Installation (General)

- Check batten positions in relation to actual panel positions.
- Raise the cladding and support in vertical position.
- Adjust level and height of cladding before fitting next panel above.
- Repeated on next panels.
- Panel joints should follow the manufactures recommendations re joint gaps horizontal and vertical.

## Site Checklist

To help with a smooth installation of our rainscreen support systems there are a few things to be taken into account.

Please see check list below:



Has a project specific project builder been completed?

➤ [www.nvelope.com/project-builder-landing](http://www.nvelope.com/project-builder-landing)



If you or colleagues are new to our system, have you requested a tool box talk?

➤ [www.nvelope.com/nvelope-contact-us](http://www.nvelope.com/nvelope-contact-us)



Have you referred to our data sheets and installation guides available on our website?

➤ [www.nvelope.com/nvelope-our-downloads-system-guide](http://www.nvelope.com/nvelope-our-downloads-system-guide)



Has a successful pull out test been completed?

➤ [www.nvelope.com](http://www.nvelope.com)



Once these tasks have been completed and installation starts you can send our team a photo of a selection of brackets for technical to sign off or advise.

➤ [sitesupport@nvelope.com](mailto:sitesupport@nvelope.com)

➤ 01707 333 396



Also download / refer to NV1