

Facade System

Ventilated facade EL-CB-RFC

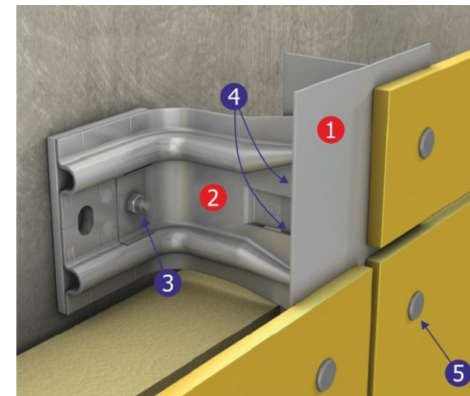
Elemental-Concrete Bracket-Rivet Fibre Cement

FIBRE CEMENT, Cement, mineralized
cellulose fibers and silica

Face Fix onto 1-layer - Metal substructure

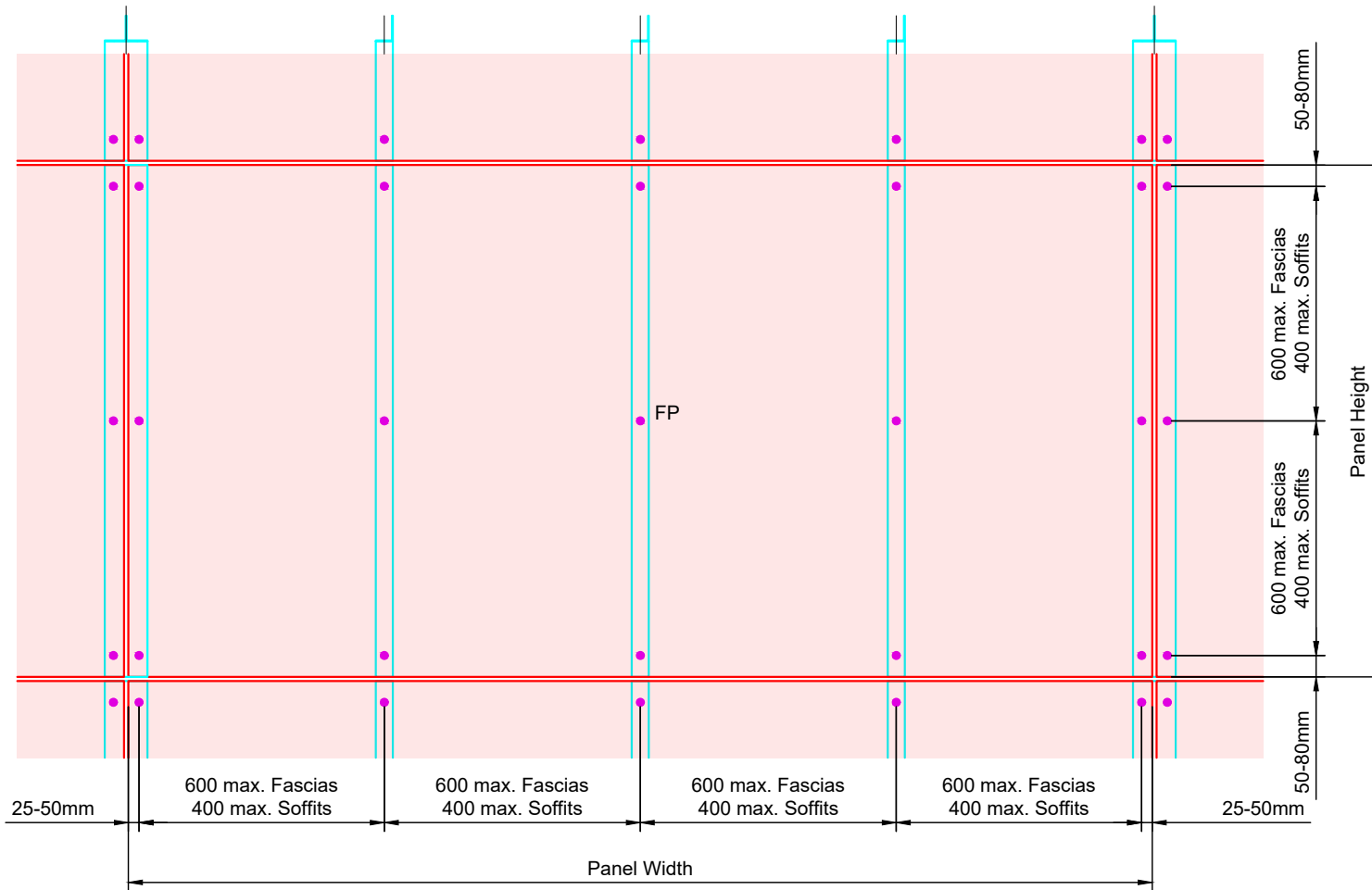
Contents:

EL-CB-RFC01	SYSTEM LAYOUT
EL-CB-RFC02	BRACKET TYPES AVAILABLE
EL-CB-RFC03	BASE DETAIL
EL-CB-RFC04	HORIZONTAL PANEL JOINT DETAIL
EL-CB-RFC05	VERTICAL PANEL JOINT DETAIL
EL-CB-RFC06	INTERMEDIATE SUPPORT DETAIL
EL-CB-RFC07	BUILDING STRUCTURAL MOVEMENT JOINT
EL-CB-RFC08	EXTERNAL CORNER DETAIL
EL-CB-RFC09	INTERNAL CORNER - OPEN JOINT OPTION
EL-CB-RFC10	GENERIC PARAPET DETAIL
EL-CB-RFC11	WINDOW CILL DETAIL
EL-CB-RFC12	WINDOW HEAD DETAIL
EL-CB-RFC13	WINDOW JAMB REVEAL DETAIL



- 1 'L' or 'T' Rail
 - 2 Support Bracket
- FIXINGS:**
- 3 Bracket to Wall Fixings/Anchors
 - 4 Rail to Bracket Fixings
 - 5 Colour Coordinated Rivets

These drawings are indicative only, for use as a guide. The customer is always responsible for any specific design, structural calculations and calculating exact sizes & quantities of panels. Any project details and calculations supplied by Elemental Architectural Cladding Specialists are provided in good faith and should always be checked and approved by the project engineer responsible. Elemental Architectural Cladding Specialists will not accept any liability should the system be designed / installed incorrectly.



Face Fixing Guidelines

- Panels should be drilled with one fixed point nearest to the centre of the panel (FP - 4.9mm) and all others as sliding points (SP-9.5mm).
- Holes in the subframe should all be drilled 4.9mm using a centralising tool.
- Rivets specification:
 - **8mm Fiber Cement**- Large flange Al or S/S Ø16mm Head 4.8x18mm (grip range 6.0:12.5mm)
 - **10mm Fibre Cement** - Large flange Al or S/S Ø16mm Head 4.8x23mm (grip range 11.0:19.5mm)
- **Rivets should always be installed using a Centralising Tool and a Special Nose Piece** G3 Thread M10 x 1 16mm head allowing a 0.3mm clearance for stress free mounting of the Rivets.
- **Centres of fixings shown are the absolute maximum. Project wind loads should be checked against load tables in the Fiber cement Technical Guide.**

Riven surface also requires the use of Black Rubber Gasket Washer 4.3x1x14 on the rivet.



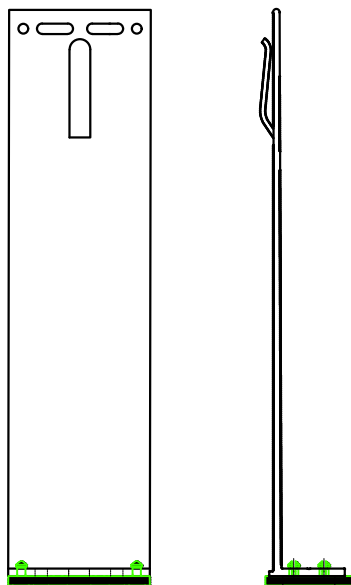
Elemental Architectural Cladding Specialists
 #29 The Cubes Offices, Beacon South Quarter,
 Sandyford
 Dublin 18, D18 A264
 Phone: +353 (0)1 293 8951
 Email: info@elemental.ie

Drawing Title	ELEMENTAL FIBRE CEMENT - FACE FIX SYSTEM LAYOUT										
Drawing No.	EL-CB-RFC01	System:	EL-Rivet Fibre Cement	Size:	A4	Scale:	NTS	Drawn:	V.C.	Rev.	01

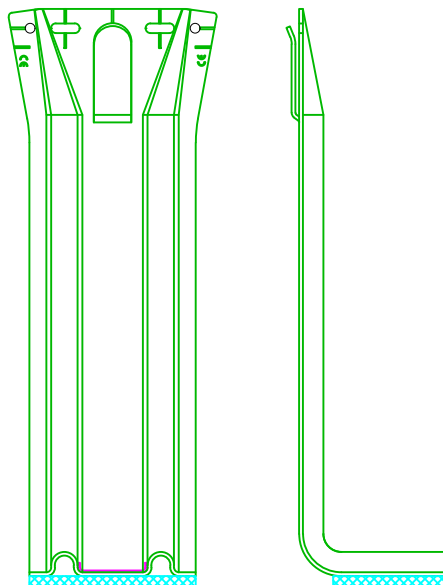
These drawings are indicative only, for use as a guide. The customer is always responsible for any specific design, structural calculations and calculating exact sizes & quantities of panels. Any project details and calculations supplied by Elemental Architectural Cladding Specialists are provided in good faith and should always be checked and approved by the project engineer responsible. Elemental Architectural Cladding Specialists will not accept any liability should the system be designed / installed incorrectly.

BRACKET TYPES AVAILABLE FROM ELEMENTAL

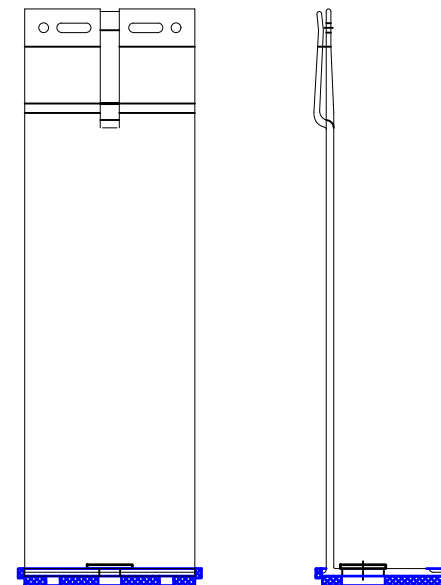
SPIDI LIGHT



SPIDI MAX



ALLFACE



Elemental Architectural Cladding Specialists
 #29 The Cubes Offices, Beacon South Quarter,
 Sandyford
 Dublin 18, D18 A264
 Phone: +353 (0)1 293 8951
 Email: info@elemental.ie

Drawing Title

BRACKET TYPES AVAILABLE

Drawing No.

EL-CB-RFC02

System:

EL-Rivet
Fibre Cement

Size:

A4

Scale:

NTS

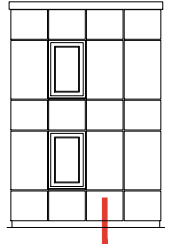
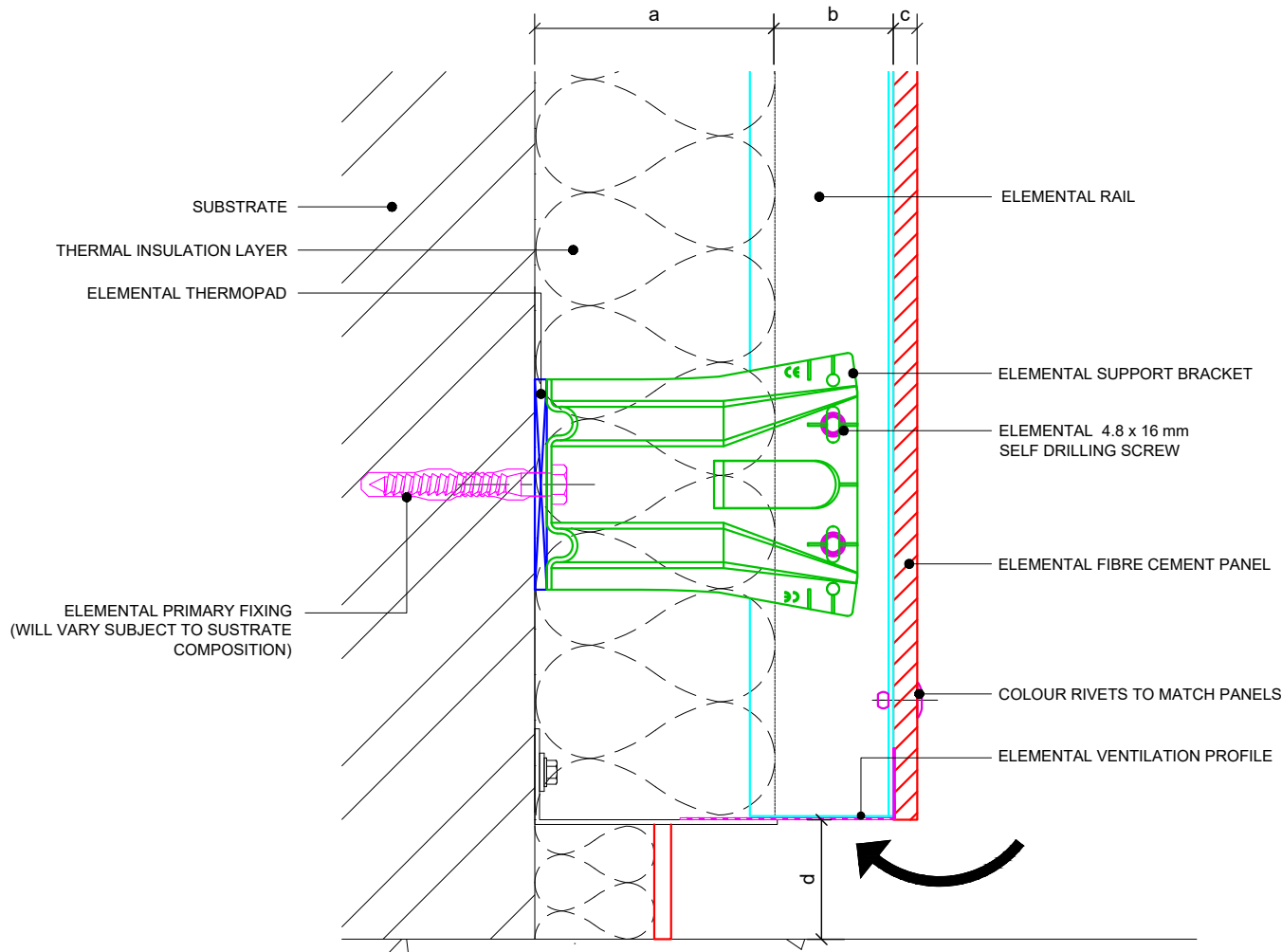
Drawn:

V.C.

Rev.

01

These drawings are indicative only, for use as a guide. The customer is always responsible for any specific design, structural calculations and calculating exact sizes & quantities of panels. Any project details and calculations supplied by Elemental Architectural Cladding Specialists are provided in good faith and should always be checked and approved by the project engineer responsible. Elemental Architectural Cladding Specialists will not accept any liability should the system be designed / installed incorrectly.



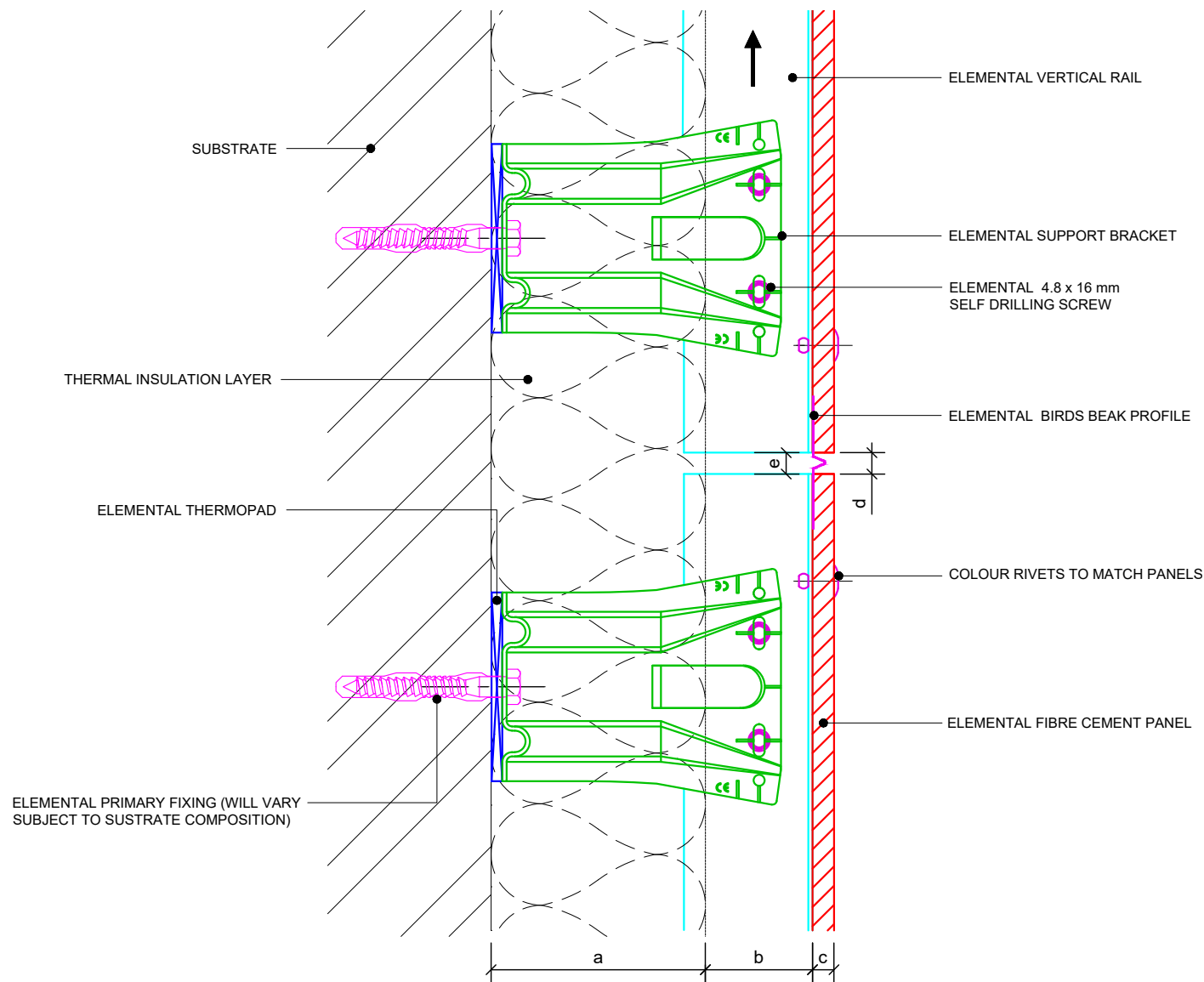
Dimensions	
a	Insulation thickness (varies)
b	Free vertical ventilation gap
c	Panel nominal thickness
d	Base distance - Minimum 50mm
a+b	Clad Zone



Elemental Architectural Cladding Specialists
 #29 The Cubes Offices, Beacon South Quarter,
 Sandyford
 Dublin 18, D18 A264
 Phone: +353 (0)1 293 8951
 Email: info@elemental.ie

Drawing Title	ELEMENTAL FIBRE CEMENT - FACE FIX BASE DETAIL										
Drawing No.	EL-CB-RFC03	System:	EL-Rivet Fibre Cement	Size:	A4	Scale:	NTS	Drawn:	V.C.	Rev.	01

These drawings are indicative only, for use as a guide. The customer is always responsible for any specific design, structural calculations and calculating exact sizes & quantities of panels. Any project details and calculations supplied by Elemental Architectural Cladding Specialists are provided in good faith and should always be checked and approved by the project engineer responsible. Elemental Architectural Cladding Specialists will not accept any liability should the system be designed / installed incorrectly.



Dimensions	
a	Insulation thickness (varies)
b	Free vertical ventilation gap
c	Panel nominal thickness
d	Panel Joint - 10mm
e	Rail Joint - Minimum 10mm (cladding panels should not be fixed to two adjacent vertical rails)
a+b	Clad Zone



Elemental Architectural Cladding Specialists
 #29 The Cubes Offices, Beacon South Quarter,
 Sandyford
 Dublin 18, D18 A264
 Phone: +353 (0)1 293 8951
 Email: info@elemental.ie

Drawing Title

**ELEMENTAL FIBRE CEMENT - FACE FIX
 HORIZONTAL PANEL JOINT DETAIL**

Drawing No.

EL-CB-RFC04

System:

**EL-Rivet
 Fibre Cement**

Size:

A4

Scale:

NTS

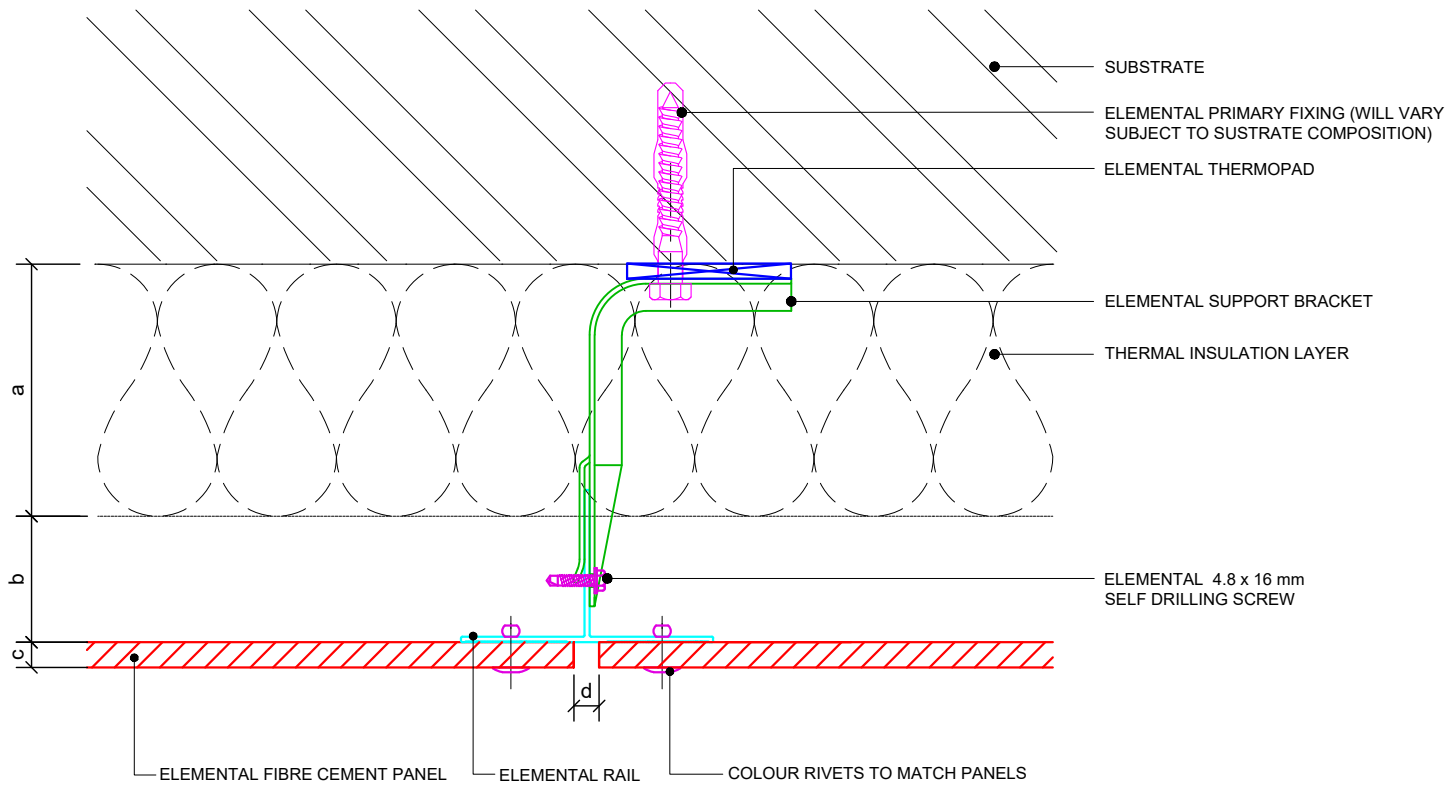
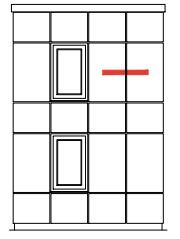
Drawn:

V.C.

Rev.

01

These drawings are indicative only, for use as a guide. The customer is always responsible for any specific design, structural calculations and calculating exact sizes & quantities of panels. Any project details and calculations supplied by Elemental Architectural Cladding Specialists are provided in good faith and should always be checked and approved by the project engineer responsible. Elemental Architectural Cladding Specialists will not accept any liability should the system be designed / installed incorrectly.



Dimensions	
a	Insulation thickness (varies)
b	Free vertical ventilation gap
c	Panel nominal thickness
d	Panel Joint - 10mm
a+b	Clad Zone

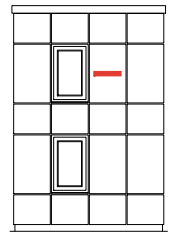
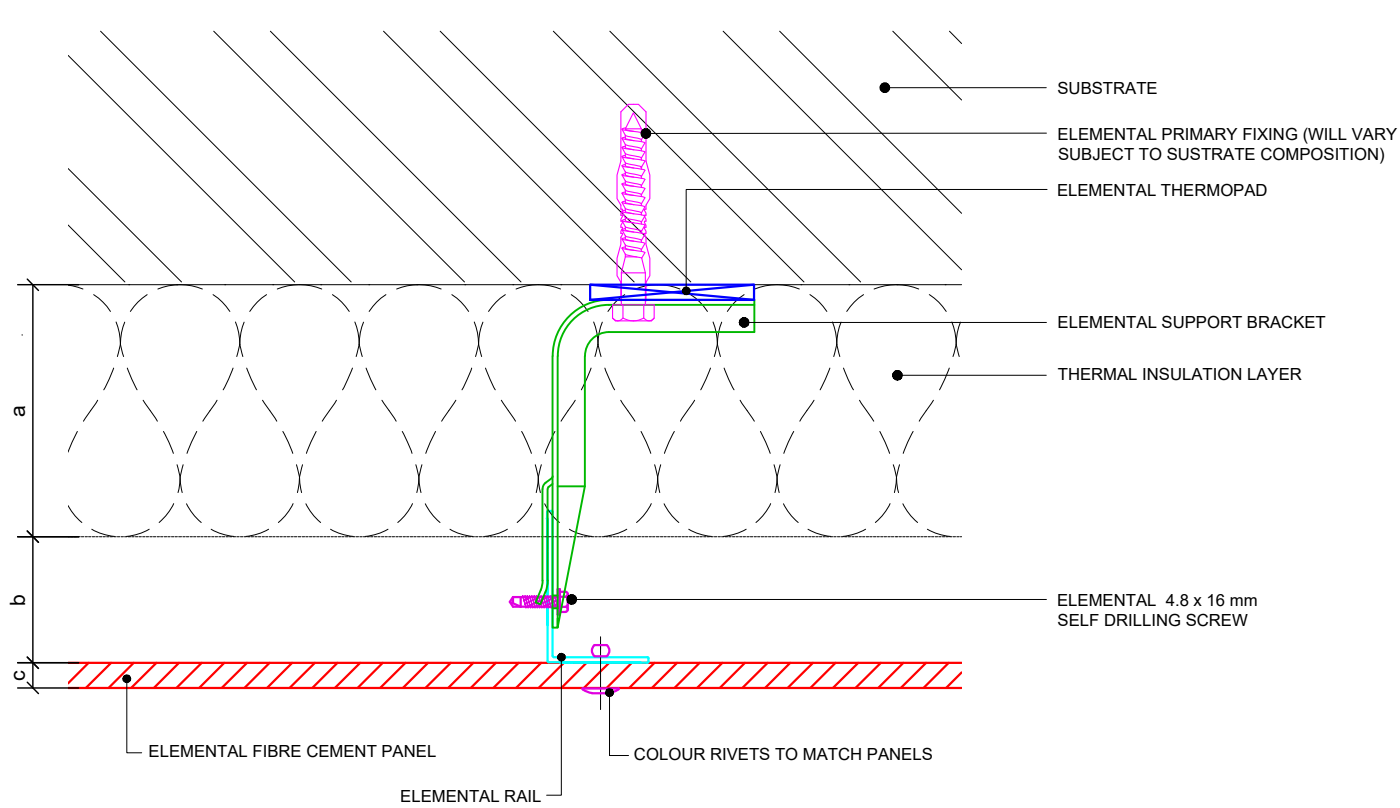


Elemental Architectural Cladding Specialists
 #29 The Cubes Offices, Beacon South Quarter,
 Sandyford
 Dublin 18, D18 A264
 Phone: +353 (0)1 293 8951
 Email: info@elemental.ie

Drawing Title	ELEMENTAL FIBRE CEMENT - FACE FIX VERTICAL PANEL JOINT DETAIL										
Drawing No.	EL-CB-RFC05	System:	EL-Rivet Fibre Cement	Size:	A4	Scale:	NTS	Drawn:	V.C.	Rev.	01

Elemental Architectural Cladding Specialists reserve the right to amend details at any time without prior notice. Reproduction or disclosure to third parties is strictly prohibited and can only be attained through signed, written consent from Elemental ACS.

These drawings are indicative only, for use as a guide. The customer is always responsible for any specific design, structural calculations and calculating exact sizes & quantities of panels. Any project details and calculations supplied by Elemental Architectural Cladding Specialists are provided in good faith and should always be checked and approved by the project engineer responsible. Elemental Architectural Cladding Specialists will not accept any liability should the system be designed / installed incorrectly.



Dimensions	
a	Insulation thickness (varies)
b	Free vertical ventilation gap
c	Panel nominal thickness
a+b	Clad Zone

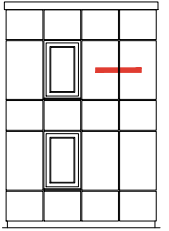
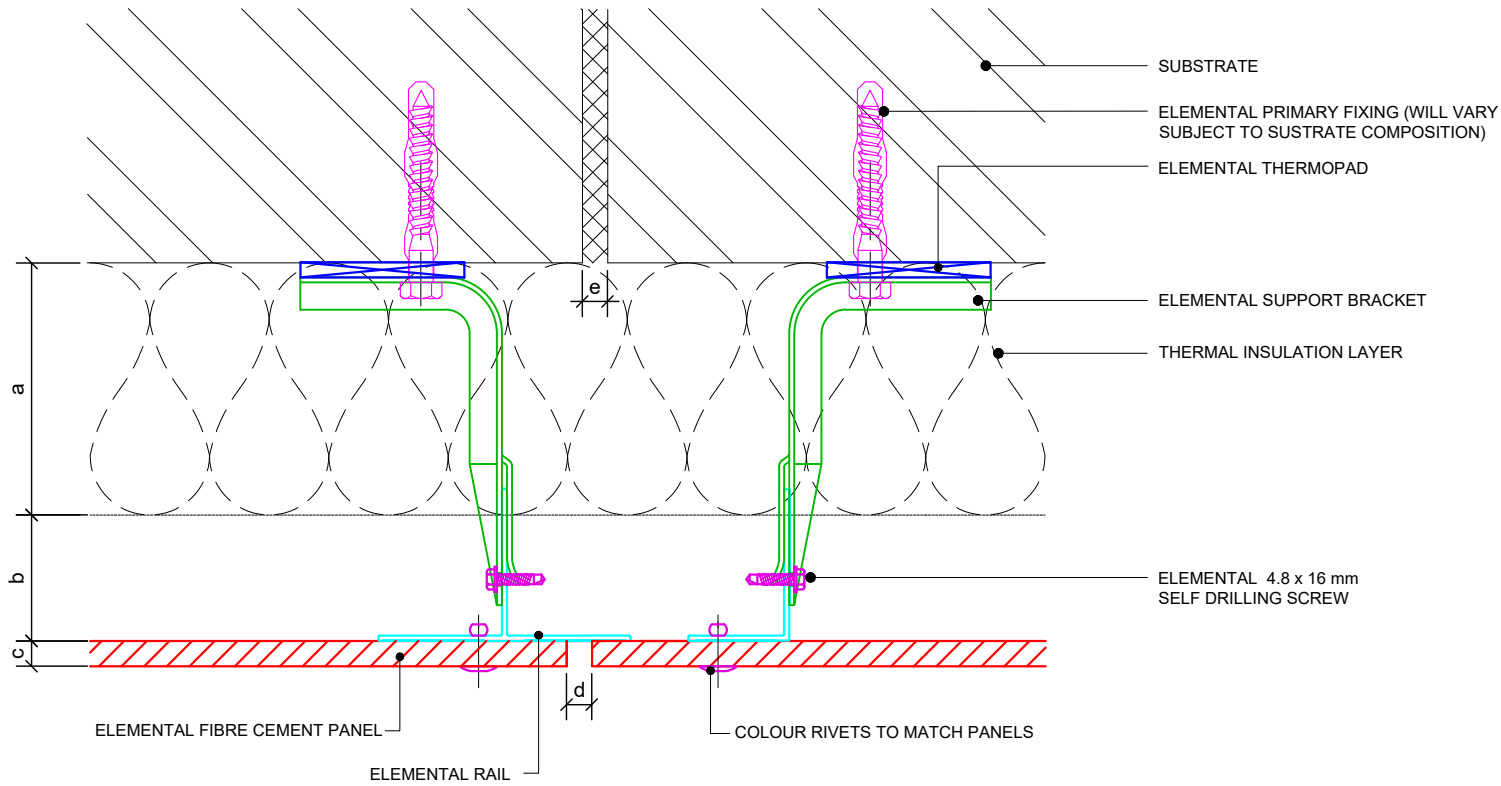


Elemental Architectural Cladding Specialists
 #29 The Cubes Offices, Beacon South Quarter,
 Sandyford
 Dublin 18, D18 A264
 Phone: +353 (0)1 293 8951
 Email: info@elemental.ie

**ELEMENTAL FIBRE CEMENT - FACE FIX
 INTERMEDIATE SUPPORT DETAIL**

EL-CB-RFC06	System:	EL-Rivet Fibre Cement	Size:	A4	Scale:	NTS	Drawn:	V.C.	Rev.	01
-------------	---------	--------------------------	-------	----	--------	-----	--------	------	------	----

These drawings are indicative only, for use as a guide. The customer is always responsible for any specific design, structural calculations and calculating exact sizes & quantities of panels. Any project details and calculations supplied by Elemental Architectural Cladding Specialists are provided in good faith and should always be checked and approved by the project engineer responsible. Elemental Architectural Cladding Specialists will not accept any liability should the system be designed / installed incorrectly.



Dimensions	
a	Insulation thickness (varies)
b	Free vertical ventilation gap
c	Panel nominal thickness
d	Panel Joint - 10mm / to match building movement joint
e	Building Structural Movement Joint
a+b	Clad Zone



Elemental Architectural Cladding Specialists
 #29 The Cubes Offices, Beacon South Quarter,
 Sandyford
 Dublin 18, D18 A264
 Phone: +353 (0)1 293 8951
 Email: info@elemental.ie

Drawing Title

**ELEMENTAL FIBRE CEMENT - FACE FIX
 BUILDING STRUCTURAL MOVEMENT JOINT**

Drawing No.

EL-CB-RFC07

System:

**EL-Rivet
 Fibre Cement**

Size:

A4

Scale:

NTS

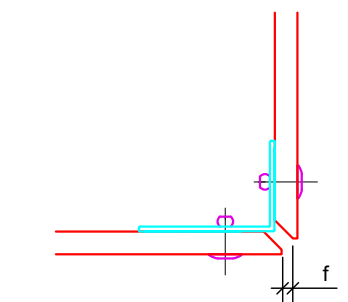
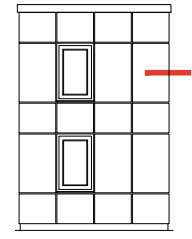
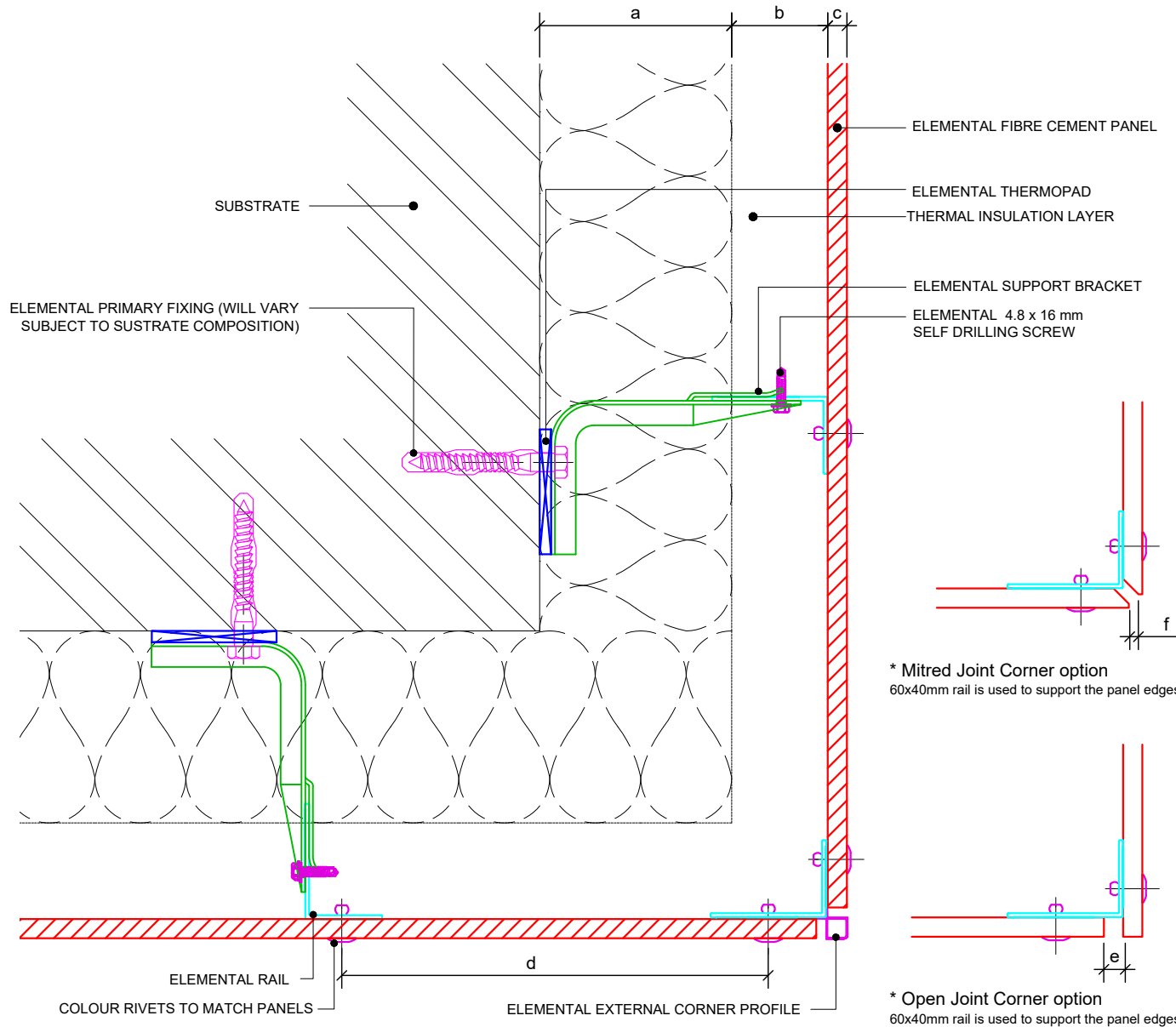
Drawn:

V.C.

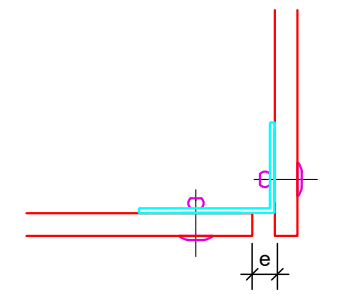
Rev.

01

These drawings are indicative only, for use as a guide. The customer is always responsible for any specific design, structural calculations and calculating exact sizes & quantities of panels. Any project details and calculations supplied by Elemental Architectural Cladding Specialists are provided in good faith and should always be checked and approved by the project engineer responsible. Elemental Architectural Cladding Specialists will not accept any liability should the system be designed / installed incorrectly.



* Mitred Joint Corner option
60x40mm rail is used to support the panel edges



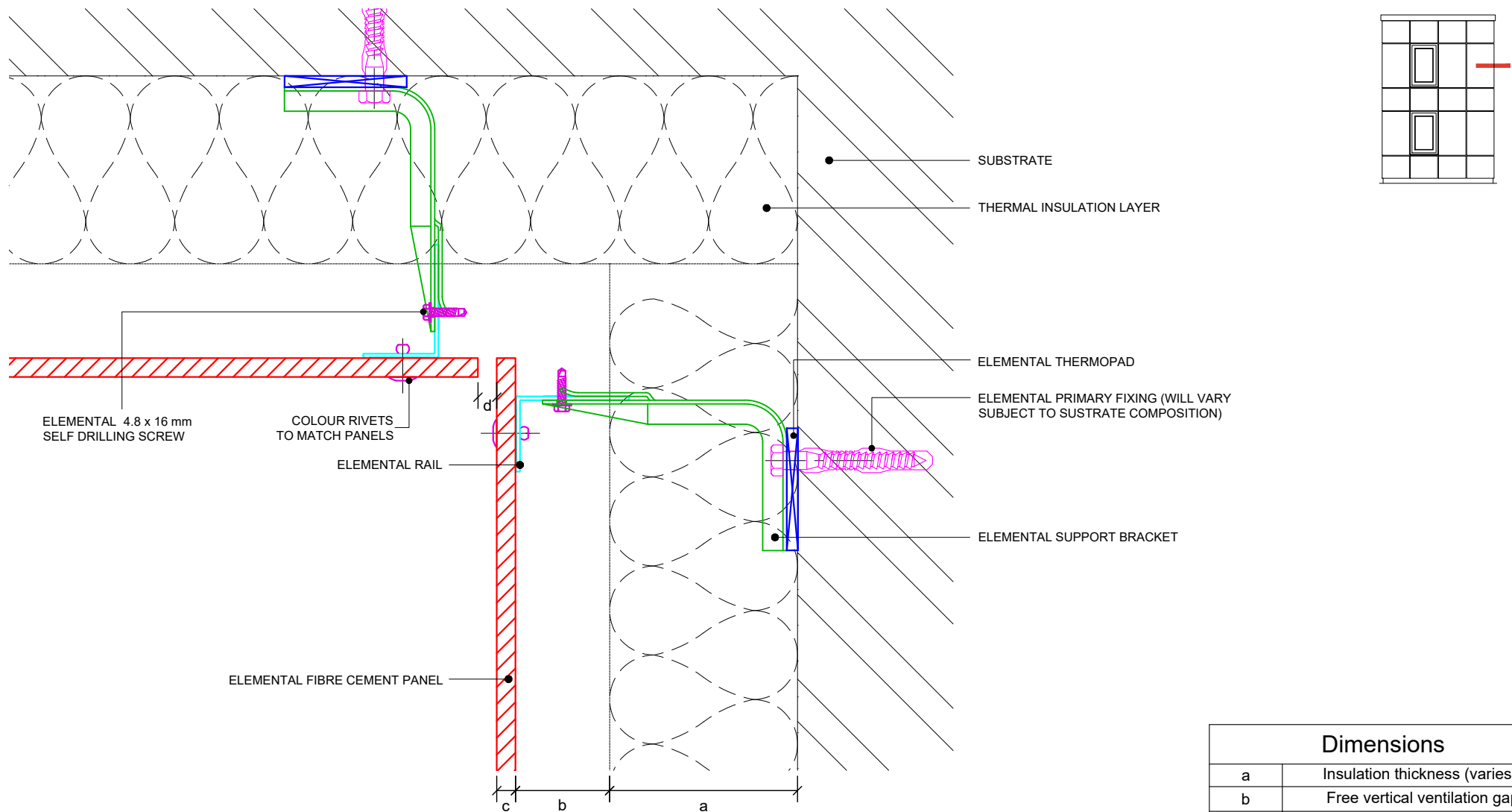
* Open Joint Corner option
60x40mm rail is used to support the panel edges

Dimensions	
a	Insulation thickness (varies)
b	Free vertical ventilation gap
c	Panel nominal thickness
d	≤ 300mm
e	Panel Joint - 10mm
f	Mitred Joint projection - 5mm
a+b	Clad Zone

Elemental Architectural Cladding Specialists
 #29 The Cubes Offices, Beacon South Quarter,
 Sandyford
 Dublin 18, D18 A264
 Phone: +353 (0)1 293 8951
 Email: info@elemental.ie

Drawing Title		ELEMENTAL FIBRE CEMENT - FACE FIX EXTERNAL CORNER DETAILS									
Drawing No.	EL-CB-RFC08	System:	EL-Rivet Fibre Cement	Size:	A4	Scale:	NTS	Drawn:	V.C.	Rev.	01

These drawings are indicative only, for use as a guide. The customer is always responsible for any specific design, structural calculations and calculating exact sizes & quantities of panels. Any project details and calculations supplied by Elemental Architectural Cladding Specialists are provided in good faith and should always be checked and approved by the project engineer responsible. Elemental Architectural Cladding Specialists will not accept any liability should the system be designed / installed incorrectly.



Dimensions	
a	Insulation thickness (varies)
b	Free vertical ventilation gap
c	Panel nominal thickness
d	Panel Joint - 10mm
a+b	Clad Zone



Elemental Architectural Cladding Specialists
 #29 The Cubes Offices, Beacon South Quarter,
 Sandyford
 Dublin 18, D18 A264
 Phone: +353 (0)1 293 8951
 Email: info@elemental.ie

Drawing Title

**ELEMENTAL FIBRE CEMENT - FACE FIX
 INTERNAL CORNER - OPEN JOINT OPTION**

Drawing No.

EL-CB-RFC09

System:

**EL-Rivet
 Fibre Cement**

Size:

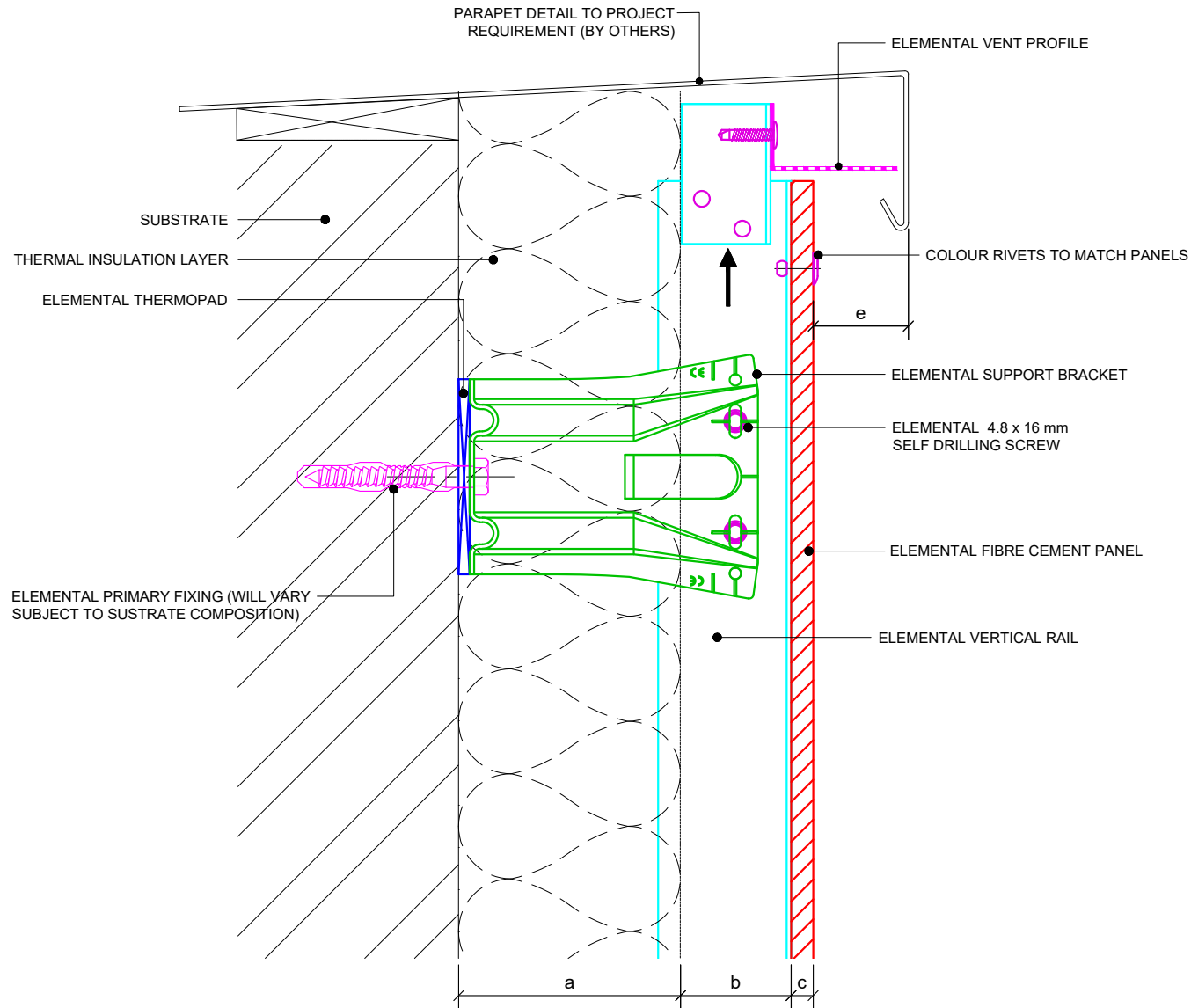
NTS

Drawn: **V.C.**

Rev.

01

These drawings are indicative only, for use as a guide. The customer is always responsible for any specific design, structural calculations and calculating exact sizes & quantities of panels. Any project details and calculations supplied by Elemental Architectural Cladding Specialists are provided in good faith and should always be checked and approved by the project engineer responsible. Elemental Architectural Cladding Specialists will not accept any liability should the system be designed / installed incorrectly.



Dimensions	
a	Insulation thickness (varies)
b	Free vertical ventilation gap
c	Panel nominal thickness
a+b	Clad Zone



Elemental Architectural Cladding Specialists
 #29 The Cubes Offices, Beacon South Quarter,
 Sandyford
 Dublin 18, D18 A264
 Phone: +353 (0)1 293 8951
 Email: info@elemental.ie

Drawing Title

**ELEMENTAL FIBRE CEMENT- FACE FIX
 GENERIC PARAPET DETAIL**

Drawing No.

EL-CB-RFC10

System:

**EL-Rivet
 Fibre Cement**

Size:

A4

Scale:

NTS

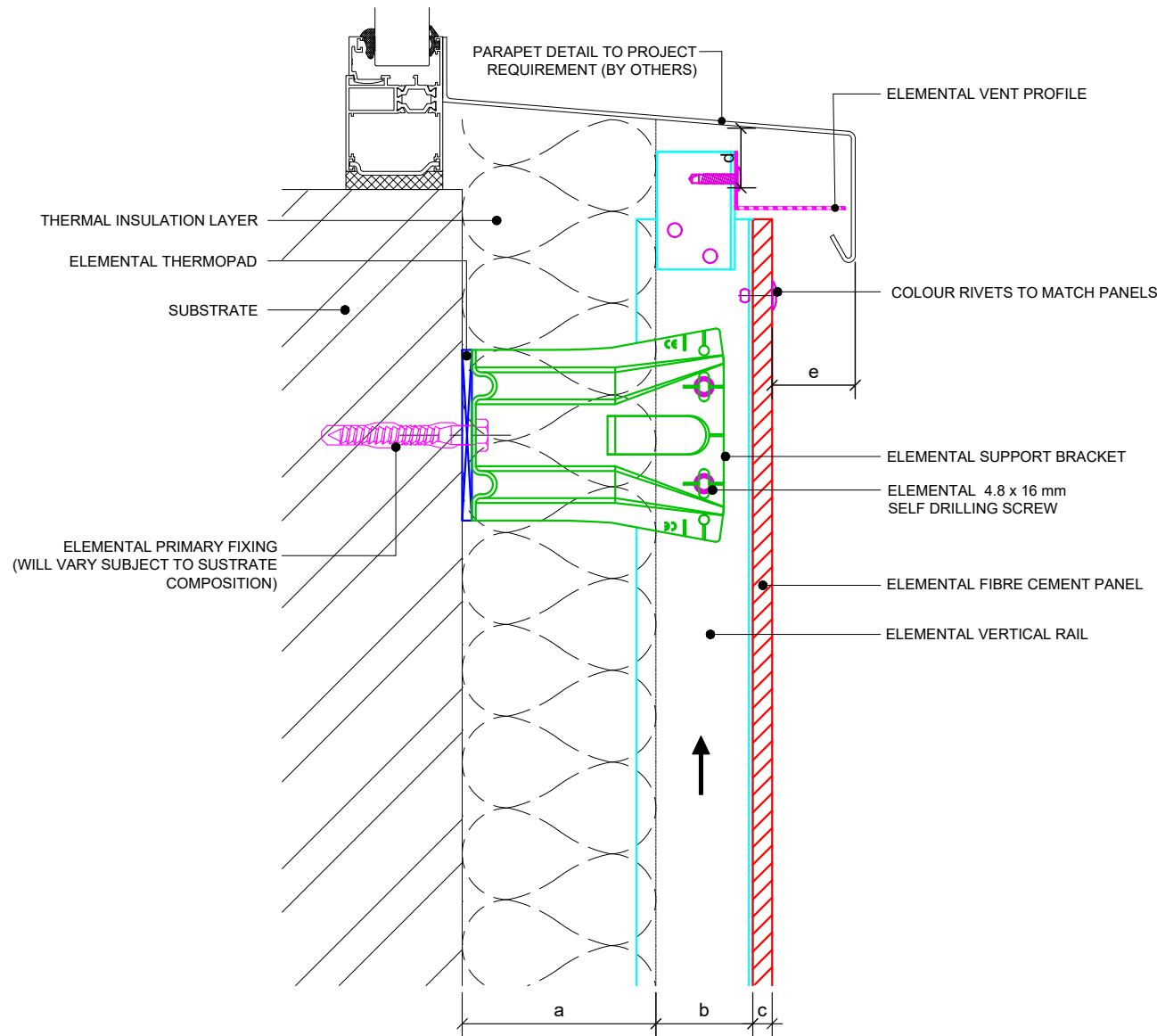
Drawn:

V.C.

Rev.

01

These drawings are indicative only, for use as a guide. The customer is always responsible for any specific design, structural calculations and calculating exact sizes & quantities of panels. Any project details and calculations supplied by Elemental Architectural Cladding Specialists are provided in good faith and should always be checked and approved by the project engineer responsible. Elemental Architectural Cladding Specialists will not accept any liability should the system be designed / installed incorrectly.



Dimensions	
a	Insulation thickness (varies)
b	Free vertical ventilation gap
c	Panel nominal thickness
d	Ventilation inlet / outlet gaps
e	≥ 40mm
a+b	Clad Zone



Elemental Architectural Cladding Specialists
 #29 The Cubes Offices, Beacon South Quarter,
 Sandyford
 Dublin 18, D18 A264
 Phone: +353 (0)1 293 8951
 Email: info@elemental.ie

Drawing Title

**ELEMENTAL FIBRE CEMENT - FACE FIX
 WINDOW CILL DETAIL**

Drawing No.

EL-CB-RFC11

System:

**EL-Rivet
 Fibre Cement**

Size:

A4

Scale:

NTS

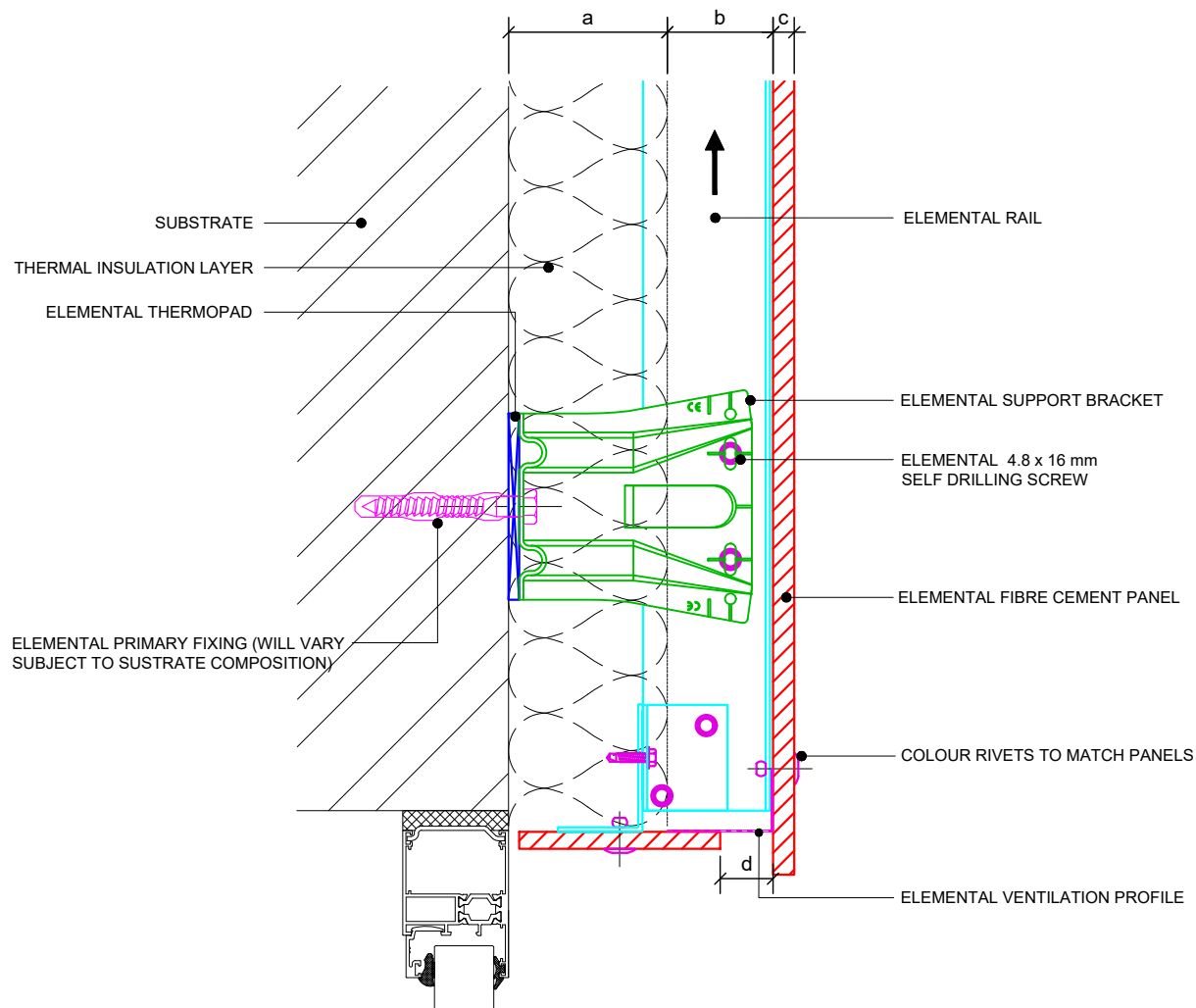
Drawn:

V.C.

Rev.

01

These drawings are indicative only, for use as a guide. The customer is always responsible for any specific design, structural calculations and calculating exact sizes & quantities of panels. Any project details and calculations supplied by Elemental Architectural Cladding Specialists are provided in good faith and should always be checked and approved by the project engineer responsible. Elemental Architectural Cladding Specialists will not accept any liability should the system be designed / installed incorrectly.

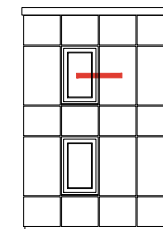
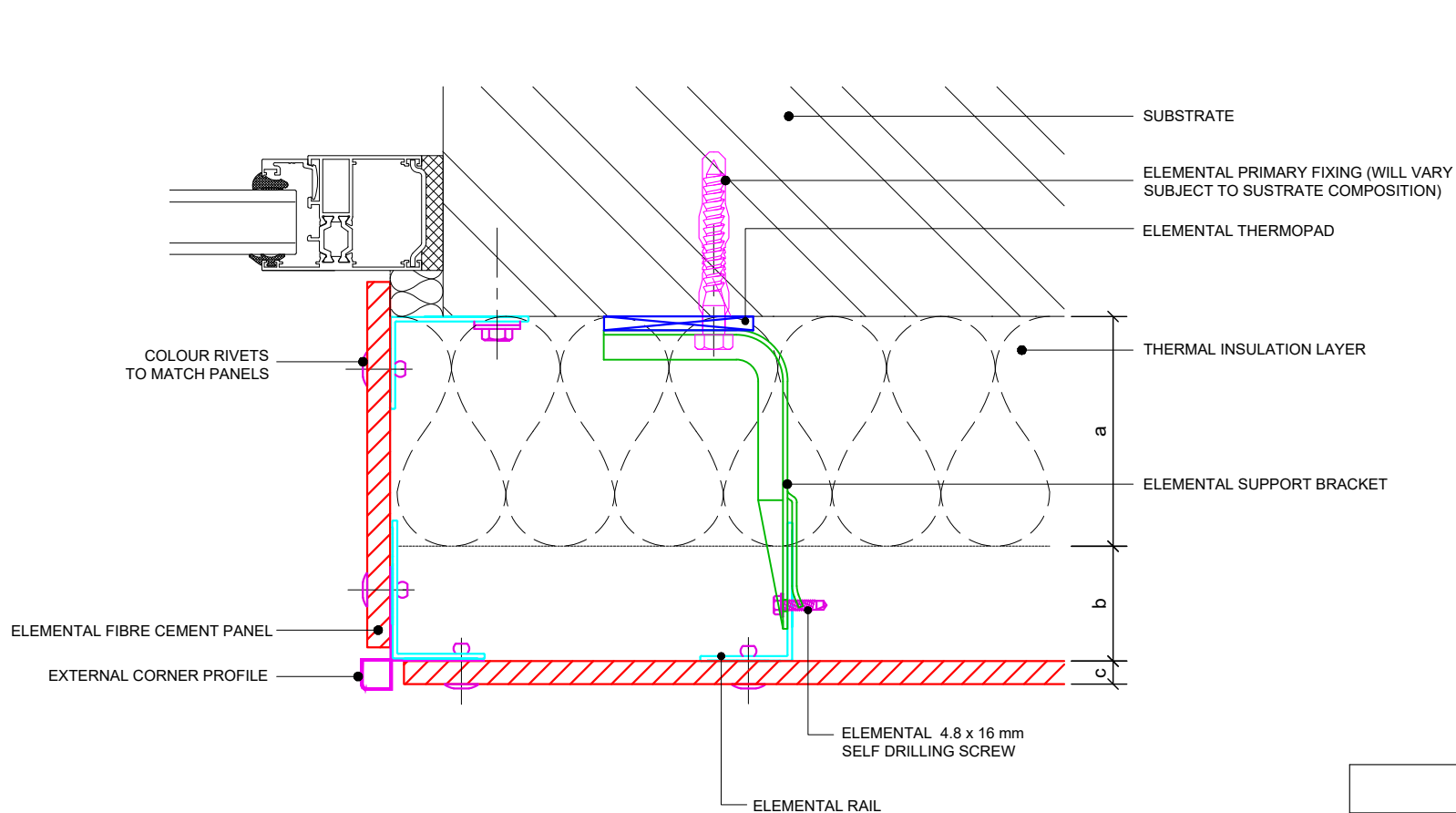


Dimensions	
a	Insulation thickness (varies)
b	Free vertical ventilation gap
c	Panel nominal thickness
d	Ventilation inlet / outlet gaps
a+b	Clad Zone

Elemental Architectural Cladding Specialists
 #29 The Cubes Offices, Beacon South Quarter,
 Sandyford
 Dublin 18, D18 A264
 Phone: +353 (0)1 293 8951
 Email: info@elemental.ie

Drawing Title		ELEMENTAL FIBRE CEMENT - FACE FIX WINDOW HEAD DETAIL									
Drawing No.	EL-CB-RFC12	System:	EL-Rivet Fibre Cement	Size:	A4	Scale:	NTS	Drawn:	V.C.	Rev.	01

These drawings are indicative only, for use as a guide. The customer is always responsible for any specific design, structural calculations and calculating exact sizes & quantities of panels. Any project details and calculations supplied by Elemental Architectural Cladding Specialists are provided in good faith and should always be checked and approved by the project engineer responsible. Elemental Architectural Cladding Specialists will not accept any liability should the system be designed / installed incorrectly.



Dimensions	
a	Insulation thickness (varies)
b	Free vertical ventilation gap
c	Panel nominal thickness
a+b	Clad Zone



Elemental Architectural Cladding Specialists
 #29 The Cubes Offices, Beacon South Quarter,
 Sandyford
 Dublin 18, D18 A264
 Phone: +353 (0)1 293 8951
 Email: info@elemental.ie

Drawing Title

**ELEMENTAL FIBRE CEMENT - FACE FIX
 WINDOW JAMB DETAIL**

Drawing No.

EL-CB-RFC13

System:

**EL-Rivet
 Fibre Cement**

Size:

A4

Scale:

NTS

Drawn:

V.C.

Rev.

01