

# Facade System

## Ventilated facade **EL-SB-RG**

Elemental-SFS Bracket-Rivet GFRC

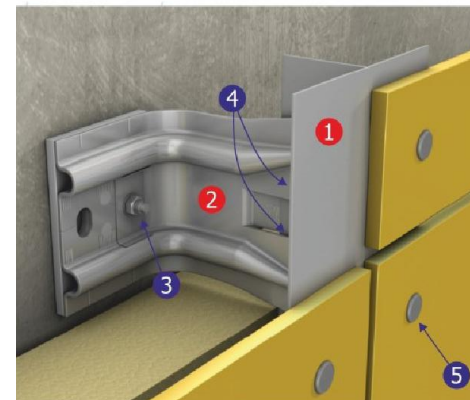
## GFRC, Glass Fiber Reinforced Concrete

GFRC  
Mechanical Rivet Fix onto 1- layer  
Metal substructure

### Contents:

EL-SB-RG01	SYSTEM LAYOUT
EL-SB-RG02	BRACKET TYPES AVAILABLE
EL-SB-RG03	BASE DETAIL
EL-SB-RG04	HORIZONTAL JOINT DETAIL - OPEN OPTION
EL-SB-RG05	JOINT PROFILE DETAILS - CLOSED OPTIONS
EL-SB-RG06	GENERIC PARAPET DETAIL
EL-SB-RG07	GENERIC PARAPET DETAILS - OPTIONS
EL-SB-RG08	INTERMEDIATE PANEL SUPPORT DETAIL
EL-SB-RG09	RAIL SUPPORT AND VERTICAL JOINT
EL-SB-RG10	BUILDING STRUCTURAL MOVEMENT JOINT
EL-SB-RG11	EXTERNAL CORNER - CONTINUOUS PANEL
EL-SB-RG12	EXTERNAL CORNER - CLOSED JOINT OPTIONS
EL-SB-RG13	INTERNAL CORNER OPTIONS
EL-SB-RG14	GENERIC WINDOW CILL DETAIL
EL-SB-RG15	GENERIC WINDOW CILL DETAIL - COMPLETE PIECE OPTION
EL-SB-RG16	WINDOW HEAD DETAIL - CLOSED JOINT OPTION
EL-SB-RG17	WINDOW HEAD DETAIL - JOINT OPTIONS
EL-SB-RG18	SOFFIT DETAIL
EL-SB-RG19	WINDOW JAMB REVEAL DETAILS
EL-SB-RG20	WINDOW JAMB REVEAL - COMPLETE PIECE OPTION 1
EL-SB-RG21	WINDOW JAMB REVEAL - COMPLETE PIECE OPTION 2

Image for illustration purposes



1 'L' or 'T' Rail

2 Support Bracket

#### FIXINGS:

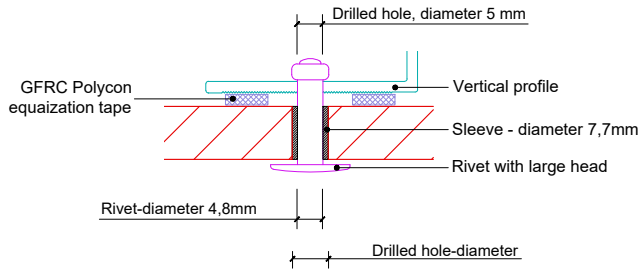
3 Bracket to Wall Fixings/Anchors

4 Rail to Bracket Fixings

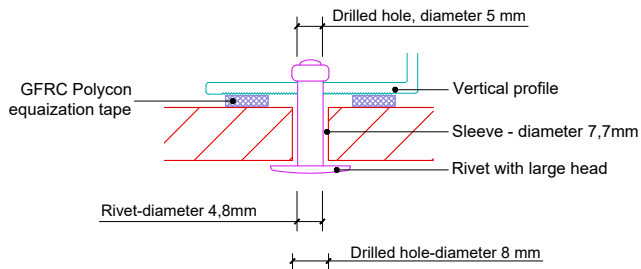
5 Colour Coordinated Rivets

These drawings are indicative only, for use as a guide. The customer is always responsible for any specific design, structural calculations and calculating exact sizes & quantities of panels. Any project details and calculations supplied by Elemental Architectural Cladding Specialists are provided in good faith and should always be checked and approved by the project engineer responsible. Elemental Architectural Cladding Specialists will not accept any liability should the system be designed / installed incorrectly.

### Fixed point



### Fixed point



### Blind rivet with a large head

Panel thickness: 10/13/15 mm  
 Dimensions: Ø 4,8 x 20/22/24 mm  
 Head diameter 16 mm

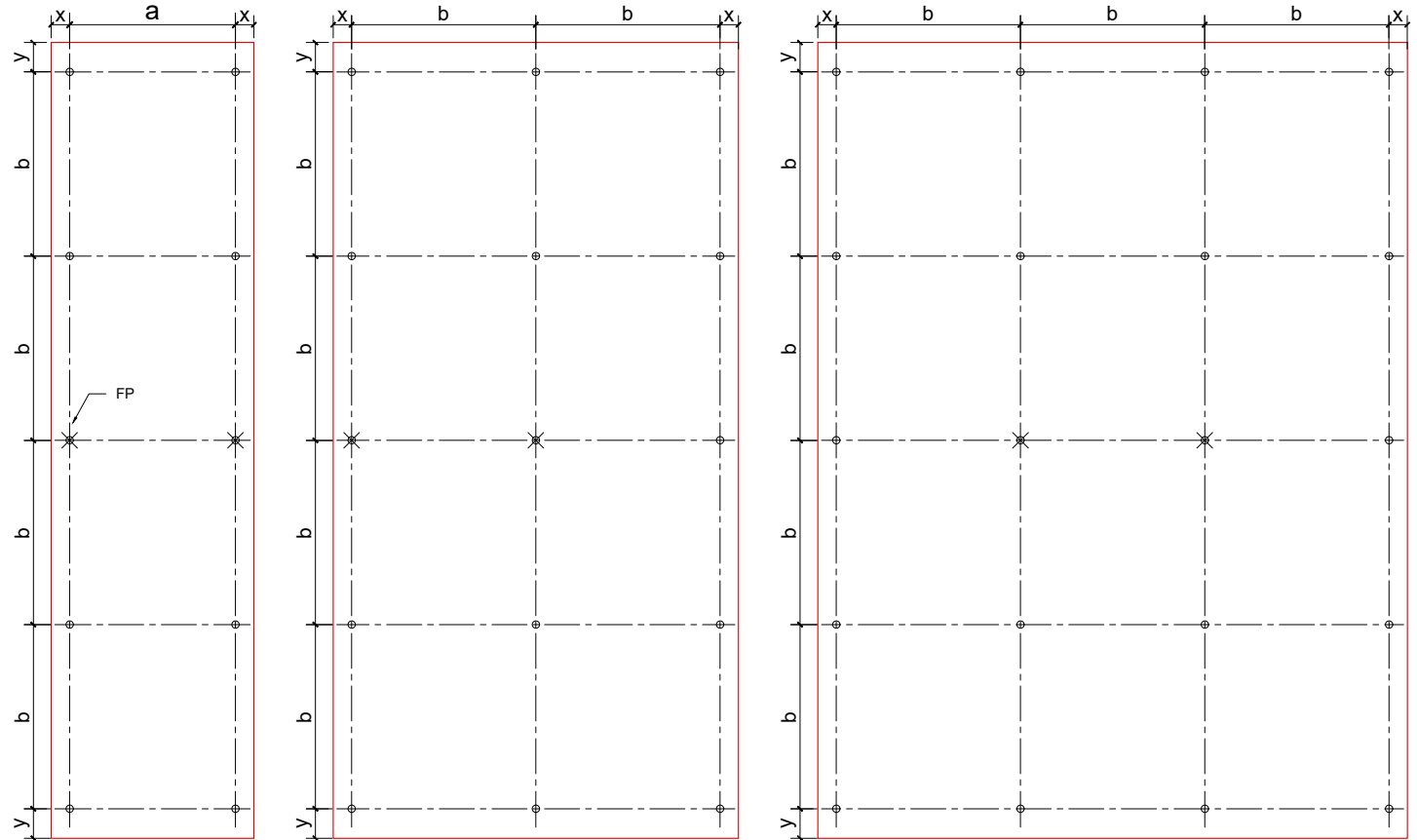
### Sleeve of fixed point

Panel thickness: 10/13/15 mm  
 Dimensions: Ø 7,7 x 5 x 9/11/14 mm

Diameter of holes drilled in the Polycon panels Ø 8 mm  
 Diameter of holes drilled in the construction diameter 5 mm

### Equalization tape

Material: rubber adhesive tape  
 Dimensions: 10 x 3 mm



Panel thickness diameter	10 mm	13 mm	15 mm
Maximum spacing "a"	450 mm	500 mm	550 mm
Maximum spacing "b"	500 mm	550 mm	600 mm
Distance from the edge "x"	40-50 mm		
Distance from the edge "y"	50-80 mm		

Spacing indicated in the above table can be used as a basis for the initial layout but they must be agreed with the static analysis.



**Elemental Architectural Cladding Specialists**  
 #29 The Cubes Offices, Beacon South Quarter,  
 Sandyford  
 Dublin 18, D18 A264  
 Phone: +353 (0)1 293 8951  
 Email: info@elemental.ie

Drawing Title

**ELEMENTAL GFRP - RIVET FIX  
 SYSTEM LAYOUT**

Drawing No.

EL-SB-RG01

System:

EL-MSF  
 GFRP

Size:

A4

Scale:

NTS

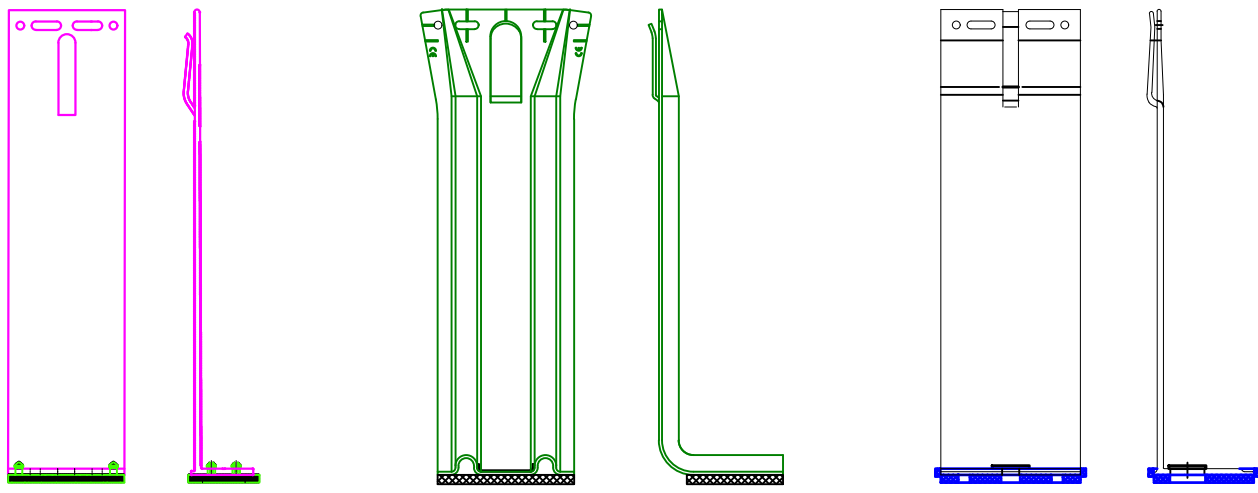
Drawn:

V.C.

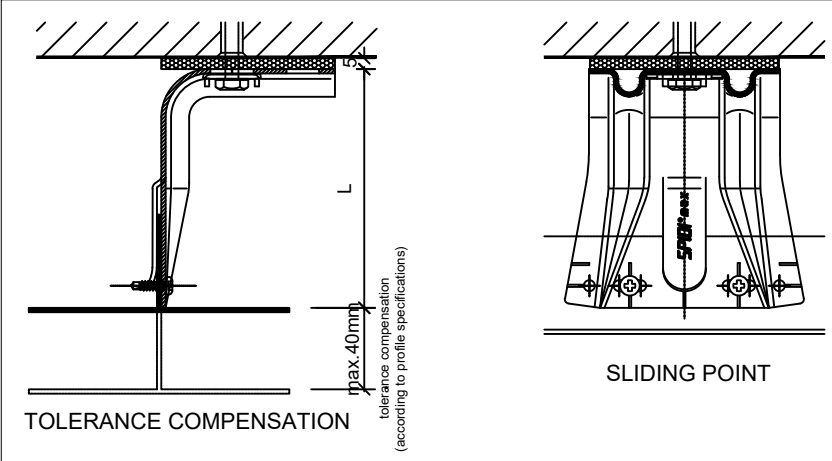
Rev.

01

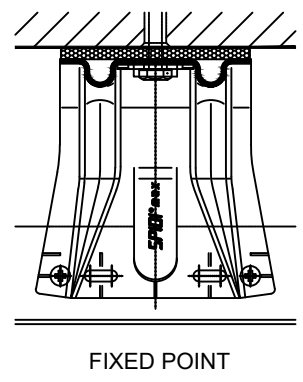
# BRACKET TYPES AVAILABLE FROM ELEMENTAL



## SPIDI MAX BRACKETS LENGTH



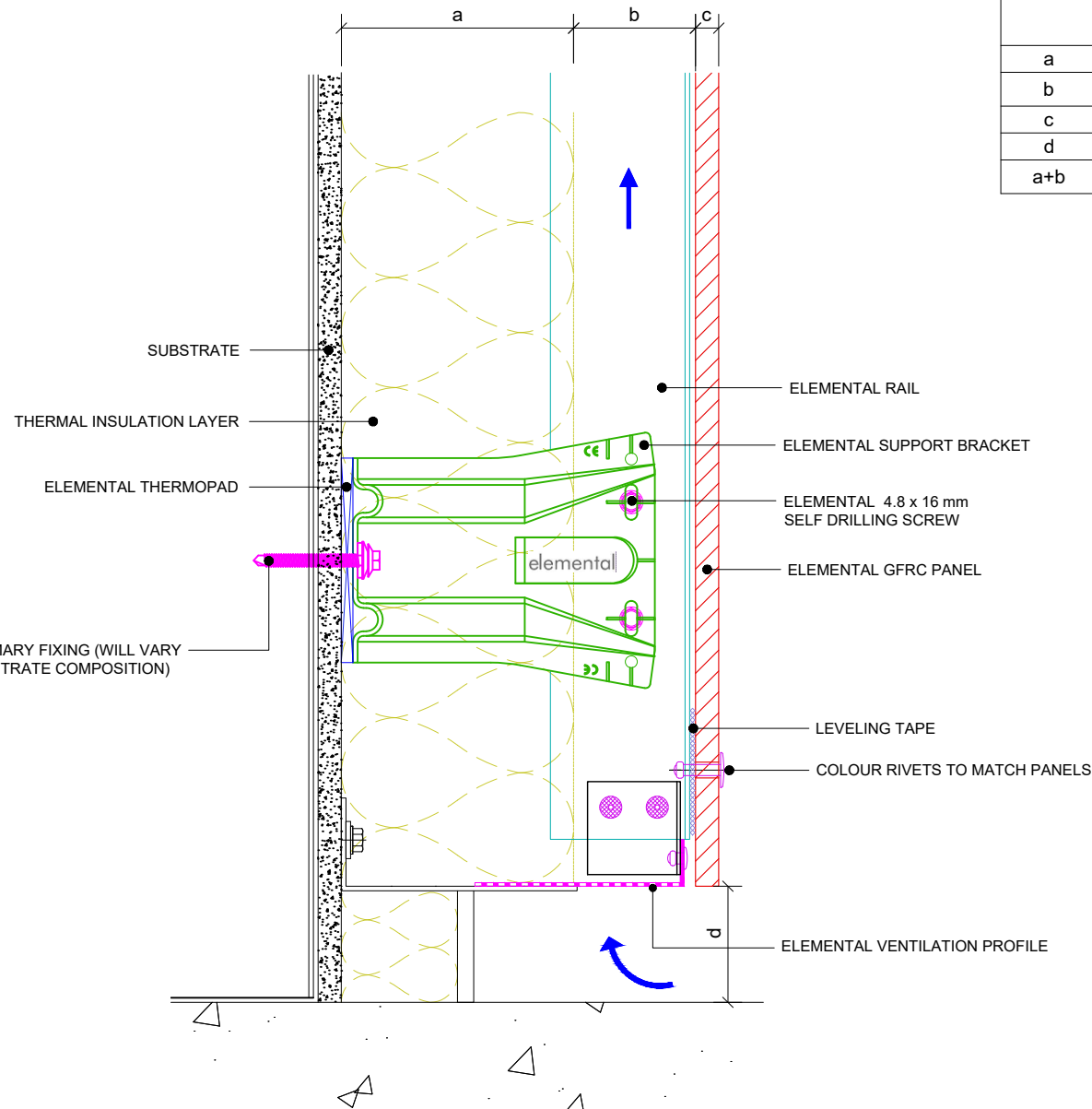
SPIDI-max wall bracket		SPIDI-max wall bracket	
description	length L	description	length L
SPIDI max 65/80	65	SPIDI max 480/80	480
SPIDI max 85/80	85	SPIDI max 510/80	510
SPIDI max 110/80	110	SPIDI max 540/80	540
SPIDI max 135/80	135	SPIDI max 570/80	570
SPIDI max 160/80	160	SPIDI max 600/80	600
SPIDI max 170/80	170	SPIDI max 630/80	630
SPIDI max 185/80	185	SPIDI max 660/80	660
SPIDI max 210/80	210	SPIDI max 690/80	690
SPIDI max 240/80	240	SPIDI max 720/80	720
SPIDI max 270/80	270	SPIDI max 750/80	750
SPIDI max 300/80	300	SPIDI max 780/80	780
SPIDI max 330/80	330	SPIDI max 810/80	810
SPIDI max 360/80	360	SPIDI max 840/80	840
SPIDI max 390/80	390	SPIDI max 870/80	870
SPIDI max 420/80	420	SPIDI max 900/80	900
SPIDI max 450/80	450	special length	on request



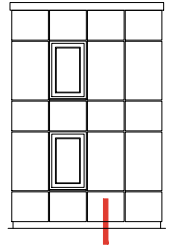
**Elemental Architectural Cladding Specialists**  
 #29 The Cubes Offices, Beacon South Quarter,  
 Sandyford  
 Dublin 18, D18 A264  
 Phone: +353 (0)1 293 8951  
 Email: info@elemental.ie

Drawing Title	BRACKET TYPES AVAILABLE										
Drawing No.	EL-SB-RP02	System:	EL-Rivet GFRG	Size:	A4	Scale:	NTS	Drawn:	V.C.	Rev.	01

These drawings are indicative only, for use as a guide. The customer is always responsible for any specific design, structural calculations and calculating exact sizes & quantities of panels. Any project details and calculations supplied by Elemental Architectural Cladding Specialists are provided in good faith and should always be checked and approved by the project engineer responsible. Elemental Architectural Cladding Specialists will not accept any liability should the system be designed / installed incorrectly.

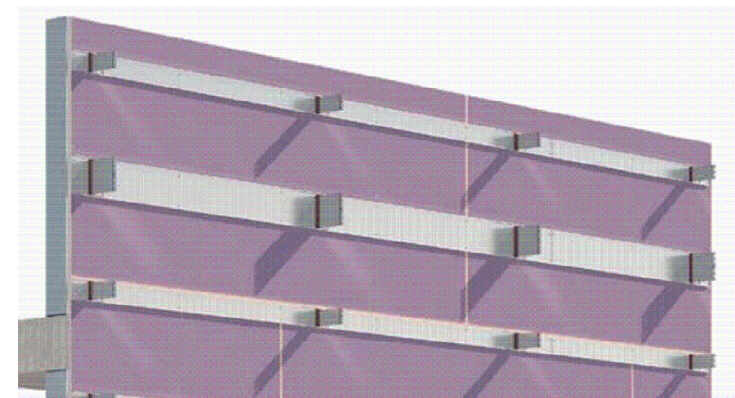
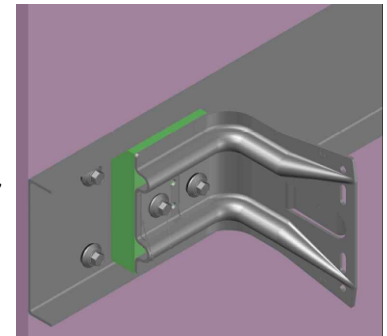


Dimensions	
a	Insulation thickness (varies)
b	Free vertical ventilation gap
c	Panel nominal thickness
d	Base distance - Minimum 50 mm
a+b	Clad Zone



Note:

"In the event that the subframe brackets do not line up with the vertical steel studs a horizontal galvanised stud maybe required"



**Elemental Architectural Cladding Specialists**  
 #29 The Cubes Offices, Beacon South Quarter,  
 Sandyford  
 Dublin 18, D18 A264  
 Phone: +353 (0)1 293 8951  
 Email: info@elemental.ie

Drawing Title

**ELEMENTAL GFRc - RIVET FIX  
 BASE DETAIL**

Drawing No.

**EL-SB-RG03**

System:

**EL-Rivet  
 GFRc**

Size:

**A4**

Scale:

**NTS**

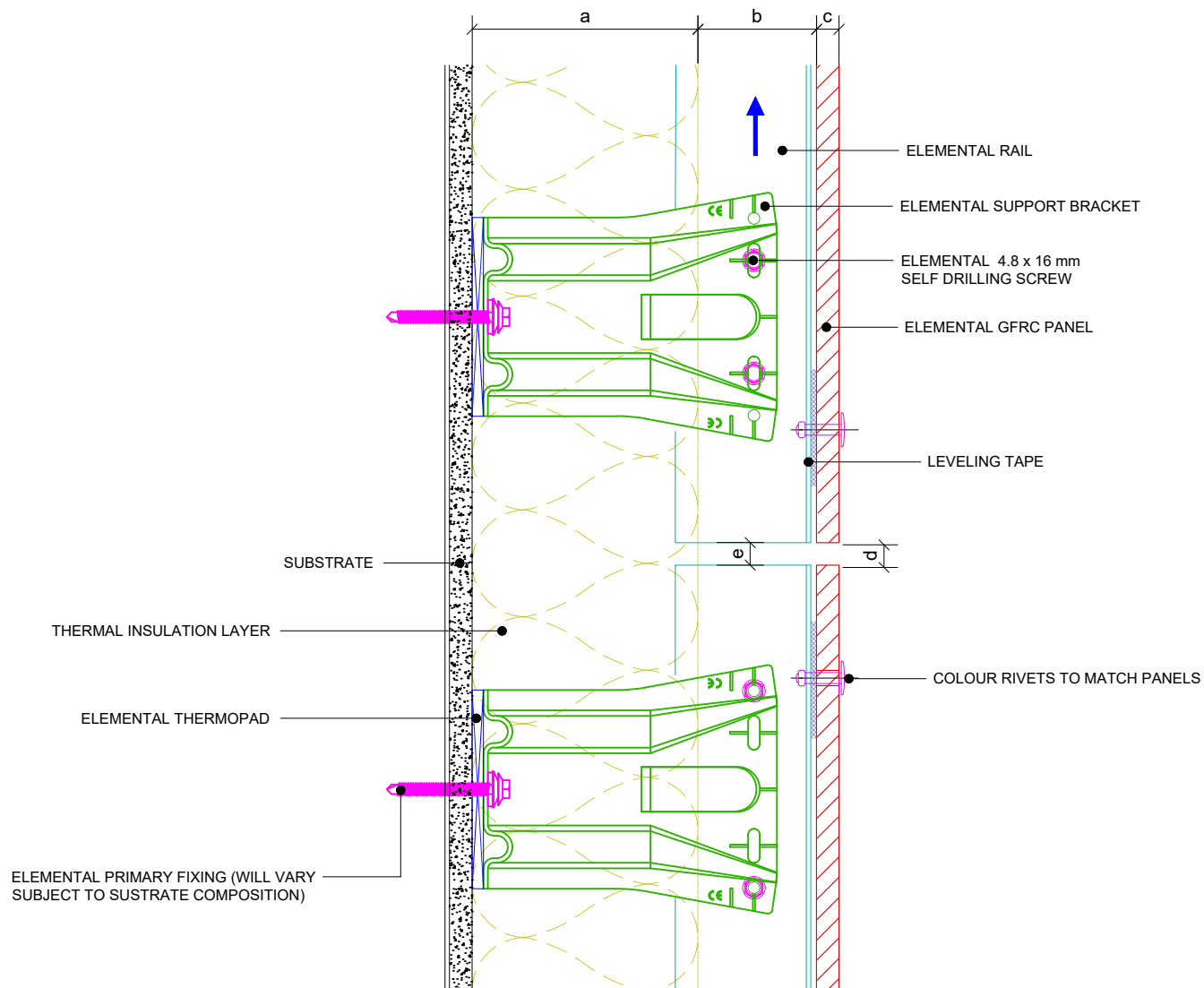
Drawn:

**V.C.**

Rev.

**01**

These drawings are indicative only, for use as a guide. The customer is always responsible for any specific design, structural calculations and calculating exact sizes & quantities of panels. Any project details and calculations supplied by Elemental Architectural Cladding Specialists are provided in good faith and should always be checked and approved by the project engineer responsible. Elemental Architectural Cladding Specialists will not accept any liability should the system be designed / installed incorrectly.



Dimensions	
a	Insulation thickness (varies)
b	Free vertical ventilation gap
c	Panel nominal thickness
d	Panel Joint - 10 mm
e	Rail Joint - Minimum 10 mm
a+b	Clad Zone



**Elemental Architectural Cladding Specialists**  
 #29 The Cubes Offices, Beacon South Quarter,  
 Sandyford  
 Dublin 18, D18 A264  
 Phone: +353 (0)1 293 8951  
 Email: info@elemental.ie

Drawing Title

**ELEMENTAL GFRc - RIVET FIX  
 HORIZONTAL JOINT DETAIL OPEN OPTION**

Drawing No.

**EL-SB-RG04**

System:

**EL-Rivet  
 GFRc**

Size:

**A4**

Scale:

**NTS**

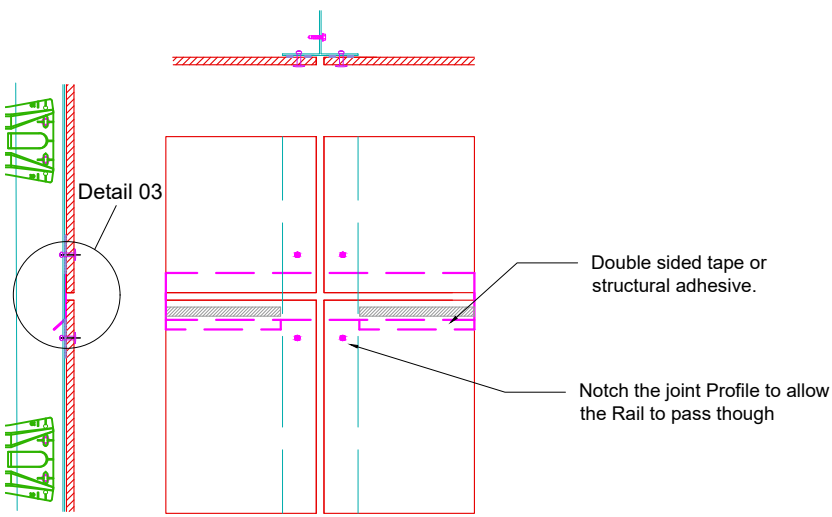
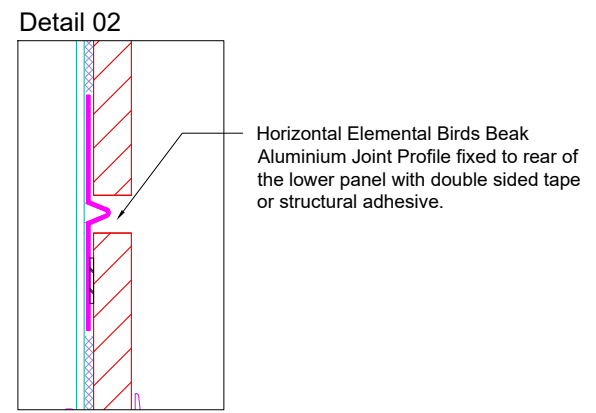
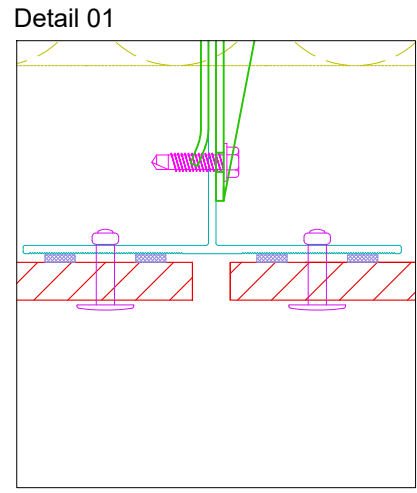
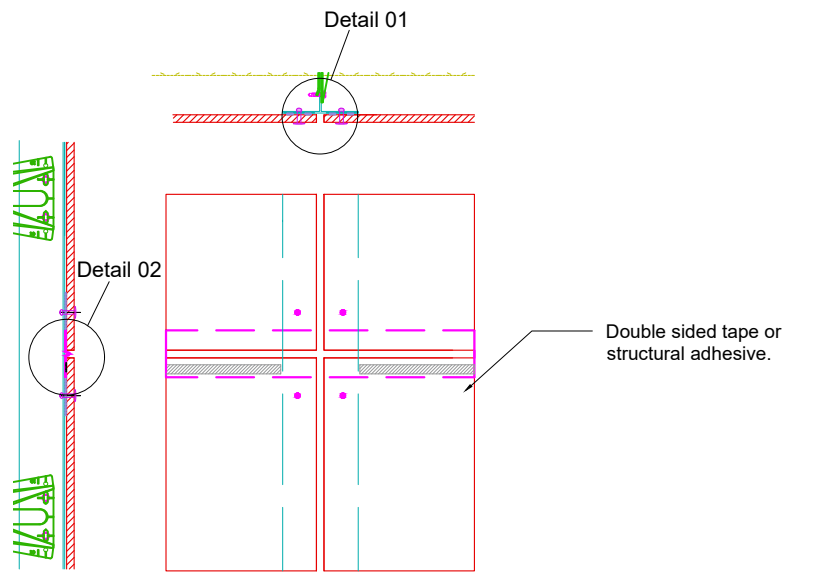
Drawn:

**V.C.**

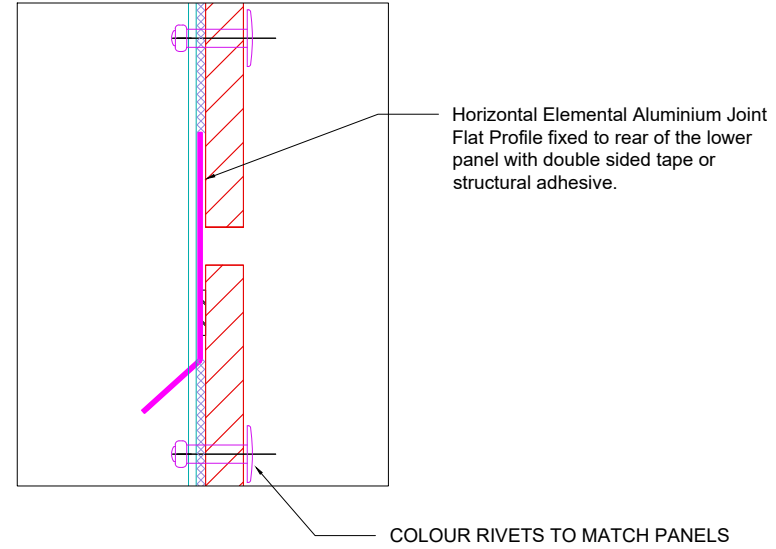
Rev.

**01**

These drawings are indicative only, for use as a guide. The customer is always responsible for any specific design, structural calculations and calculating exact sizes & quantities of panels. Any project details and calculations supplied by Elemental Architectural Cladding Specialists are provided in good faith and should always be checked and approved by the project engineer responsible. Elemental Architectural Cladding Specialists will not accept any liability should the system be designed / installed incorrectly.



Detail 03 (Alternative Profile)

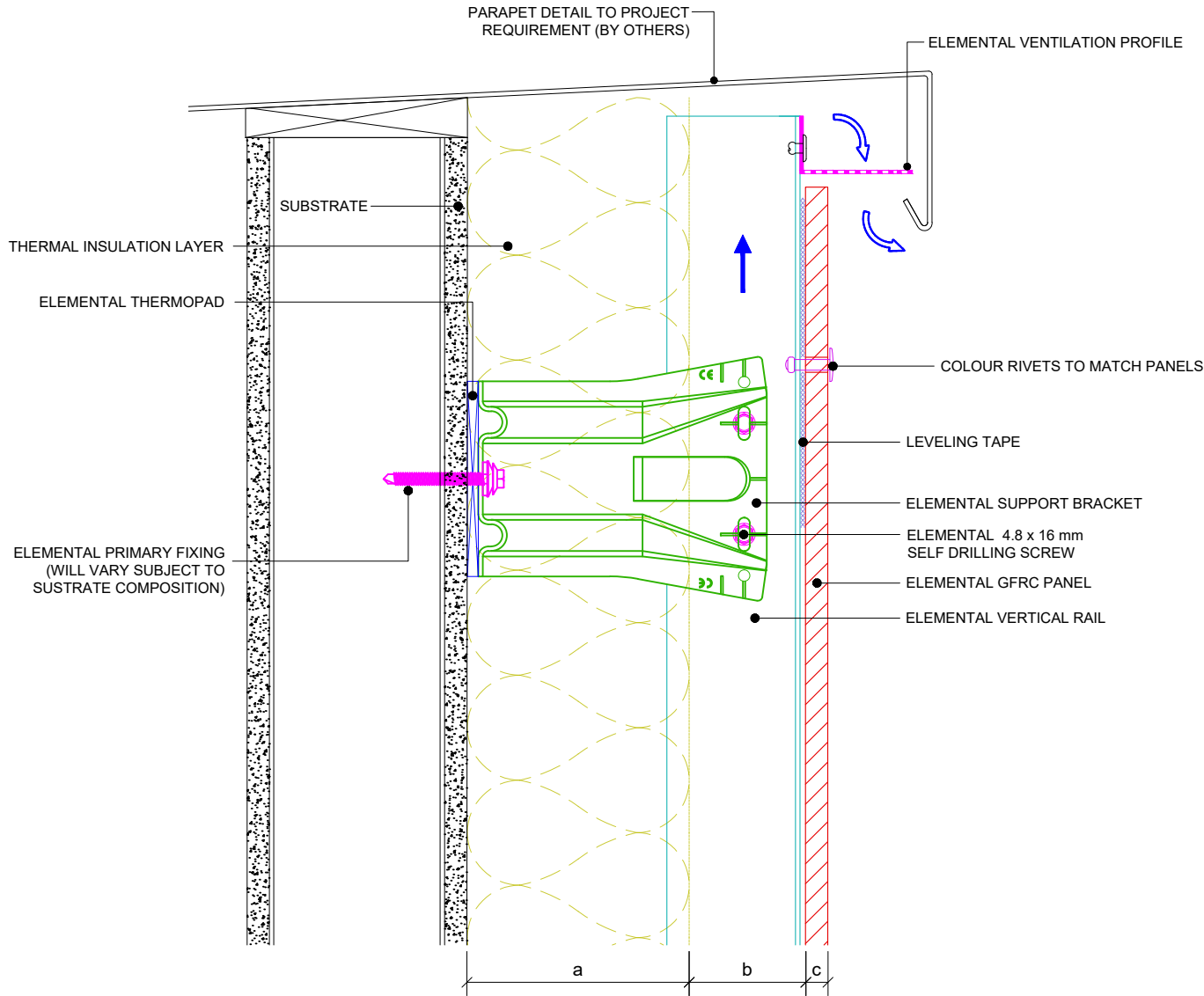


**Elemental Architectural Cladding Specialists**  
 #29 The Cubes Offices, Beacon South Quarter,  
 Sandyford  
 Dublin 18, D18 A264  
 Phone: +353 (0)1 293 8951  
 Email: info@elemental.ie

Drawing Title	ELEMENTAL GFRC - RIVET FIX JOINT PROFILE DETAILS - CLOSED OPTIONS										
Drawing No.	EL-SB-RG05	System:	EL-Rivet GFRC	Size:	A4	Scale:	NTS	Drawn:	V.C.	Rev.	01

Elemental Architectural Cladding Specialists reserve the right to amend details at any time without prior notice. Reproduction or disclosure to third parties is strictly prohibited and can only be attained through signed, written consent from Elemental ACS.

These drawings are indicative only, for use as a guide. The customer is always responsible for any specific design, structural calculations and calculating exact sizes & quantities of panels. Any project details and calculations supplied by Elemental Architectural Cladding Specialists are provided in good faith and should always be checked and approved by the project engineer responsible. Elemental Architectural Cladding Specialists will not accept any liability should the system be designed / installed incorrectly.



Dimensions	
a	Insulation thickness (varies)
b	Free vertical ventilation gap
c	Panel nominal thickness
a+b	Clad Zone



**Elemental Architectural Cladding Specialists**  
 #29 The Cubes Offices, Beacon South Quarter,  
 Sandyford  
 Dublin 18, D18 A264  
 Phone: +353 (0)1 293 8951  
 Email: info@elemental.ie

Drawing Title

**ELEMENTAL GFRc - RIVET FIX  
 GENERIC PARAPET DETAIL**

Drawing No.

**EL-SB-RG06**

System:

**EL-Rivet  
 GFRc**

Size:

**A4**

Scale:

**NTS**

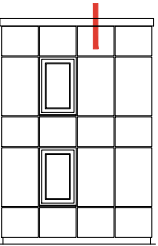
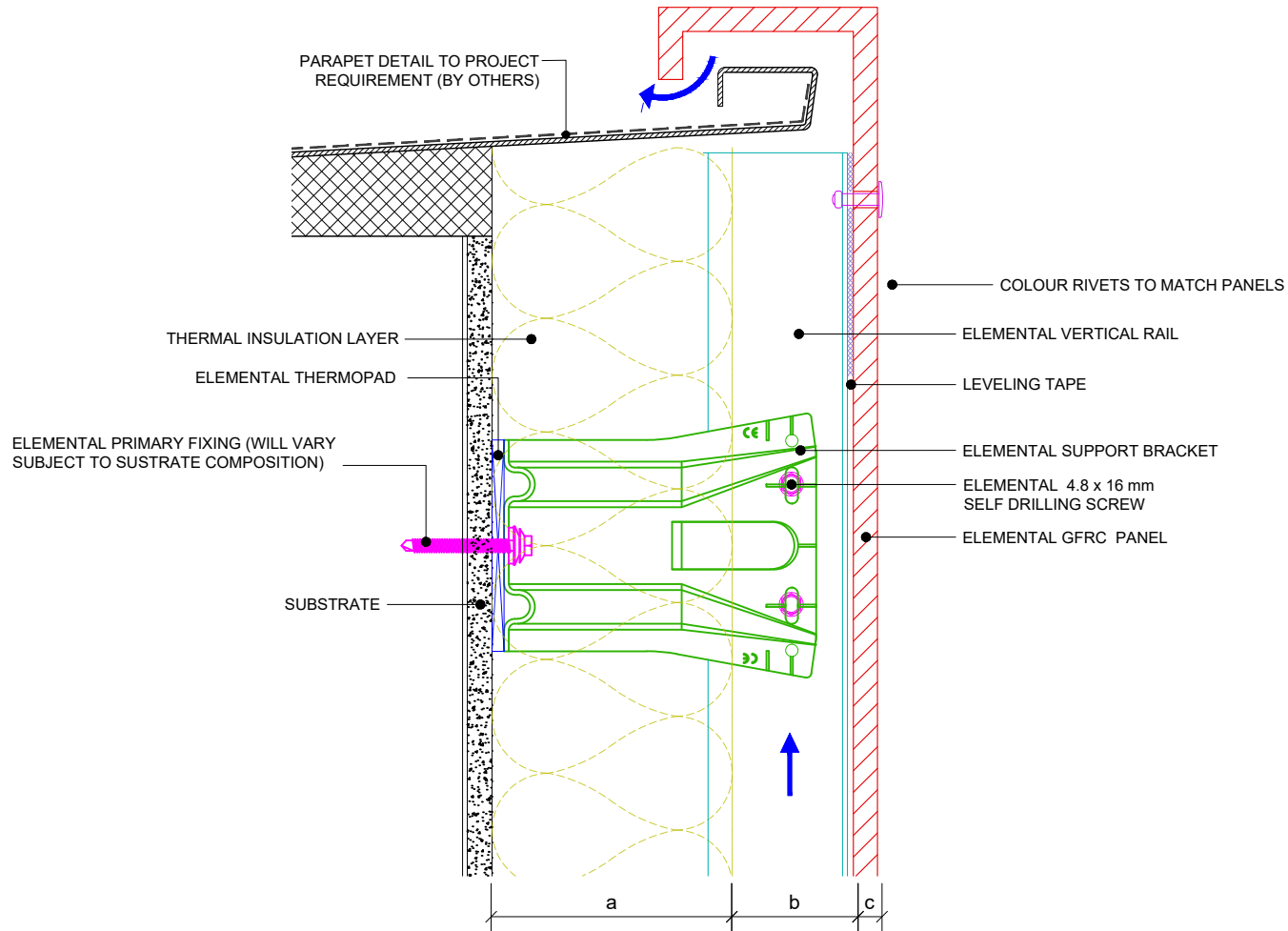
Drawn:

**V.C.**

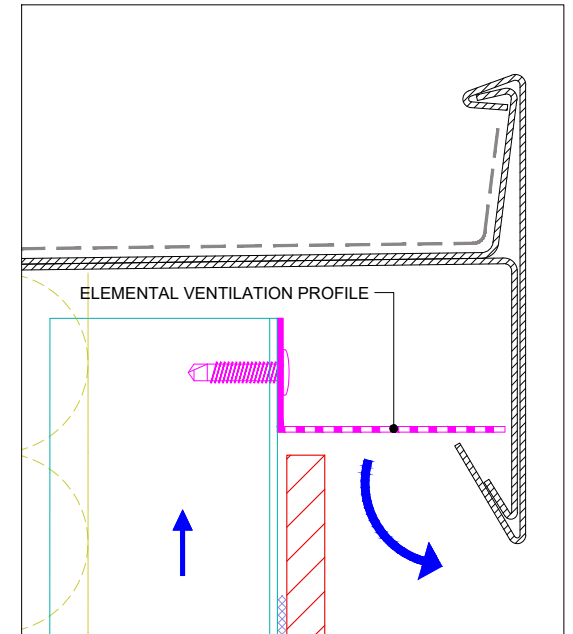
Rev.

**01**

These drawings are indicative only, for use as a guide. The customer is always responsible for any specific design, structural calculations and calculating exact sizes & quantities of panels. Any project details and calculations supplied by Elemental Architectural Cladding Specialists are provided in good faith and should always be checked and approved by the project engineer responsible. Elemental Architectural Cladding Specialists will not accept any liability should the system be designed / installed incorrectly.



PARAPET OPTION



Dimensions	
a	Insulation thickness (varies)
b	Free vertical ventilation gap
c	Panel nominal thickness
a+b	Clad Zone



**Elemental Architectural Cladding Specialists**  
 #29 The Cubes Offices, Beacon South Quarter,  
 Sandyford  
 Dublin 18, D18 A264  
 Phone: +353 (0)1 293 8951  
 Email: info@elemental.ie

Drawing Title

**ELEMENTAL GFR - RIVET FIX  
 PARAPET DETAILS OPTIONS**

Drawing No.

**EL-SB-RG07**

System:

**EL-Rivet  
 GFR**

Size:

**A4**

Scale:

**NTS**

Drawn:

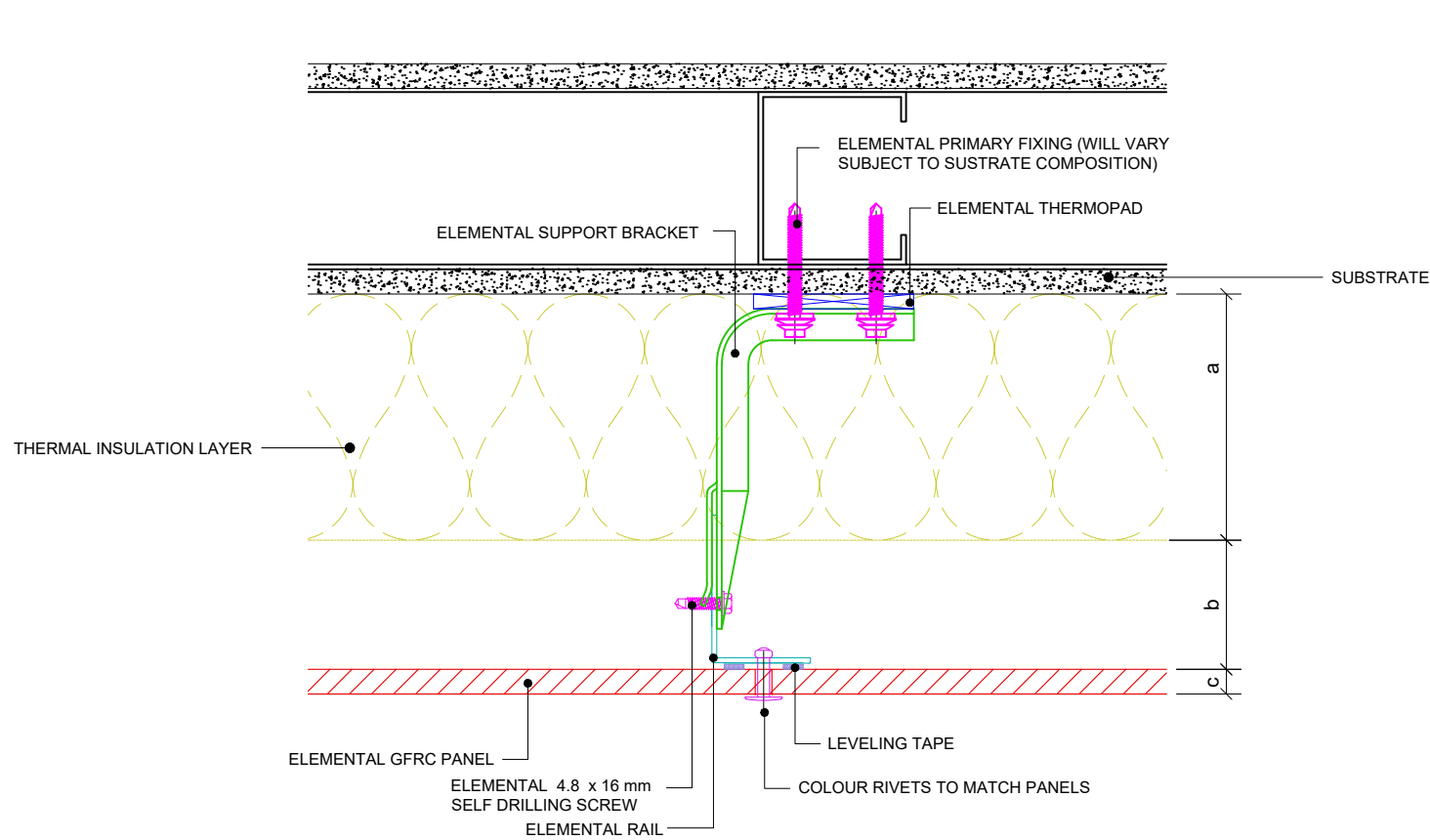
**V.C.**

Rev.

**01**



These drawings are indicative only, for use as a guide. The customer is always responsible for any specific design, structural calculations and calculating exact sizes & quantities of panels. Any project details and calculations supplied by Elemental Architectural Cladding Specialists are provided in good faith and should always be checked and approved by the project engineer responsible. Elemental Architectural Cladding Specialists will not accept any liability should the system be designed / installed incorrectly.



Dimensions	
a	Insulation thickness (varies)
b	Free vertical ventilation gap
c	Panel nominal thickness
a+b	Clad Zone



**Elemental Architectural Cladding Specialists**  
 #29 The Cubes Offices, Beacon South Quarter,  
 Sandyford  
 Dublin 18, D18 A264  
 Phone: +353 (0)1 293 8951  
 Email: info@elemental.ie

Drawing Title

**ELEMENTAL GFRc - RIVET FIX  
 INTERMEDIATE PANEL SUPPORT DETAIL**

Drawing No.

**EL-SB-RG08**

System:

**EL-Rivet  
 GFRc**

Size:

**A4**

Scale:

**NTS**

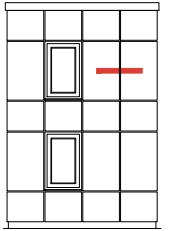
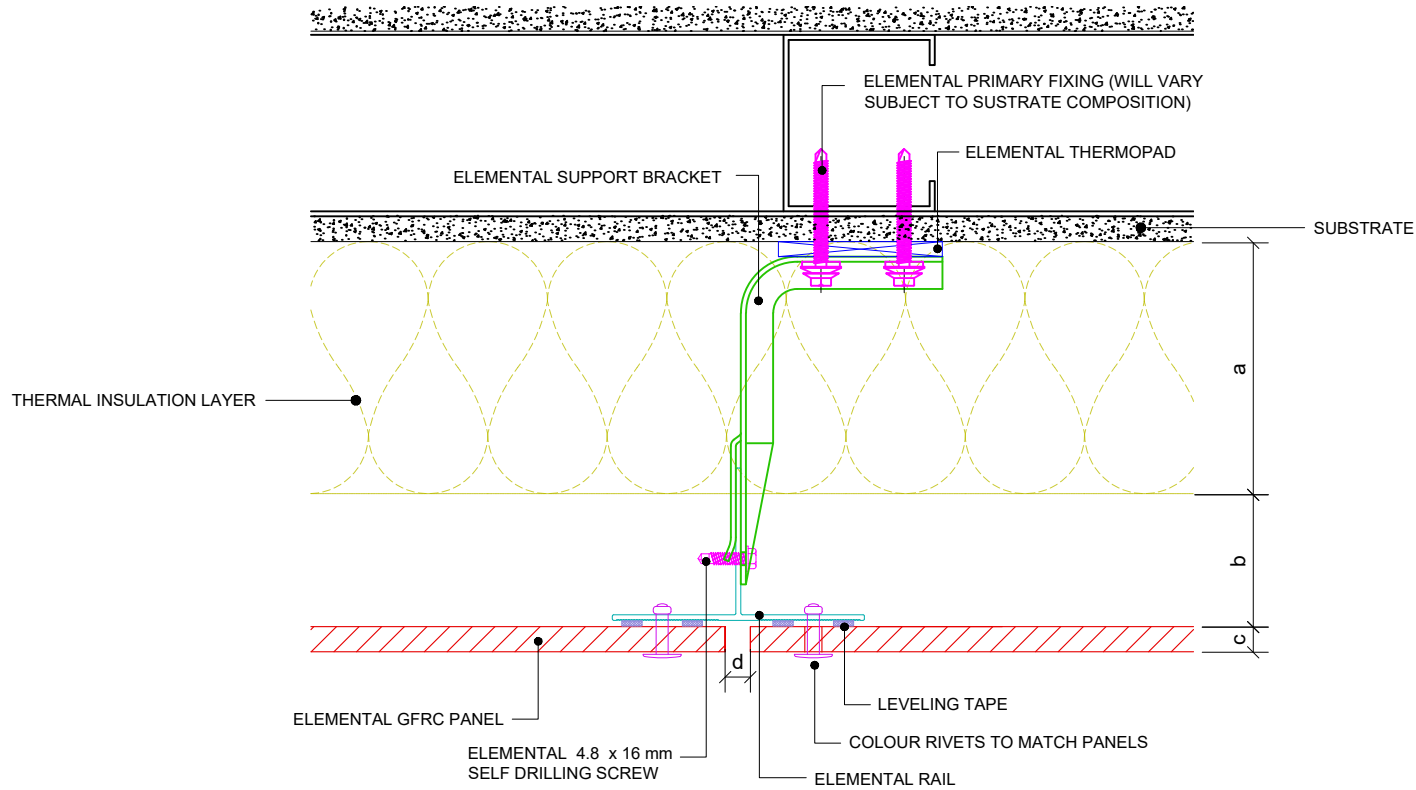
Drawn:

**V.C.**

Rev.

**01**

These drawings are indicative only, for use as a guide. The customer is always responsible for any specific design, structural calculations and calculating exact sizes & quantities of panels. Any project details and calculations supplied by Elemental Architectural Cladding Specialists are provided in good faith and should always be checked and approved by the project engineer responsible. Elemental Architectural Cladding Specialists will not accept any liability should the system be designed / installed incorrectly.



Dimensions	
a	Insulation thickness (varies)
b	Free vertical ventilation gap
c	Panel nominal thickness
d	Panel joint - 10 mm
a+b	Clad Zone



**Elemental Architectural Cladding Specialists**  
 #29 The Cubes Offices, Beacon South Quarter,  
 Sandyford  
 Dublin 18, D18 A264  
 Phone: +353 (0)1 293 8951  
 Email: info@elemental.ie

Drawing Title

**ELEMENTAL GFRc - RIVET FIX  
 RAIL SUPPORT AND VERTICAL JOINT DETAIL**

Drawing No.

**EL-SB-RG09**

System:

**EL-Rivet  
 GFRc**

Size:

**A4**

Scale:

**NTS**

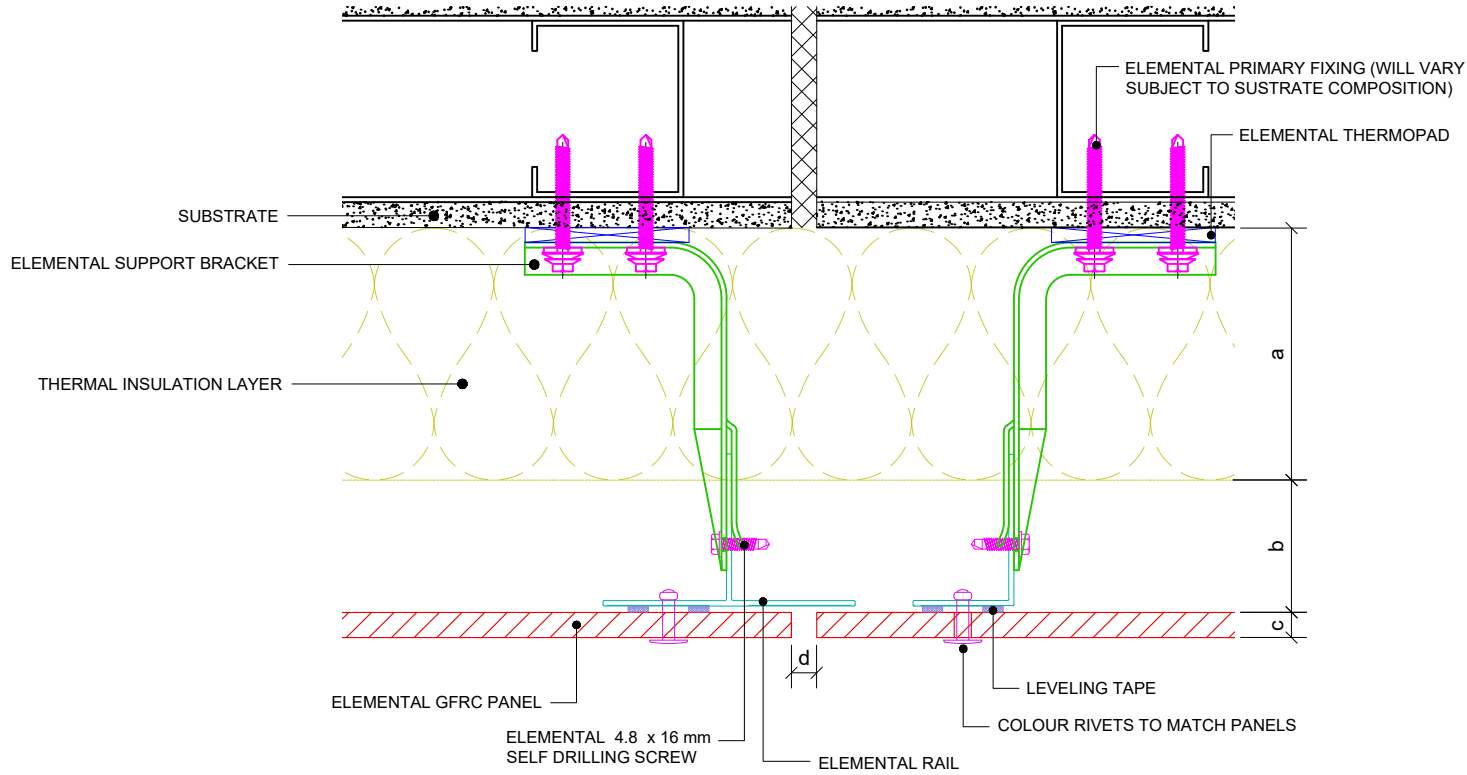
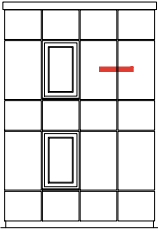
Drawn:

**V.C.**

Rev.

**01**

These drawings are indicative only, for use as a guide. The customer is always responsible for any specific design, structural calculations and calculating exact sizes & quantities of panels. Any project details and calculations supplied by Elemental Architectural Cladding Specialists are provided in good faith and should always be checked and approved by the project engineer responsible. Elemental Architectural Cladding Specialists will not accept any liability should the system be designed / installed incorrectly.



Dimensions	
a	Insulation thickness (varies)
b	Free vertical ventilation gap
c	Panel nominal thickness
d	Panel joint - 10 mm
a+b	Clad Zone

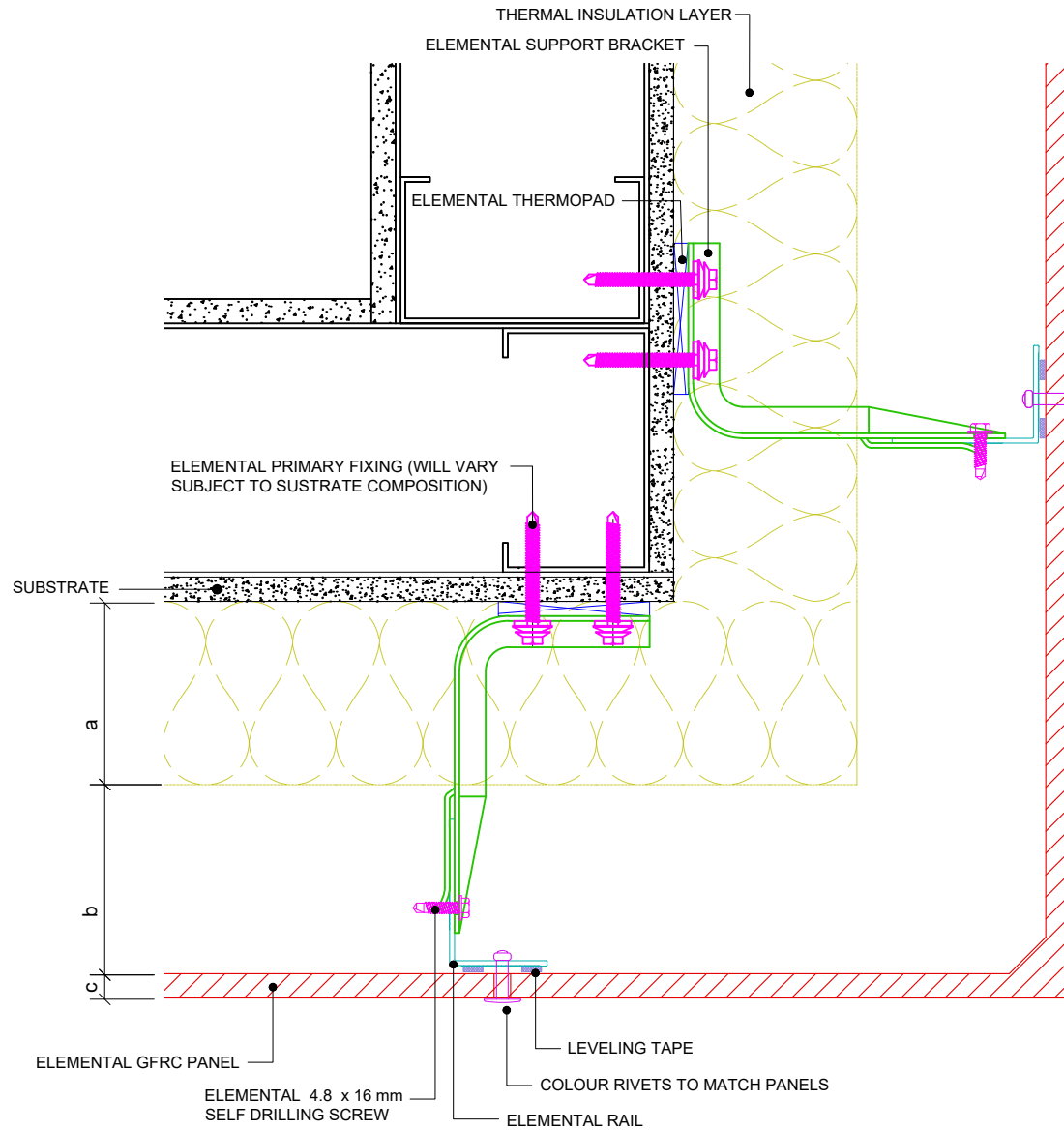


**Elemental Architectural Cladding Specialists**  
 #29 The Cubes Offices, Beacon South Quarter,  
 Sandyford  
 Dublin 18, D18 A264  
 Phone: +353 (0)1 293 8951  
 Email: info@elemental.ie

Drawing Title	ELEMENTAL GFRG - RIVET FIX BUILDING STRUCTURAL MOVEMENT JOINT										
Drawing No.	EL-SB-RG10	System:	EL-Rivet GFRG	Size:	A4	Scale:	NTS	Drawn:	V.C.	Rev.	01

Elemental Architectural Cladding Specialists reserve the right to amend details at any time without prior notice. Reproduction or disclosure to third parties is strictly prohibited and can only be attained through signed, written consent from Elemental ACS.

These drawings are indicative only, for use as a guide. The customer is always responsible for any specific design, structural calculations and calculating exact sizes & quantities of panels. Any project details and calculations supplied by Elemental Architectural Cladding Specialists are provided in good faith and should always be checked and approved by the project engineer responsible. Elemental Architectural Cladding Specialists will not accept any liability should the system be designed / installed incorrectly.



Dimensions	
a	Insulation thickness (varies)
b	Free vertical ventilation gap
c	Panel nominal thickness
a+b	Clad Zone



**Elemental Architectural Cladding Specialists**  
 #29 The Cubes Offices, Beacon South Quarter,  
 Sandyford  
 Dublin 18, D18 A264  
 Phone: +353 (0)1 293 8951  
 Email: info@elemental.ie

Drawing Title

**ELEMENTAL GFRc - RIVET FIX  
 EXTERNAL CORNER - CONTINUOUS PANEL**

Drawing No.

**EL-SB-RG11**

System:

**EL-Rivet  
 GFRc**

Size:

**A4**

Scale:

**NTS**

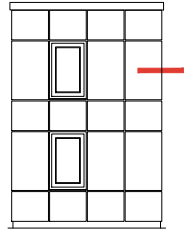
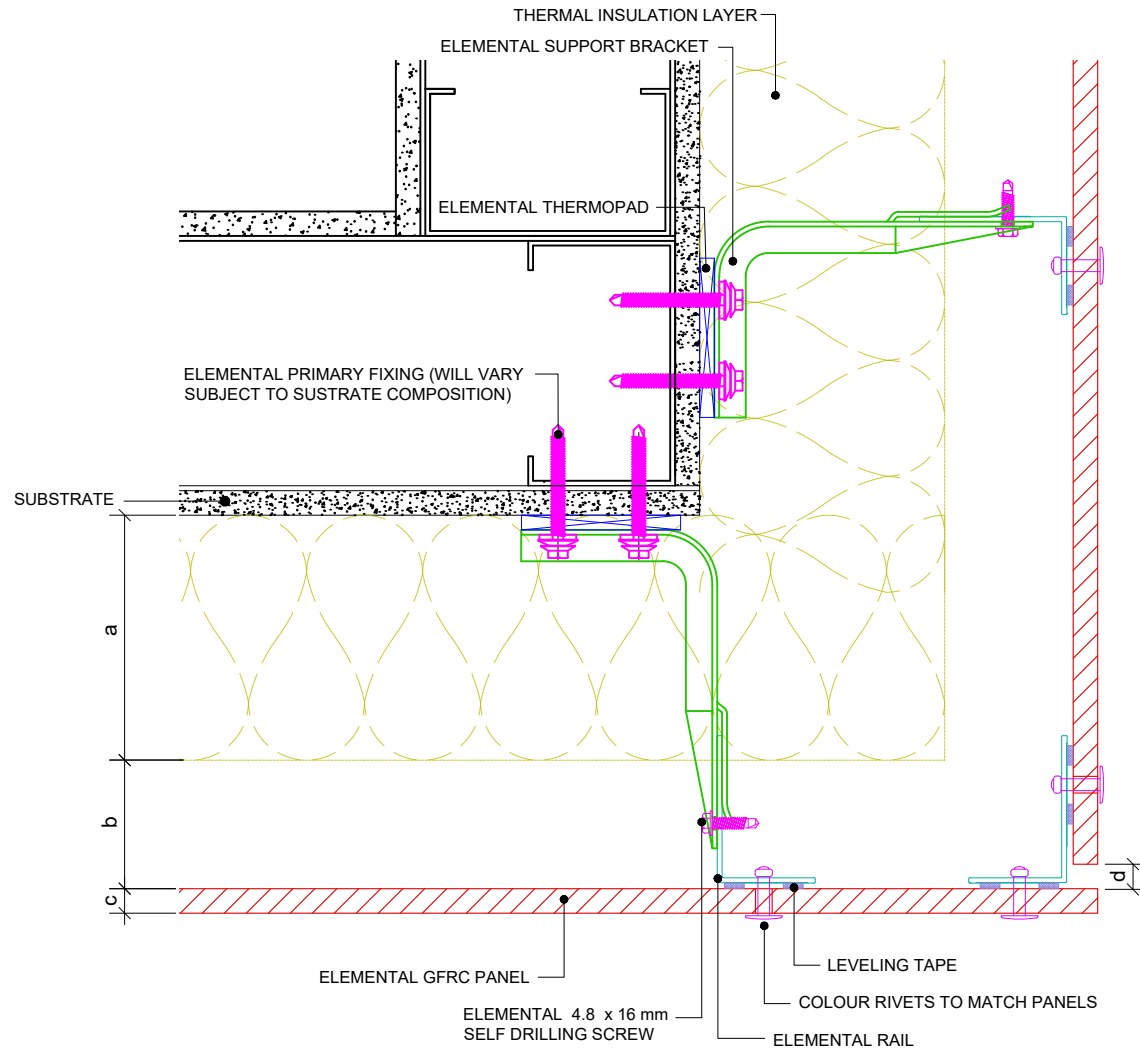
Drawn:

**V.C.**

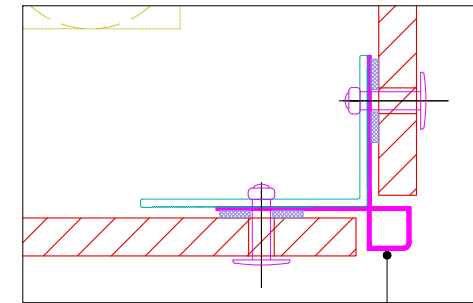
Rev.

**01**

These drawings are indicative only, for use as a guide. The customer is always responsible for any specific design, structural calculations and calculating exact sizes & quantities of panels. Any project details and calculations supplied by Elemental Architectural Cladding Specialists are provided in good faith and should always be checked and approved by the project engineer responsible. Elemental Architectural Cladding Specialists will not accept any liability should the system be designed / installed incorrectly.



EXTERNAL CORNER-PROFILE OPTION



ELEMENTAL EXTERNAL CORNER PROFILE

### Dimensions

a	Insulation thickness (varies)
b	Free vertical ventilation gap
c	Panel nominal thickness
d	Panel joint - 10 mm
a+b	Clad Zone



**Elemental Architectural Cladding Specialists**  
 #29 The Cubes Offices, Beacon South Quarter,  
 Sandyford  
 Dublin 18, D18 A264  
 Phone: +353 (0)1 293 8951  
 Email: info@elemental.ie

Drawing Title

**ELEMENTAL GFRc - RIVET FIX  
 EXTERNAL CORNER - CLOSED JOINT OPTIONS**

Drawing No.

**EL-SB-RG12**

System:

**EL-Rivet  
 GFRc**

Size:

**A4**

Scale:

**NTS**

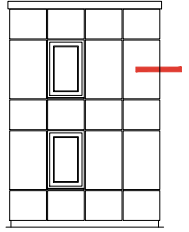
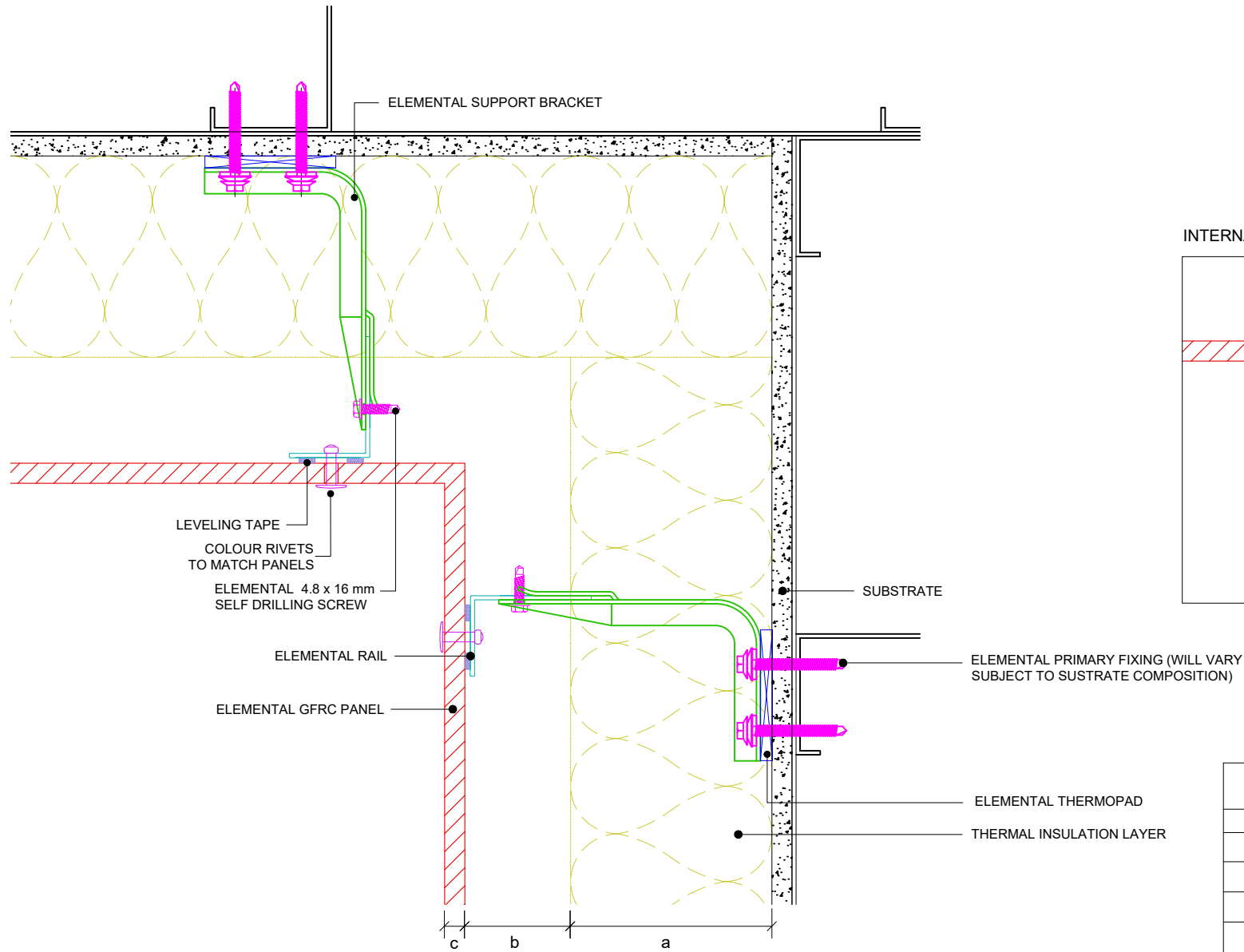
Drawn:

**V.C.**

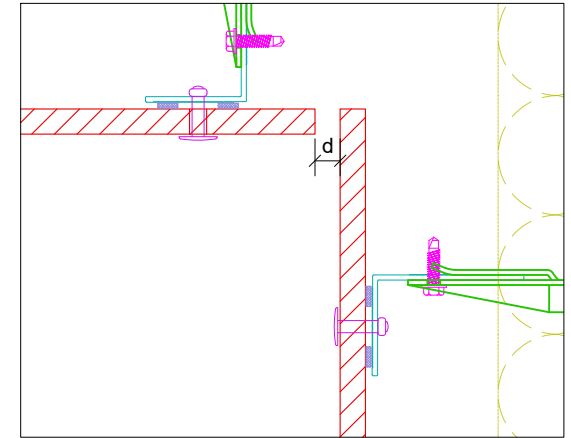
Rev.

**01**

These drawings are indicative only, for use as a guide. The customer is always responsible for any specific design, structural calculations and calculating exact sizes & quantities of panels. Any project details and calculations supplied by Elemental Architectural Cladding Specialists are provided in good faith and should always be checked and approved by the project engineer responsible. Elemental Architectural Cladding Specialists will not accept any liability should the system be designed / installed incorrectly.



INTERNAL CORNER - OPEN JOINT OPTION



Dimensions	
a	Insulation thickness (varies)
b	Free vertical ventilation gap
c	Panel nominal thickness
d	Panel joint - 10 mm
a+b	Clad Zone



**Elemental Architectural Cladding Specialists**  
 #29 The Cubes Offices, Beacon South Quarter,  
 Sandyford  
 Dublin 18, D18 A264  
 Phone: +353 (0)1 293 8951  
 Email: info@elemental.ie

Drawing Title

**ELEMENTAL GFRc - RIVET FIX  
 INTERNAL CORNER OPTIONS**

Drawing No.

EL-SB-RG13

System:

**EL-Rivet  
 GFRc**

Size:

**A4**

Scale:

**NTS**

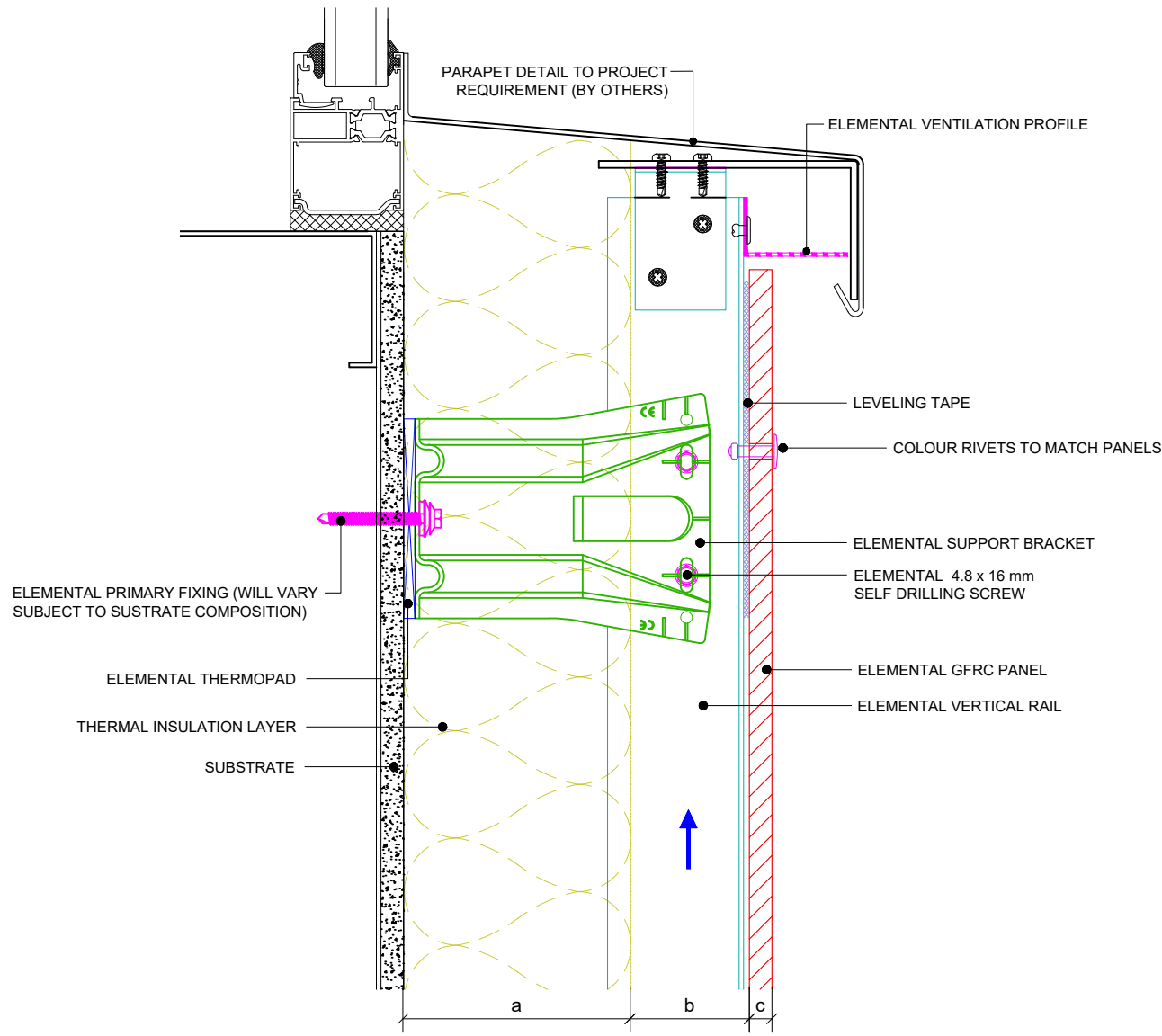
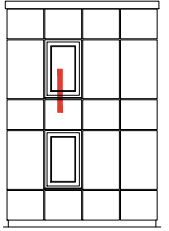
Drawn:

**V.C.**

Rev.

**01**

These drawings are indicative only, for use as a guide. The customer is always responsible for any specific design, structural calculations and calculating exact sizes & quantities of panels. Any project details and calculations supplied by Elemental Architectural Cladding Specialists are provided in good faith and should always be checked and approved by the project engineer responsible. Elemental Architectural Cladding Specialists will not accept any liability should the system be designed / installed incorrectly.



Dimensions	
a	Insulation thickness (varies)
b	Free vertical ventilation gap
c	Panel nominal thickness
a+b	Clad Zone

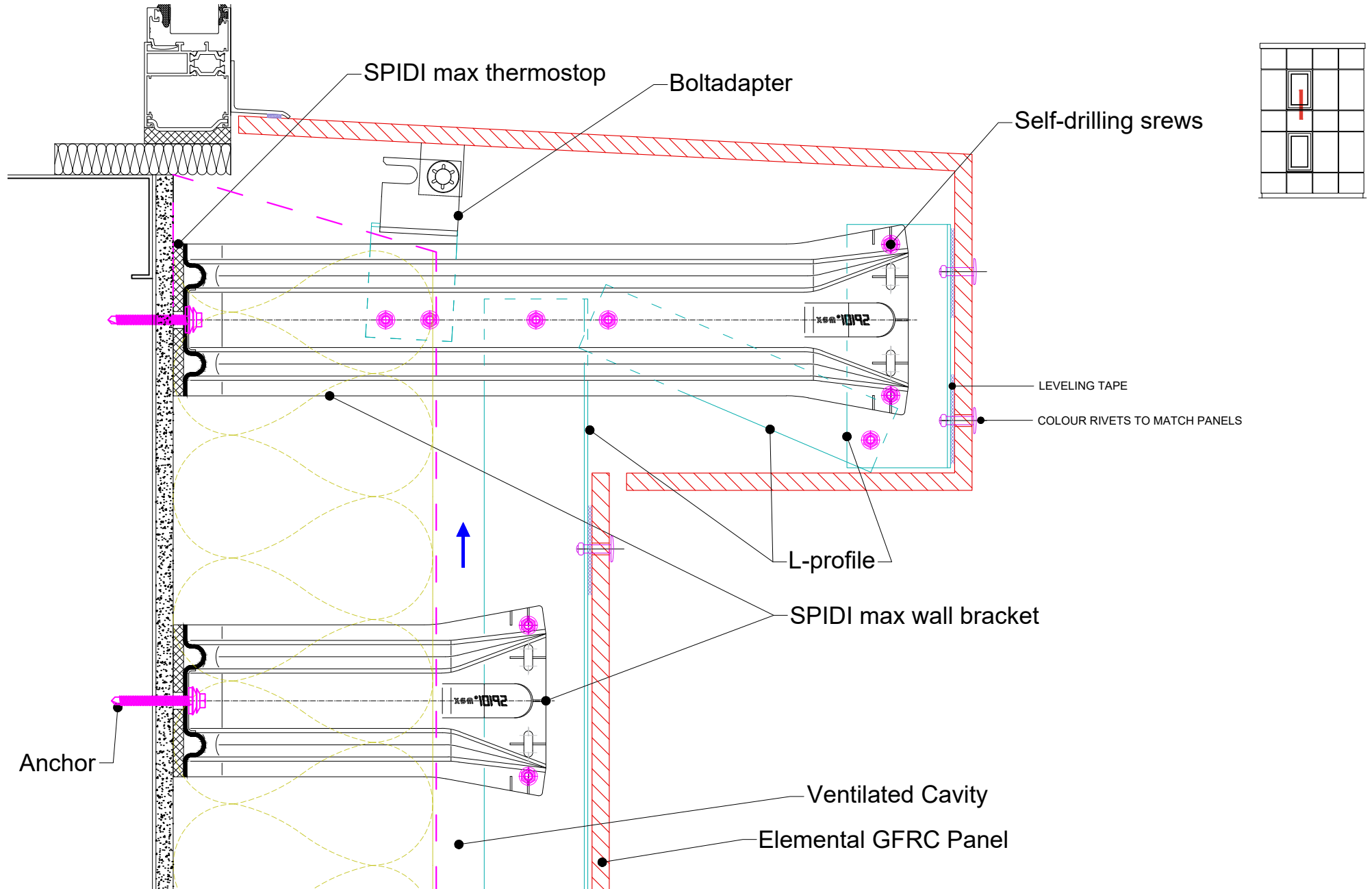


**Elemental Architectural Cladding Specialists**  
 #29 The Cubes Offices, Beacon South Quarter,  
 Sandyford  
 Dublin 18, D18 A264  
 Phone: +353 (0)1 293 8951  
 Email: info@elemental.ie

Drawing Title	ELEMENTAL GFRc - RIVET FIX GENERIC WINDOW CILL DETAIL										
Drawing No.	EL-SB-RG14	System:	EL-Rivet GFRc	Size:	A4	Scale:	NTS	Drawn:	V.C.	Rev.	01

Elemental Architectural Cladding Specialists reserve the right to amend details at any time without prior notice. Reproduction or disclosure to third parties is strictly prohibited and can only be attained through signed, written consent from Elemental ACS.

These drawings are indicative only, for use as a guide. The customer is always responsible for any specific design, structural calculations and calculating exact sizes & quantities of panels. Any project details and calculations supplied by Elemental Architectural Cladding Specialists are provided in good faith and should always be checked and approved by the project engineer responsible. Elemental Architectural Cladding Specialists will not accept any liability should the system be designed / installed incorrectly.



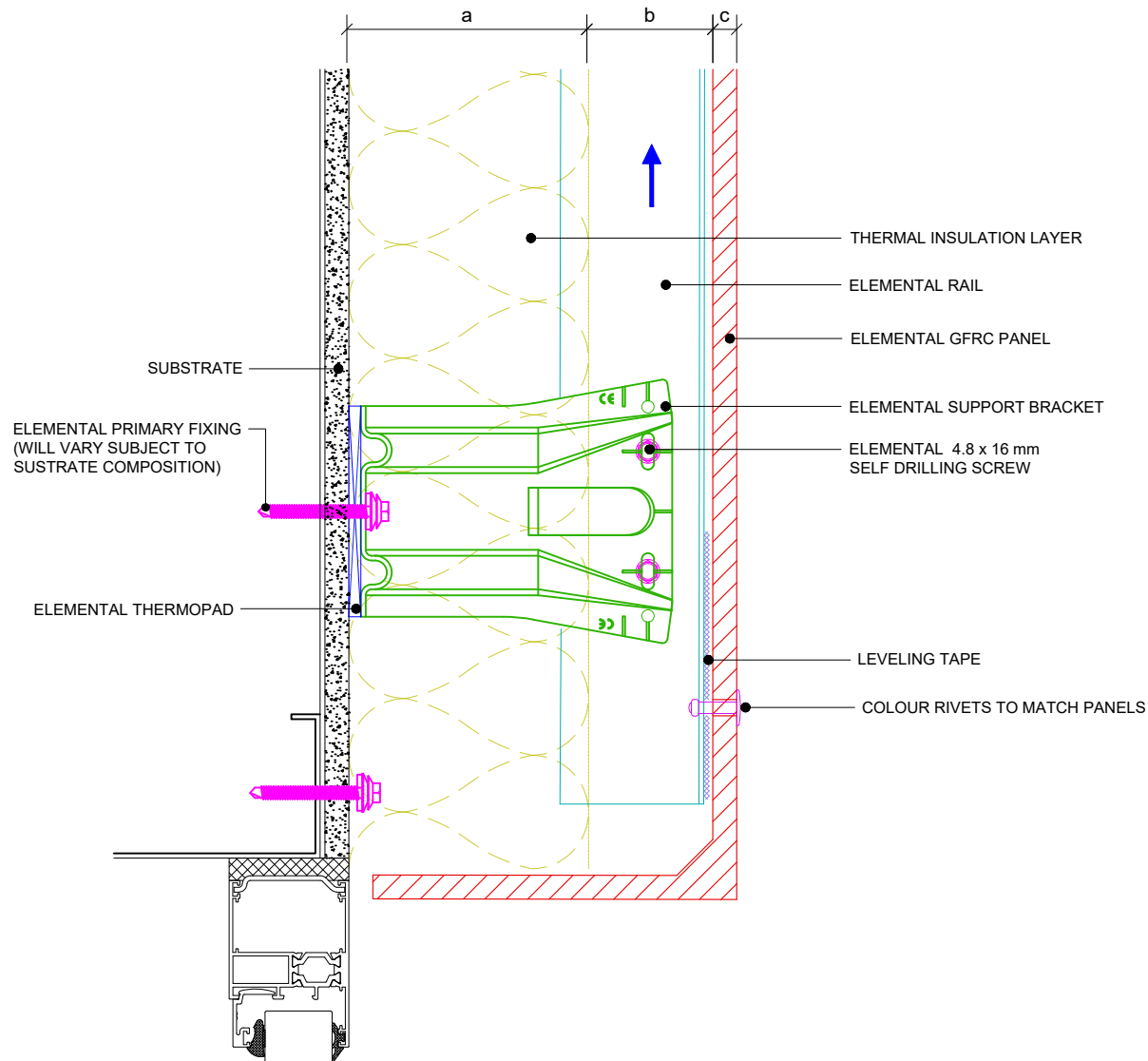
**Elemental Architectural Cladding Specialists**  
 #29 The Cubes Offices, Beacon South Quarter,  
 Sandyford  
 Dublin 18, D18 A264  
 Phone: +353 (0)1 293 8951  
 Email: info@elemental.ie

Drawing Title	ELEMENTAL GFR - RIVET FIX GENERIC WINDOW CILL DETAIL-COMPLETE PIECE OPTION										
Drawing No.	EL-SB-RG15	System:	EL-Rivet GFR	Size:	A4	Scale:	NTS	Drawn:	V.C.	Rev.	01

Elemental Architectural Cladding Specialists reserve the right to amend details at any time without prior notice. Reproduction or disclosure to third parties is strictly prohibited and can only be attained through signed, written consent from Elemental ACS.



These drawings are indicative only, for use as a guide. The customer is always responsible for any specific design, structural calculations and calculating exact sizes & quantities of panels. Any project details and calculations supplied by Elemental Architectural Cladding Specialists are provided in good faith and should always be checked and approved by the project engineer responsible. Elemental Architectural Cladding Specialists will not accept any liability should the system be designed / installed incorrectly.



Dimensions	
a	Insulation thickness (varies)
b	Free vertical ventilation gap
c	Panel nominal thickness
a+b	Clad Zone



**Elemental Architectural Cladding Specialists**  
 #29 The Cubes Offices, Beacon South Quarter,  
 Sandyford  
 Dublin 18, D18 A264  
 Phone: +353 (0)1 293 8951  
 Email: info@elemental.ie

Drawing Title

**ELEMENTAL GFRc - RIVET FIX  
 WINDOW HEAD DETAIL - OPEN JOINT OPTION**

Drawing No.

EL-SB-RG16

System:

**EL-Rivet  
 GFRc**

Size:

**A4**

Scale:

**NTS**

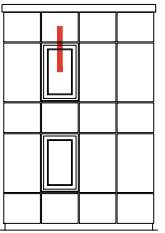
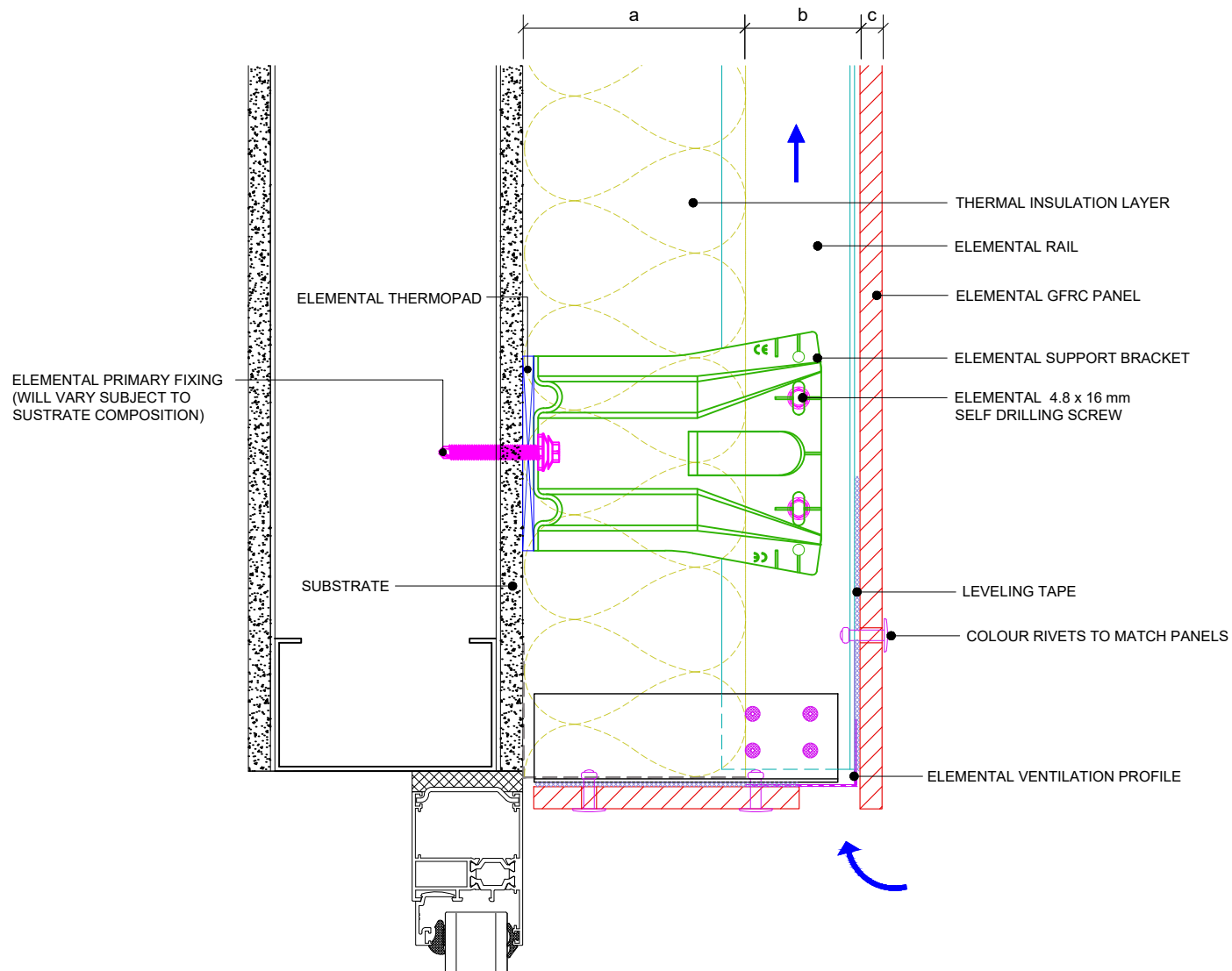
Drawn:

**V.C.**

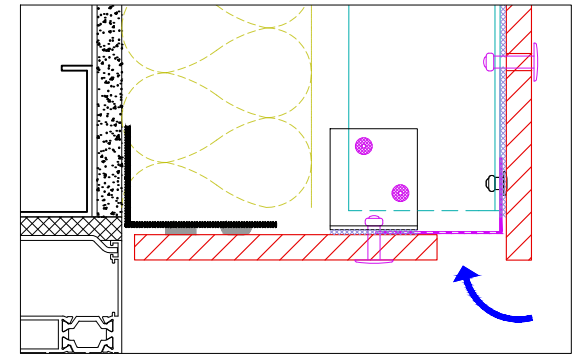
Rev.

**01**

These drawings are indicative only, for use as a guide. The customer is always responsible for any specific design, structural calculations and calculating exact sizes & quantities of panels. Any project details and calculations supplied by Elemental Architectural Cladding Specialists are provided in good faith and should always be checked and approved by the project engineer responsible. Elemental Architectural Cladding Specialists will not accept any liability should the system be designed / installed incorrectly.



WINDOW HEAD OPTION



Dimensions	
a	Insulation thickness (varies)
b	Free vertical ventilation gap
c	Panel nominal thickness
a+b	Clad Zone



**Elemental Architectural Cladding Specialists**  
 #29 The Cubes Offices, Beacon South Quarter,  
 Sandyford  
 Dublin 18, D18 A264  
 Phone: +353 (0)1 293 8951  
 Email: info@elemental.ie

Drawing Title

**ELEMENTAL GFRc - RIVET FIX  
 WINDOW HEAD DETAIL - OPTIONS**

Drawing No.

EL-SB-RG18

System:

**EL-Rivet  
 GFRc**

Size:

**A4**

Scale:

**NTS**

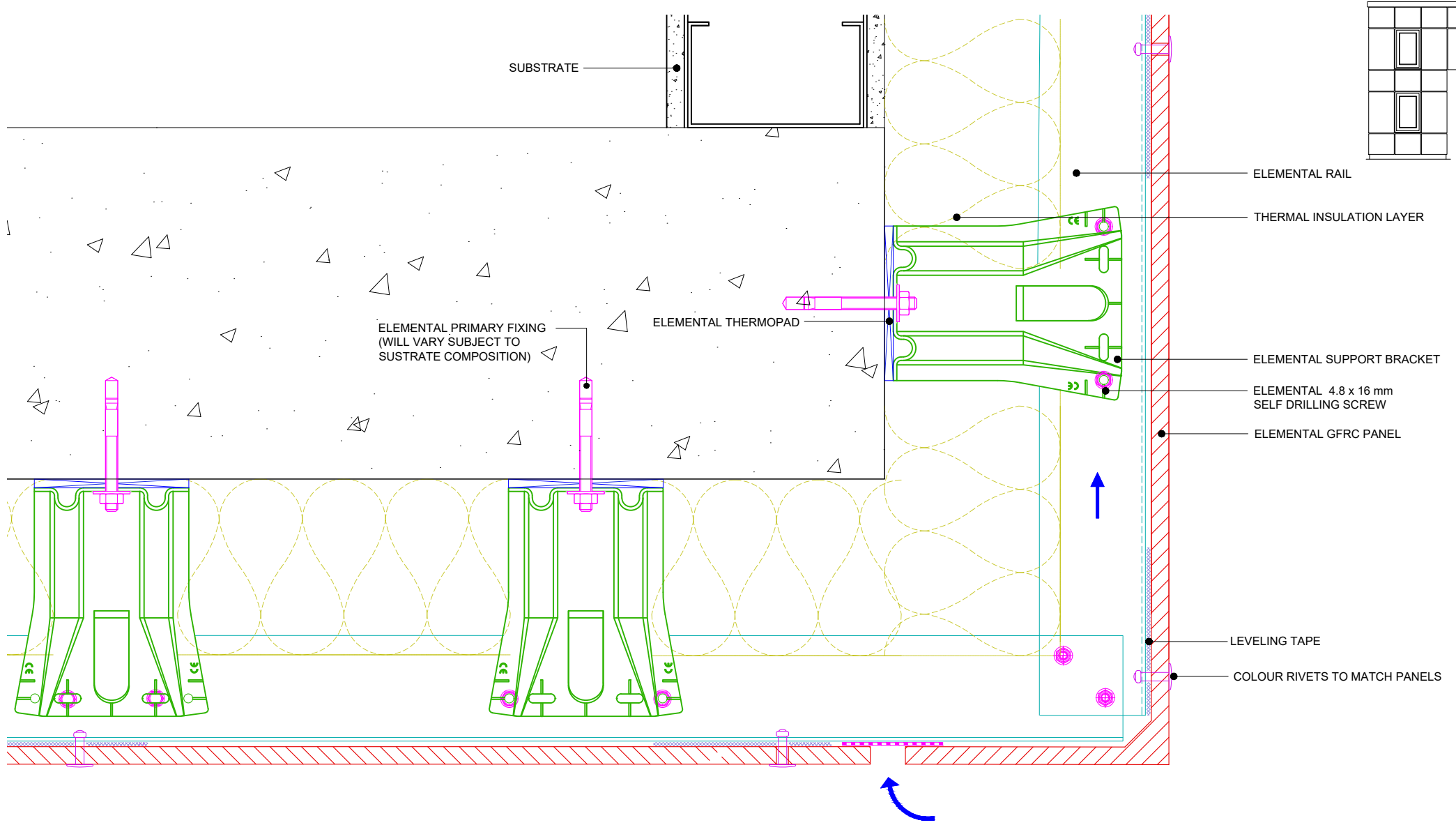
Drawn:

**V.C.**

Rev.

**01**

These drawings are indicative only, for use as a guide. The customer is always responsible for any specific design, structural calculations and calculating exact sizes & quantities of panels. Any project details and calculations supplied by Elemental Architectural Cladding Specialists are provided in good faith and should always be checked and approved by the project engineer responsible. Elemental Architectural Cladding Specialists will not accept any liability should the system be designed / installed incorrectly.

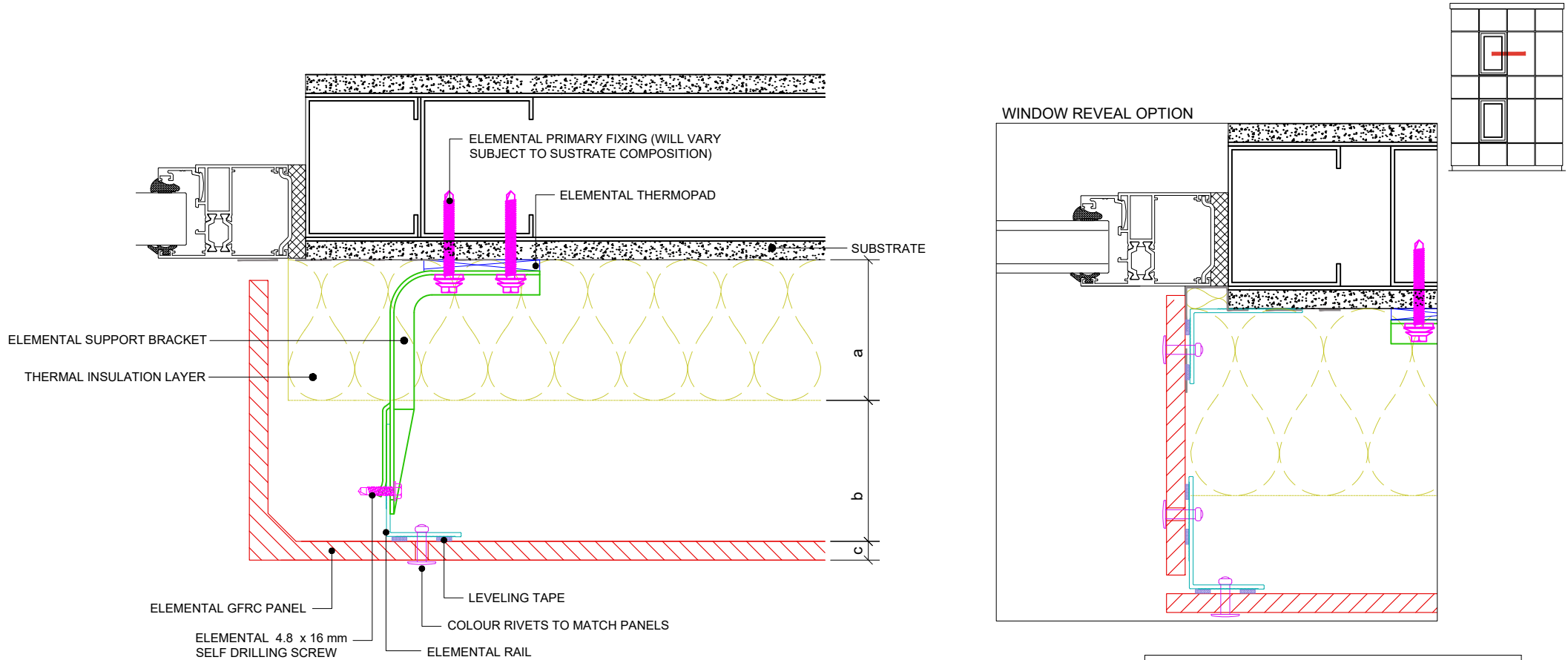


**Elemental Architectural Cladding Specialists**  
 #29 The Cubes Offices, Beacon South Quarter,  
 Sandyford  
 Dublin 18, D18 A264  
 Phone: +353 (0)1 293 8951  
 Email: info@elemental.ie

Drawing Title	ELEMENTAL GFRc - RIVET FIX SOFFIT DETAIL										
Drawing No.	EL-SB-RG18	System:	EL-Rivet GFRc	Size:	A4	Scale:	NTS	Drawn:	V.C.	Rev.	01

Elemental Architectural Cladding Specialists reserve the right to amend details at any time without prior notice. Reproduction or disclosure to third parties is strictly prohibited and can only be attained through signed, written consent from Elemental ACS.

These drawings are indicative only, for use as a guide. The customer is always responsible for any specific design, structural calculations and calculating exact sizes & quantities of panels. Any project details and calculations supplied by Elemental Architectural Cladding Specialists are provided in good faith and should always be checked and approved by the project engineer responsible. Elemental Architectural Cladding Specialists will not accept any liability should the system be designed / installed incorrectly.



Dimensions	
a	Insulation thickness (varies)
b	Free vertical ventilation gap
c	Panel nominal thickness
a+b	Clad Zone

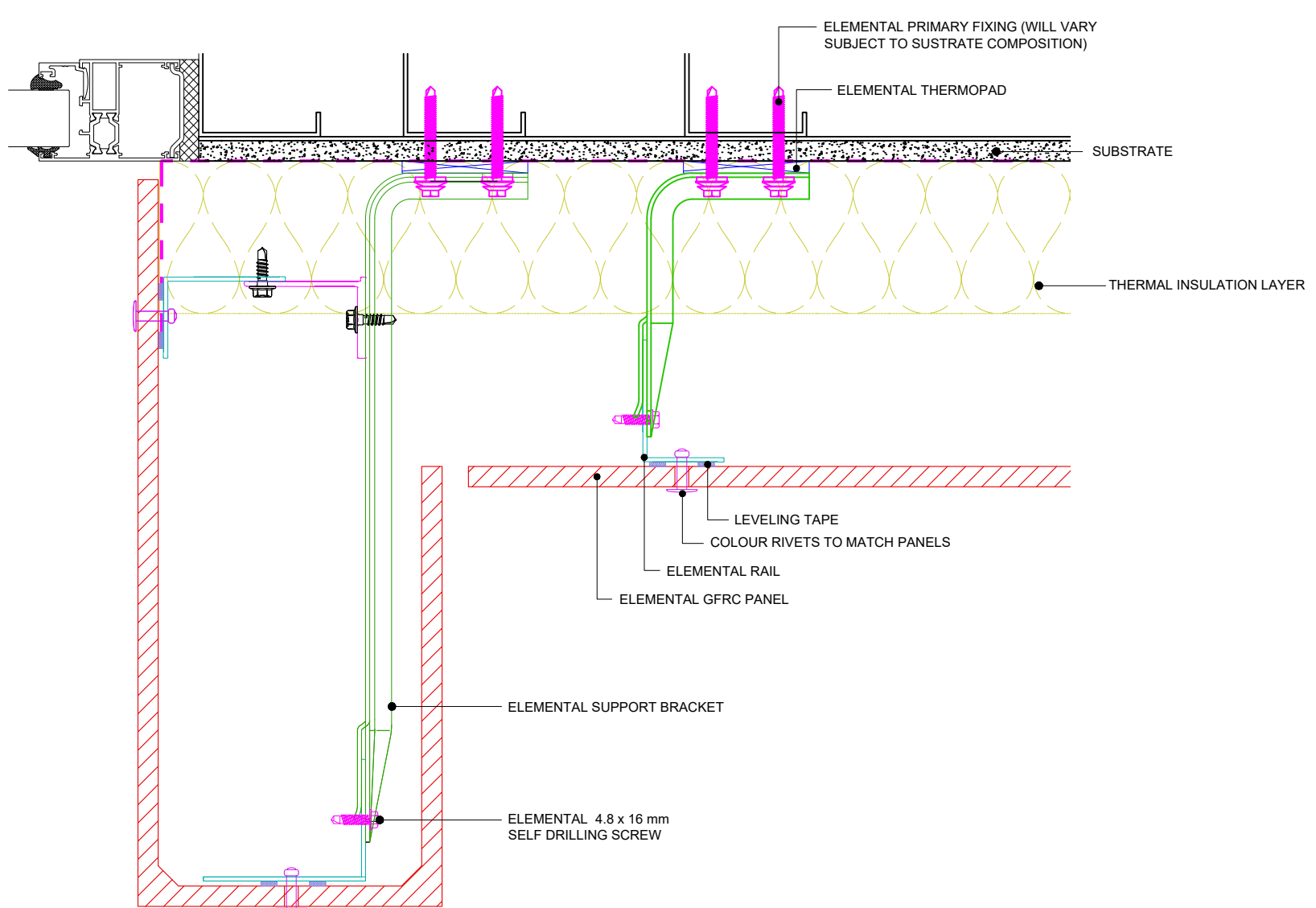


**Elemental Architectural Cladding Specialists**  
 #29 The Cubes Offices, Beacon South Quarter,  
 Sandyford  
 Dublin 18, D18 A264  
 Phone: +353 (0)1 293 8951  
 Email: info@elemental.ie

Drawing Title	ELEMENTAL GFRG - RIVET FIX WINDOW JAM REVEAL DETAILS										
Drawing No.	EL-SB-RG19	System:	EL-Rivet GFRG	Size:	A4	Scale:	NTS	Drawn:	V.C.	Rev.	01

Elemental Architectural Cladding Specialists reserve the right to amend details at any time without prior notice. Reproduction or disclosure to third parties is strictly prohibited and can only be attained through signed, written consent from Elemental ACS.

These drawings are indicative only, for use as a guide. The customer is always responsible for any specific design, structural calculations and calculating exact sizes & quantities of panels. Any project details and calculations supplied by Elemental Architectural Cladding Specialists are provided in good faith and should always be checked and approved by the project engineer responsible. Elemental Architectural Cladding Specialists will not accept any liability should the system be designed / installed incorrectly.



**Elemental Architectural Cladding Specialists**  
 #29 The Cubes Offices, Beacon South Quarter,  
 Sandyford  
 Dublin 18, D18 A264  
 Phone: +353 (0)1 293 8951  
 Email: info@elemental.ie

Drawing Title

**ELEMENTAL GFRc - RIVET FIX  
 WINDOW JAM REVEAL - COMPLETE PIECE OPTION 1**

Drawing No.

**EL-SB-RG20**

System:

**EL-Rivet  
 GFRc**

Size:

**A4**

Scale:

**NTS**

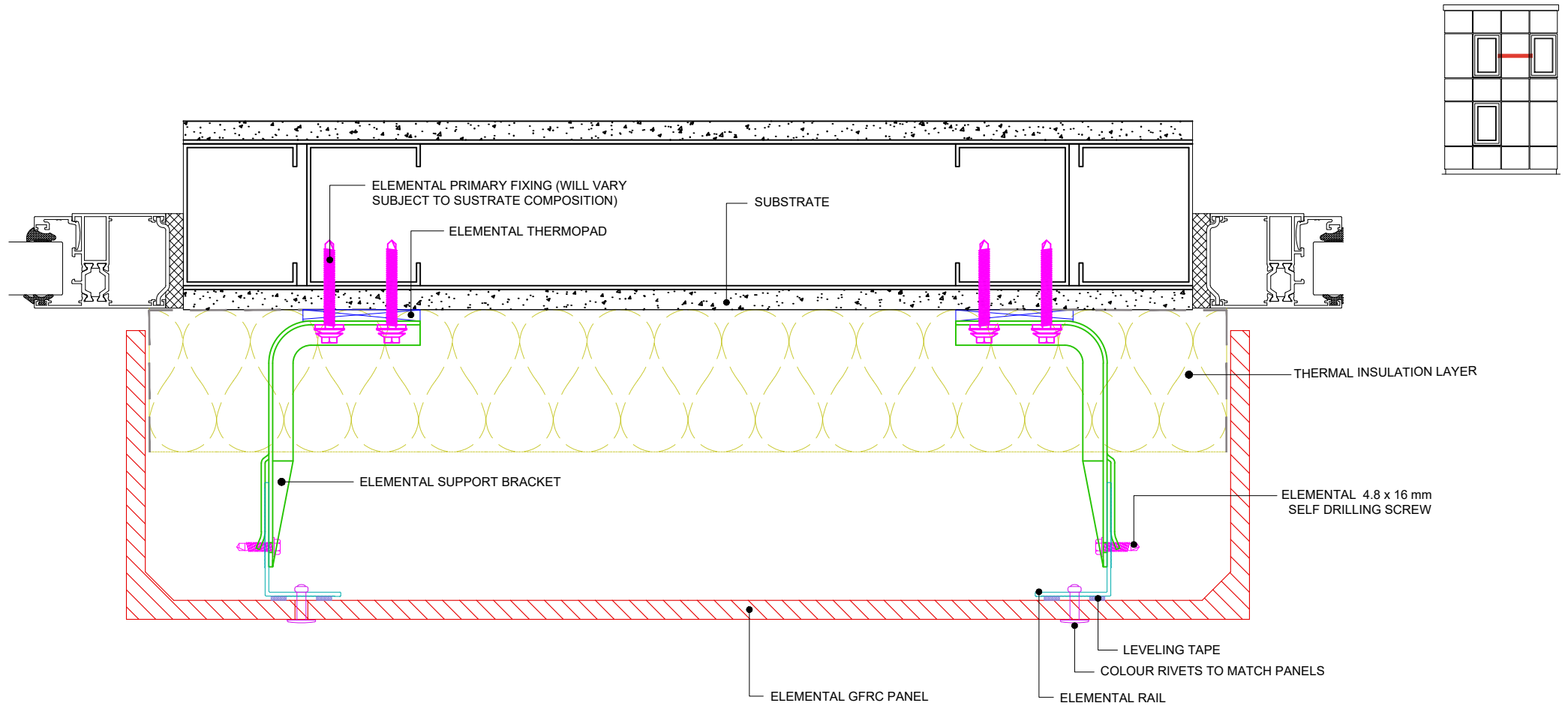
Drawn:

**V.C.**

Rev.

**01**

These drawings are indicative only, for use as a guide. The customer is always responsible for any specific design, structural calculations and calculating exact sizes & quantities of panels. Any project details and calculations supplied by Elemental Architectural Cladding Specialists are provided in good faith and should always be checked and approved by the project engineer responsible. Elemental Architectural Cladding Specialists will not accept any liability should the system be designed / installed incorrectly.



**Elemental Architectural Cladding Specialists**  
 #29 The Cubes Offices, Beacon South Quarter,  
 Sandyford  
 Dublin 18, D18 A264  
 Phone: +353 (0)1 293 8951  
 Email: info@elemental.ie

Drawing Title

**ELEMENTAL GFR - MSF  
 WINDOW JAM REVEAL - COMPLETE PIECE OPTION 2**

Drawing No.

**EL-SB-RG21**

System:

**EL-Rivet  
 GFR**

Size:

**A4**

Scale:

**NTS**

Drawn:

**V.C.**

Rev.

**01**