

## Ventilated facade EL-SB-SZS

Elemental-SFS Bracket-SZ Stacbond

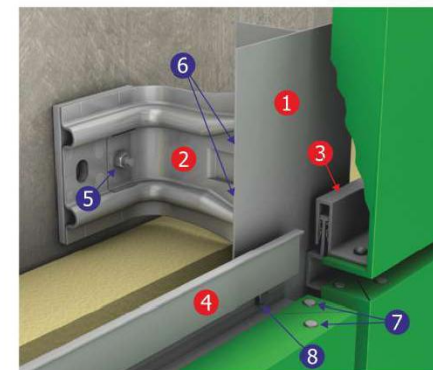
**Stacbond**, Two aluminium sheets and an inner core of thermoplastic base and mineral charge

4mm Stacbond Panel thickness  
Face Fix onto 1-layer . Metal substructure

### Contents:

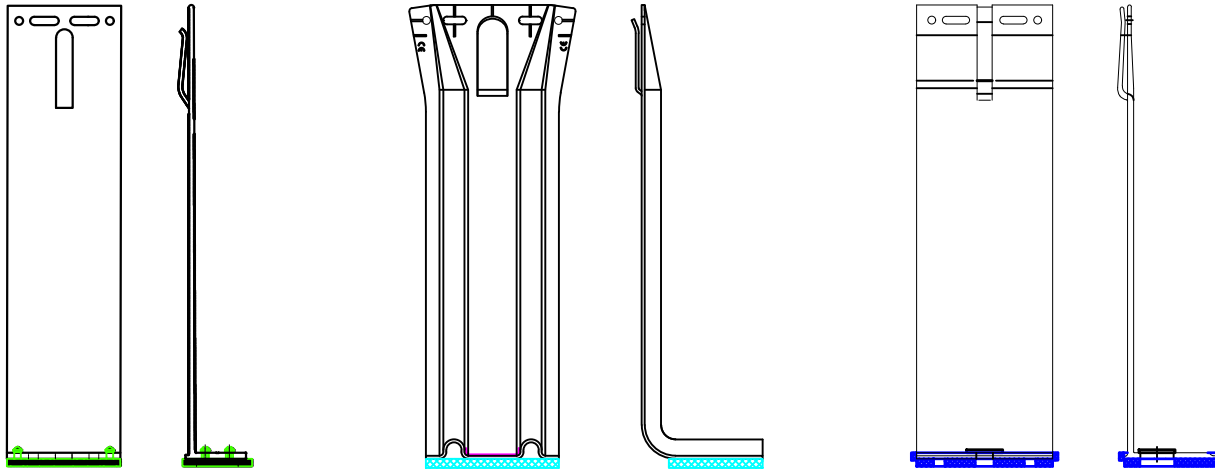
EL-SB-SZS-01	BRACKET TYPES AVAILABLE
EL-SB-SZS-02	BASE DETAIL OPTION 1
EL-SB-SZS-03	BASE DETAIL OPTION 2
EL-SB-SZS-04	BASE DETAIL OPTION 3
EL-SB-SZS-05	VERTICAL SECTION SOFFIT
EL-SB-SZS-06	HORIZONTAL PANEL JOINT DETAIL
EL-SB-SZS-07	HORIZONTAL JOINT & PANEL REINFORCEMENT
EL-SB-SZS-08	WINDOW CILL OPTION 1
EL-SB-SZS-09	WINDOW CILL OPTION 2
EL-SB-SZS-10	WINDOW CILL OPTION 3
EL-SB-SZS-11	WINDOW HEAD OPTION 1
EL-SB-SZS-12	WINDOW HEAD OPTION 2
EL-SB-SZS-13	GENERIC PARAPET DETAIL
EL-SB-SZS-14	VERTICAL JOINT DETAIL
EL-SB-SZS-15	EXTERNAL CORNER DETAIL
EL-SB-SZS-16	INTERNAL CORNER DETAIL
EL-SB-SZS-17	WINDOW REVEAL DETAIL OPTION 1
EL-SB-SZS-18	WINDOW REVEAL DETAIL OPTION 2
EL-SB-SZS-19	LATERAL CLADDING END

Image for illustration purposes



- 1 'L' or 'T' Rail
  - 2 Support Bracket
  - 3 'S' Rail
  - 4 'Z' Rail
- FIXINGS:**
- 5 Bracket to Wall Fixings/Anchors
  - 6 Rail to Bracket Fixings
  - 7 Colour Coordinated Assembly Rivets
  - 8 Panel Securing Rivets

# BRACKET TYPES AVAILABLE FROM ELEMENTAL



## SPIDI MAX BRACKETS LENGTH

TOLERANCE COMPENSATION

max. 40mm  
tolerance compensation  
(according to profile specifications)

SLIDING POINT

FIXED POINT

SPIDI-max wall bracket		SPIDI-max wall bracket	
description	length L	description	length L
SPIDI max 65/80	65	SPIDI max 480/80	480
SPIDI max 85/80	85	SPIDI max 510/80	510
SPIDI max 110/80	110	SPIDI max 540/80	540
SPIDI max 135/80	135	SPIDI max 570/80	570
SPIDI max 160/80	160	SPIDI max 600/80	600
SPIDI max 170/80	170	SPIDI max 630/80	630
SPIDI max 185/80	185	SPIDI max 660/80	660
SPIDI max 210/80	210	SPIDI max 690/80	690
SPIDI max 240/80	240	SPIDI max 720/80	720
SPIDI max 270/80	270	SPIDI max 750/80	750
SPIDI max 300/80	300	SPIDI max 780/80	780
SPIDI max 330/80	330	SPIDI max 810/80	810
SPIDI max 360/80	360	SPIDI max 840/80	840
SPIDI max 390/80	390	SPIDI max 870/80	870
SPIDI max 420/80	420	SPIDI max 900/80	900
SPIDI max 450/80	450	special length	on request



**elemental**  
Architectural Cladding Specialists

**Elemental Architectural Cladding Specialists**  
#29 The Cubes Offices, Beacon South Quarter,  
Sandyford  
Dublin 18, D18 A264  
Phone: +353 (0)1 293 8951  
Email: info@elemental.ie

Drawing Title

BRACKET TYPES AVAILABLE

Drawing No.

EL-SB-SZS-01

System:

EL-MSF  
Stacbond

Size:

A4

Scale:

NTS

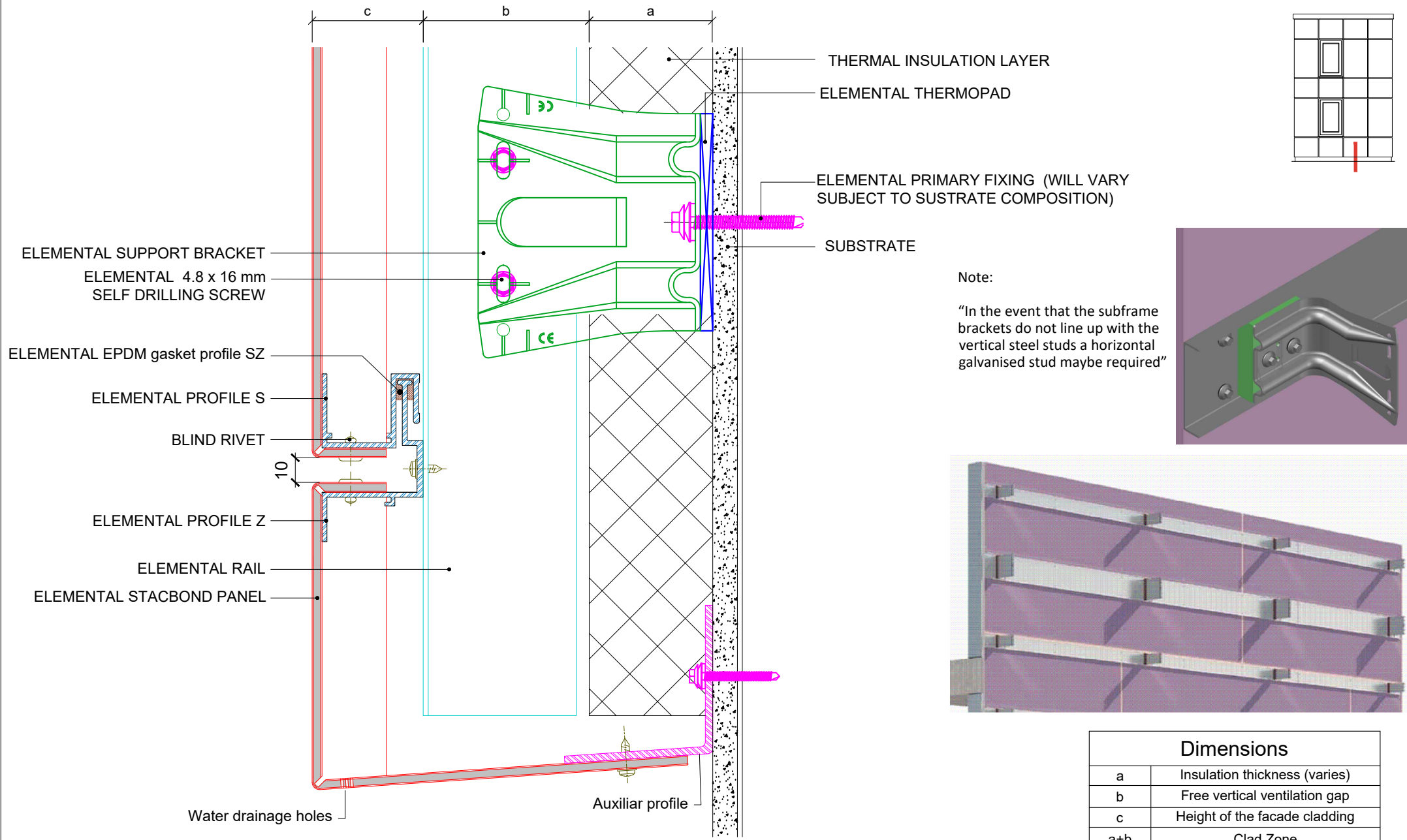
Drawn:

V.C.

Rev.

01

These drawings are indicative only, for use as a guide. The customer is always responsible for any specific design, structural calculations and calculating exact sizes & quantities of panels. Any project details and calculations supplied by Elemental Architectural Cladding Specialists are provided in good faith and should always be checked and approved by the project engineer responsible. Elemental Architectural Cladding Specialists will not accept any liability should the system be designed / installed incorrectly.

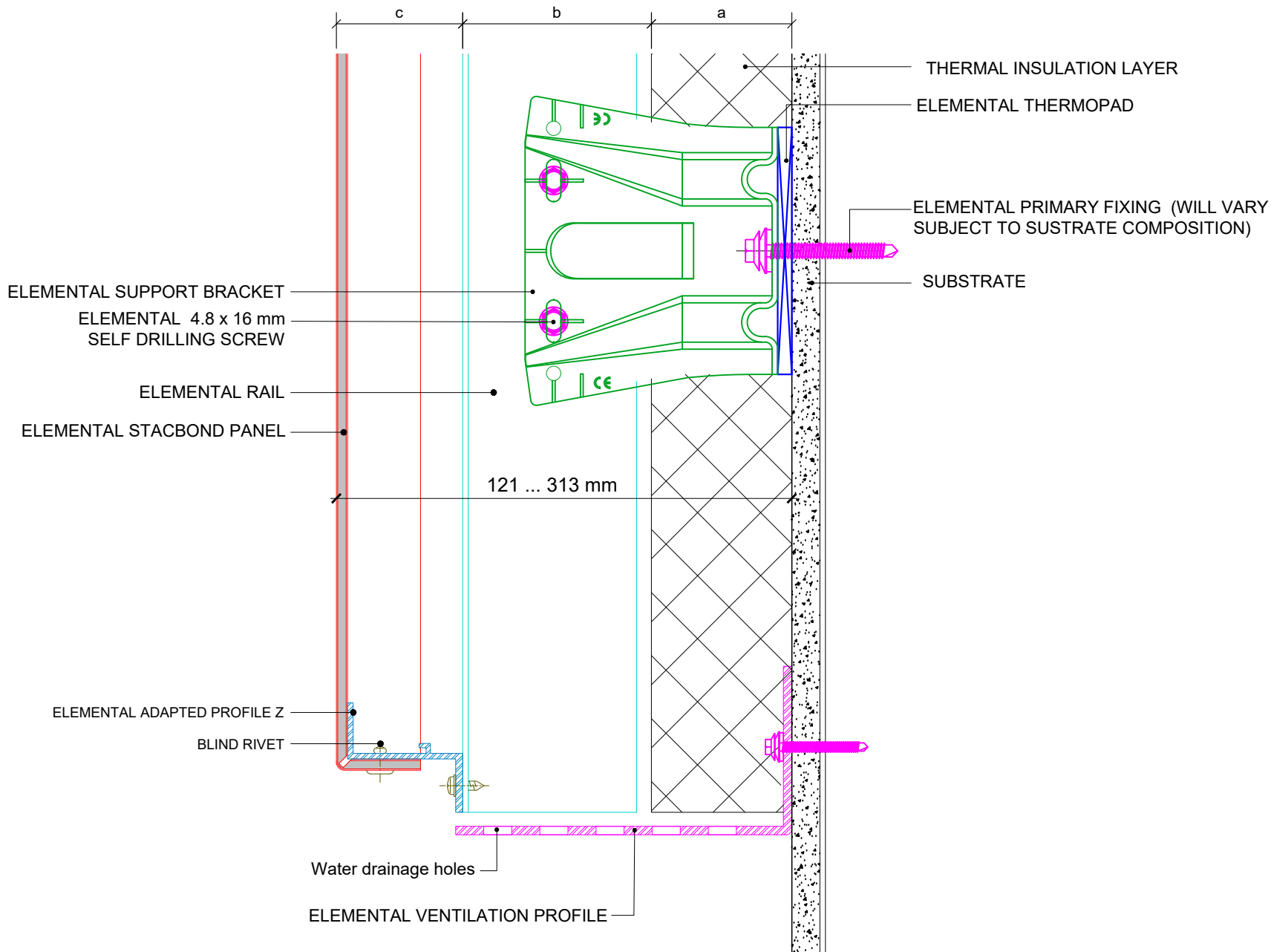


Dimensions	
a	Insulation thickness (varies)
b	Free vertical ventilation gap
c	Height of the facade cladding
a+b	Clad Zone

**Elemental Architectural Cladding Specialists**  
 #29 The Cubes Offices, Beacon South Quarter,  
 Sandyford  
 Dublin 18, D18 A264  
 Phone: +353 (0)1 293 8951  
 Email: info@elemental.ie

Drawing Title		ELEMENTAL STACBOND - MSF BASE DETAIL OPTION 1									
Drawing No.	EL-SB-SZS-02	System:	EL-MSF Stacbond	Size:	A4	Scale:	NTS	Drawn:	V.C.	Rev.	01

These drawings are indicative only, for use as a guide. The customer is always responsible for any specific design, structural calculations and calculating exact sizes & quantities of panels. Any project details and calculations supplied by Elemental Architectural Cladding Specialists are provided in good faith and should always be checked and approved by the project engineer responsible. Elemental Architectural Cladding Specialists will not accept any liability should the system be designed / installed incorrectly.



Dimensions	
a	Insulation thickness (varies)
b	Free vertical ventilation gap
c	Height of the facade cladding
a+b	Clad Zone



**Elemental Architectural Cladding Specialists**  
 #29 The Cubes Offices, Beacon South Quarter,  
 Sandyford  
 Dublin 18, D18 A264  
 Phone: +353 (0)1 293 8951  
 Email: info@elemental.ie

Drawing Title

**ELEMENTAL STACBOND - MSF  
 BASE DETAIL OPTION 2**

Drawing No.

**EL-SB-SZS-03**

System:

**EL-MSF  
 Stacbond**

Size:

**A4**

Scale:

**NTS**

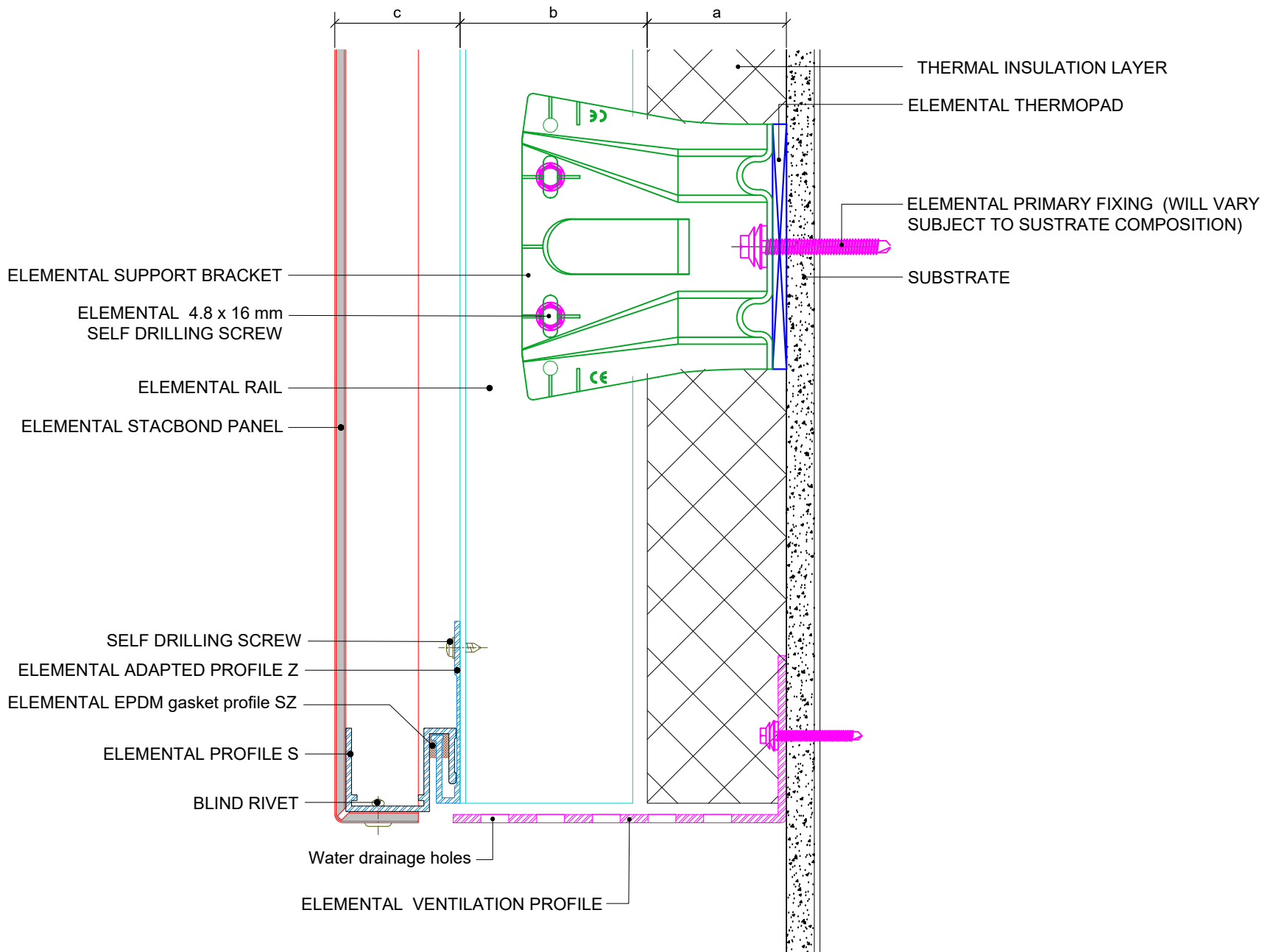
Drawn:

**V.C.**

Rev.

**01**

These drawings are indicative only, for use as a guide. The customer is always responsible for any specific design, structural calculations and calculating exact sizes & quantities of panels. Any project details and calculations supplied by Elemental Architectural Cladding Specialists are provided in good faith and should always be checked and approved by the project engineer responsible. Elemental Architectural Cladding Specialists will not accept any liability should the system be designed / installed incorrectly.



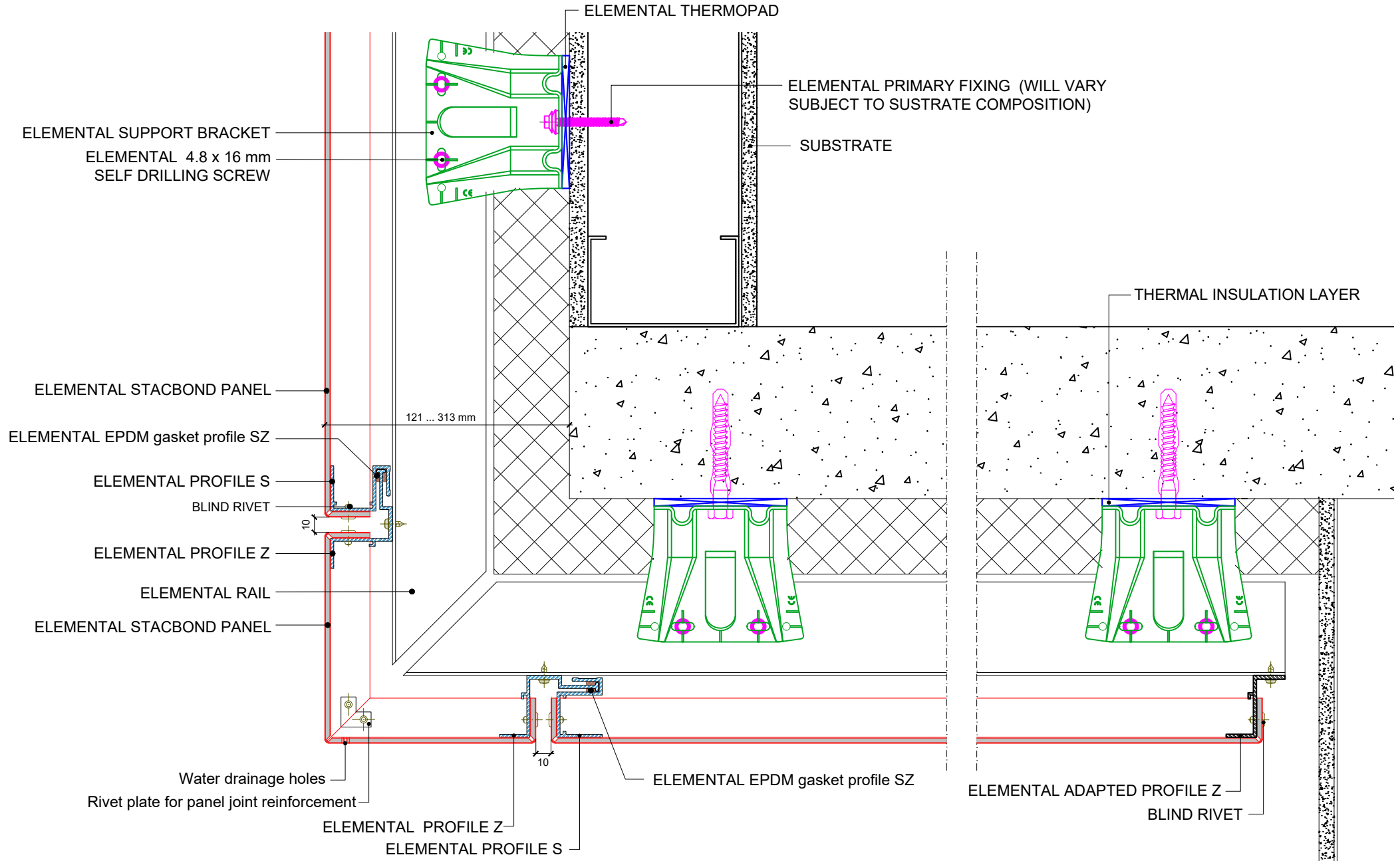
Dimensions	
a	Insulation thickness (varies)
b	Free vertical ventilation gap
c	Height of the facade cladding
a+b	Clad Zone

**Elemental Architectural Cladding Specialists**  
 #29 The Cubes Offices, Beacon South Quarter,  
 Sandyford  
 Dublin 18, D18 A264  
 Phone: +353 (0)1 293 8951  
 Email: info@elemental.ie

Drawing Title		<b>ELEMENTAL STACBOND - MSF BASE DETAIL OPTION 3</b>									
Drawing No.	EL-SB-SZS-04	System:	EL-MSF Stacbond	Size:	A4	Scale:	NTS	Drawn:	V.C.	Rev.	<b>01</b>

Elemental Architectural Cladding Specialists reserve the right to amend details at any time without prior notice. Reproduction or disclosure to third parties is strictly prohibited and can only be attained through signed, written consent from Elemental ACS.

These drawings are indicative only, for use as a guide. The customer is always responsible for any specific design, structural calculations and calculating exact sizes & quantities of panels. Any project details and calculations supplied by Elemental Architectural Cladding Specialists are provided in good faith and should always be checked and approved by the project engineer responsible. Elemental Architectural Cladding Specialists will not accept any liability should the system be designed / installed incorrectly.

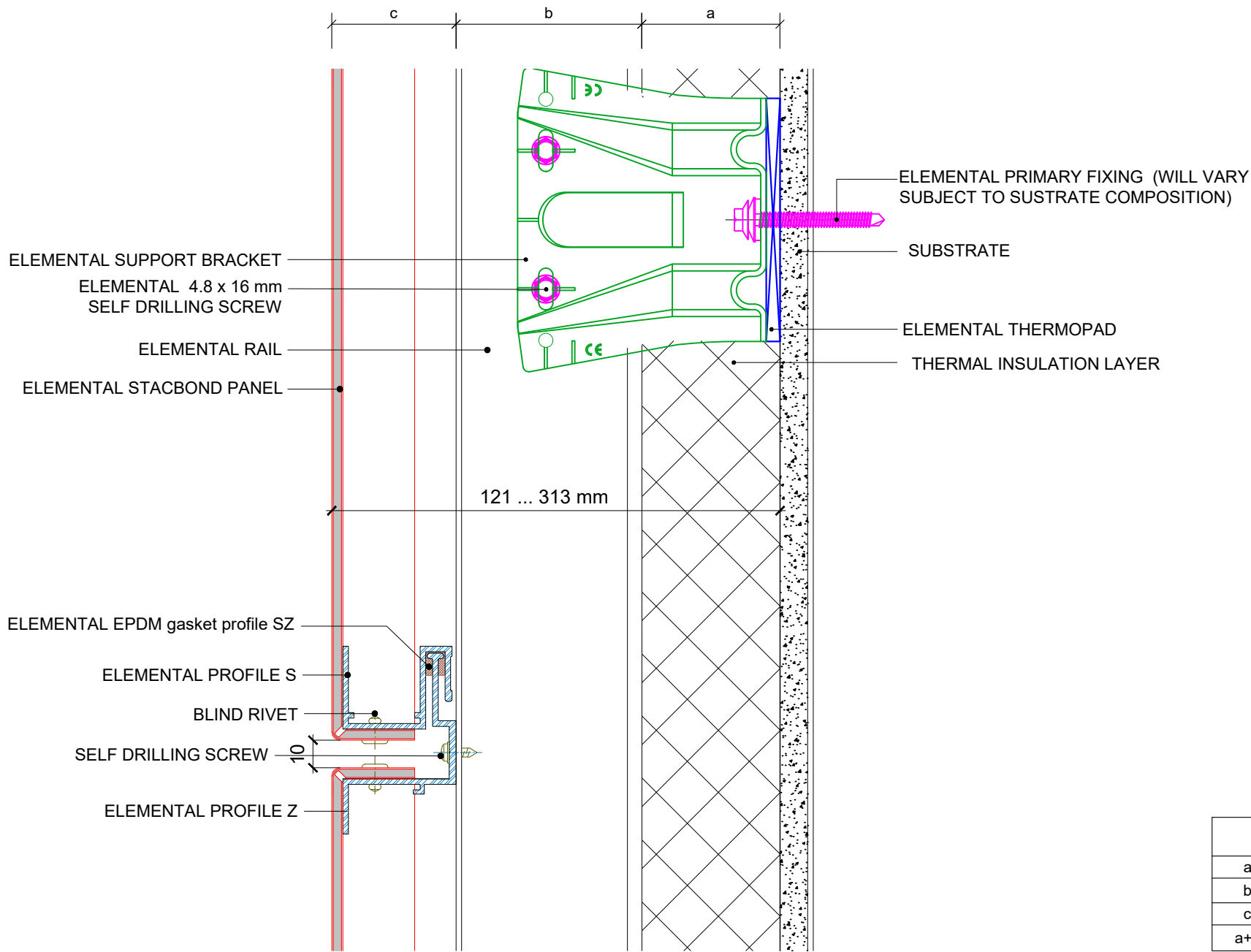


**Elemental Architectural Cladding Specialists**  
 #29 The Cubes Offices, Beacon South Quarter,  
 Sandyford  
 Dublin 18, D18 A264  
 Phone: +353 (0)1 293 8951  
 Email: info@elemental.ie

Drawing Title	ELEMENTAL STACBOND - MSF VERTICAL SECTION SOFFIT										
Drawing No.	EL-SB-SZS-05	System:	EL-MSF Stacbond	Size:	A4	Scale:	NTS	Drawn:	V.C.	Rev.	01

Elemental Architectural Cladding Specialists reserve the right to amend details at any time without prior notice. Reproduction or disclosure to third parties is strictly prohibited and can only be attained through signed, written consent from Elemental ACS.

These drawings are indicative only, for use as a guide. The customer is always responsible for any specific design, structural calculations and calculating exact sizes & quantities of panels. Any project details and calculations supplied by Elemental Architectural Cladding Specialists are provided in good faith and should always be checked and approved by the project engineer responsible. Elemental Architectural Cladding Specialists will not accept any liability should the system be designed / installed incorrectly.



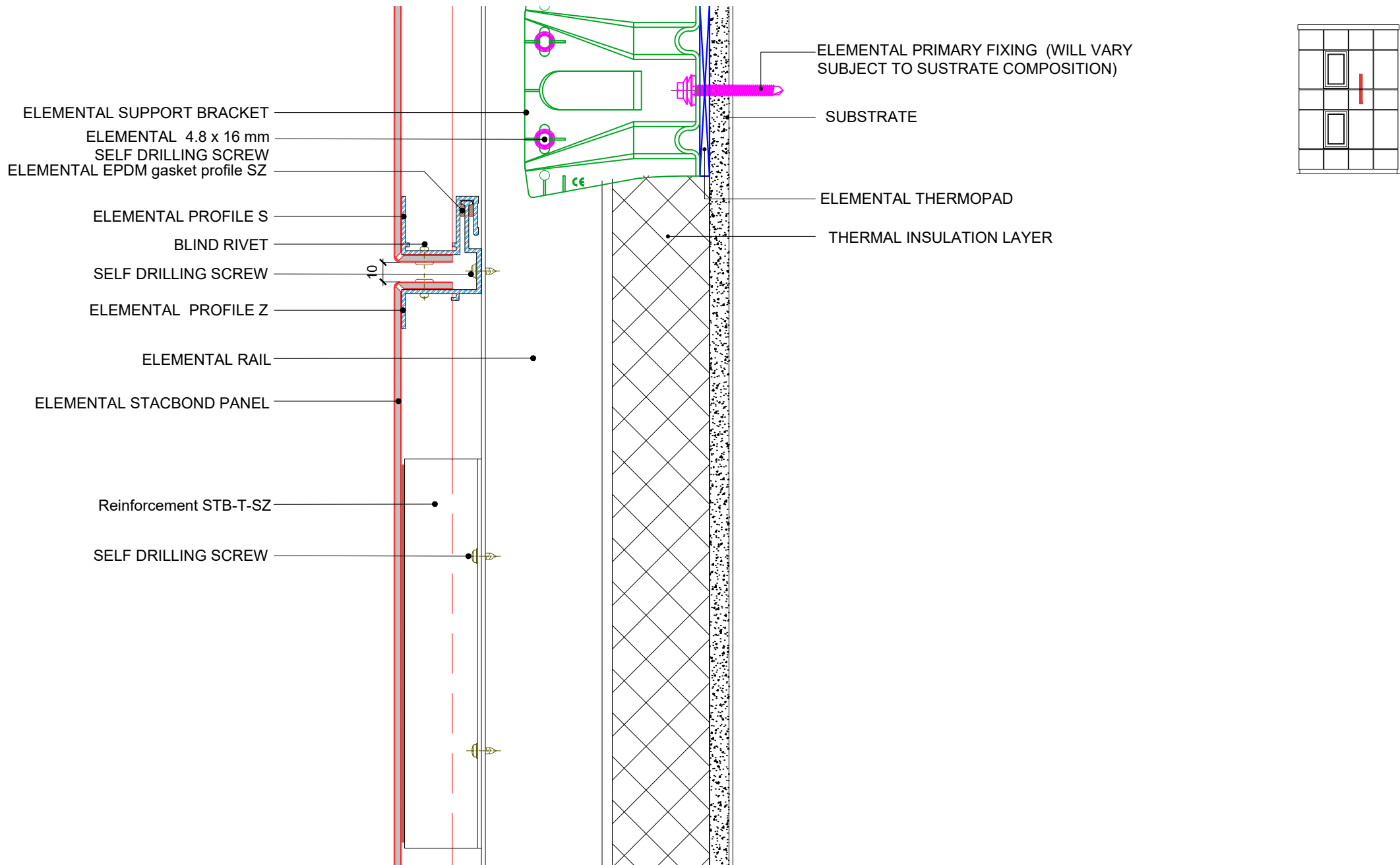
Dimensions	
a	Insulation thickness (varies)
b	Free vertical ventilation gap
c	Height of the facade cladding
a+b	Clad Zone



**Elemental Architectural Cladding Specialists**  
 #29 The Cubes Offices, Beacon South Quarter,  
 Sandyford  
 Dublin 18, D18 A264  
 Phone: +353 (0)1 293 8951  
 Email: info@elemental.ie

Drawing Title	ELEMENTAL STACBOND - MSF HORIZONTAL PANEL JOINT DETAIL										
Drawing No.	EL-SB-SZS-06	System:	EL-MSF Stacbond	Size:	A4	Scale:	NTS	Drawn:	V.C.	Rev.	01

These drawings are indicative only, for use as a guide. The customer is always responsible for any specific design, structural calculations and calculating exact sizes & quantities of panels. Any project details and calculations supplied by Elemental Architectural Cladding Specialists are provided in good faith and should always be checked and approved by the project engineer responsible. Elemental Architectural Cladding Specialists will not accept any liability should the system be designed / installed incorrectly.



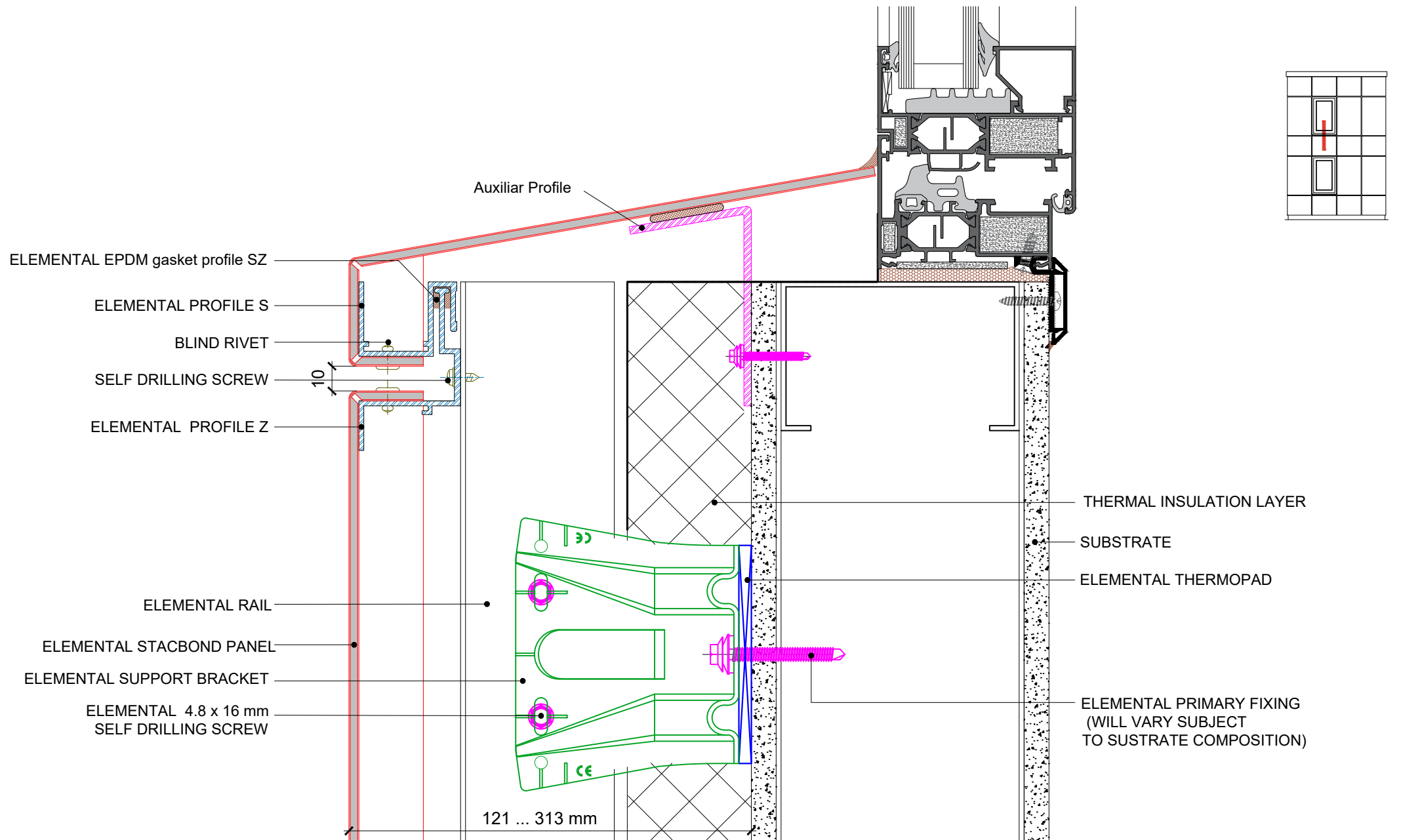
**Elemental Architectural Cladding Specialists**  
 #29 The Cubes Offices, Beacon South Quarter,  
 Sandyford  
 Dublin 18, D18 A264  
 Phone: +353 (0)1 293 8951  
 Email: info@elemental.ie

Drawing Title		ELEMENTAL STACBOND - MSF HORIZONTAL JOINT & PANEL REINFORCEMENT									
Drawing No.	EL-SB-SZS-07	System:	EL-MSF Stacbond	Size:	A4	Scale:	NTS	Drawn:	V.C.	Rev.	01

Elemental Architectural Cladding Specialists reserve the right to amend details at any time without prior notice. Reproduction or disclosure to third parties is strictly prohibited and can only be attained through signed, written consent from Elemental ACS.



These drawings are indicative only, for use as a guide. The customer is always responsible for any specific design, structural calculations and calculating exact sizes & quantities of panels. Any project details and calculations supplied by Elemental Architectural Cladding Specialists are provided in good faith and should always be checked and approved by the project engineer responsible. Elemental Architectural Cladding Specialists will not accept any liability should the system be designed / installed incorrectly.



**elemental**  
Architectural Cladding Specialists

**Elemental Architectural Cladding Specialists**  
#29 The Cubes Offices, Beacon South Quarter,  
Sandyford  
Dublin 18, D18 A264  
Phone: +353 (0)1 293 8951  
Email: info@elemental.ie

Drawing Title

Drawing No.

EL-SB-SZS-08

System:

EL-MSF  
Stacbond

**ELEMENTAL STACBOND - MSF  
WINDOW CILL OPTION 1**

Size:

**A4**

Scale:

**NTS**

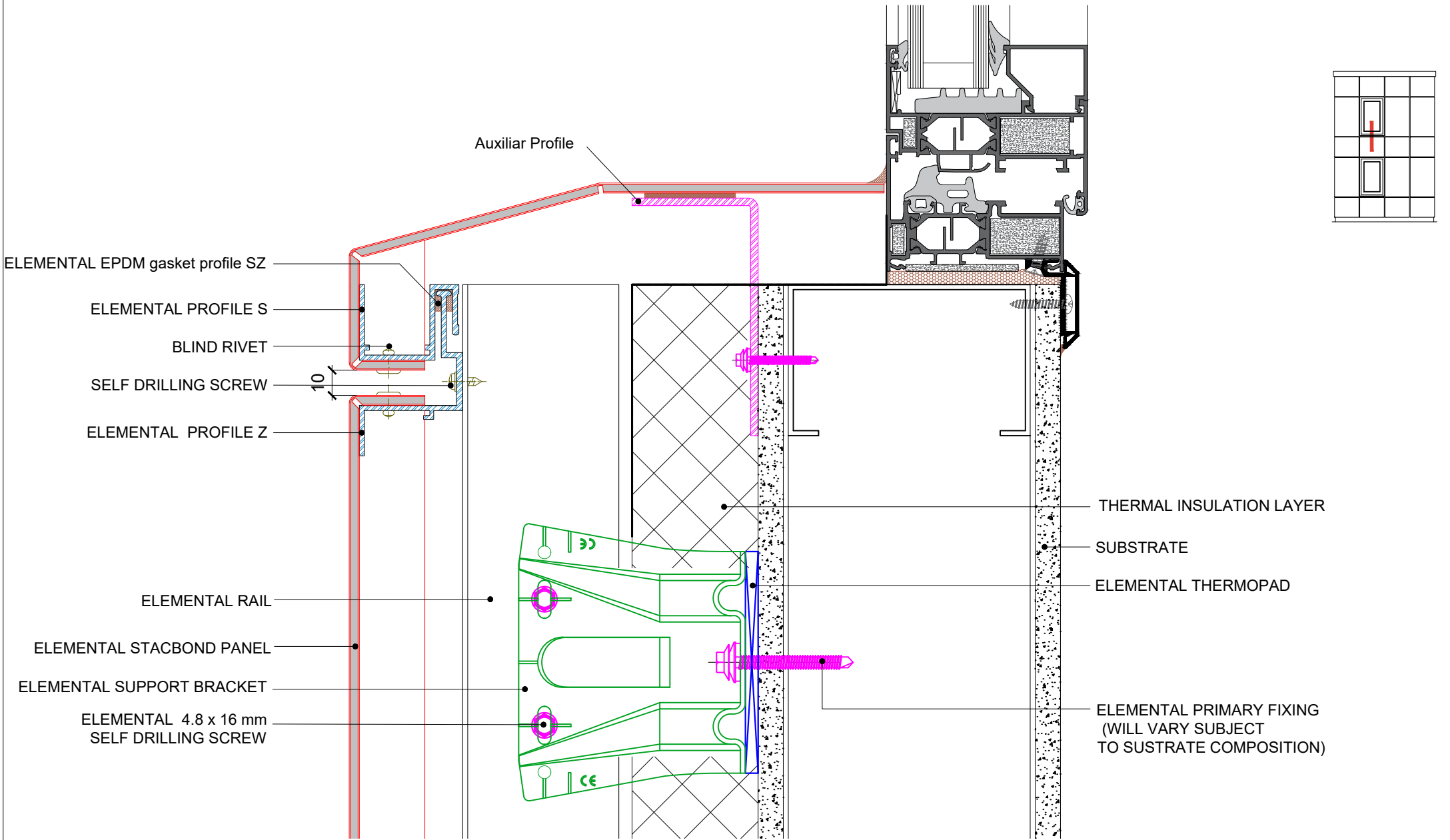
Drawn:


**V.C.**

Rev.

**01**

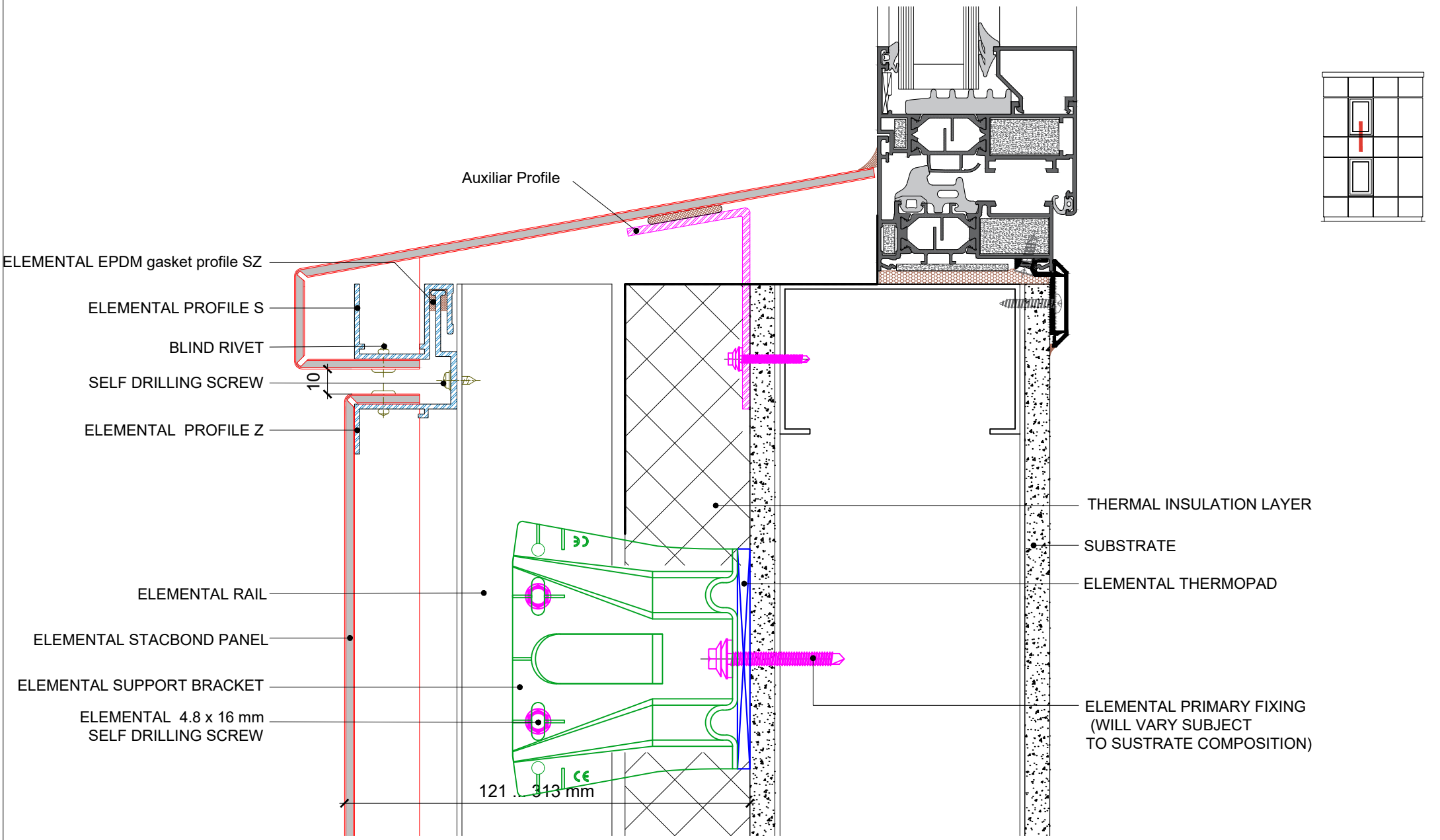
These drawings are indicative only, for use as a guide. The customer is always responsible for any specific design, structural calculations and calculating exact sizes & quantities of panels. Any project details and calculations supplied by Elemental Architectural Cladding Specialists are provided in good faith and should always be checked and approved by the project engineer responsible. Elemental Architectural Cladding Specialists will not accept any liability should the system be designed / installed incorrectly.




	<b>Elemental Architectural Cladding Specialists</b> #29 The Cubes Offices, Beacon South Quarter, Sandyford Dublin 18, D18 A264 Phone: +353 (0)1 293 8951 Email: info@elemental.ie		Drawing Title <b>ELEMENTAL STACBOND - MSF WINDOW CILL OPTION 2</b>		
	Drawing No. <b>EL-SB-SZS-09</b>	System: <b>EL-MSF Stacbond</b>	Size: <b>A4</b>	Scale: <b>NTS</b>	Drawn: <b>V.C.</b>

Elemental Architectural Cladding Specialists reserve the right to amend details at any time without prior notice. Reproduction or disclosure to third parties is strictly prohibited and can only be attained through signed, written consent from Elemental ACS.

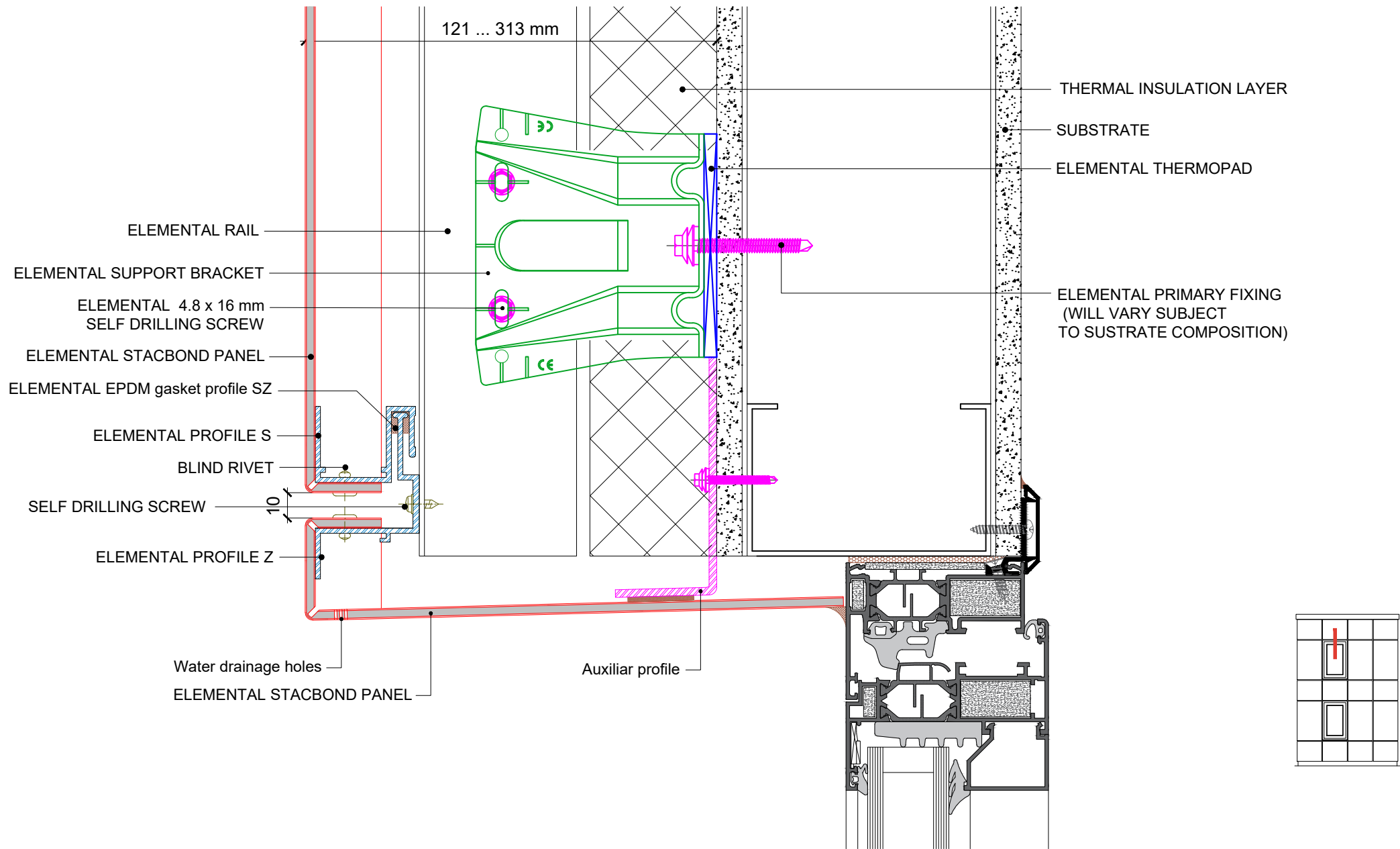
These drawings are indicative only, for use as a guide. The customer is always responsible for any specific design, structural calculations and calculating exact sizes & quantities of panels. Any project details and calculations supplied by Elemental Architectural Cladding Specialists are provided in good faith and should always be checked and approved by the project engineer responsible. Elemental Architectural Cladding Specialists will not accept any liability should the system be designed / installed incorrectly.



 <b>Elemental Architectural Cladding Specialists</b> #29 The Cubes Offices, Beacon South Quarter, Sandyford Dublin 18, D18 A264 Phone: +353 (0)1 293 8951 Email: info@elemental.ie	Drawing Title		ELEMENTAL STACBOND - MSF WINDOW CILL OPTION 3								
	Drawing No.	EL-SB-SZS-10	System:	EL-MSF Stacbond	Size:	A4	Scale:	NTS	Drawn:	V.C.	Rev.

Elemental Architectural Cladding Specialists reserve the right to amend details at any time without prior notice. Reproduction or disclosure to third parties is strictly prohibited and can only be attained through signed, written consent from Elemental ACS.

These drawings are indicative only, for use as a guide. The customer is always responsible for any specific design, structural calculations and calculating exact sizes & quantities of panels. Any project details and calculations supplied by Elemental Architectural Cladding Specialists are provided in good faith and should always be checked and approved by the project engineer responsible. Elemental Architectural Cladding Specialists will not accept any liability should the system be designed / installed incorrectly.



**Elemental Architectural Cladding Specialists**  
 #29 The Cubes Offices, Beacon South Quarter,  
 Sandyford  
 Dublin 18, D18 A264  
 Phone: +353 (0)1 293 8951  
 Email: info@elemental.ie

Drawing Title

**ELEMENTAL STACBOND - MSF  
 WINDOW HEAD OPTION 1**

Drawing No.

**EL-SB-SZS-11**

System:

**EL-MSF  
 Stacbond**

Size:

**A4**

Scale:

**NTS**

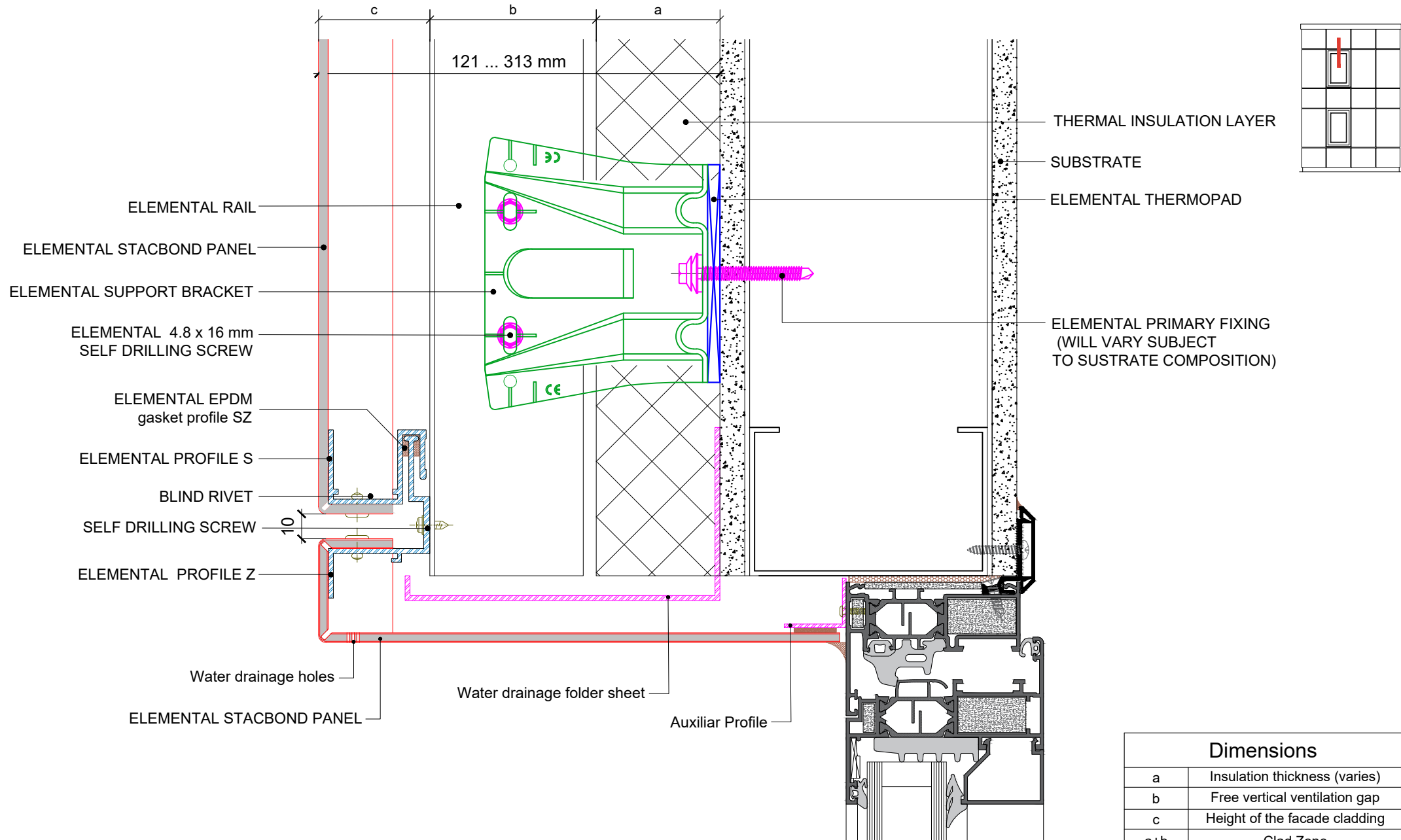
Drawn:

**V.C.**

Rev.

**01**

These drawings are indicative only, for use as a guide. The customer is always responsible for any specific design, structural calculations and calculating exact sizes & quantities of panels. Any project details and calculations supplied by Elemental Architectural Cladding Specialists are provided in good faith and should always be checked and approved by the project engineer responsible. Elemental Architectural Cladding Specialists will not accept any liability should the system be designed / installed incorrectly.



**Elemental Architectural Cladding Specialists**  
 #29 The Cubes Offices, Beacon South Quarter,  
 Sandyford  
 Dublin 18, D18 A264  
 Phone: +353 (0)1 293 8951  
 Email: info@elemental.ie

Drawing Title

**ELEMENTAL STACBOND - MSF  
 WINDOW HEAD OPTION 2**

Drawing No.

**EL-SB-SZS-12**

System:

**EL-MSF  
 Stacbond**

Size:

**A4**

Scale:

**NTS**

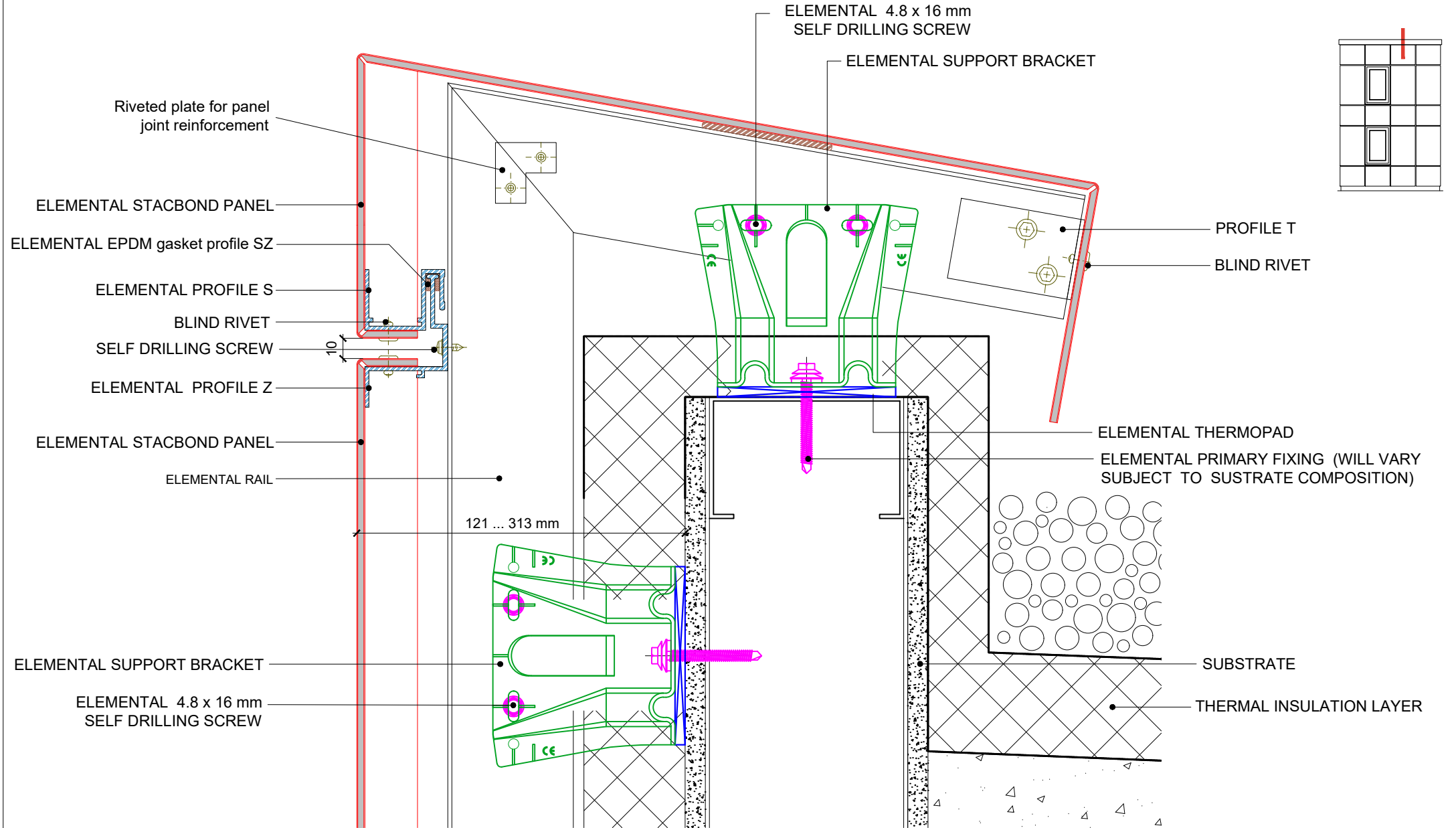
Drawn:


**V.C.**

Rev.

**01**

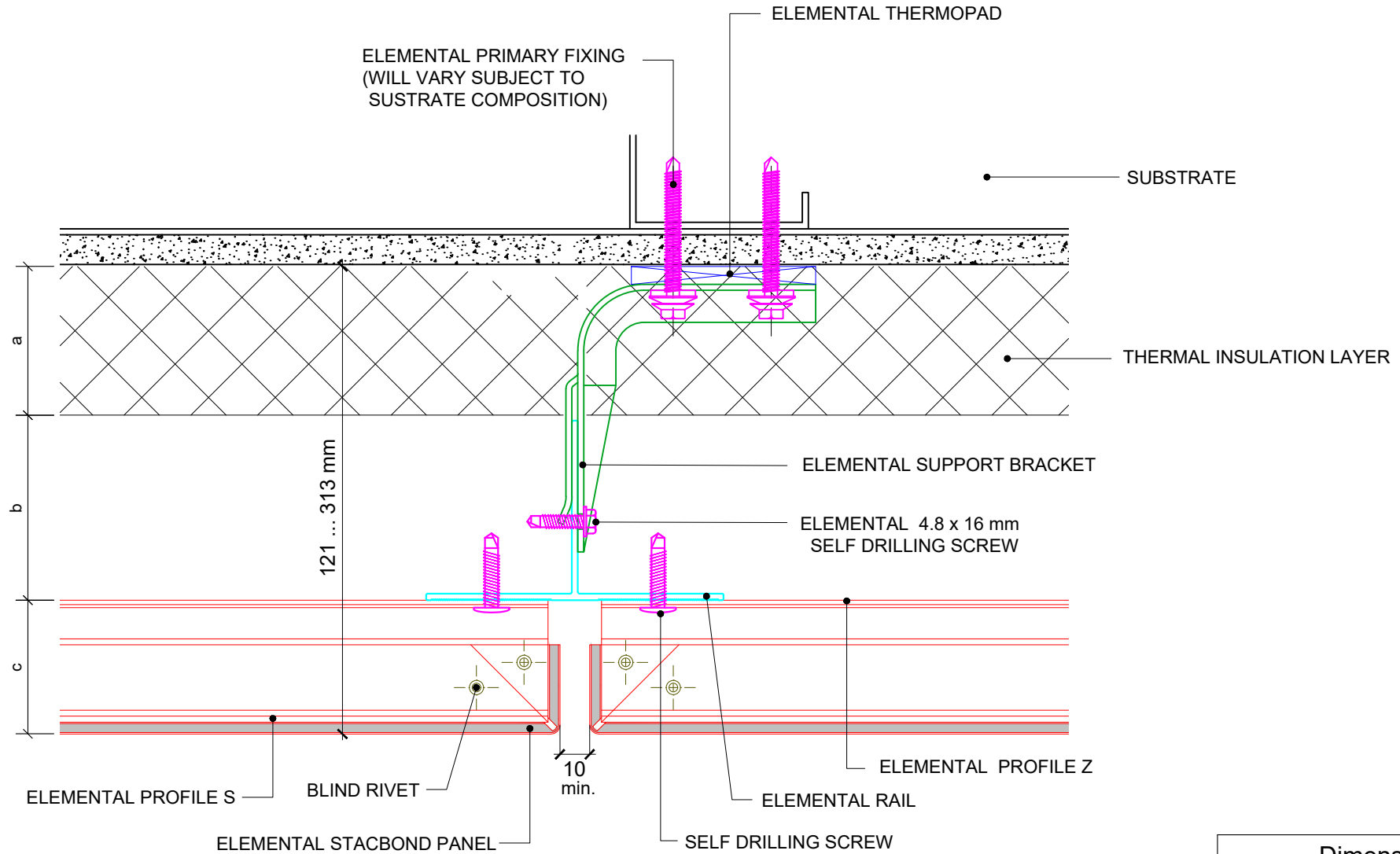
These drawings are indicative only, for use as a guide. The customer is always responsible for any specific design, structural calculations and calculating exact sizes & quantities of panels. Any project details and calculations supplied by Elemental Architectural Cladding Specialists are provided in good faith and should always be checked and approved by the project engineer responsible. Elemental Architectural Cladding Specialists will not accept any liability should the system be designed / installed incorrectly.



 <p><b>Elemental Architectural Cladding Specialists</b>                  #29 The Cubes Offices, Beacon South Quarter,                  Sandyford                  Dublin 18, D18 A264                  Phone: +353 (0)1 293 8951                  Email: info@elemental.ie</p>	Drawing Title		<b>ELEMENTAL STACBOND - MSF GENERIC PARAPET</b>								
	Drawing No.	EL-SB-SZS-13	System:	EL-MSF Stacbond	Size:	A4	Scale:	NTS	Drawn:	V.C.	Rev.

Elemental Architectural Cladding Specialists reserve the right to amend details at any time without prior notice. Reproduction or disclosure to third parties is strictly prohibited and can only be attained through signed, written consent from Elemental ACS.

These drawings are indicative only, for use as a guide. The customer is always responsible for any specific design, structural calculations and calculating exact sizes & quantities of panels. Any project details and calculations supplied by Elemental Architectural Cladding Specialists are provided in good faith and should always be checked and approved by the project engineer responsible. Elemental Architectural Cladding Specialists will not accept any liability should the system be designed / installed incorrectly.



Dimensions	
a	Insulation thickness (varies)
b	Free vertical ventilation gap
c	Height of the facade cladding
a+b	Clad Zone



**Elemental Architectural Cladding Specialists**  
 #29 The Cubes Offices, Beacon South Quarter,  
 Sandyford  
 Dublin 18, D18 A264  
 Phone: +353 (0)1 293 8951  
 Email: info@elemental.ie

Drawing Title

**ELEMENTAL STACBOND - MSF  
 VERTICAL JOINT**

Drawing No.

**EL-SB-SZS-14**

System:

**EL-MSF  
 Stacbond**

Size:

**A4**

Scale:

**NTS**

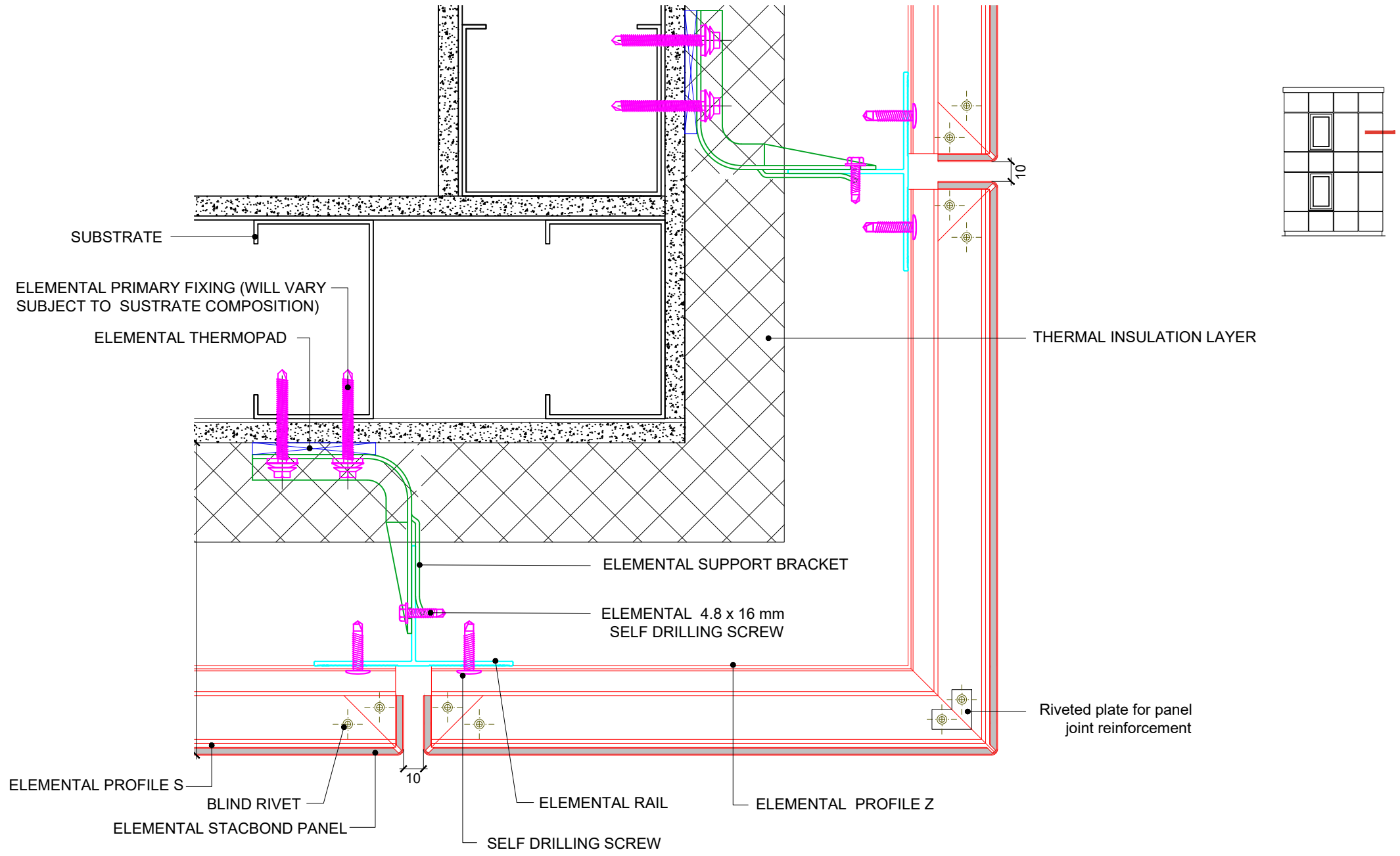
Drawn:


**V.C.**

Rev.

**01**

These drawings are indicative only, for use as a guide. The customer is always responsible for any specific design, structural calculations and calculating exact sizes & quantities of panels. Any project details and calculations supplied by Elemental Architectural Cladding Specialists are provided in good faith and should always be checked and approved by the project engineer responsible. Elemental Architectural Cladding Specialists will not accept any liability should the system be designed / installed incorrectly.

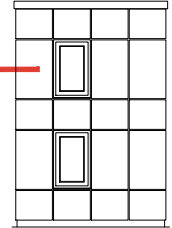
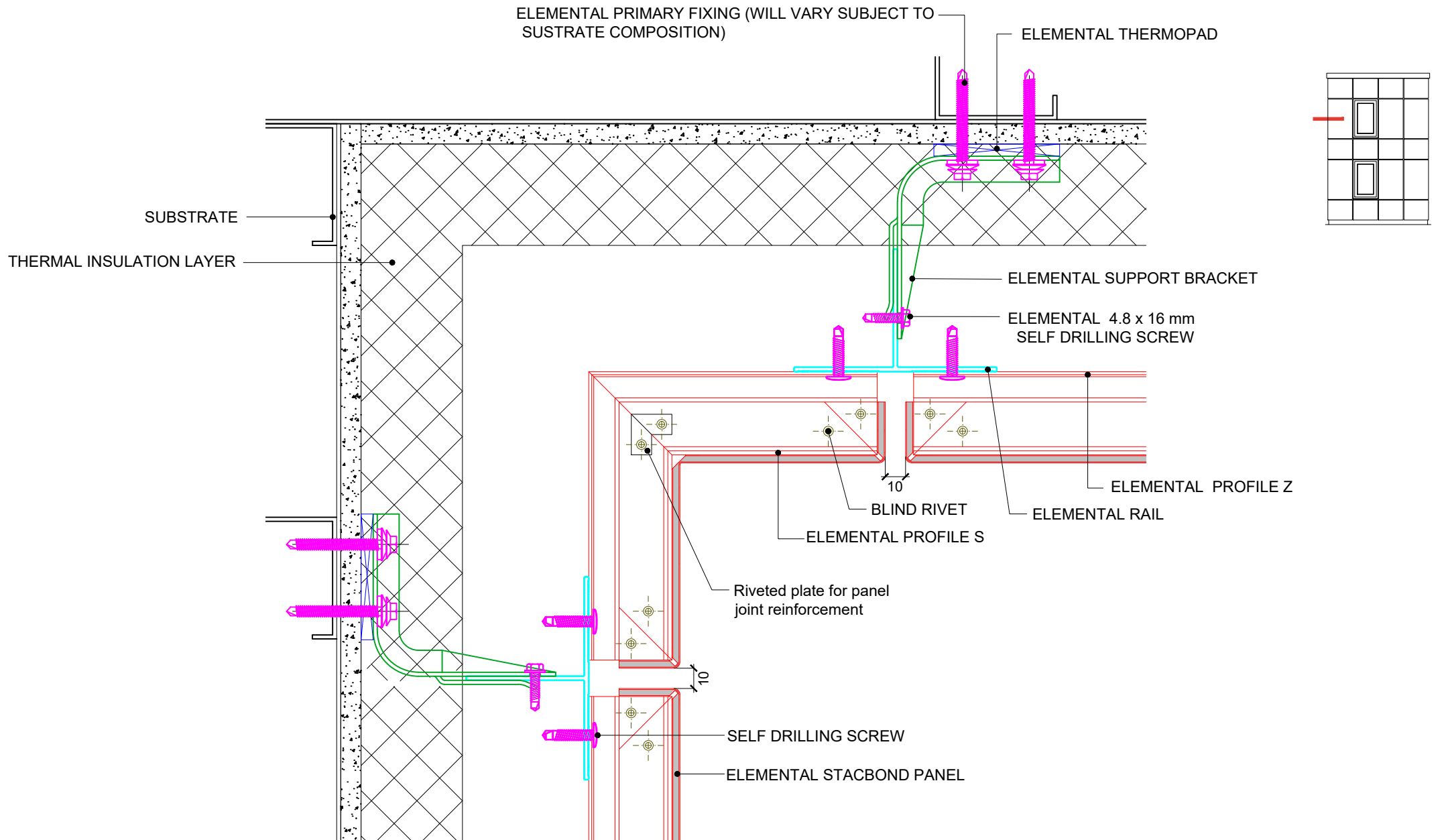


 <p><b>Elemental Architectural Cladding Specialists</b>          #29 The Cubes Offices, Beacon South Quarter,          Sandyford          Dublin 18, D18 A264          Phone: +353 (0)1 293 8951          Email: info@elemental.ie</p>	Drawing Title		<b>ELEMENTAL STACBOND - MSF EXTERNAL CORNER</b>									
	Drawing No.	EL-SB-SZS-15	System:	EL-MSF Stacbond	Size:	A4	Scale:	NTS	Drawn:	V.C.	Rev.	01

Elemental Architectural Cladding Specialists reserve the right to amend details at any time without prior notice. Reproduction or disclosure to third parties is strictly prohibited and can only be attained through signed, written consent from Elemental ACS.



These drawings are indicative only, for use as a guide. The customer is always responsible for any specific design, structural calculations and calculating exact sizes & quantities of panels. Any project details and calculations supplied by Elemental Architectural Cladding Specialists are provided in good faith and should always be checked and approved by the project engineer responsible. Elemental Architectural Cladding Specialists will not accept any liability should the system be designed / installed incorrectly.



**elemental**  
Architectural Cladding Specialists

**Elemental Architectural Cladding Specialists**  
#29 The Cubes Offices, Beacon South Quarter,  
Sandyford  
Dublin 18, D18 A264  
Phone: +353 (0)1 293 8951  
Email: info@elemental.ie

Drawing Title

**ELEMENTAL STACBOND - MSF  
INTERNAL CORNER**

Drawing No.

**EL-SB-SZS-16**

System:

**EL-MSF  
Stacbond**

Size:

**A4**

Scale:

**NTS**

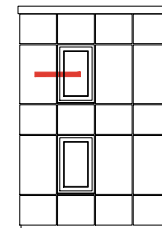
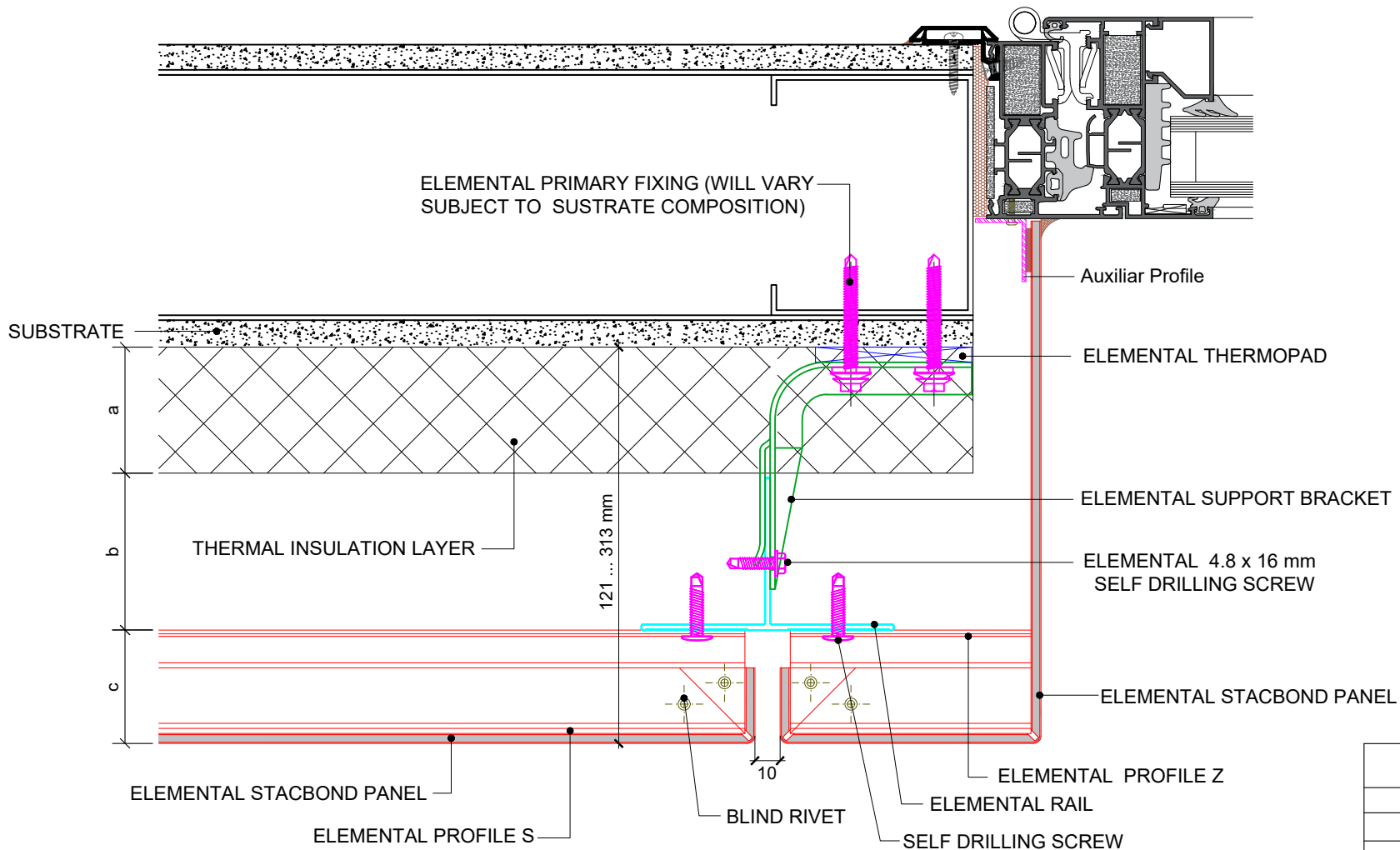
Drawn:

**V.C.**

Rev.

**01**

These drawings are indicative only, for use as a guide. The customer is always responsible for any specific design, structural calculations and calculating exact sizes & quantities of panels. Any project details and calculations supplied by Elemental Architectural Cladding Specialists are provided in good faith and should always be checked and approved by the project engineer responsible. Elemental Architectural Cladding Specialists will not accept any liability should the system be designed / installed incorrectly.



Dimensions	
a	Insulation thickness (varies)
b	Free vertical ventilation gap
c	Height of the facade cladding
a+b	Clad Zone



**Elemental Architectural Cladding Specialists**  
 #29 The Cubes Offices, Beacon South Quarter,  
 Sandyford  
 Dublin 18, D18 A264  
 Phone: +353 (0)1 293 8951  
 Email: info@elemental.ie

Drawing Title

**ELEMENTAL STACBOND - MSF  
 WINDOW REVEAL OPTION 1**

Drawing No.

**EL-SB-SZS-17**

System:

**EL-MSF  
 Stacbond**

Size:

**A4**

Scale:

**NTS**

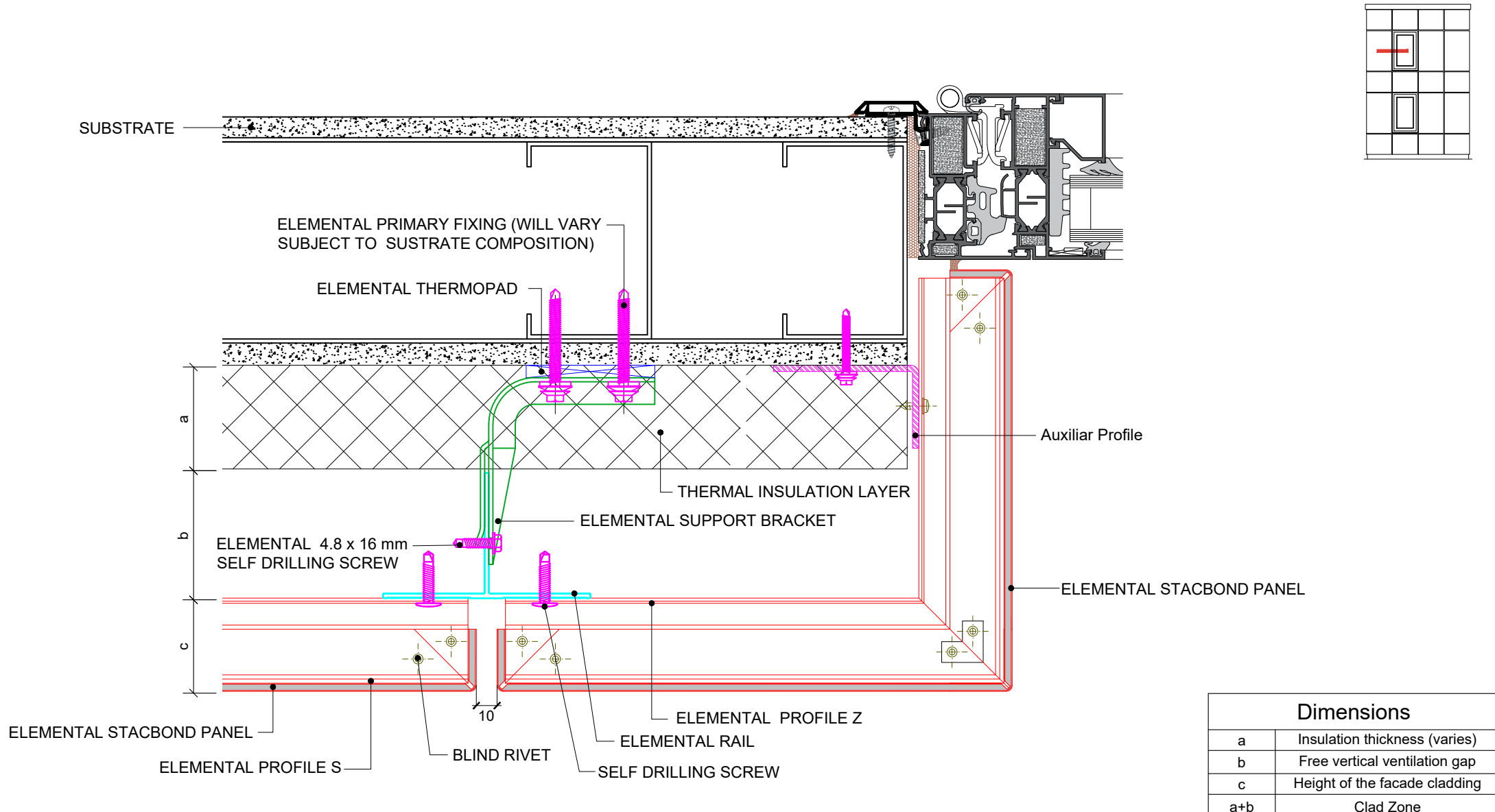
Drawn:

**V.C.**

Rev.

**01**

These drawings are indicative only, for use as a guide. The customer is always responsible for any specific design, structural calculations and calculating exact sizes & quantities of panels. Any project details and calculations supplied by Elemental Architectural Cladding Specialists are provided in good faith and should always be checked and approved by the project engineer responsible. Elemental Architectural Cladding Specialists will not accept any liability should the system be designed / installed incorrectly.



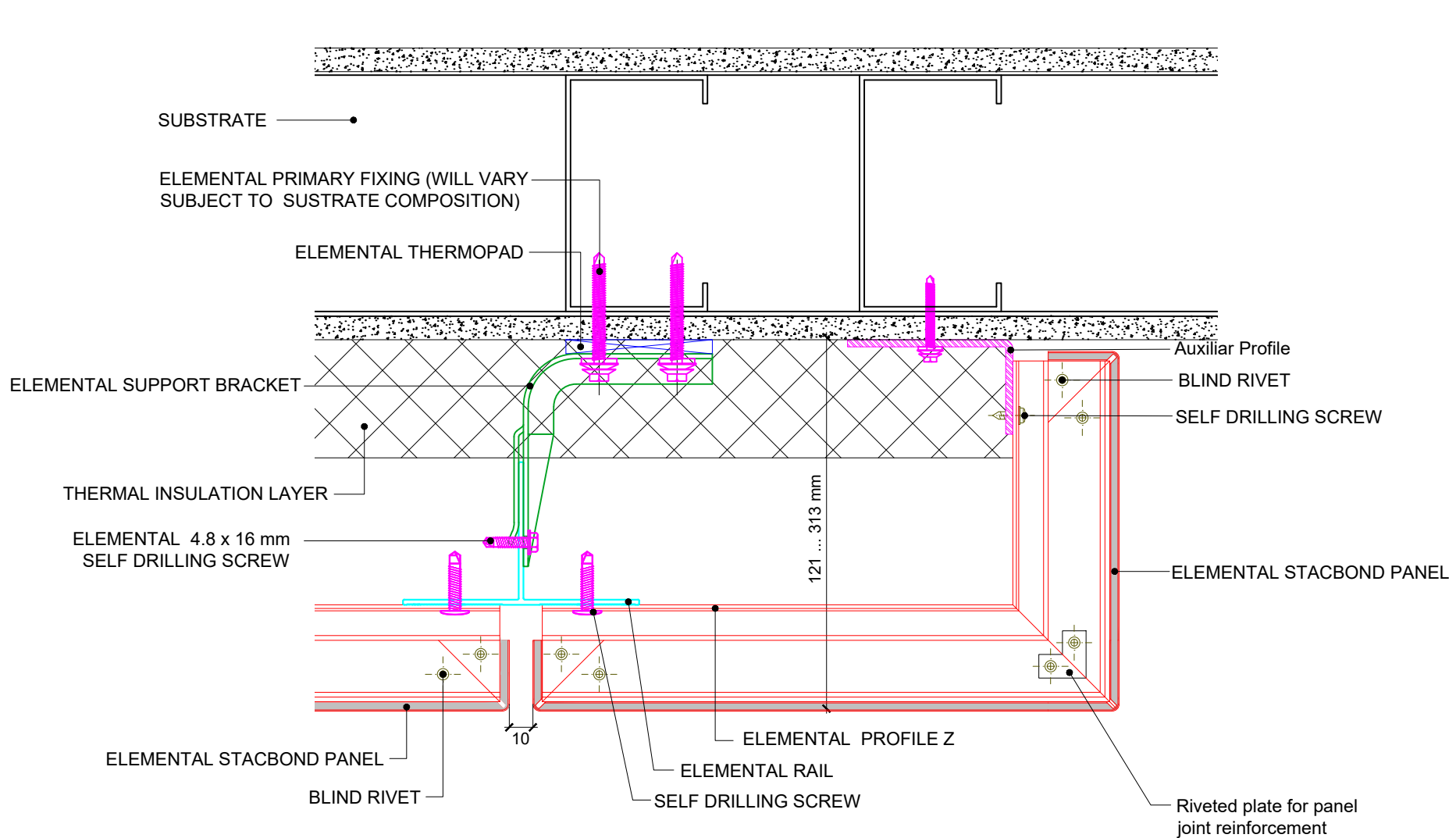
Dimensions	
a	Insulation thickness (varies)
b	Free vertical ventilation gap
c	Height of the facade cladding
a+b	Clad Zone

**Elemental Architectural Cladding Specialists**  
 #29 The Cubes Offices, Beacon South Quarter,  
 Sandyford  
 Dublin 18, D18 A264  
 Phone: +353 (0)1 293 8951  
 Email: info@elemental.ie

Drawing Title	ELEMENTAL STACBOND - MSF WINDOW REVEAL OPTION 2										
Drawing No.	EL-SB-SZS-18	System:	EL-MSF Stacbond	Size:	A4	Scale:	NTS	Drawn:	V.C.	Rev.	01

Elemental Architectural Cladding Specialists reserve the right to amend details at any time without prior notice. Reproduction or disclosure to third parties is strictly prohibited and can only be attained through signed, written consent from Elemental ACS.

These drawings are indicative only, for use as a guide. The customer is always responsible for any specific design, structural calculations and calculating exact sizes & quantities of panels. Any project details and calculations supplied by Elemental Architectural Cladding Specialists are provided in good faith and should always be checked and approved by the project engineer responsible. Elemental Architectural Cladding Specialists will not accept any liability should the system be designed / installed incorrectly.



**Elemental Architectural Cladding Specialists**  
 #29 The Cubes Offices, Beacon South Quarter,  
 Sandyford  
 Dublin 18, D18 A264  
 Phone: +353 (0)1 293 8951  
 Email: info@elemental.ie

Drawing Title

**ELEMENTAL STACBOND - MSF  
 LATERAL CLADDING END**

Drawing No.

**EL-SB-SZS-19**

System:

**EL-MSF  
 Stacbond**

Size:

**A4**

Scale:

**NTS**

Drawn:

**V.C.**

Rev.

**01**