

Facade System

Ventilated facade **EL-CB-MHU**

Elemental-Concrete Bracket- MSF Vertical ULMA

ULMA, Polymer Concrete

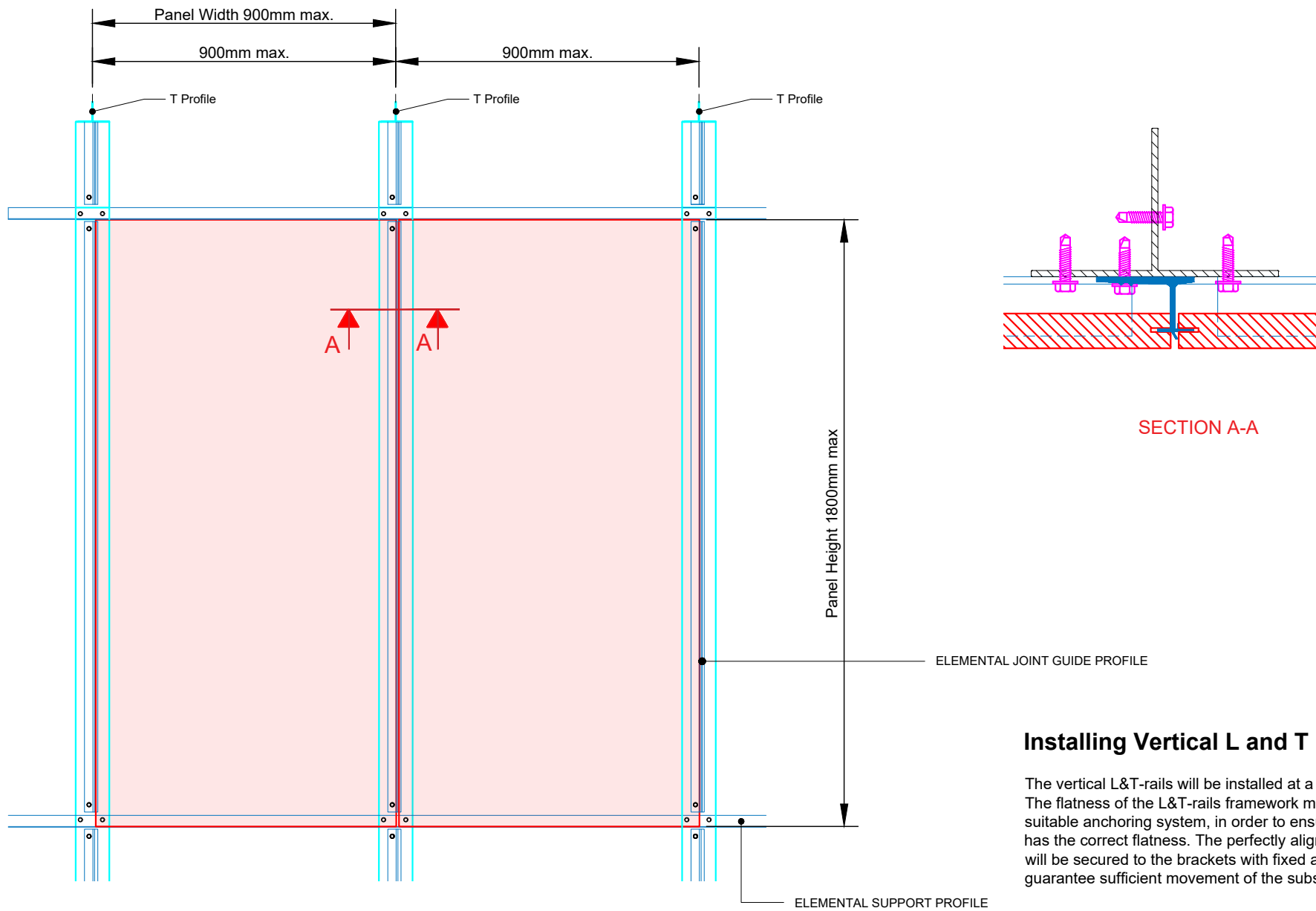
Mechanical Secret Fix onto 2-layer

Metal substructure

Contents:

EL-CB-MVU01	SYSTEM LAYOUT
EL-CB-MVU02	BRACKET TYPES AVAILABLE
EL-CB-MVU03	BASE DETAIL
EL-CB-MVU04	HORIZONTAL PANEL JOINT DETAIL
EL-CB-MVU05	VERTICAL PANEL JOINT DETAIL
EL-CB-MVU06	GAP JOINT BETWEEN SUPPORT PROFILE
EL-CB-MVU07	BUILDING STRUCTURAL MOVEMENT JOINT
EL-CB-MVU08	EXTERNAL CORNER - PROFILES DETAILS
EL-CB-MVU09	EXTERNAL CORNER - OPEN CORNER OPTION
EL-CB-MVU10	GENERIC PARAPET DETAIL
EL-CB-MVU11	WINDOW CILL DETAIL
EL-CB-MVU12	WINDOW HEAD DETAIL
EL-CB-MVU13	WINDOW JAMB REVEAL DETAIL

These drawings are indicative only, for use as a guide. The customer is always responsible for any specific design, structural calculations and calculating exact sizes & quantities of panels. Any project details and calculations supplied by Elemental Architectural Cladding Specialists are provided in good faith and should always be checked and approved by the project engineer responsible. Elemental Architectural Cladding Specialists will not accept any liability should the system be designed / installed incorrectly.



Installing Vertical L and T Rails

The vertical L&T-rails will be installed at a maximum distance of 90 cm. The flatness of the L&T-rails framework must be guaranteed using a suitable anchoring system, in order to ensure that the cladding system has the correct flatness. The perfectly aligned and plumbed L&T-rails will be secured to the brackets with fixed and slotted holes, so they guarantee sufficient movement of the substructure.



Elemental Architectural Cladding Specialists
 #29 The Cubes Offices, Beacon South Quarter,
 Sandyford
 Dublin 18, D18 A264
 Phone: +353 (0)1 293 8951
 Email: info@elemental.ie

Drawing Title

**ELEMENTAL ULMA - MSF - HORIZONTAL SYSTEM
 SYSTEM LAYOUT**

Drawing No.

EL-CB-MVU01

System:

**EL-MSF
 ULMA**

Size:

A4

Scale:

NTS

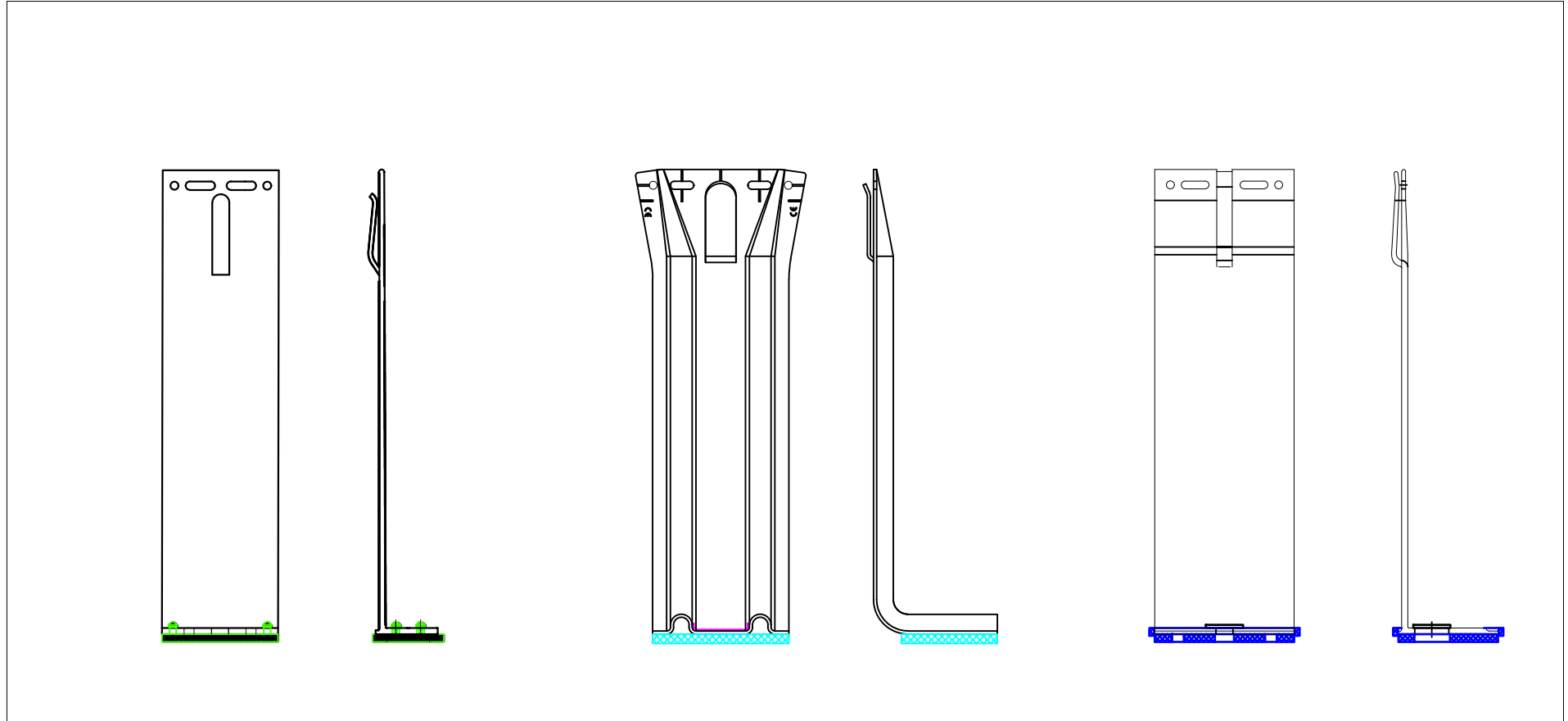
Drawn:

V.C.

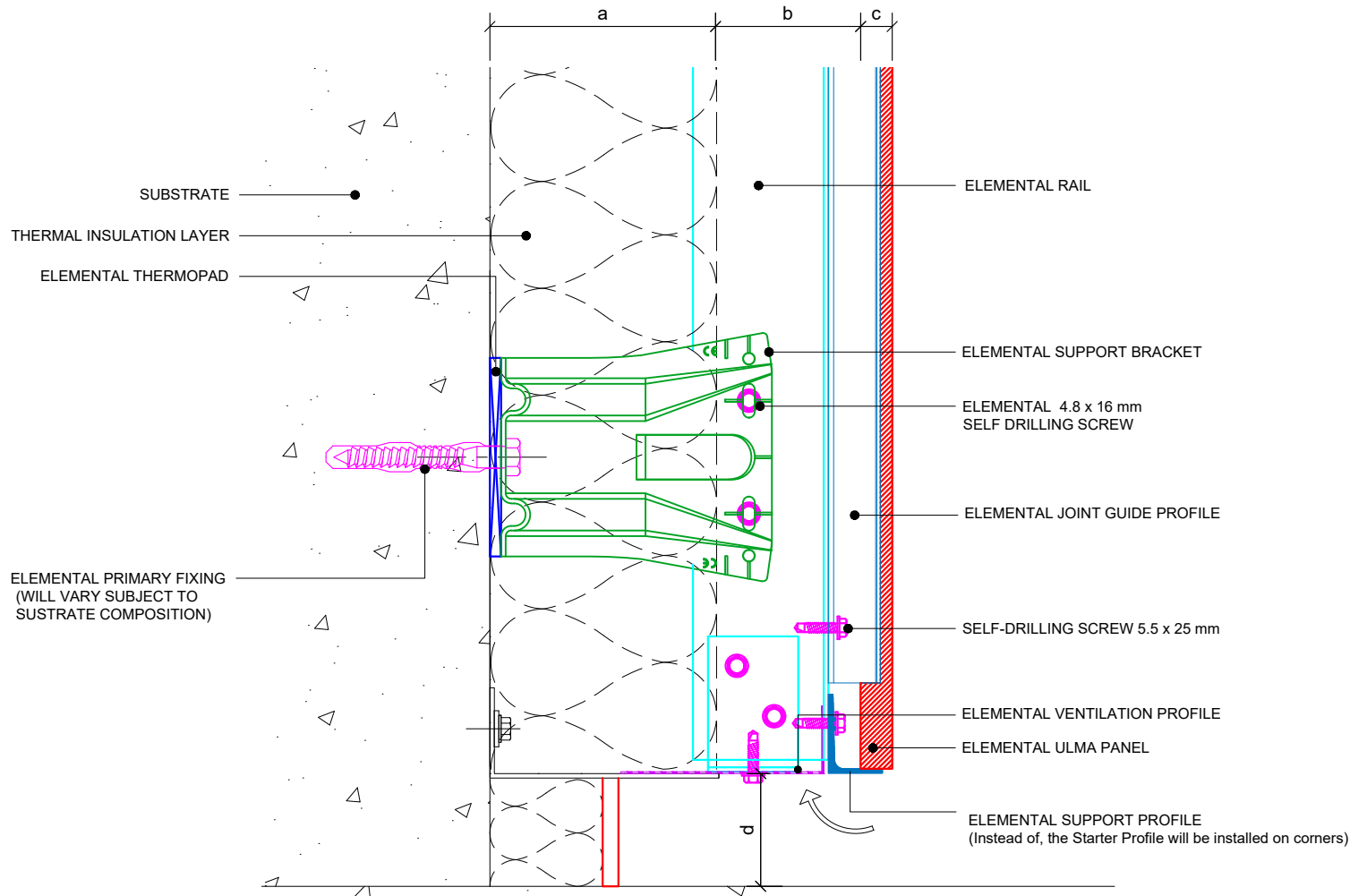
Rev.

01

BRACKET TYPES AVAILABLE FROM ELEMENTAL



These drawings are indicative only, for use as a guide. The customer is always responsible for any specific design, structural calculations and calculating exact sizes & quantities of panels. Any project details and calculations supplied by Elemental Architectural Cladding Specialists are provided in good faith and should always be checked and approved by the project engineer responsible. Elemental Architectural Cladding Specialists will not accept any liability should the system be designed / installed incorrectly.



Dimensions	
a	Insulation thickness (varies)
b	Free vertical ventilation gap
c	Panel nominal thickness
d	Base distance - Minimum 50mm
a+b	Clad Zone



elemental
Architectural Cladding Specialists

Elemental Architectural Cladding Specialists
#29 The Cubes Offices, Beacon South Quarter,
Sandyford
Dublin 18, D18 A264
Phone: +353 (0)1 293 8951
Email: info@elemental.ie

Drawing Title

**ELEMENTAL ULMA - MSF - VERTICAL SYSTEM
BASE DETAIL**

Drawing No.

EL-CB-MVU03

System:

**EL-MSF
ULMA**

Size:

A4

Scale:

NTS

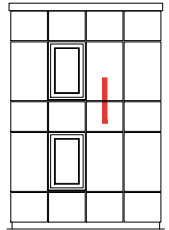
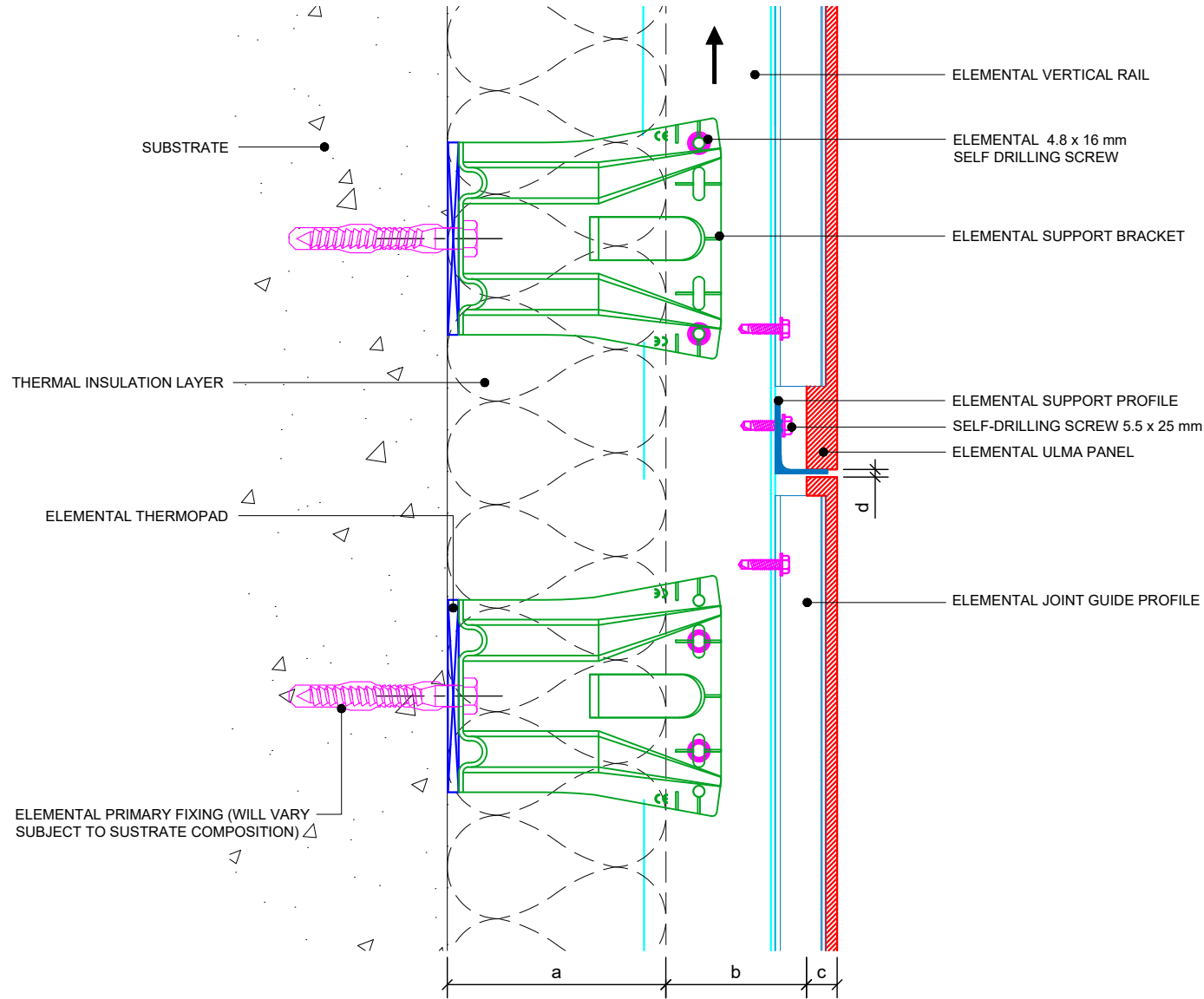
Drawn:

V.C.

Rev.

01

These drawings are indicative only, for use as a guide. The customer is always responsible for any specific design, structural calculations and calculating exact sizes & quantities of panels. Any project details and calculations supplied by Elemental Architectural Cladding Specialists are provided in good faith and should always be checked and approved by the project engineer responsible. Elemental Architectural Cladding Specialists will not accept any liability should the system be designed / installed incorrectly.



Dimensions	
a	Insulation thickness (varies)
b	Free vertical ventilation gap
c	Panel nominal thickness
d	Panel Joint - 3mm
a+b	Clad Zone



Elemental Architectural Cladding Specialists
 #29 The Cubes Offices, Beacon South Quarter,
 Sandyford
 Dublin 18, D18 A264
 Phone: +353 (0)1 293 8951
 Email: info@elemental.ie

Drawing Title

**ELEMENTAL ULMA - MSF - VERTICAL SYSTEM
 HORIZONTAL PANEL JOINT DETAIL**

Drawing No.

EL-CB-MVU04

System:

**EL-MSF
 ULMA**

Size:

A4

Scale:

NTS

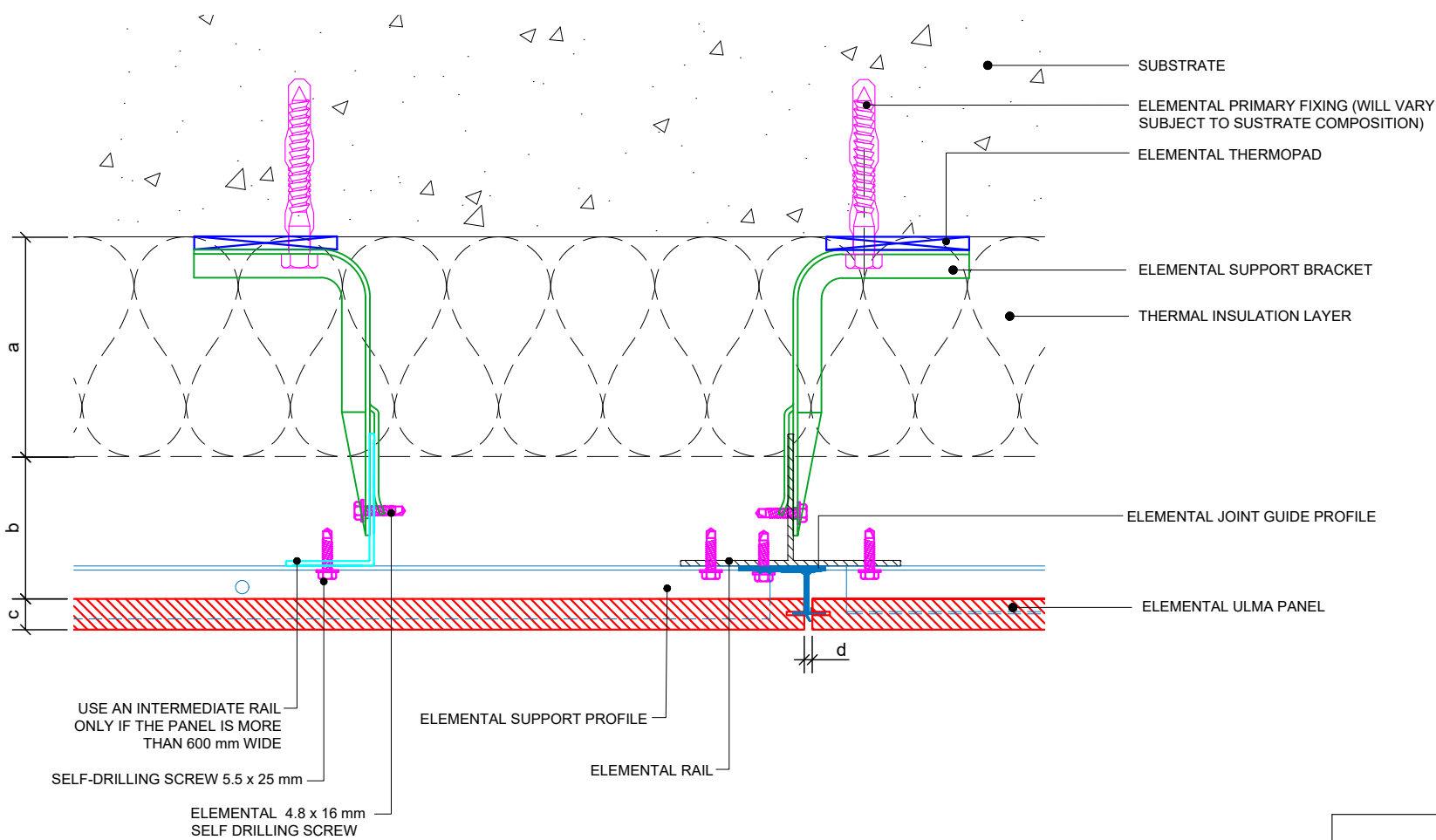
Drawn:

V.C.

Rev.

01

These drawings are indicative only, for use as a guide. The customer is always responsible for any specific design, structural calculations and calculating exact sizes & quantities of panels. Any project details and calculations supplied by Elemental Architectural Cladding Specialists are provided in good faith and should always be checked and approved by the project engineer responsible. Elemental Architectural Cladding Specialists will not accept any liability should the system be designed / installed incorrectly.



Dimensions	
a	Insulation thickness (varies)
b	Free vertical ventilation gap
c	Panel nominal thickness
d	Panel Joint - 3.5mm
a+b	Clad Zone



Elemental Architectural Cladding Specialists
 #29 The Cubes Offices, Beacon South Quarter,
 Sandyford
 Dublin 18, D18 A264
 Phone: +353 (0)1 293 8951
 Email: info@elemental.ie

Drawing Title

**ELEMENTAL ULMA - MSF- VERTICAL SYSTEM
 VERTICAL PANEL JOINT DETAIL**

Drawing No.

EL-CB-MVU05

System:

**EL-MSF
 ULMA**

Size:

A4

Scale:

NTS

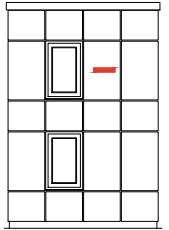
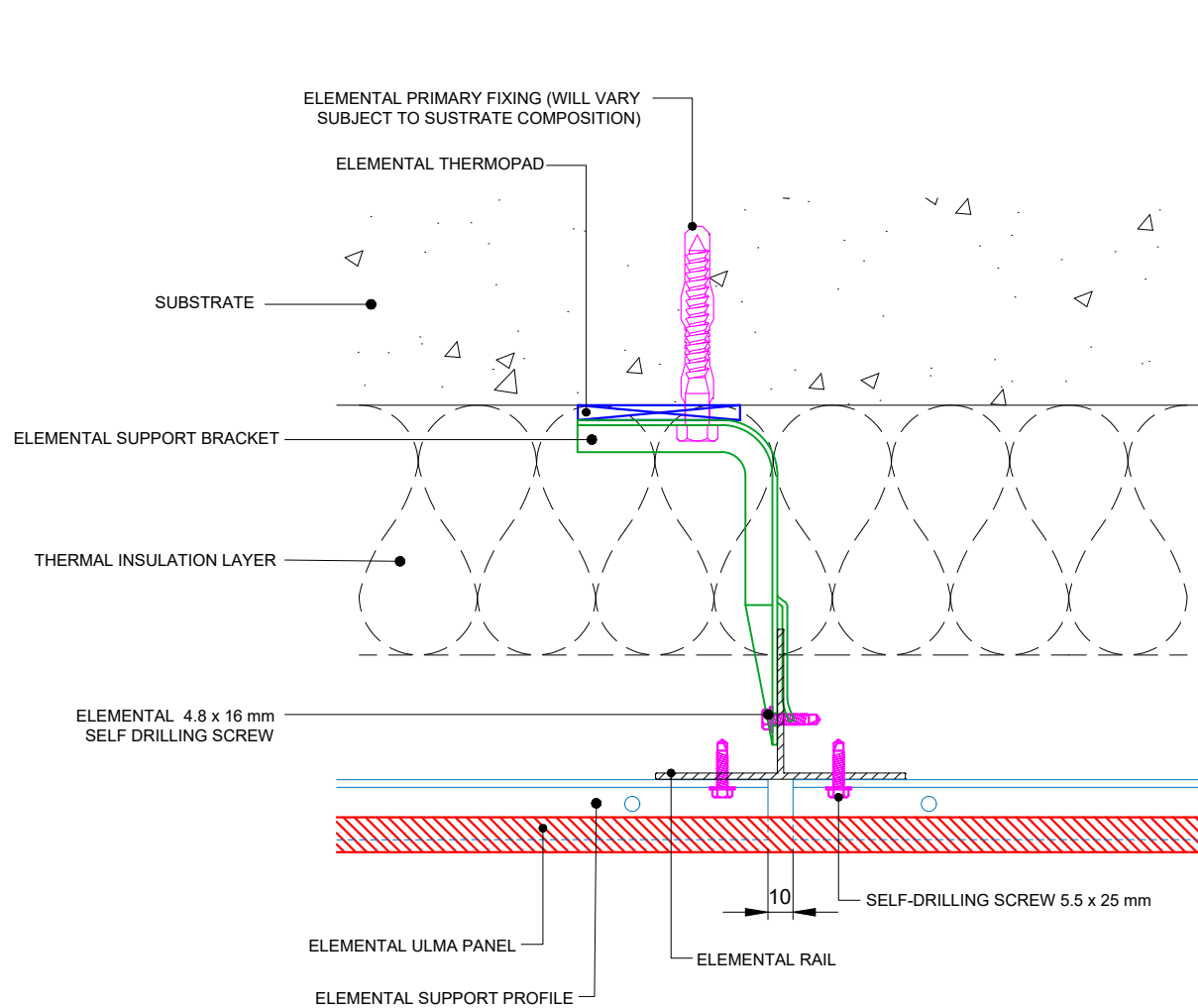
Drawn:

V.C.

Rev.

01

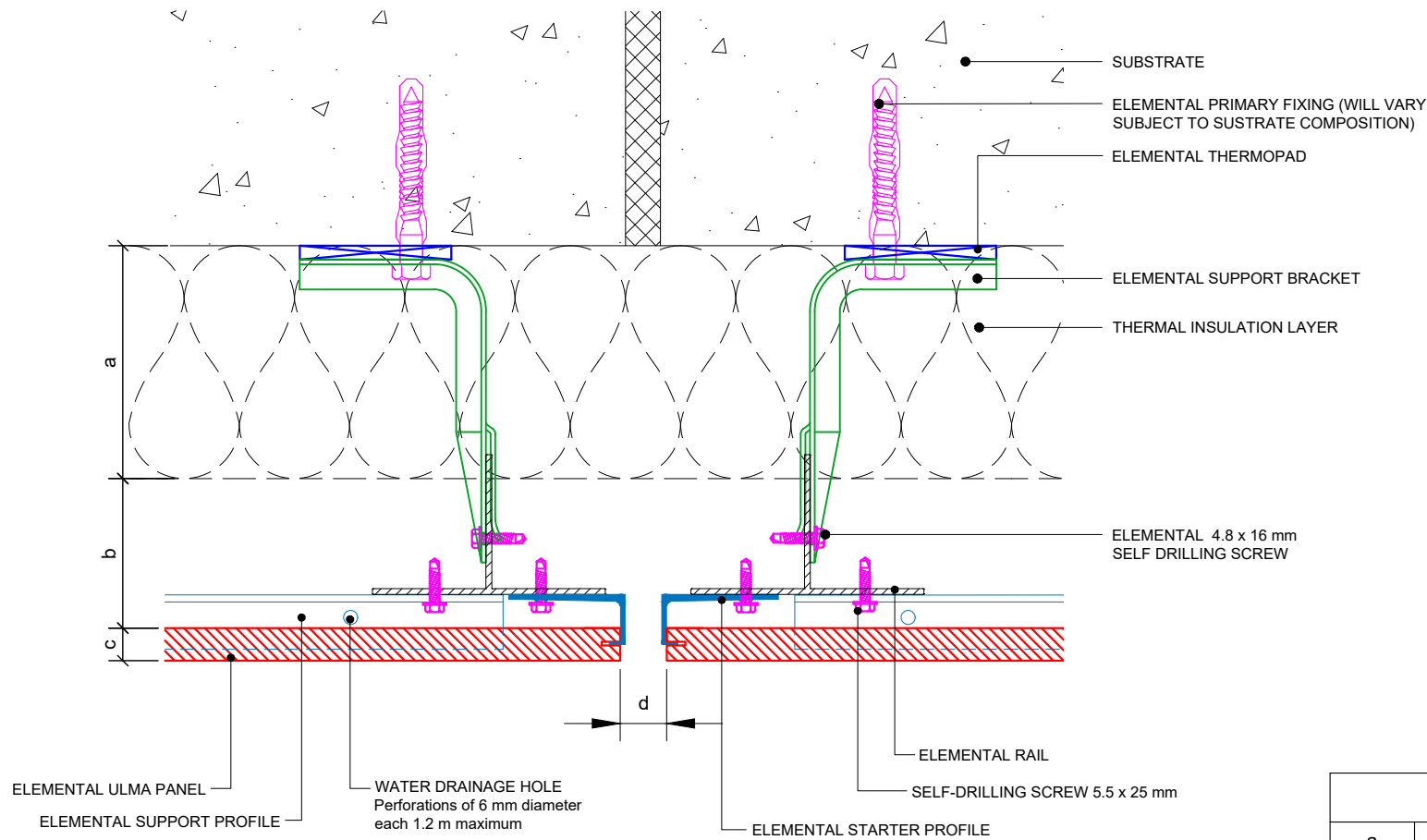
These drawings are indicative only, for use as a guide. The customer is always responsible for any specific design, structural calculations and calculating exact sizes & quantities of panels. Any project details and calculations supplied by Elemental Architectural Cladding Specialists are provided in good faith and should always be checked and approved by the project engineer responsible. Elemental Architectural Cladding Specialists will not accept any liability should the system be designed / installed incorrectly.



Elemental Architectural Cladding Specialists
 #29 The Cubes Offices, Beacon South Quarter,
 Sandyford
 Dublin 18, D18 A264
 Phone: +353 (0)1 293 8951
 Email: info@elemental.ie

Drawing Title	ELEMENTAL ULMA - MSF- VERTICAL SYSTEM GAP JOINT BETWEEN SUPPORT PROFILE										
Drawing No.	EL-CB-MVU06	System:	EL-MSF ULMA	Size:	A4	Scale:	NTS	Drawn:	V.C.	Rev.	01

These drawings are indicative only, for use as a guide. The customer is always responsible for any specific design, structural calculations and calculating exact sizes & quantities of panels. Any project details and calculations supplied by Elemental Architectural Cladding Specialists are provided in good faith and should always be checked and approved by the project engineer responsible. Elemental Architectural Cladding Specialists will not accept any liability should the system be designed / installed incorrectly.



Dimensions	
a	Insulation thickness (varies)
b	Free vertical ventilation gap
c	Panel nominal thickness
d	The Building's expansion joints must always coincide with a vertical joint on the ventilated facade (15 to 20 mm)
a+b	Clad Zone



Elemental Architectural Cladding Specialists
 #29 The Cubes Offices, Beacon South Quarter,
 Sandyford
 Dublin 18, D18 A264
 Phone: +353 (0)1 293 8951
 Email: info@elemental.ie

Drawing Title

**ELEMENTAL ULMA - MSF - VERTICAL SYSTEM
 BUILDING STRUCTURAL MOVEMENT JOINT**

Drawing No.

EL-CB-MVU07

System:

**EL-MSF
 ULMA**

Size:

A4

Scale:

NTS

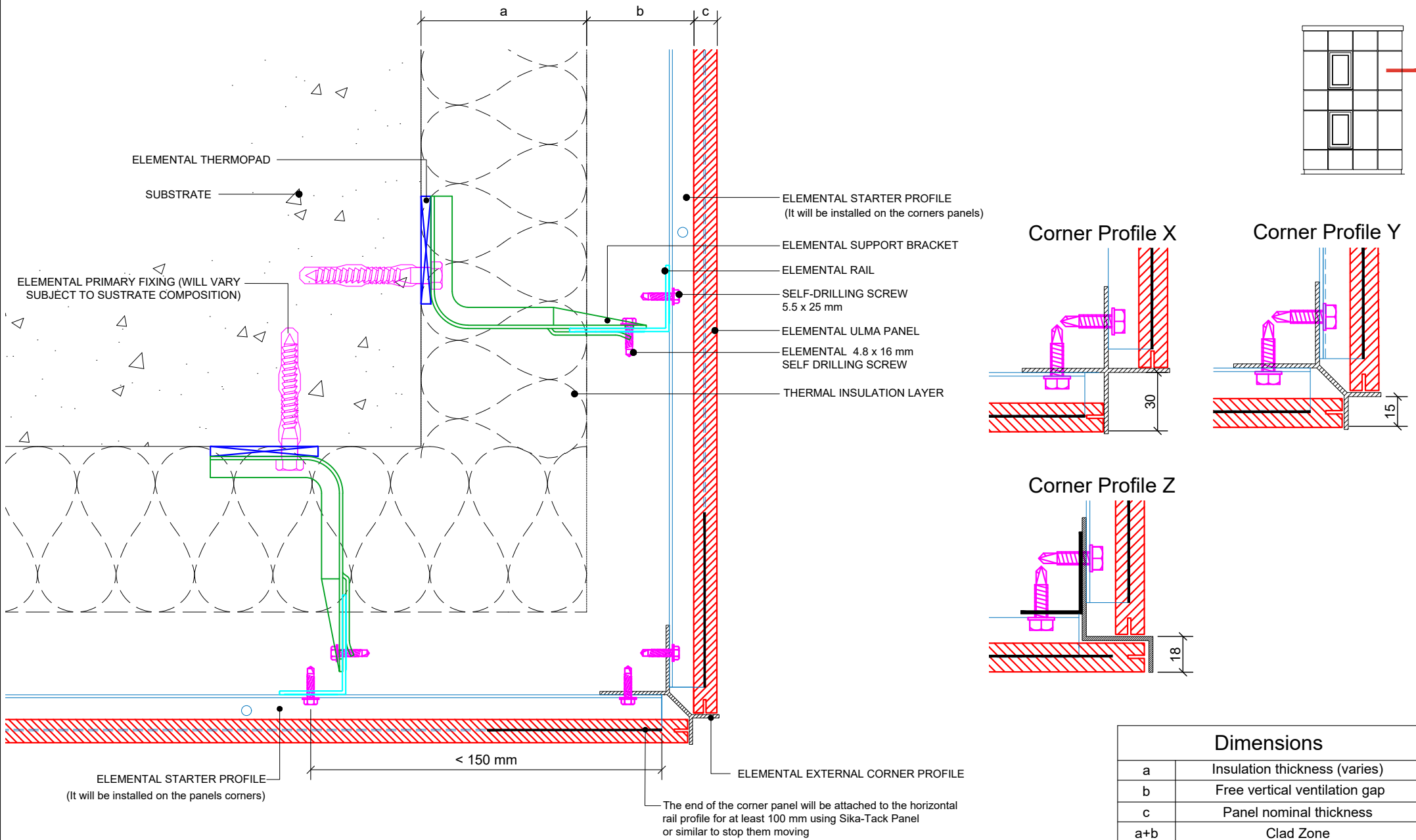
Drawn:

V.C.

Rev.

01

These drawings are indicative only, for use as a guide. The customer is always responsible for any specific design, structural calculations and calculating exact sizes & quantities of panels. Any project details and calculations supplied by Elemental Architectural Cladding Specialists are provided in good faith and should always be checked and approved by the project engineer responsible. Elemental Architectural Cladding Specialists will not accept any liability should the system be designed / installed incorrectly.

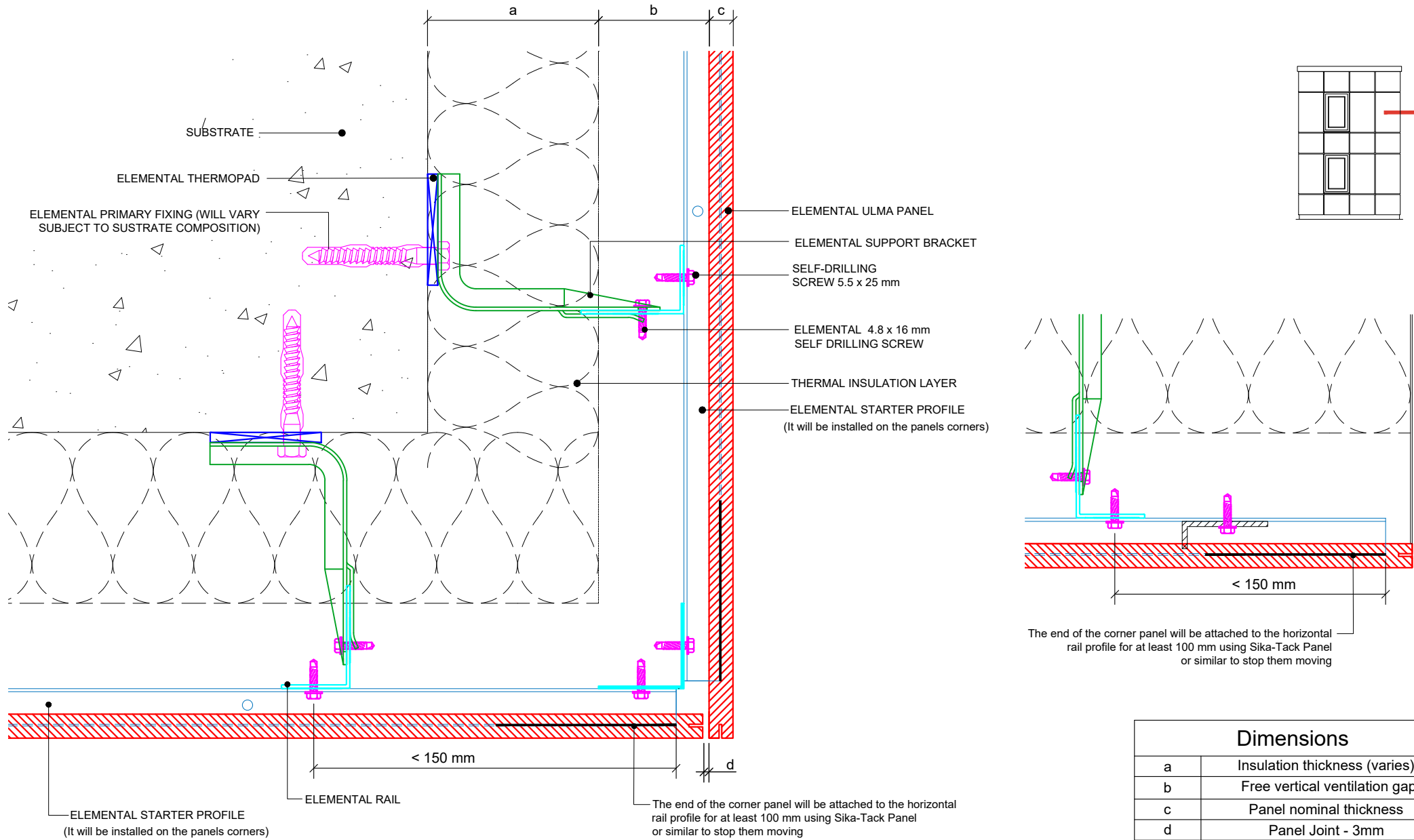


Dimensions	
a	Insulation thickness (varies)
b	Free vertical ventilation gap
c	Panel nominal thickness
a+b	Clad Zone

Elemental Architectural Cladding Specialists
 #29 The Cubes Offices, Beacon South Quarter,
 Sandyford
 Dublin 18, D18 A264
 Phone: +353 (0)1 293 8951
 Email: info@elemental.ie

Drawing Title	ELEMENTAL ULMA - MSF - VERTICAL SYSTEM EXTERNAL CORNER PROFILE DETAILS										
Drawing No.	EL-CB-MVU08	System:	EL-MSF ULMA	Size:	A4	Scale:	NTS	Drawn:	V.C.	Rev.	01

These drawings are indicative only, for use as a guide. The customer is always responsible for any specific design, structural calculations and calculating exact sizes & quantities of panels. Any project details and calculations supplied by Elemental Architectural Cladding Specialists are provided in good faith and should always be checked and approved by the project engineer responsible. Elemental Architectural Cladding Specialists will not accept any liability should the system be designed / installed incorrectly.



Dimensions	
a	Insulation thickness (varies)
b	Free vertical ventilation gap
c	Panel nominal thickness
d	Panel Joint - 3mm
a+b	Clad Zone

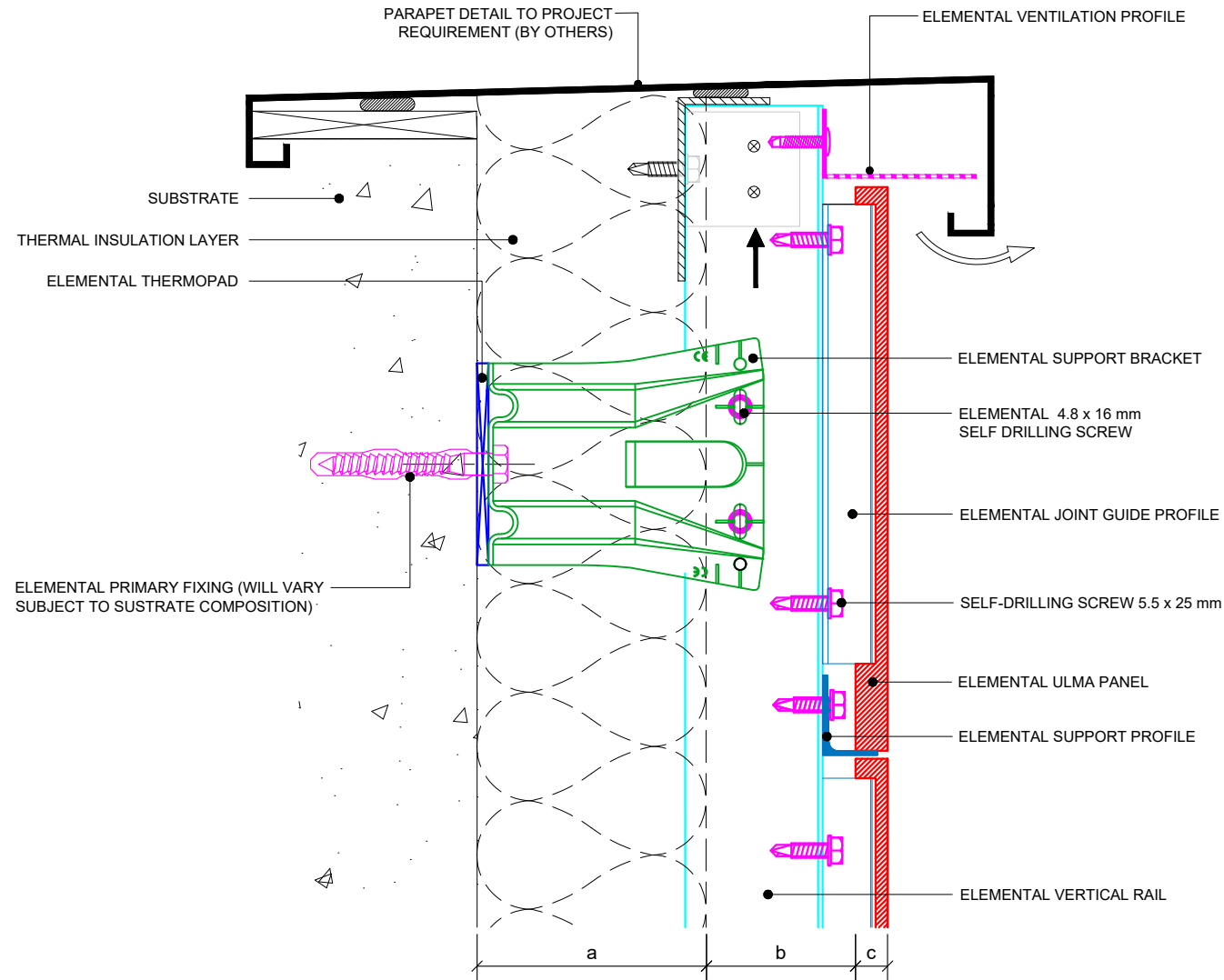


Elemental Architectural Cladding Specialists
 #29 The Cubes Offices, Beacon South Quarter,
 Sandyford
 Dublin 18, D18 A264
 Phone: +353 (0)1 293 8951
 Email: info@elemental.ie

Drawing Title		ELEMENTAL ULMA - MSF- VERTICAL SYSTEM EXTERNAL CORNER-OPEN CORNER OPTION									
Drawing No.	EL-CB-MVU09	System:	EL-MSF ULMA	Size:	A4	Scale:	NTS	Drawn:	V.C.	Rev.	01

Elemental Architectural Cladding Specialists reserve the right to amend details at any time without prior notice. Reproduction or disclosure to third parties is strictly prohibited and can only be attained through signed, written consent from Elemental ACS.

These drawings are indicative only, for use as a guide. The customer is always responsible for any specific design, structural calculations and calculating exact sizes & quantities of panels. Any project details and calculations supplied by Elemental Architectural Cladding Specialists are provided in good faith and should always be checked and approved by the project engineer responsible. Elemental Architectural Cladding Specialists will not accept any liability should the system be designed / installed incorrectly.



Dimensions	
a	Insulation thickness (varies)
b	Free vertical ventilation gap
c	Panel nominal thickness
a+b	Clad Zone



Elemental Architectural Cladding Specialists
 #29 The Cubes Offices, Beacon South Quarter,
 Sandyford
 Dublin 18, D18 A264
 Phone: +353 (0)1 293 8951
 Email: info@elemental.ie

Drawing Title

**ELEMENTAL ULMA - MSF - VERTICAL SYSTEM
 GENERIC PARAPET DETAIL**

Drawing No.

EL-CB-MVU10

System:

**EL-MSF
 ULMA**

Size:

A4

Scale:

NTS

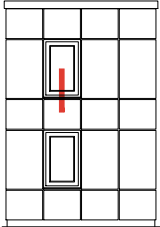
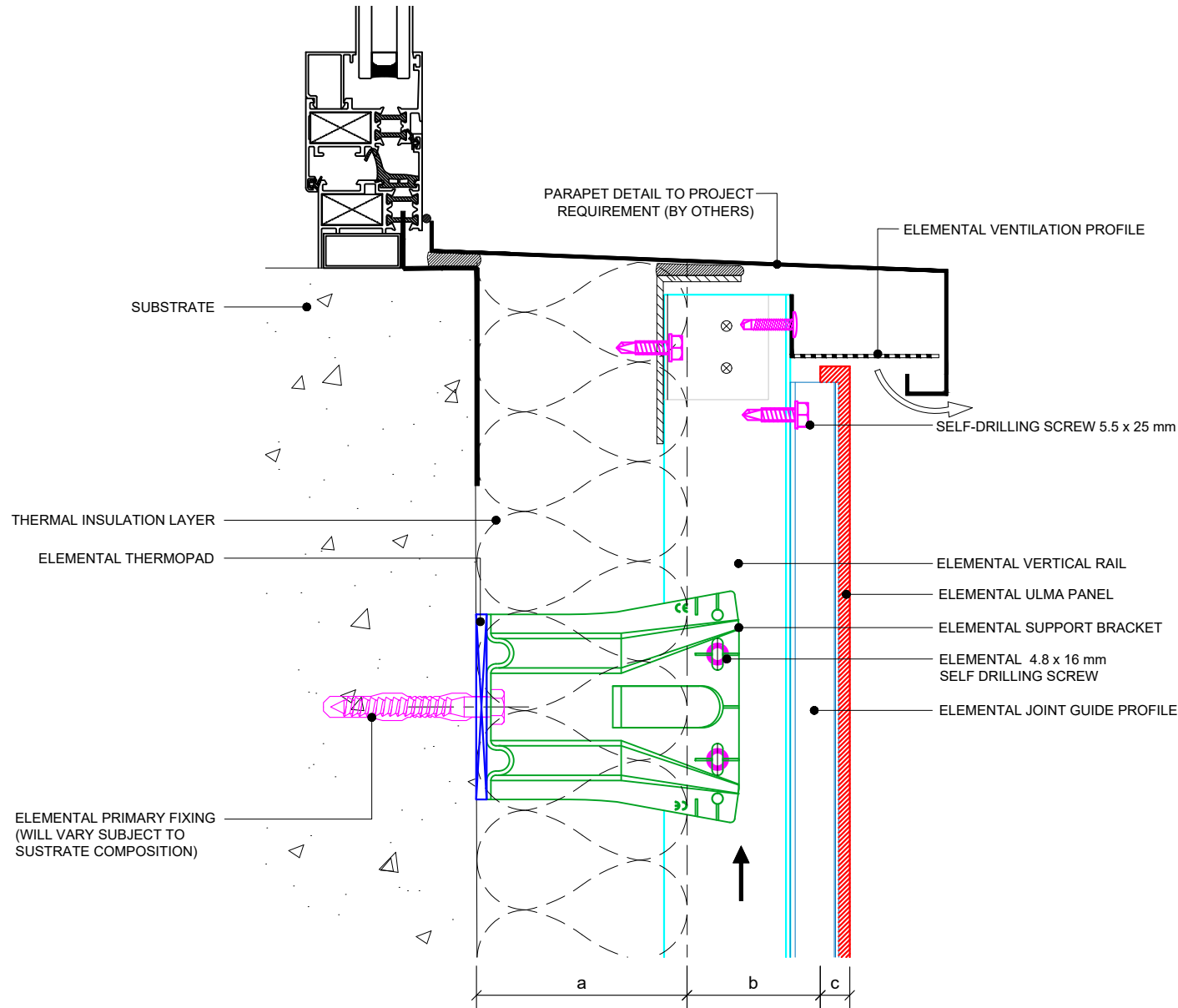
Drawn:

V.C.

Rev.

01

These drawings are indicative only, for use as a guide. The customer is always responsible for any specific design, structural calculations and calculating exact sizes & quantities of panels. Any project details and calculations supplied by Elemental Architectural Cladding Specialists are provided in good faith and should always be checked and approved by the project engineer responsible. Elemental Architectural Cladding Specialists will not accept any liability should the system be designed / installed incorrectly.



Dimensions	
a	Insulation thickness (varies)
b	Free vertical ventilation gap
c	Panel nominal thickness
a+b	Clad Zone



Elemental Architectural Cladding Specialists
 #29 The Cubes Offices, Beacon South Quarter,
 Sandyford
 Dublin 18, D18 A264
 Phone: +353 (0)1 293 8951
 Email: info@elemental.ie

Drawing Title

**ELEMENTAL ULMA - MSF - VERTICAL SYSTEM
 WINDOW CILL DETAIL**

Drawing No.

EL-CB-MVU11

System:

**EL-MSF
 ULMA**

Size:

A4

Scale:

NTS

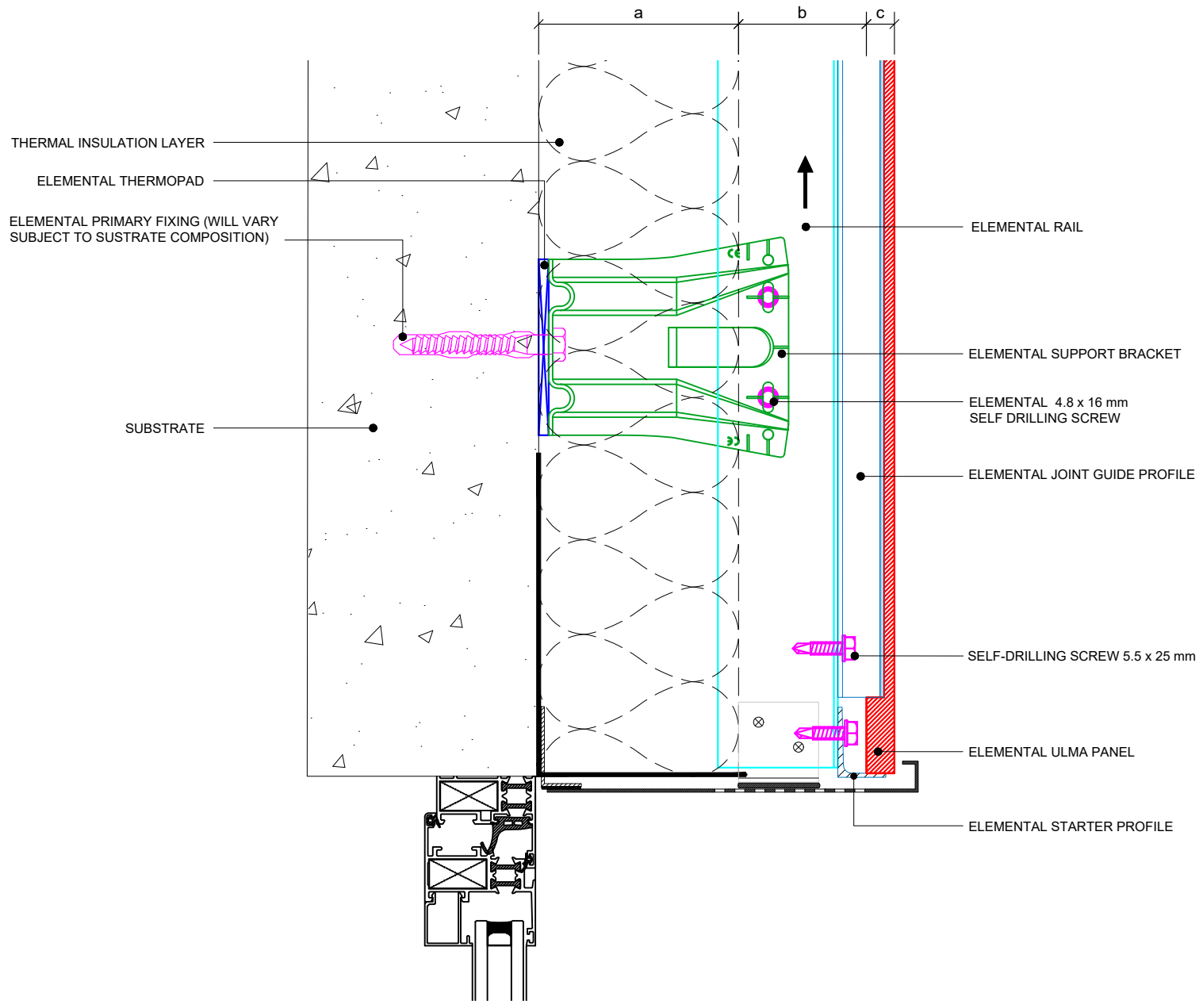
Drawn:

V.C.

Rev.

01

These drawings are indicative only, for use as a guide. The customer is always responsible for any specific design, structural calculations and calculating exact sizes & quantities of panels. Any project details and calculations supplied by Elemental Architectural Cladding Specialists are provided in good faith and should always be checked and approved by the project engineer responsible. Elemental Architectural Cladding Specialists will not accept any liability should the system be designed / installed incorrectly.

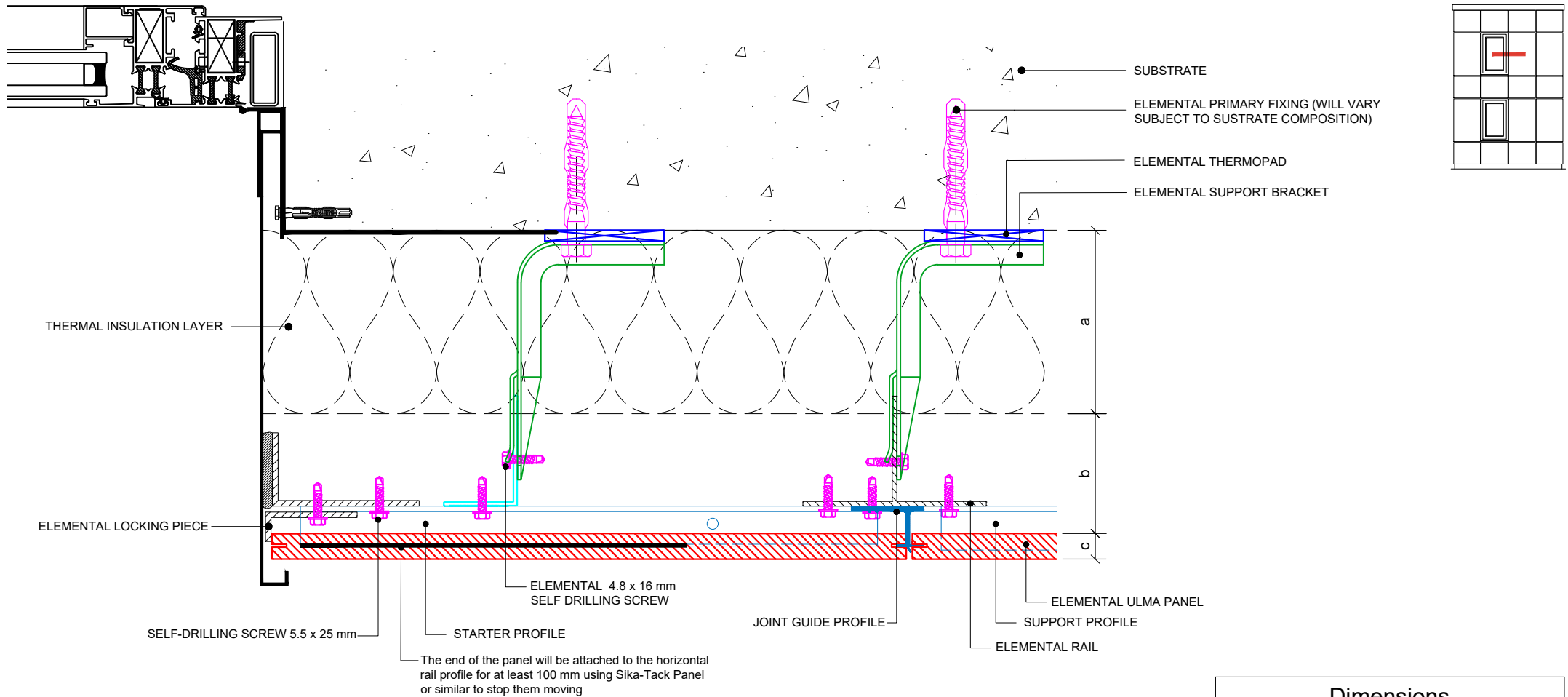


Dimensions	
a	Insulation thickness (varies)
b	Free vertical ventilation gap
c	Panel nominal thickness
a+b	Clad Zone


Elemental Architectural Cladding Specialists
 #29 The Cubes Offices, Beacon South Quarter,
 Sandyford
 Dublin 18, D18 A264
 Phone: +353 (0)1 293 8951
 Email: info@elemental.ie

Drawing Title	ELEMENTAL ULMA - MSF - VERTICAL SYSTEM WINDOW HEAD DETAIL										
Drawing No.	EL-CB-MVU12	System:	EL-MSF ULMA	Size:	A4	Scale:	NTS	Drawn:	V.C.	Rev.	01

These drawings are indicative only, for use as a guide. The customer is always responsible for any specific design, structural calculations and calculating exact sizes & quantities of panels. Any project details and calculations supplied by Elemental Architectural Cladding Specialists are provided in good faith and should always be checked and approved by the project engineer responsible. Elemental Architectural Cladding Specialists will not accept any liability should the system be designed / installed incorrectly.



Dimensions	
a	Insulation thickness (varies)
b	Free vertical ventilation gap
c	Panel nominal thickness
a+b	Clad Zone

 <p>Elemental Architectural Cladding Specialists #29 The Cubes Offices, Beacon South Quarter, Sandyford Dublin 18, D18 A264 Phone: +353 (0)1 293 8951 Email: info@elemental.ie</p>	Drawing Title	ELEMENTAL ULMA - MSF- VERTICAL SYSTEM WINDOW JAMB REVEAL DETAIL									
	Drawing No.	EL-CB-MVU13	System:	EL-MSF ULMA	Size:	A4	Scale:	NTS	Drawn:	V.C.	Rev.

Elemental Architectural Cladding Specialists reserve the right to amend details at any time without prior notice. Reproduction or disclosure to third parties is strictly prohibited and can only be attained through signed, written consent from Elemental ACS.