

FUNDERMAX®



m.look



elemental
Architectural Cladding Specialists

**a new dimension
for creativity**

Release July 2016

m.look

**for
people
who
create**



m.look

m.look opens a door into a world full of visual highlights and contemporary architecture. A fire resistant material with a reaction to fire classification **A2 – s1, d0** in accordance with **EN 13501-1** for unlimited architectural ideas and any building height.



elemental
Architectural Cladding Specialists



New freedom for creativity

FunderMax products stand out through their high quality, cutting-edge production and pioneering designs that perfectly capture the taste of the times. The product range has been improved even further, with the creativity and the durability of the facade systems being completely revolutionized and raised to a new level. The result is called **m.look**.

The architecture is given new accents with **m.look**. Whether in public and high-traffic buildings or for monumental constructions and multi-dimensional structures, m.look makes design ideas possible and convincingly transfers creative designs into reality, even if this reality is more than 30 meters high. Where previously there was only a limited range of materials with a limited variety of styles available, **m.look** now opens up whole new visual worlds.

m.look is virtually impervious to weathering and harsh environmental conditions and skillfully combines style with the required safety. **m. look** is created to meet these challenges, setting out in striking new directions and making visionary solutions possible. m. look is perfect for any application requiring building material class A2-s1, d0 in accordance with EN 13501-1, successfully combining style with the utmost in safety.

Visible accents

First, the architectural concept exists only in the mind then it is sketched on paper and later designed on the screen, until it finally becomes a reality. The realization of amazing ideas requires materials of the highest quality that allow extreme freedom, even for unusual projects and buildings!

m.look is just what you need!

Through the combination of exciting new materials, innovative material developments and the proven FunderMax production technology, we have created a lightweight and very stable panel element. The slim and large-format panel design also allows for generous fixation distances.

Equipped with the patented and highly effective NT weather protection, the same technology that has been used in successful FunderMax products for many years now, **m.look** is easily able to withstand even the harshest weather and environments.





m.look Project: Mittelschule Liefering
Decor: 0792 Patina Grey Brown
Client: SIG
Installer: Strabag AG Thalgau
 Filzmaier GmbH
Architect: DI Johannes Schallhammer



A material that combines the best of two worlds

Airports, railway stations and other transport hubs give people orientation, safety and protection. The design of these buildings is an exciting challenge that requires ingenuity and experience. **m.look** look is created to meet these challenges, setting out in striking new directions and making visionary solutions possible.

Panel size

Length max. 3660 mm

Width max. 1630 mm

The panels are delivered cut to the desired dimensions.

Thicknesses for outdoor use

7 mm for exterior facade and ceiling applications

9 mm, 12 mm for balconies, railings and stairway balustrade panels

Thicknesses for indoor use

8 mm as an architectural wall panel system.

Special thicknesses in 7, 9, 10 and 12 mm are available upon request. Please consult FunderMax directly.

9 mm, 12 mm for balconies, railings and stairway balustrade panels.

Special applications upon request.

Surface for outdoor applications NT

Surface for indoor applications FH

Physical properties

Specific gravity 1.9 g/cm³

Fulfills the requirements in accordance with EN 438 (outdoor use) for: climate resistance, UV and weather resistance and surface resistance. You can find more technical information in the brochure «**m.look** Technical Information».

Installation and machining (outdoor use)

Visibly riveted or screwed to a metal substructure with a mounting distance of up to 800 mm / 800 mm

Like with the compact panels, machining requires diamond-tipped tools

Physical characteristics

Fire behaviour **A2-s1, d0 acc. to EN 13501-1**

Please be certain to observe the applicable building regulations.





elemental
Architectural Cladding Specialists

m.look range of decors

m.look is available in a large variety of colors and patterns that create new possibilities for a wide range of applications and skillfully transfer creative designs into reality.

Architecture means offering perspectives and making a powerful impression on public perception. **m.look** draws upon a wide color spectrum to express the messages of the architecture in an independent, unrepeatable form, unique in the building material class A2-s1, d0.



Vintage Wood



Polar Oak, 5171



Marshland Oak, 5172



Barrique Oak, 5173

Natural Wood



Walnut Tirano, 0797



Tyrol Pine, 0803



Natural Oak, 0125

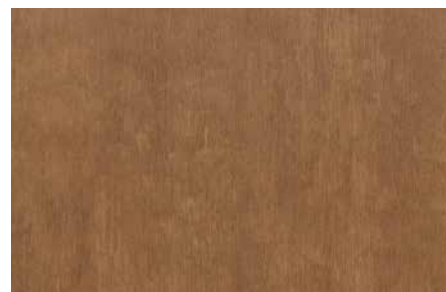
African Landscape



Afro Black, 0159



Afro Grey, 0158

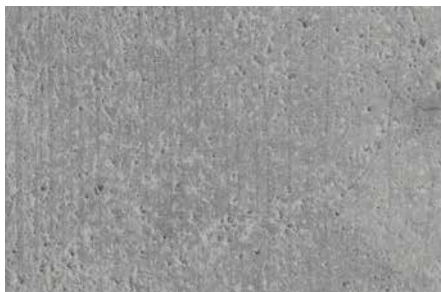


Light Afro, 0161

Solid Impact



Yellowstone, 5150



Concrete Wall, 5151



Black Slate, 5152

Vintage Metallic



Patina Grey Brown, 0792



Afro Patina, 0156

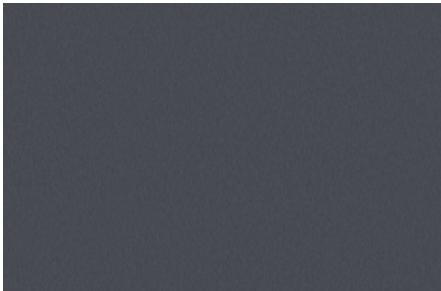


Tambora, 0798

Modern Metallic



Brushed Aluminium, 0328



Brushed Navy, 0330



elemental
Architectural Cladding Specialists

Vintage Wood

- 5171 Polar Oak
- 5172 Marshland Oak
- 5173 Barrique Oak



Walnut Tirano, 0797

The fine structures attract the eye
and create a focal point in pure culture.



Tyrol Pine, 0803

As beautiful as wood can be!
The natural «forest» experience in all its dimensions.



Natural Oak, 0125

A work of art from the wealth of nature
that you are sure to love.



Natural Wood

0797 Walnut Tirano
0803 Tyrol Pine
0125 Natural Oak

African Landscape

0159 Afro Black
0158 Afro Grey
0161 Light Afro



Afro Black, 0159

The powerful presence with a mysterious dark shimmer.



Afro Grey, 0158

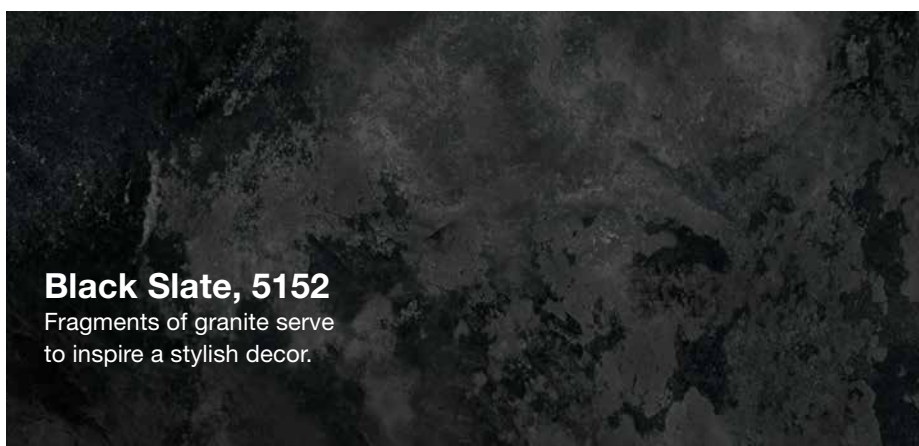
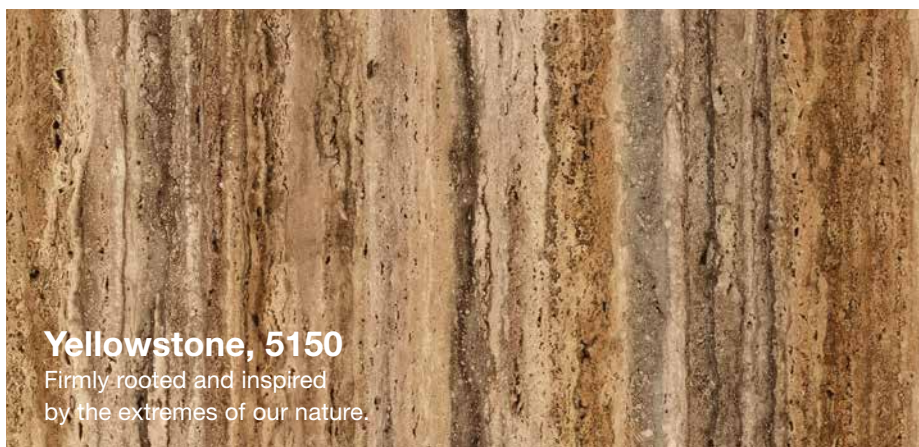
A creation of clouds, plains and wind.



Light Afro, 0161

The design in the look of hot desert sand allows the viewer to feel the distance.






Solid Impact

5150 Yellowstone
5151 Concrete Wall
5152 Black Slate

Vintage Metallic

0792 Patina Grey
0156 Afro Patina
0798 Tambora

A vertical rectangular panel with a dark, mottled brown and grey patina texture.

Patina Grey Brown, 0792

This design brings strength and style together.

A vertical rectangular panel with a teal-green patina texture that has a fine, sparkling grain.

Afro Patina, 0156

The perfect combination.
Strength and beauty combined
in a sparkle.

A vertical rectangular panel with a rich, textured patina in shades of deep red, orange, and brown.

Tambora, 0798

A composition of strong colors
that stand for maximum
commitment.



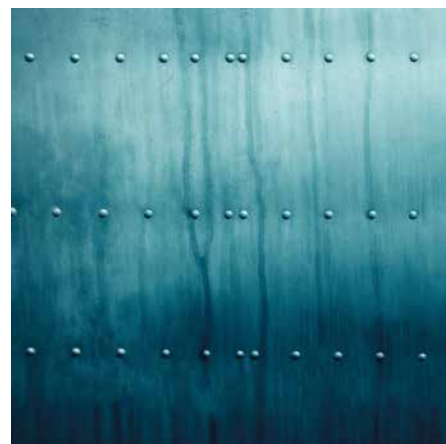
Brushed Aluminium, 0328

A modern classic that will always be appreciated.



Brushed Navy, 0330

Eye-catcher in pure culture. Fine structures attract the eye and create the very special impression.



Modern Metallic

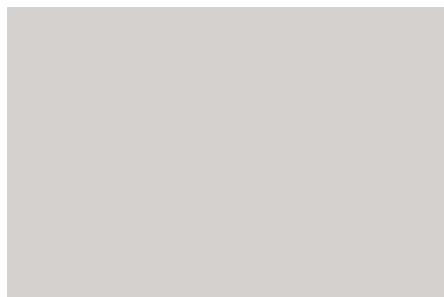
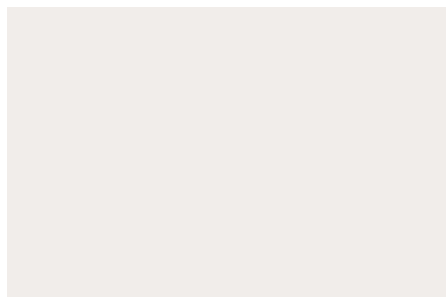
0328 Brushed Aluminium

0330 Brushed Navy

Architecture Line

5000 White Avalanche
5001 Ice Silver
5002 Smoke

5003 Charcoal Grey
5004 Lava Rock
5005 Pure Black





Pure Color

5030 Truffle
5031 Hazel
5032 Cinnamon
5051 Cayenne
5110 Ginger
5111 Curry
5113 Curcuma

5090 Deep Ocean
5091 African Clay
5092 Blue Mountain
5070 Poseidon
5071 Neptun



Truffle, 5030

A commitment to pleasure. Only those who appeal to all the senses, can achieve such results.



Hazel, 5031

Drawn with pleasure from the paint bucket of nature. A look that blends warmth and taste.



Cinnamon, 5032

A color that you can «smell with your eyes» so to speak. Cinnamon entices you to take sniff.

Cayenne, 5051

A spicy color that livens
up any object.



Pure Color

5030	Truffle	5090	Deep Ocean
5031	Hazel	5091	African Clay
5032	Cinnamon	5092	Blue Mountain
5051	Cayenne	5070	Poseidon
5110	Ginger	5071	Neptun
5111	Curry		
5113	Curcuma		

Ginger, 5110

With just the lightest shade of ginger, it is almost white, yet clearly its own distinctive color.

Curry, 5111

A wise balance with a bright liveliness and claim to timeless style.

Curcuma, 5113

Beautiful and highly visible in pure culture. Always an eye catcher.



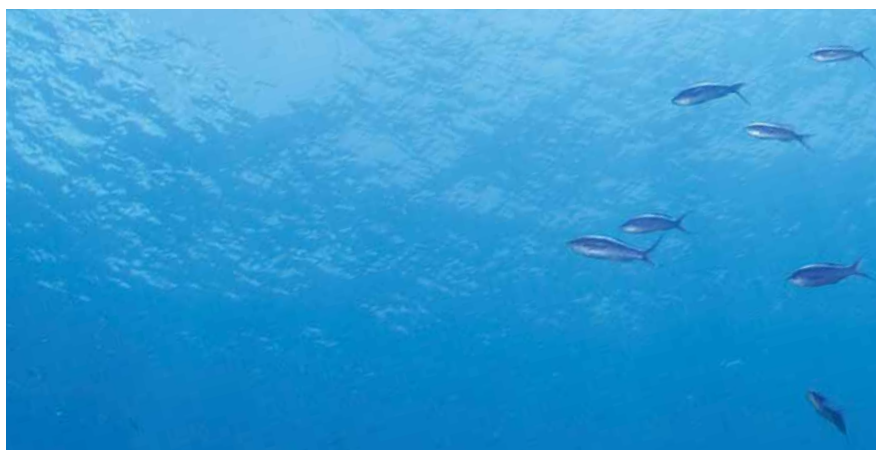
Pure Color

5030 Truffle
5031 Hazel
5032 Cinnamon
5051 Cayenne
5110 Ginger
5111 Curry
5113 Curcuma

5090 Deep Ocean
5091 African Clay
5092 Blue Mountain
5070 Poseidon
5071 Neptun

Deep Ocean, 5090

Inspiration drawn from the ocean floor gives insight into a mysterious world.



African Clay, 5091

Back to basics. The encounter with earth as the original element.



Blue Mountain, 5092

The color of the setting day, when the last light gently covers the mountain peaks.





Pure Color

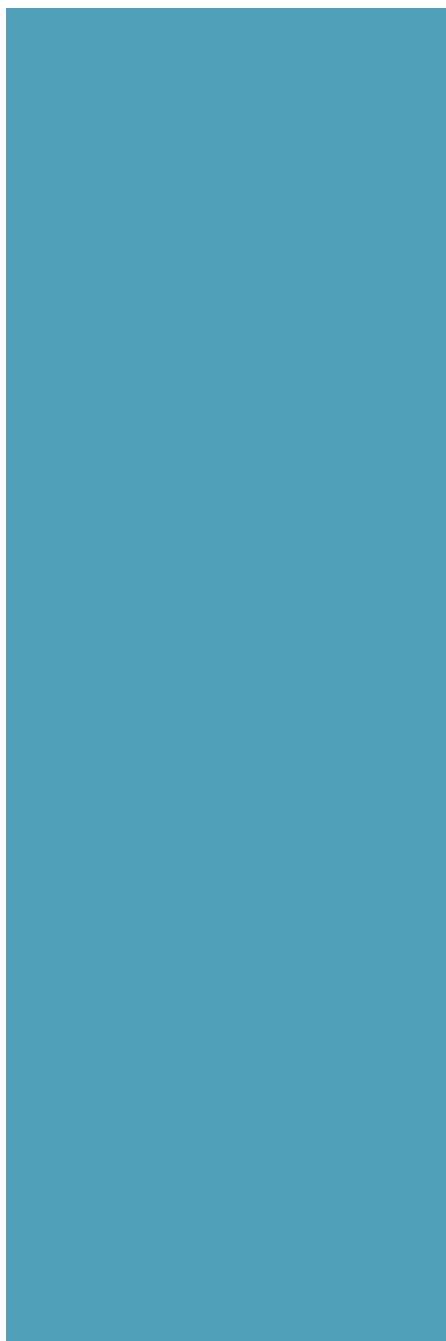
5030 Truffle
5031 Hazel
5032 Cinnamon
5051 Cayenne
5110 Ginger
5111 Curry
5113 Curcuma

5090 Deep Ocean
5091 African Clay
5092 Blue Mountain
5070 Poseidon
5071 Neptun

Poseidon, 5070

As intense as the captivating power
of the elemental forces.





Neptun, 5071

Where the sea is the most beautiful,
it is exactly this color.



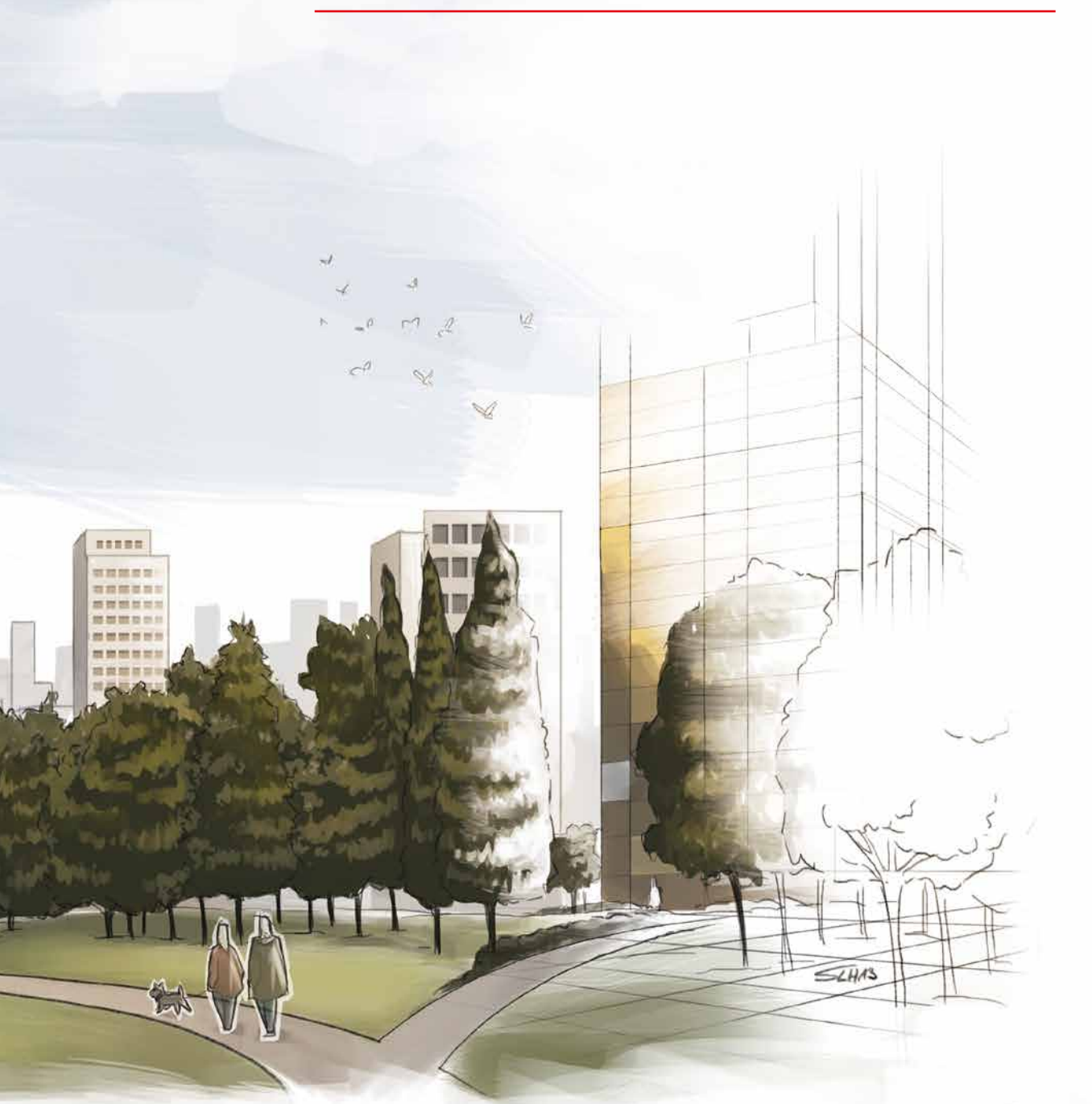


Illustrations and Decors: FunderMax

Images: fotolia, istockphoto

m.look

The design of these visionary buildings is an exciting challenge that requires ingenuity and experience. Impressive buildings deserve smart materials that appreciate the value of these special places. **m.look** is just such a material.



FUNDERMAX®

m.look

FunderMax GmbH

Klagenfurter Straße 87-89
A-9300 St. Veit / Glan

Tel.: +43 (0) 5 / 9494-0

Fax: +43 (0) 5 / 9494-4200

mlook@fundermax.at

www.m.look.at

MEMBER OF *Constantia* INDUSTRIES



elemental
Architectural Cladding Specialists

[e: info@elemental.ie](mailto:info@elemental.ie)

[p: +353 \(0\)1 293 8951](tel:+35312938951)