



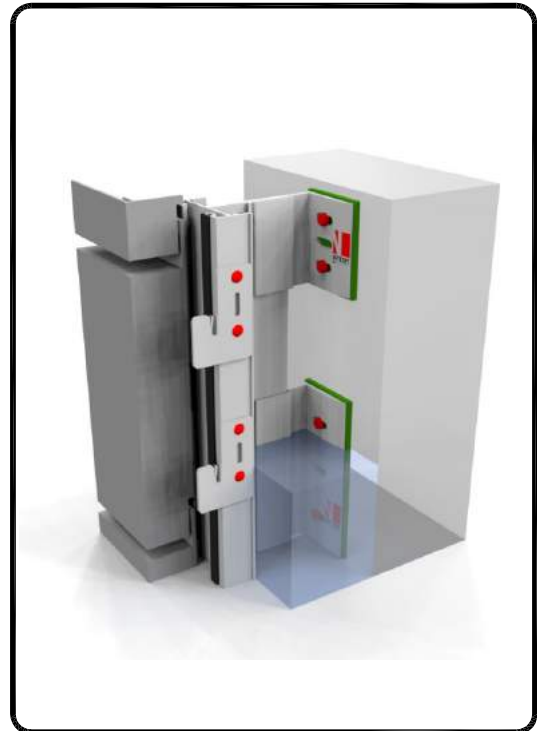
NV7



elemental
Architectural Cladding Specialists

aluminium support system for
rainscreen cladding cassette panels

NVELOPE NV7 SYSTEM

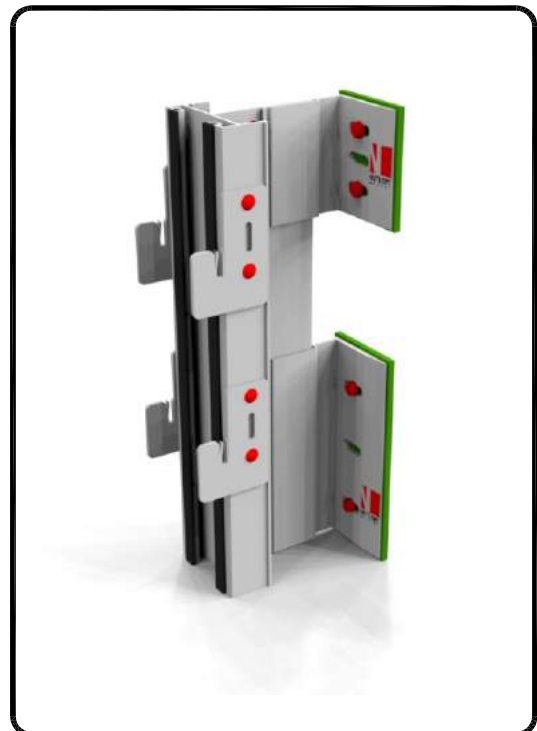


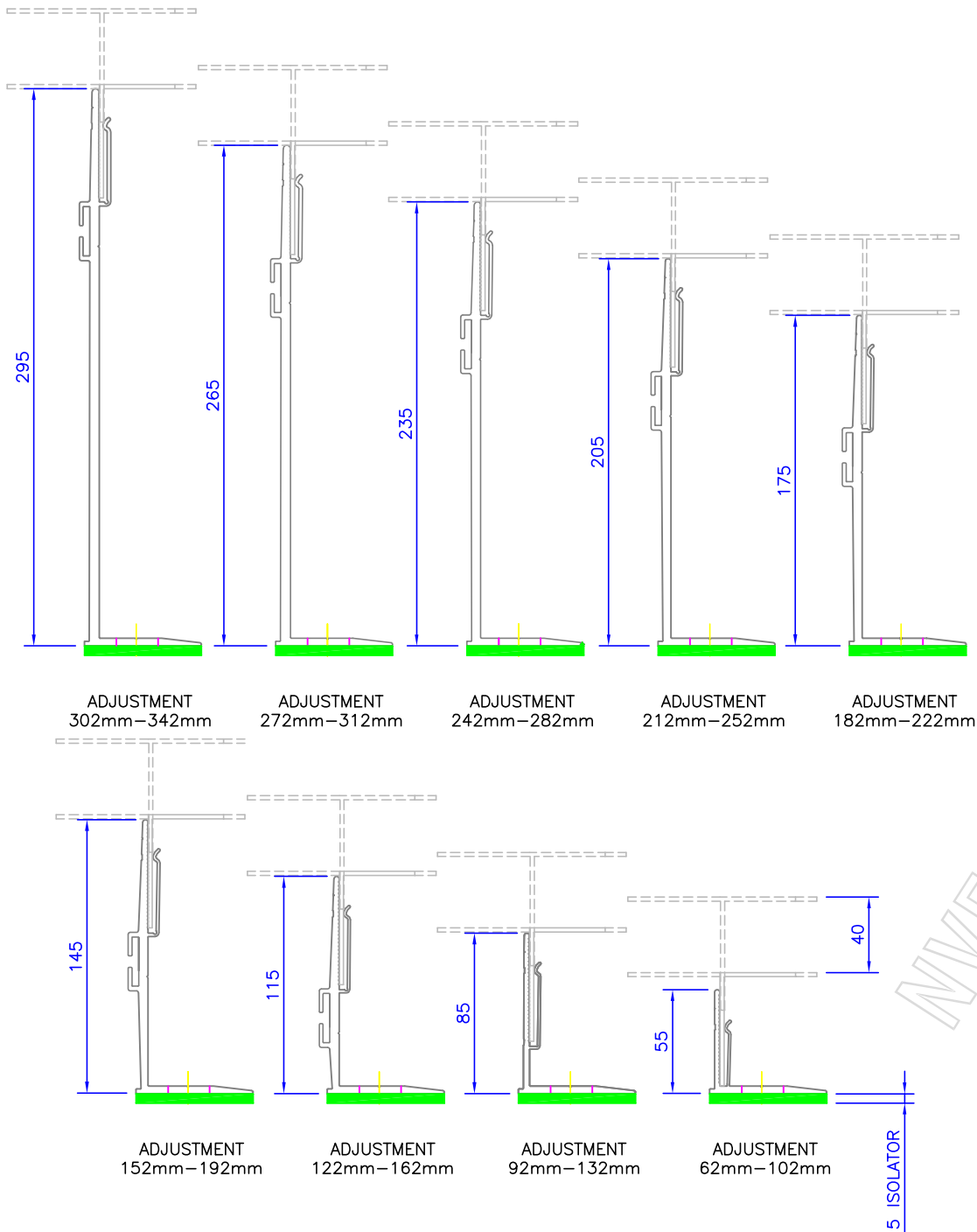
LEGEND:

- A – Cassette panel
- 1 – SFS steel wall + cement board
- 2 – Nvelope – support bracket
- 3 – Stainless steel fixing
- 4 – Cassette profile vertical
- 5 – Self drilling stainless steel screw SR2 4.2 x 16
- 7 – Thermal insulation
- 8 – Ventilation Cavity
- 10 – NVELOPE Thermal isolator

CONTENTS:

- NV7-00 NVELOPE System detail sheet
- NV7-01 Tolerances for bracket adjustment
- NV7-02 Cladding view locations
- NV7-03 Horizontal section
- NV7-04a Typical section double bracket
- NV7-04b Typical section single bracket
- NV7-05 Vertical section—base of cladding
- NV7-06 Vertical section—top of cladding
- NV7-07 Horizontal section window jamb
- NV7-08 Vertical section window sill
- NV7-09 Vertical section window head
- NV7-10 External corner
- NV7-11 Internal corner

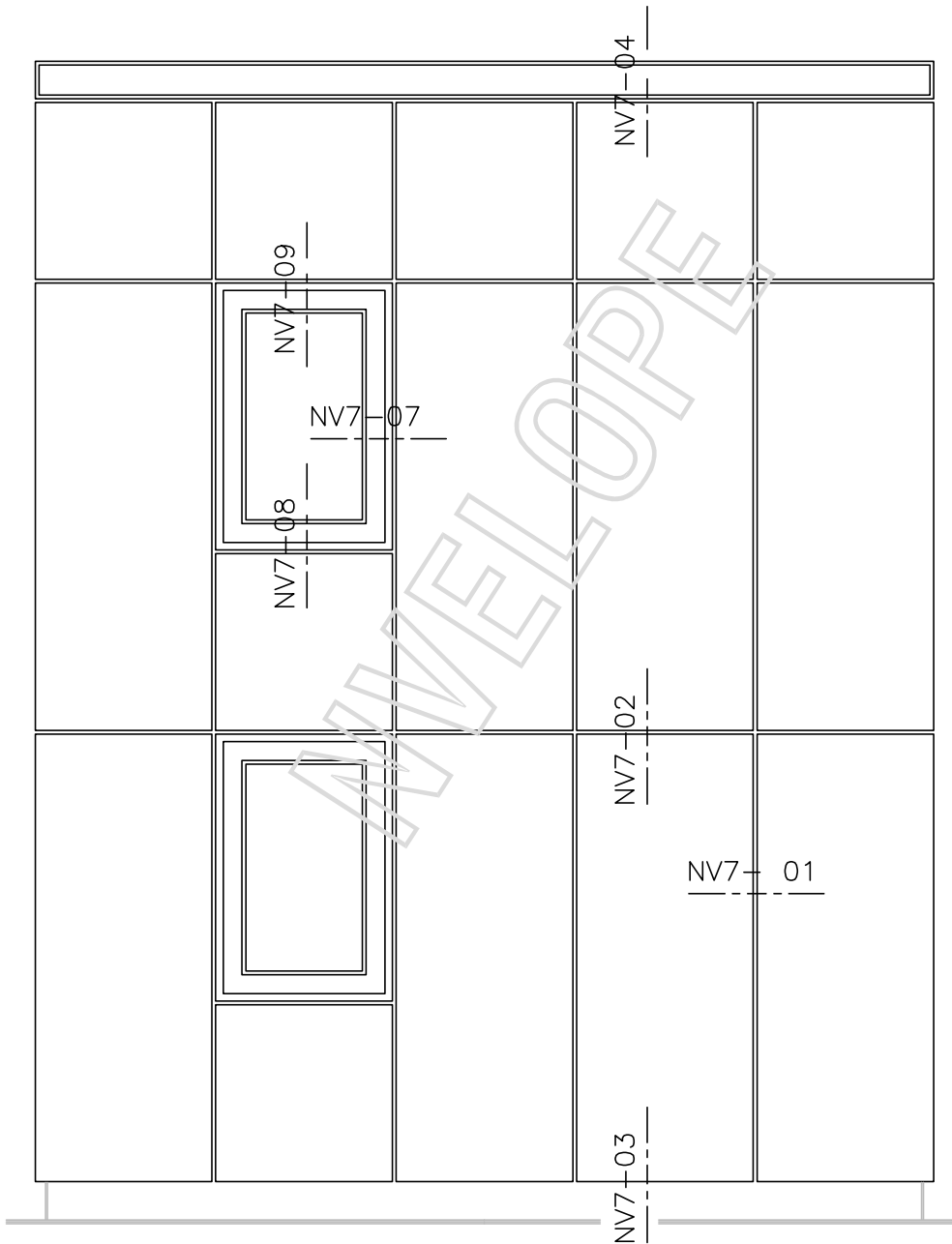




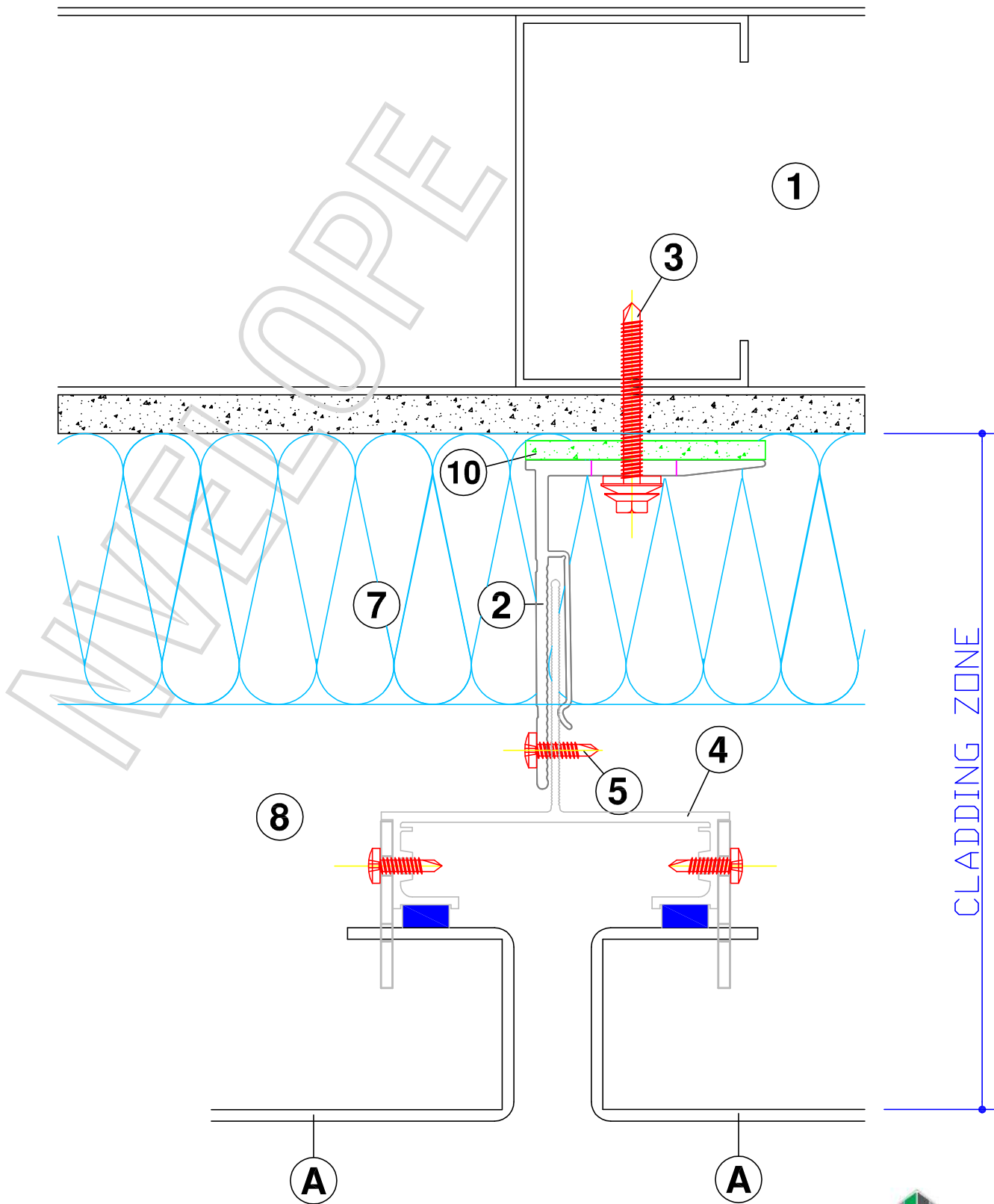
NVELOPE

BRACKETS	Adjustment range for each bracket (mm)	
Nvelope 60	from 62	to 102
Nvelope 90	from 92	to 132
Nvelope 120	from 122	to 162
Nvelope 150	from 152	to 192
Nvelope 180	from 182	to 222
Nvelope 210	from 212	to 252
Nvelope 240	from 242	to 282
Nvelope 270	from 272	to 312
Nvelope 300	from 302	to 342

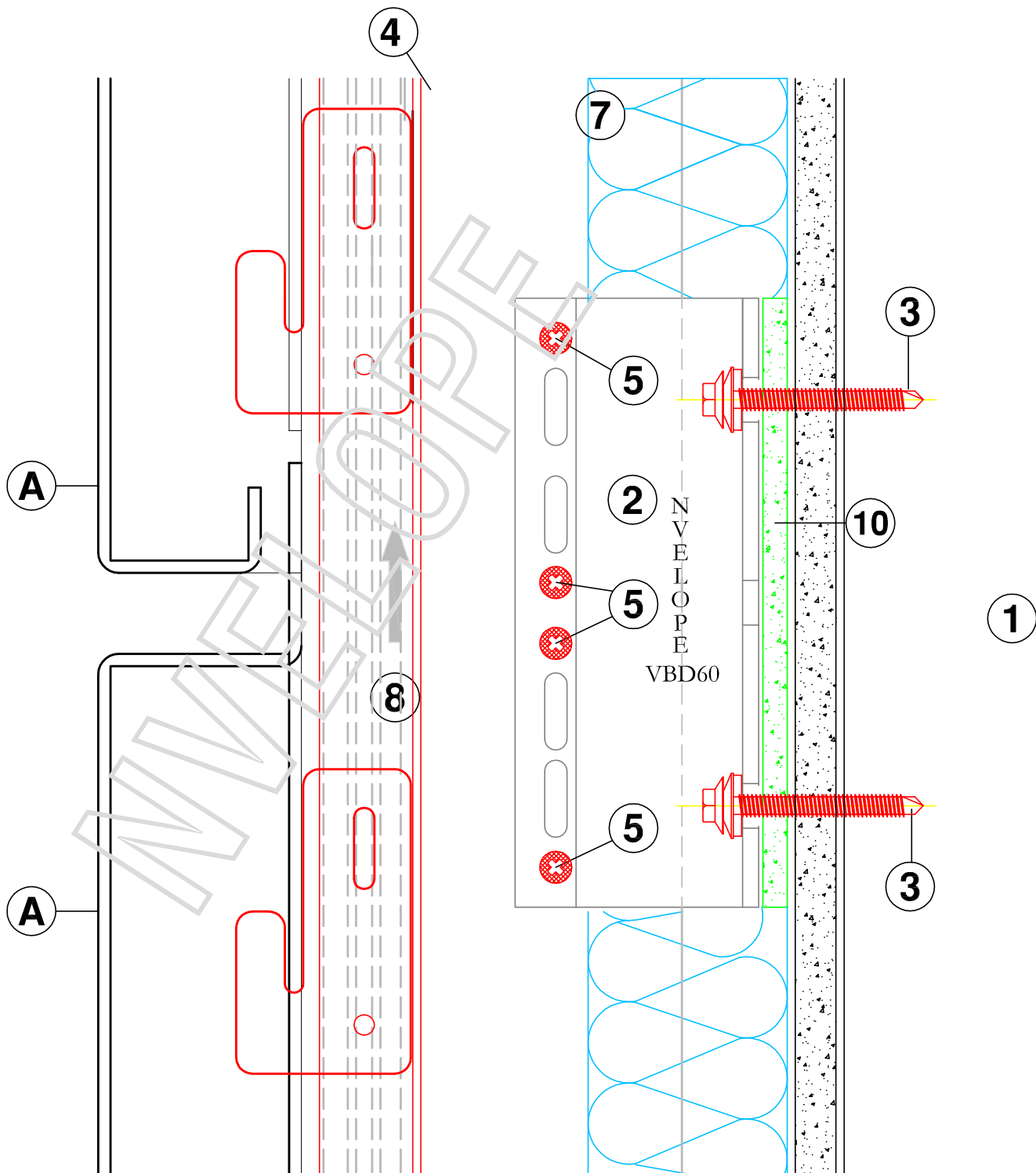
HORIZONTAL SECTIONS
TOLERANCES FOR ADJUSTMENT

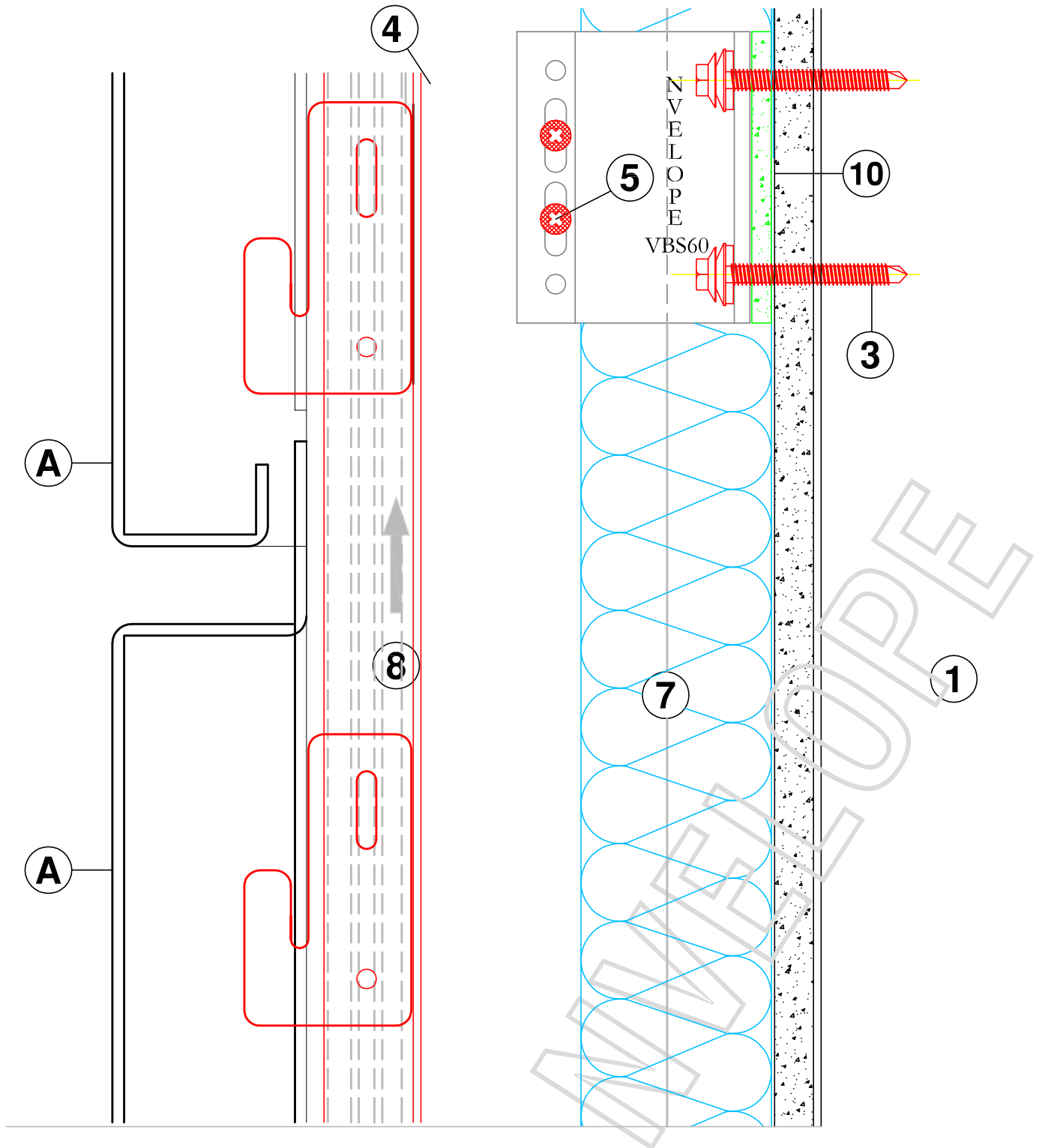


VIEW OF CLADDING - DETAIL LOCATIONS

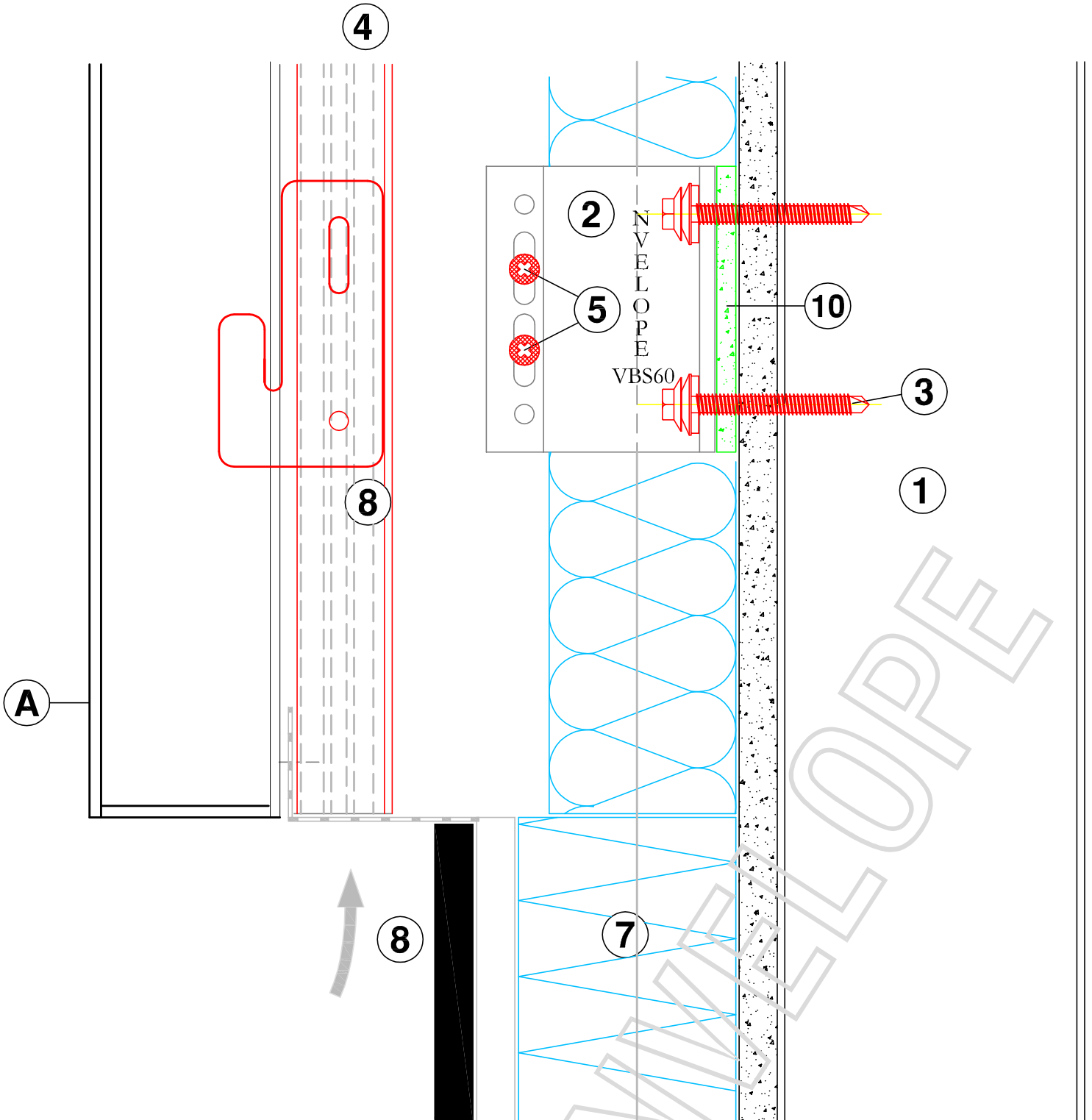


HORIZONTAL SECTION - NVELOPE 90

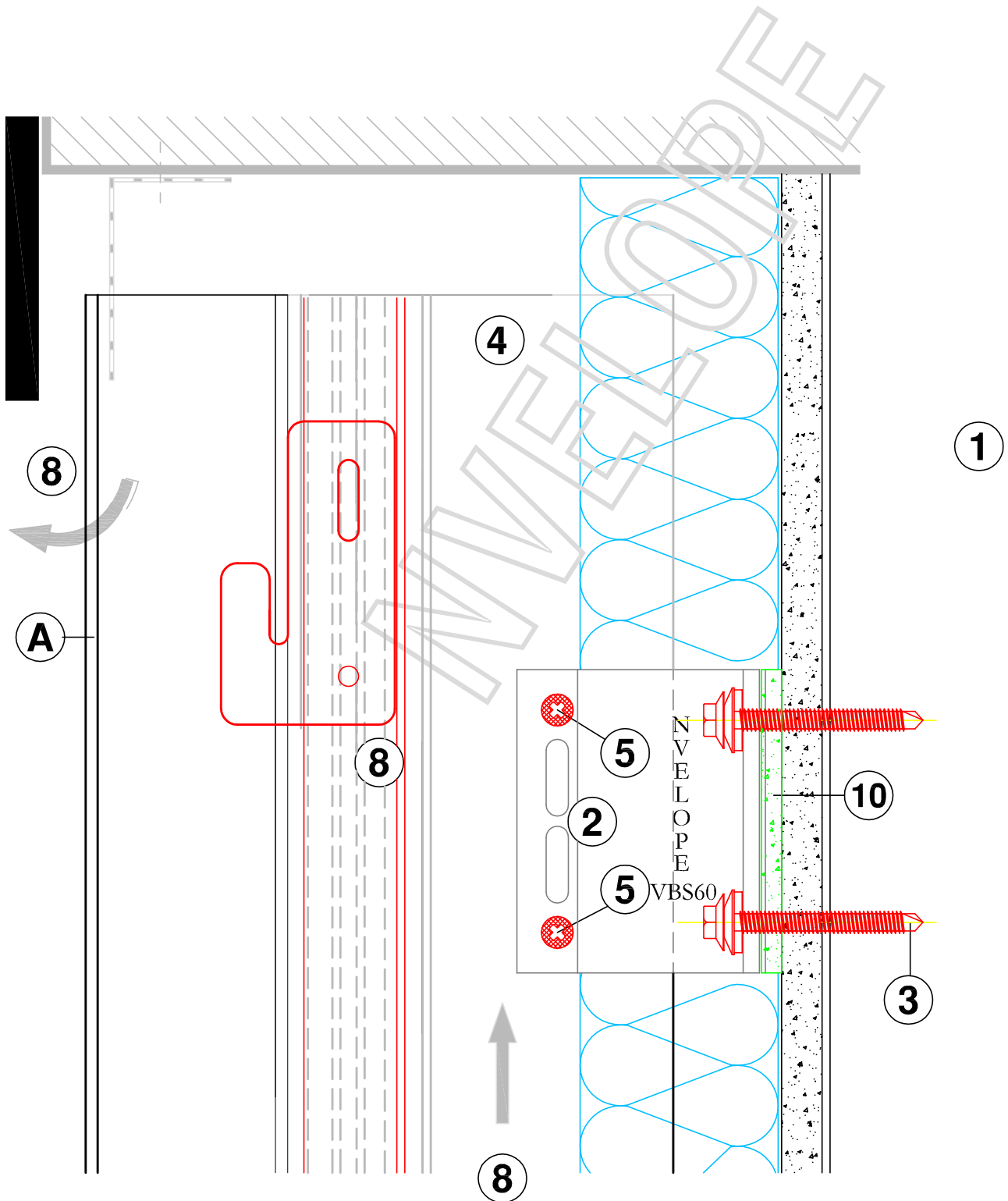




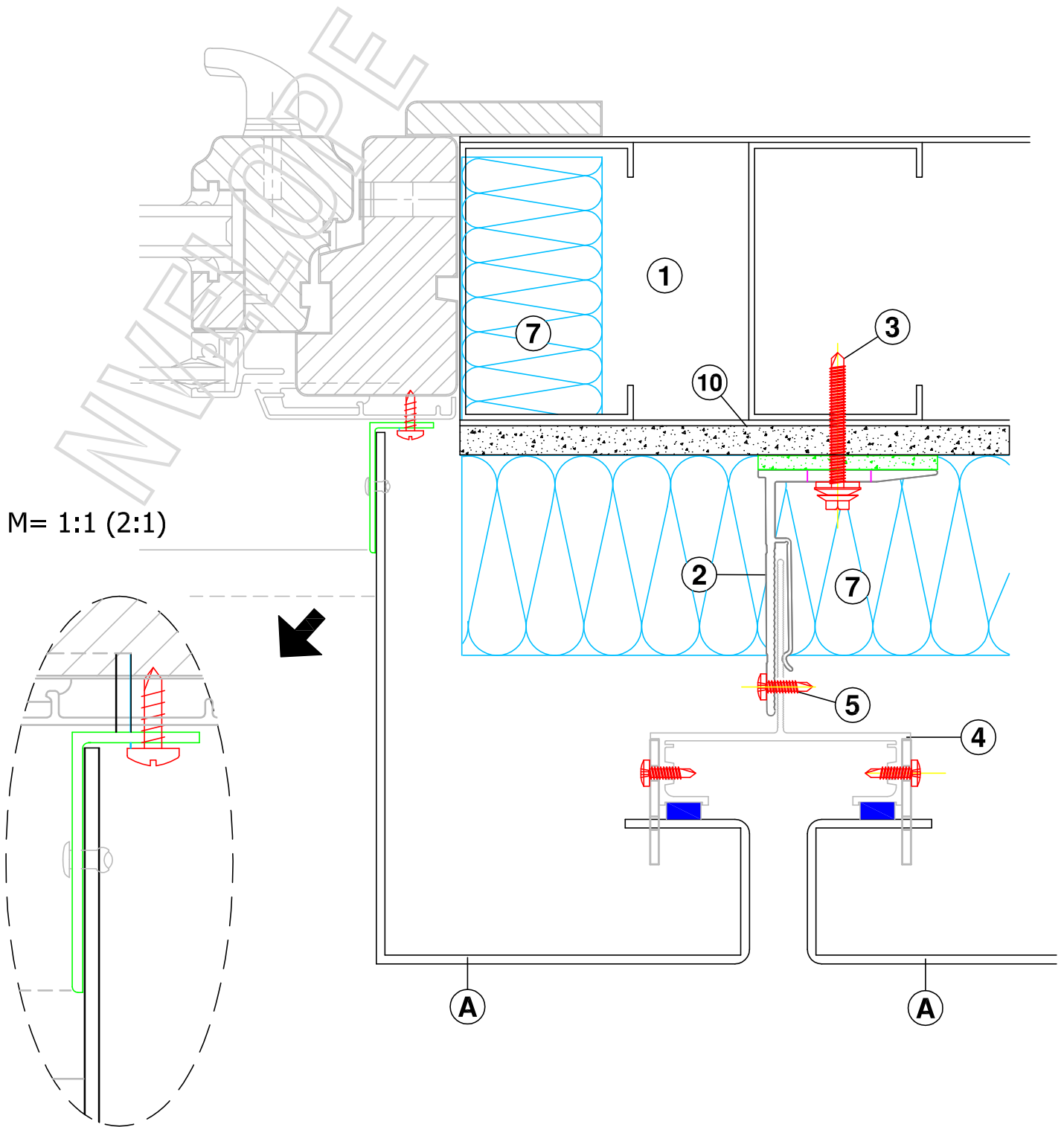
VERTICAL SECTION - NVELOPE 60 SINGLE SLIDING POINT



VERTICAL SECTION - BASE OF CLADDING



VERTICAL SECTION - TOP OF CLADDING

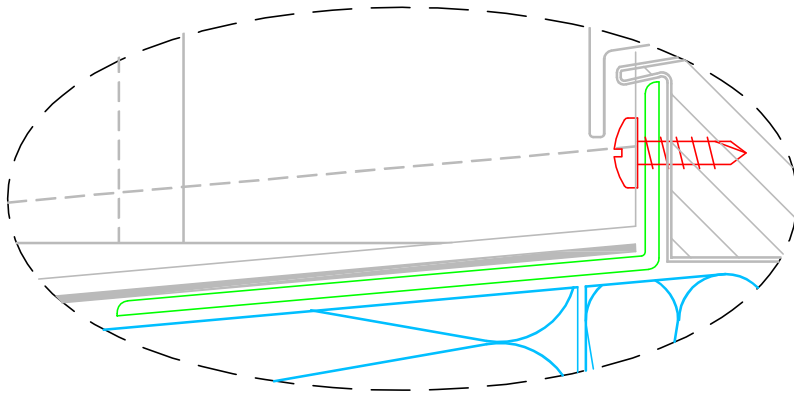


HORIZONTAL SECTION - WINDOW JAMB DETAIL

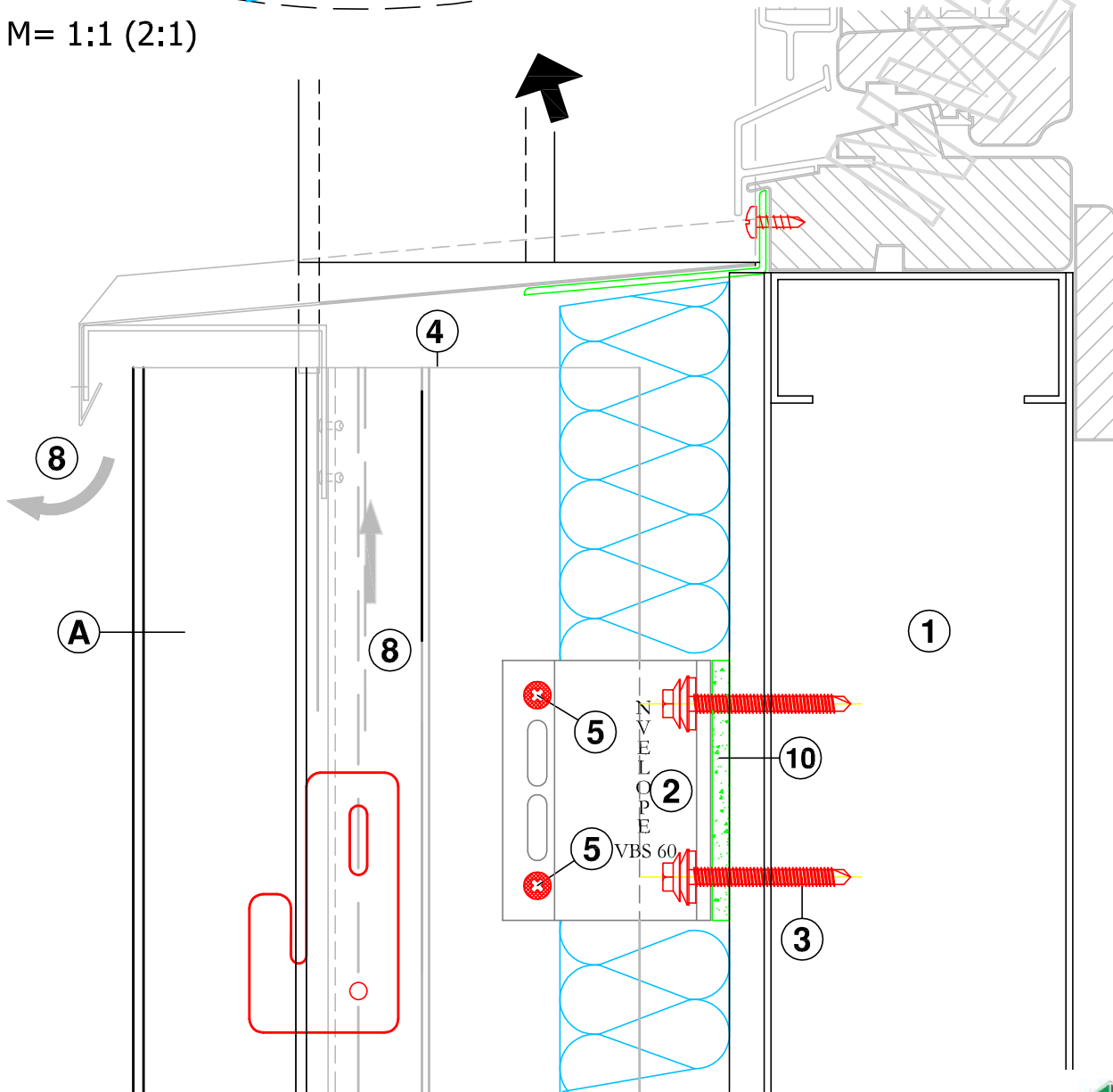


Tel: (01) 293 8951

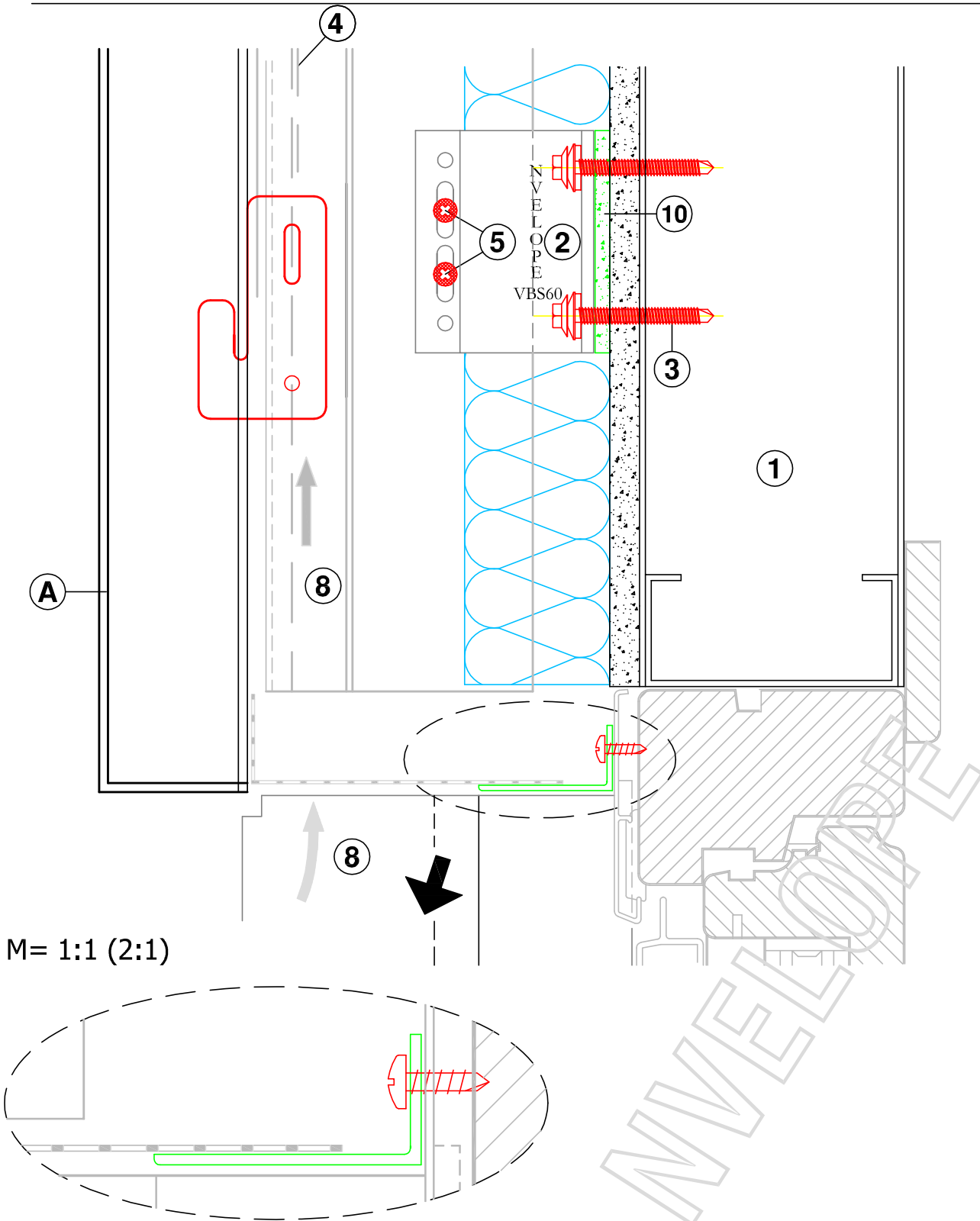
nvelope.com



M= 1:1 (2:1)

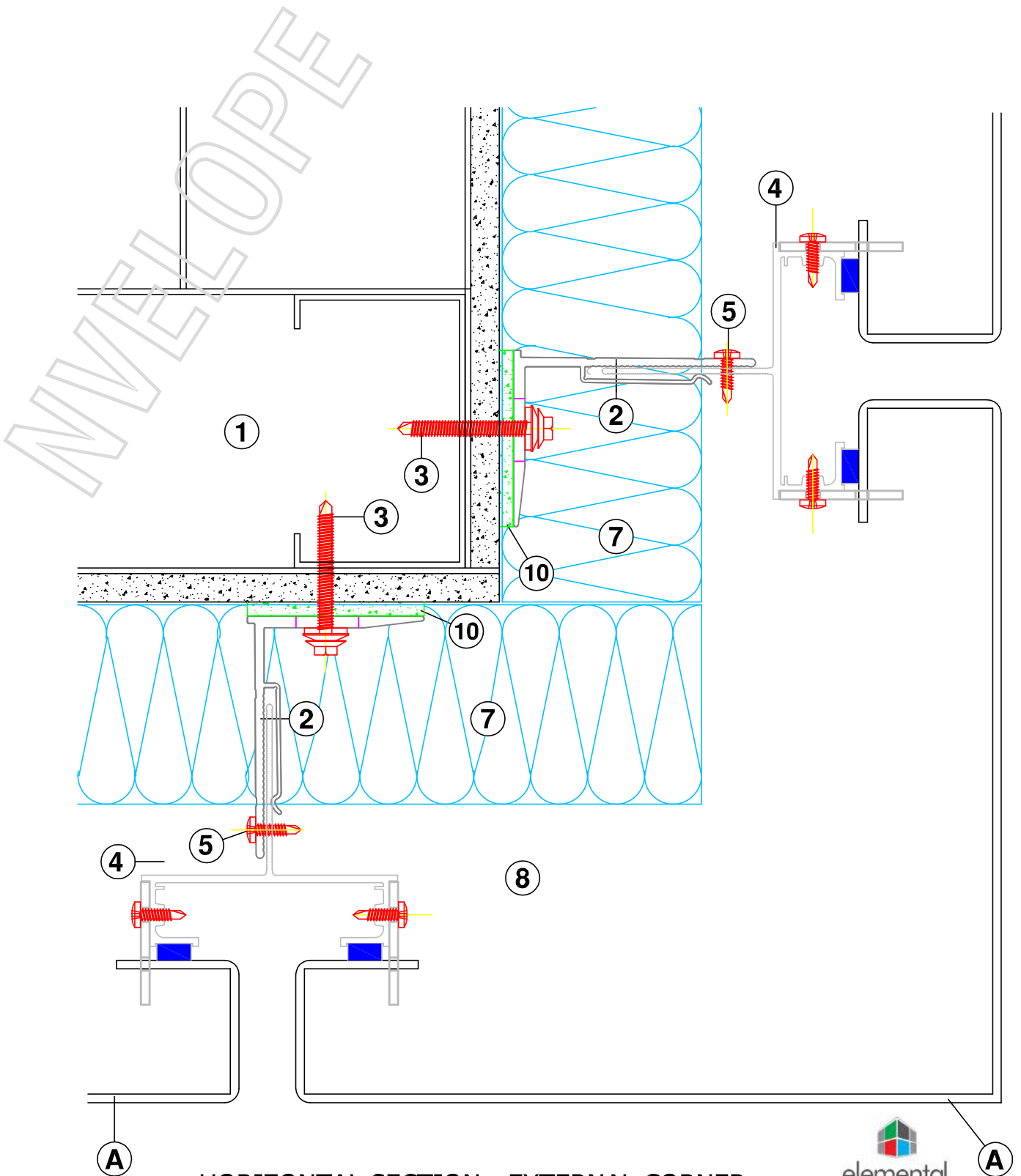


VERTICAL SECTION - WINDOW SILL DETAIL

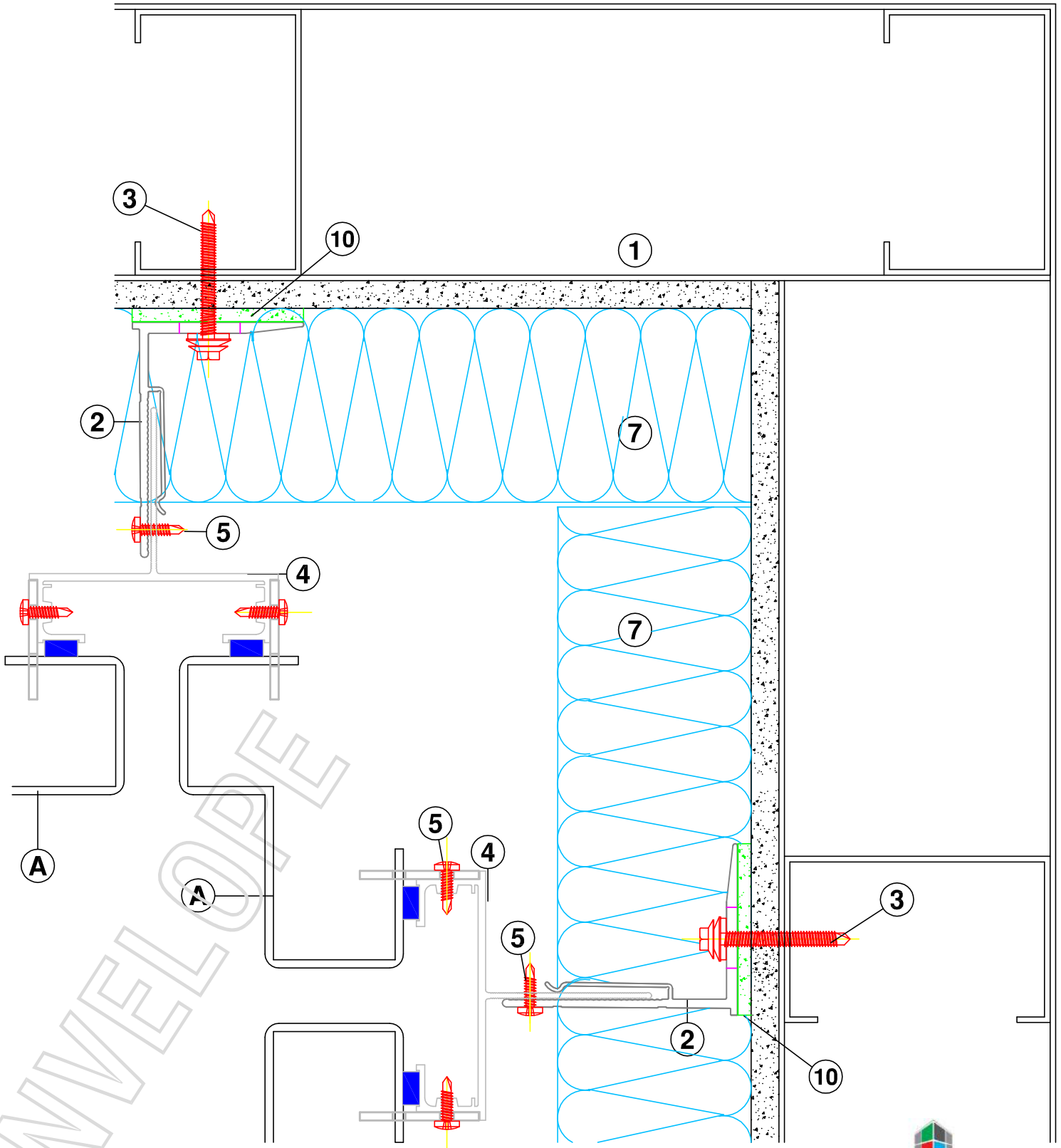


M= 1:1 (2:1)

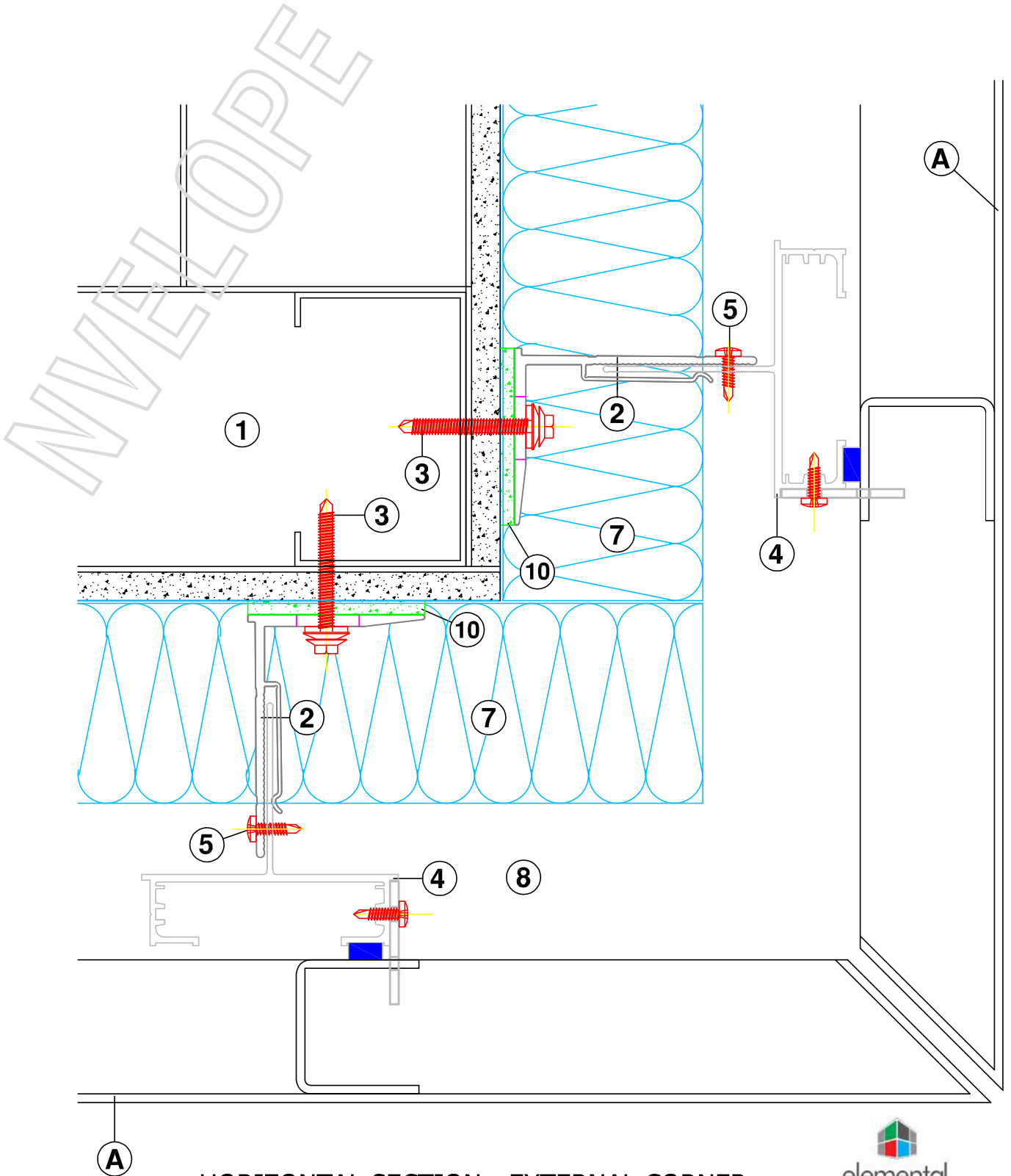
VERTICAL SECTION - WINDOW HEAD DETAIL



HORIZONTAL SECTION - EXTERNAL CORNER



HORIZONTAL SECTION - INTERNAL CORNER



HORIZONTAL SECTION - EXTERNAL CORNER