

# Facade System

## Ventilated facade

### EL-CB-MP

Elemental-Concrete Bracket- MSF Petrarch

## Petrarch, Reconstituted Stone

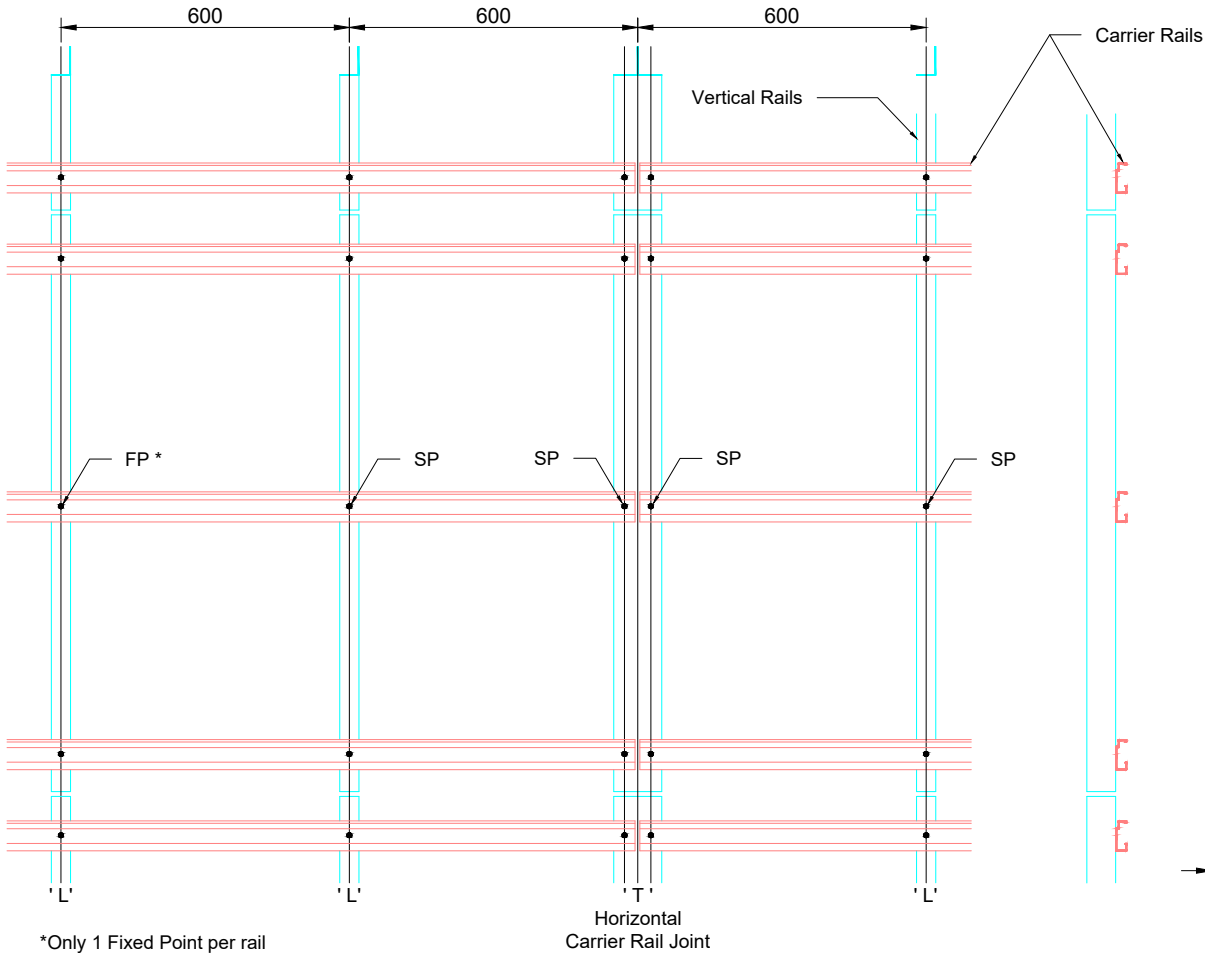
10mm Petrarch thickness  
Mechanical Secret Fix onto 2-layers  
Metal substructure

#### Contents:

EL-CB-MP01	SYSTEM LAYOUT
EL-CB-MP02	BRACKET TYPES AVAILABLE
EL-CB-MP03	BASE DETAIL
EL-CB-MP04	HORIZONTAL PANEL JOINT DETAIL
EL-CB-MP05	RAIL SUPPORT AND HORIZONTAL PANEL JOINT
EL-CB-MP06	VERTICAL PANEL JOINT DETAIL
EL-CB-MP07	RAIL SUPPORT AND VERTICAL PANEL JOINT
EL-CB-MP08	PANEL JOINT - MARTLET JOINT OPTION
EL-CB-MP09	RAIL SUPPORT AND JOINT DETAIL
EL-CB-MP10	EXTERNAL CORNER DETAIL
EL-CB-MP11	EXTERNAL CORNER - OPEN JOINT OPTION
EL-CB-MP12	INTERNAL CORNER - OPEN JOINT OPTION
EL-CB-MP13	GENERIC PARAPET DETAIL
EL-CB-MP14	WINDOW CILL DETAIL
EL-CB-MP15	WINDOW HEAD DETAIL
EL-CB-MP16	WINDOW JAMB REVEAL DETAIL
EL-CB-MP17	PANEL HANGERS
EL-CB-MP18	SITE ASSEMBLED & MSF CORNER GUIDELINES



Rail Centres



The fixing procedure for the horizontal carrier rail in max. 3m lengths is as follows:

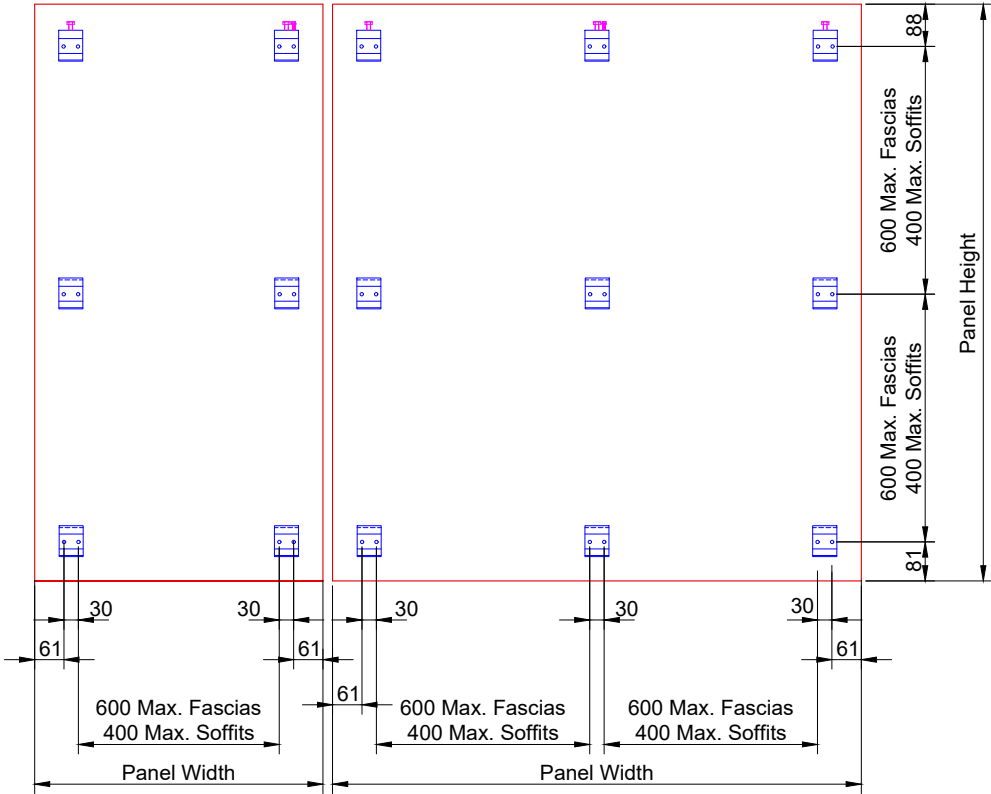
- fixing HCR to L rail - fixed point (FP)
- fixing HCR ends to T rail - sliding point (SP) - HCR **only** drill holes 10mm

Fixing guidelines


- Fixed Adjustable Hanger
- Adjustable Hanger
- Standard Hanger

Single Span

Multiple Span

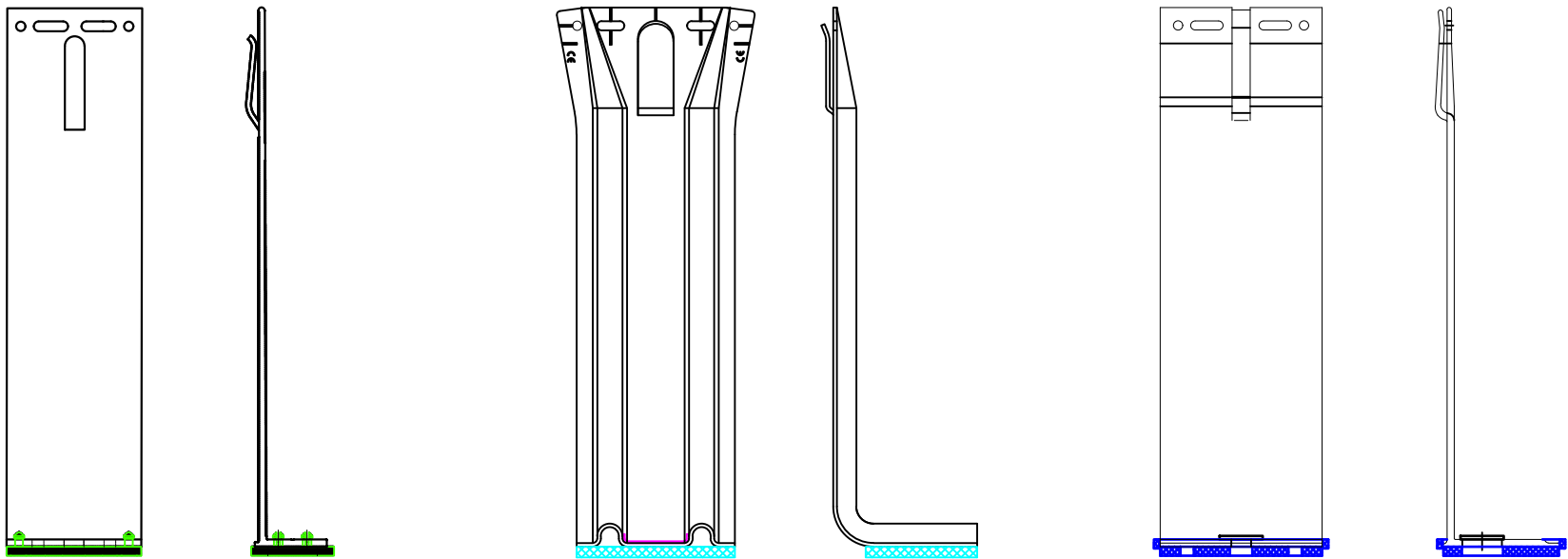


Panels Viewed from Rear

	<b>Elemental Architectural Cladding Specialists</b> #29 The Cubes Offices, Beacon South Quarter, Sandyford Dublin 18, D18 A264 Phone: +353 (0)1 293 8951 Email: info@elemental.ie	Drawing Title		ELEMENTAL PETRARCH - MSF SYSTEM LAYOUT									
		Drawing No.	EL-CB-MP01	System:	EL-MSF Petrarch	Size:	A4	Scale:	NTS	Drawn:	V.C.	Rev.	01

These drawings are indicative only, for use as a guide. The customer is always responsible for any specific design, structural calculations and calculating exact sizes & quantities of panels. Any project details and calculations supplied by Elemental Architectural Cladding Specialists are provided in good faith and should always be checked and approved by the project engineer responsible. Elemental Architectural Cladding Specialists will not accept any liability should the system be designed / installed incorrectly.

# BRACKET TYPES AVAILABLE FROM ELEMENTAL



**Elemental Architectural Cladding Specialists**  
#29 The Cubes Offices, Beacon South Quarter,  
Sandyford  
Dublin 18, D18 A264  
Phone: +353 (0)1 293 8951  
Email: info@elemental.ie

Drawing Title

BRACKET TYPES AVAILABLE

Drawing No.

EL-CB-MP02

System:

EL-MSF  
Petrarch

Size:

A4

Scale:

NTS

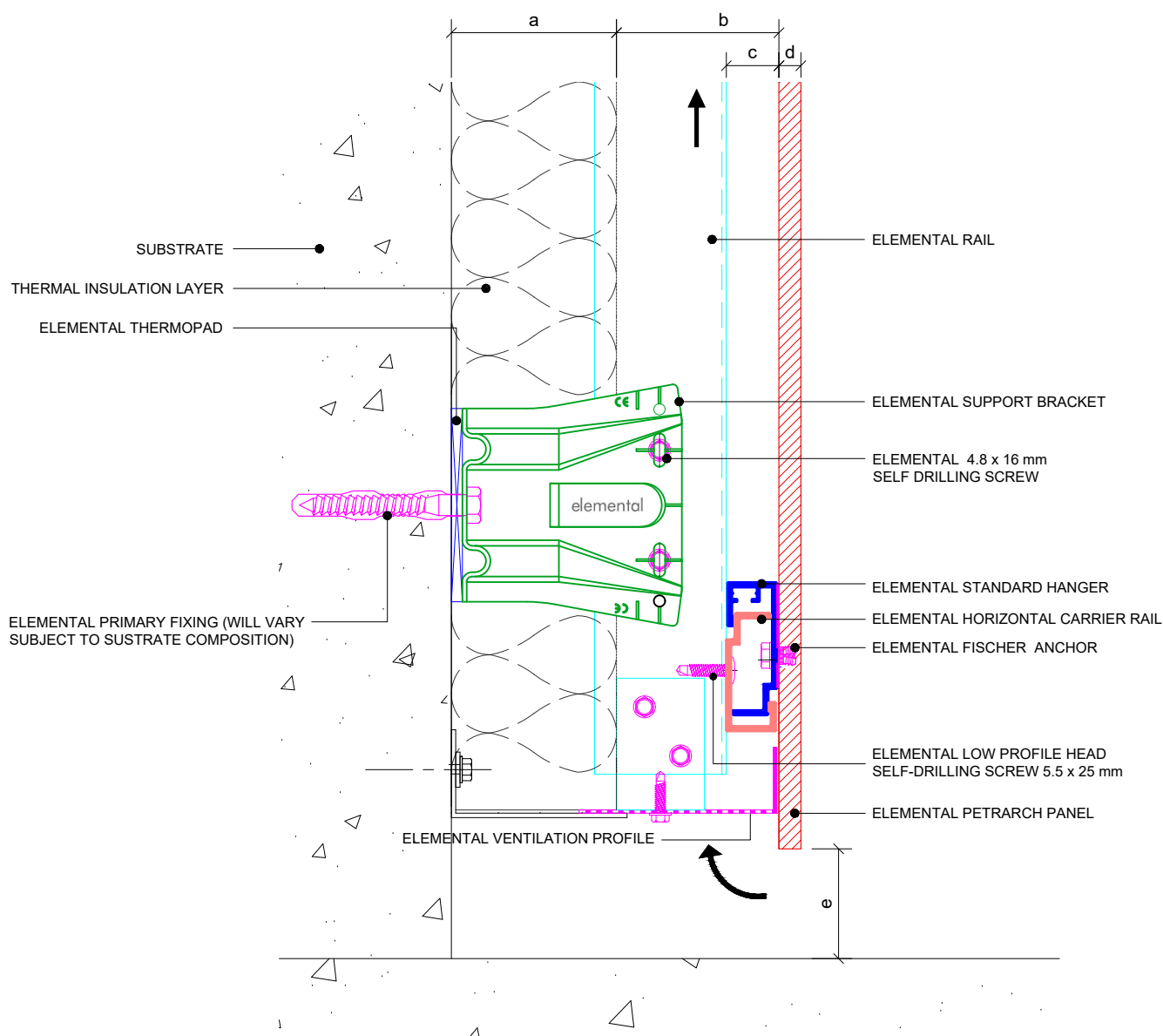
Drawn:

V.C.

Rev.

01

These drawings are indicative only, for use as a guide. The customer is always responsible for any specific design, structural calculations and calculating exact sizes & quantities of panels. Any project details and calculations supplied by Elemental Architectural Cladding Specialists are provided in good faith and should always be checked and approved by the project engineer responsible. Elemental Architectural Cladding Specialists will not accept any liability should the system be designed / installed incorrectly.



Dimensions	
a	Insulation thickness (varies)
b	Free vertical ventilation gap
c	Horizontal Carrier rail and Panel Hanger
d	Panel nominal thickness
e	Distance min. 50mm
a+b	Clad Zone



**Elemental Architectural Cladding Specialists**  
#29 The Cubes Offices, Beacon South Quarter,  
Sandyford  
Dublin 18, D18 A264  
Phone: +353 (0)1 293 8951  
Email: info@elemental.ie

Drawing Title

**ELEMENTAL PETRARCH - MSF  
BASE DETAIL**

Drawing No.

**EL-CB-MP03**

System:

**EL-MSF  
Petrarch**

Size:

**A4**

Scale:

**NTS**

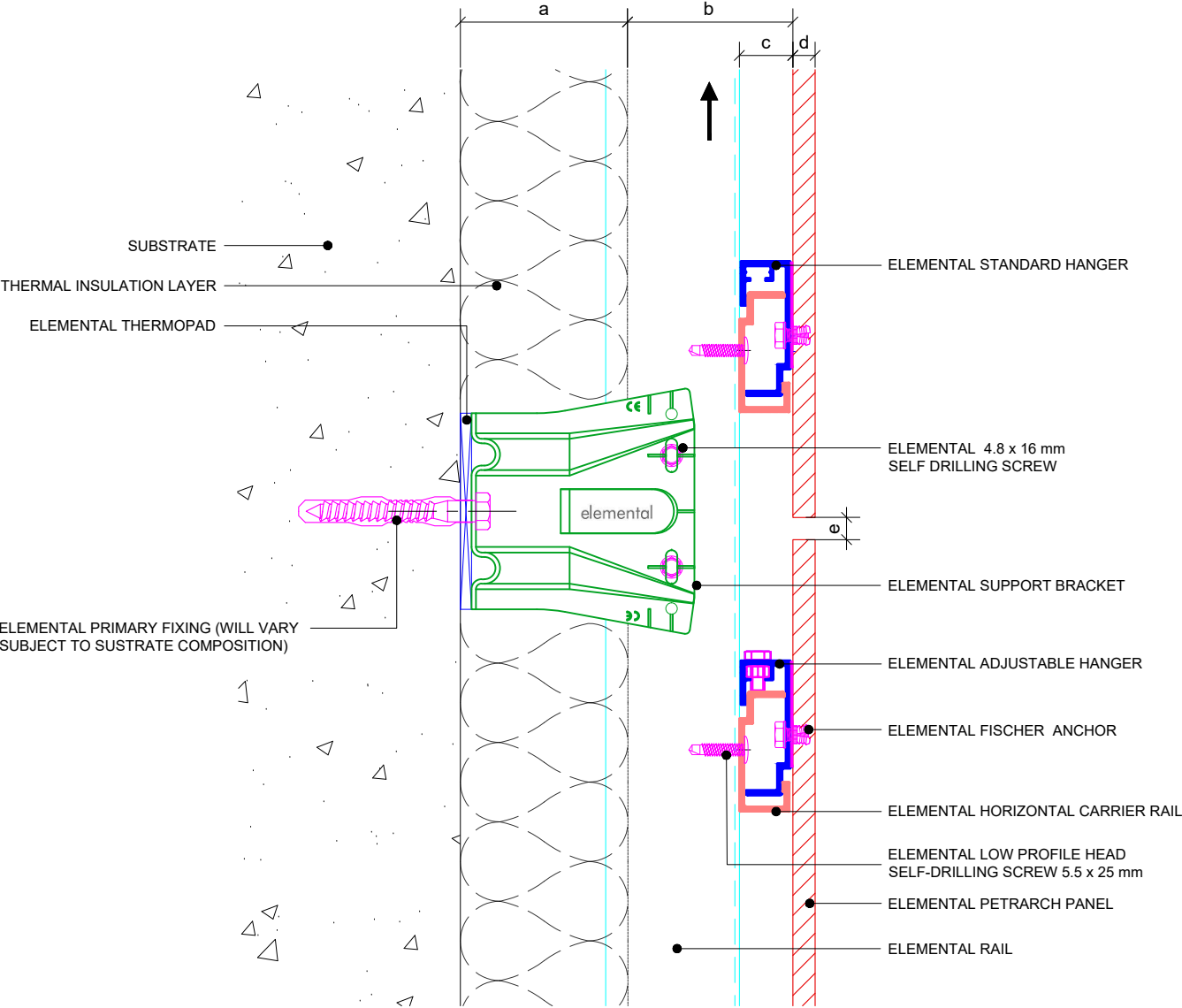
Drawn:

**V.C.**

Rev.

**01**

These drawings are indicative only, for use as a guide. The customer is always responsible for any specific design, structural calculations and calculating exact sizes & quantities of panels. Any project details and calculations supplied by Elemental Architectural Cladding Specialists are provided in good faith and should always be checked and approved by the project engineer responsible. Elemental Architectural Cladding Specialists will not accept any liability should the system be designed / installed incorrectly.



Dimensions	
a	Insulation thickness (varies)
b	Free vertical ventilation gap
c	Horizontal Carrier rail and Panel Hanger
d	Panel nominal thickness
e	Panel joint - min 10mm
a+b	Clad Zone



**Elemental Architectural Cladding Specialists**  
#29 The Cubes Offices, Beacon South Quarter,  
Sandyford  
Dublin 18, D18 A264  
Phone: +353 (0)1 293 8951  
Email: info@elemental.ie

Drawing Title

**ELEMENTAL PETRARCH - MSF  
HORIZONTAL PANEL JOINT DETAIL**

Drawing No.

**EL-CB-MP04**

System:

**EL-MSF  
Petrarch**

Size:

**A4**

Scale:

**NTS**

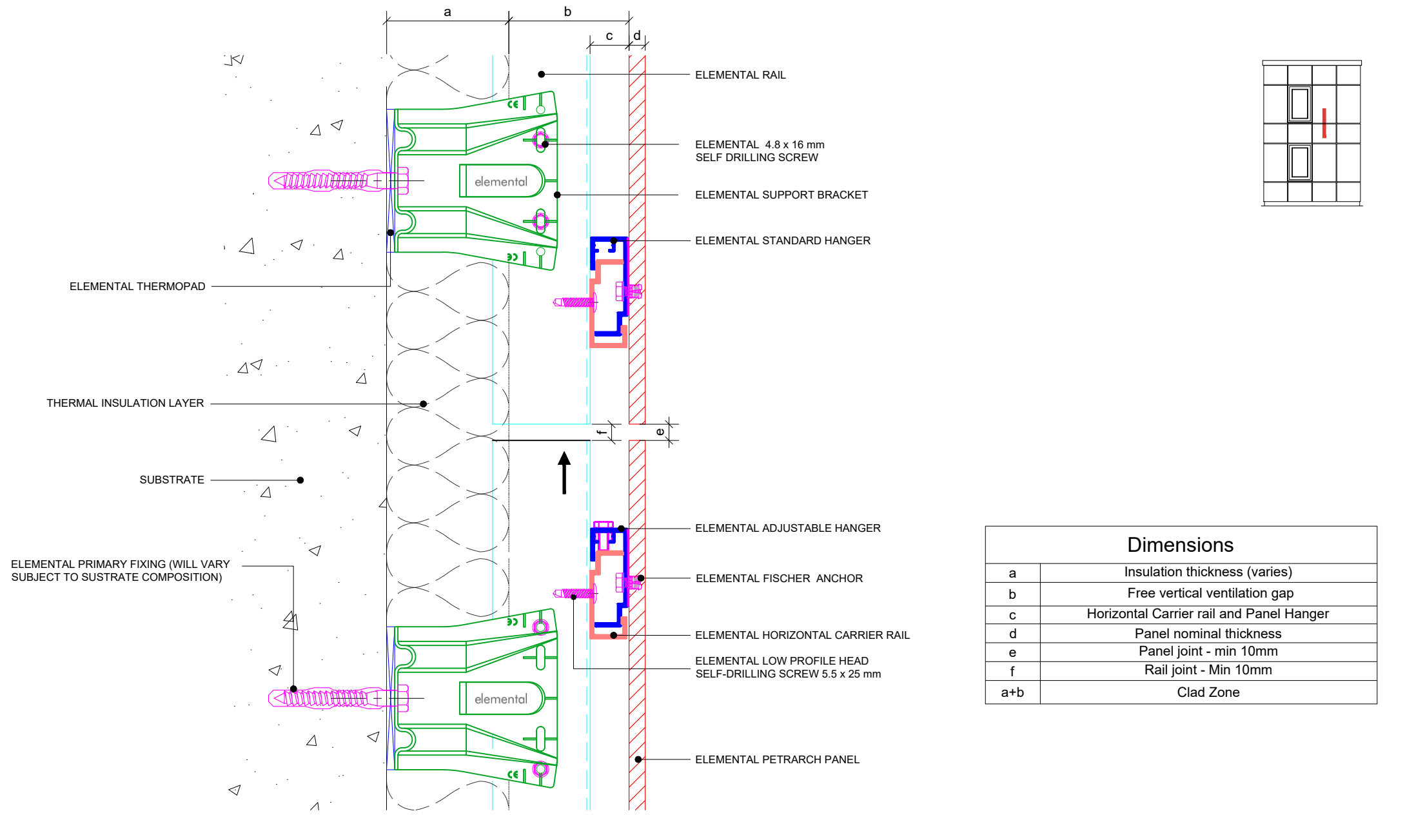
Drawn:

**V.C.**

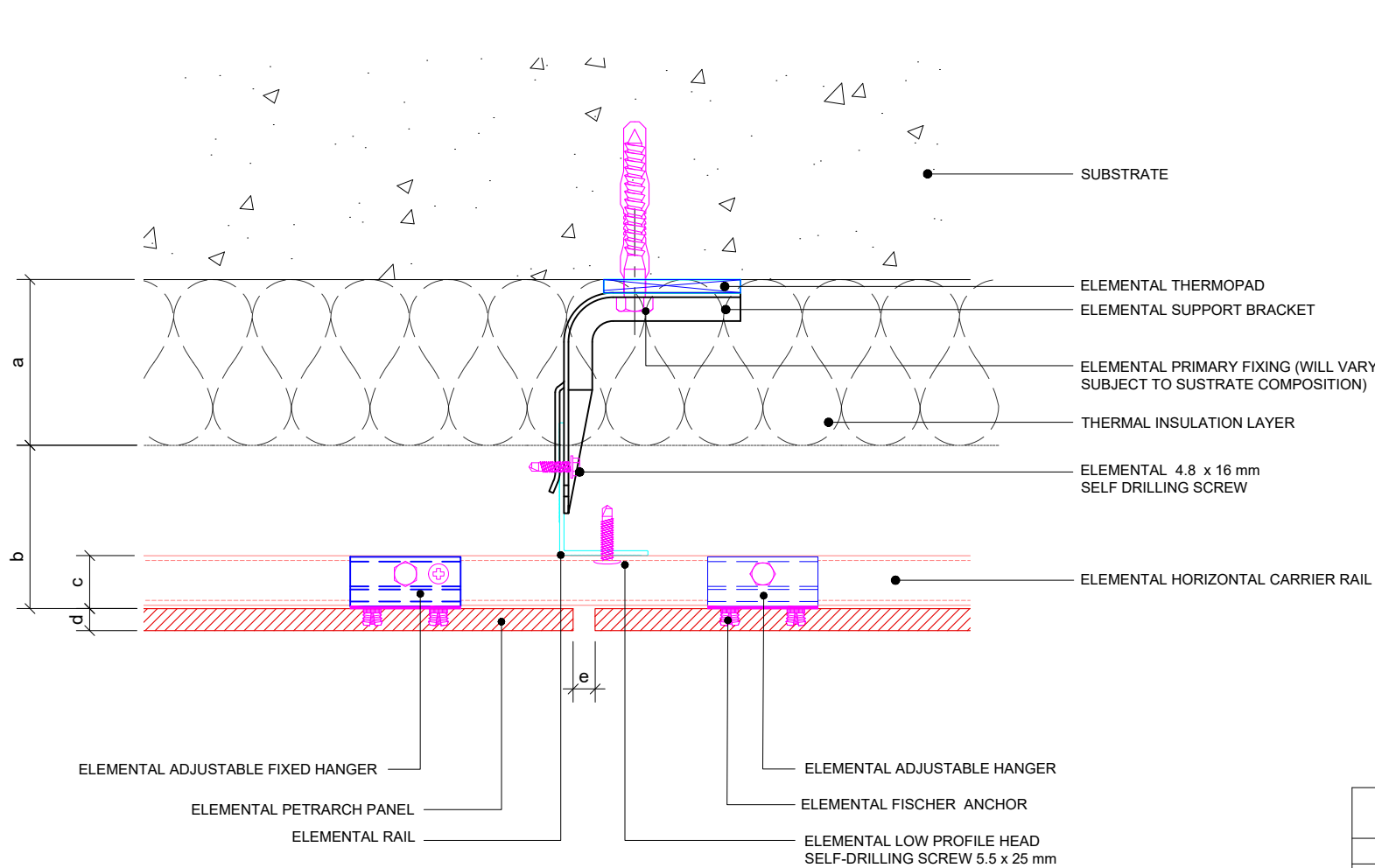
Rev.

**01**

These drawings are indicative only, for use as a guide. The customer is always responsible for any specific design, structural calculations and calculating exact sizes & quantities of panels. Any project details and calculations supplied by Elemental Architectural Cladding Specialists are provided in good faith and should always be checked and approved by the project engineer responsible. Elemental Architectural Cladding Specialists will not accept any liability should the system be designed / installed incorrectly.



These drawings are indicative only, for use as a guide. The customer is always responsible for any specific design, structural calculations and calculating exact sizes & quantities of panels. Any project details and calculations supplied by Elemental Architectural Cladding Specialists are provided in good faith and should always be checked and approved by the project engineer responsible. Elemental Architectural Cladding Specialists will not accept any liability should the system be designed / installed incorrectly.



Dimensions	
a	Insulation thickness (varies)
b	Free vertical ventilation gap
c	Horizontal Carrier rail and Panel Hanger
d	Panel nominal thickness
e	Panel joint - min 10mm
a+b	Clad Zone



**Elemental Architectural Cladding Specialists**  
 #29 The Cubes Offices, Beacon South Quarter,  
 Sandyford  
 Dublin 18, D18 A264  
 Phone: +353 (0)1 293 8951  
 Email: [info@elemental.ie](mailto:info@elemental.ie)

Drawing Title

### ELEMENTAL PETRARCH - MSF VERTICAL PANEL JOINT DETAIL

Drawing No.

EL-CB-MP06

System:

EL-MSF  
Petrarch

Size:

A4

**Scale:**

NTS

Drawn:

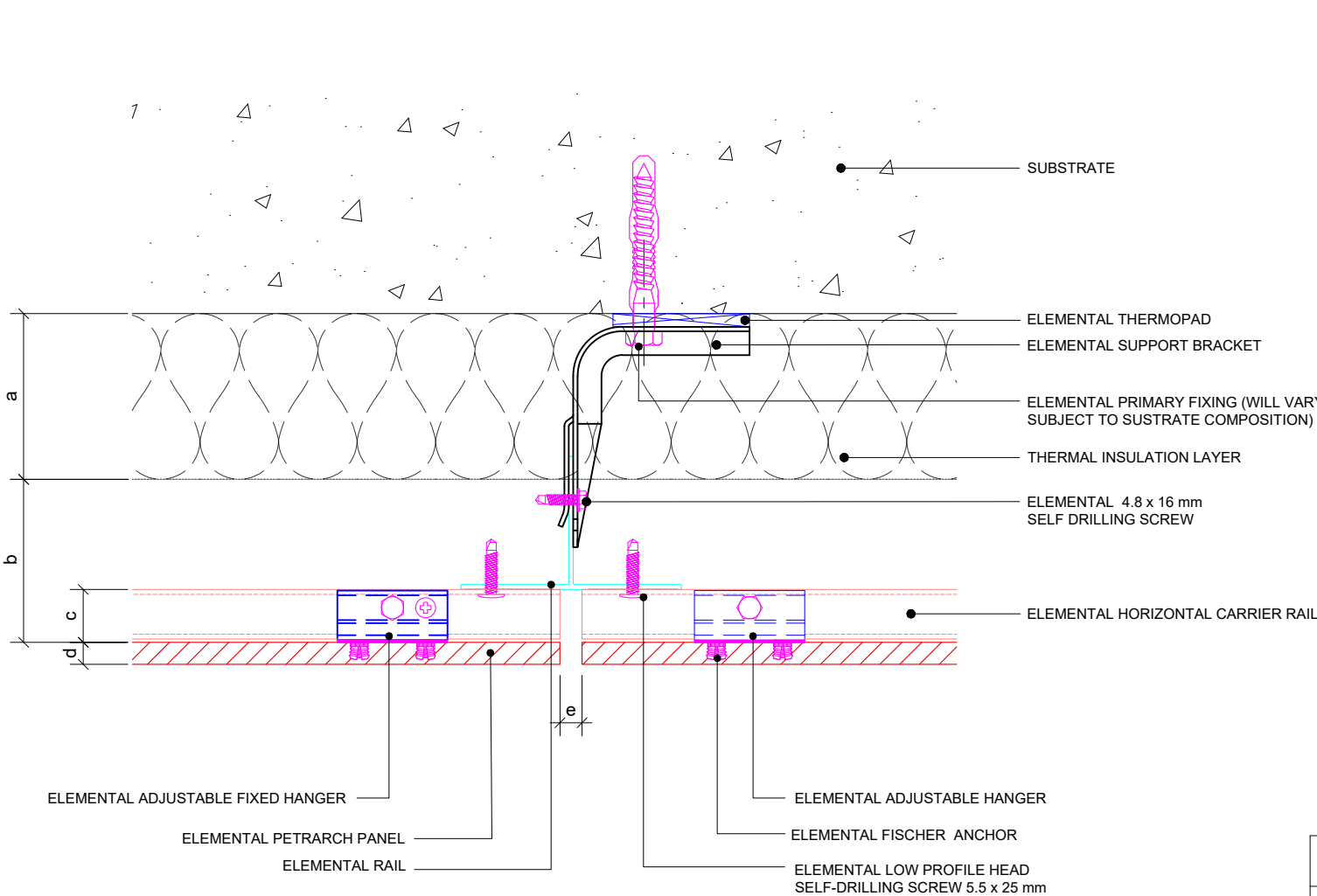
**V.C.**

Rev.

# 01

Elemental Architectural Cladding Specialists reserve the right to amend details at any time without prior notice. Reproduction or disclosure to third parties is strictly prohibited and can only be attained through signed, written consent from Elemental ACS.

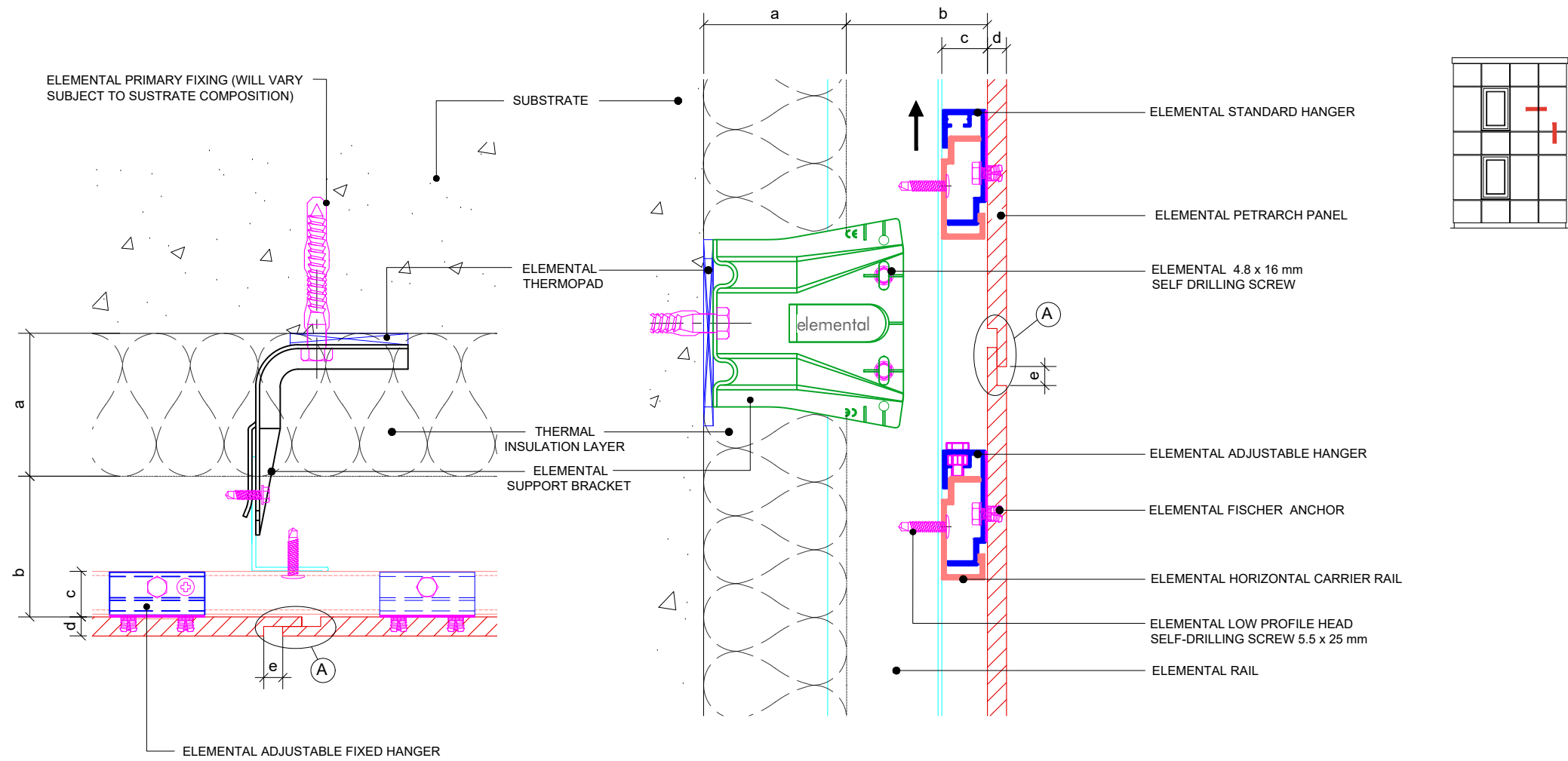
These drawings are indicative only, for use as a guide. The customer is always responsible for any specific design, structural calculations and calculating exact sizes & quantities of panels. Any project details and calculations supplied by Elemental Architectural Cladding Specialists are provided in good faith and should always be checked and approved by the project engineer responsible. Elemental Architectural Cladding Specialists will not accept any liability should the system be designed / installed incorrectly.



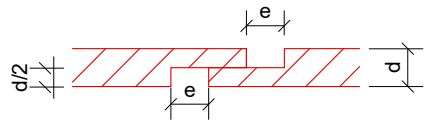
Dimensions	
a	Insulation thickness (varies)
b	Free vertical ventilation gap
c	Horizontal Carrier rail and Panel Hanger
d	Panel nominal thickness
e	Panel joint - min 10mm
a+b	Clad Zone



These drawings are indicative only, for use as a guide. The customer is always responsible for any specific design, structural calculations and calculating exact sizes & quantities of panels. Any project details and calculations supplied by Elemental Architectural Cladding Specialists are provided in good faith and should always be checked and approved by the project engineer responsible. Elemental Architectural Cladding Specialists will not accept any liability should the system be designed / installed incorrectly.



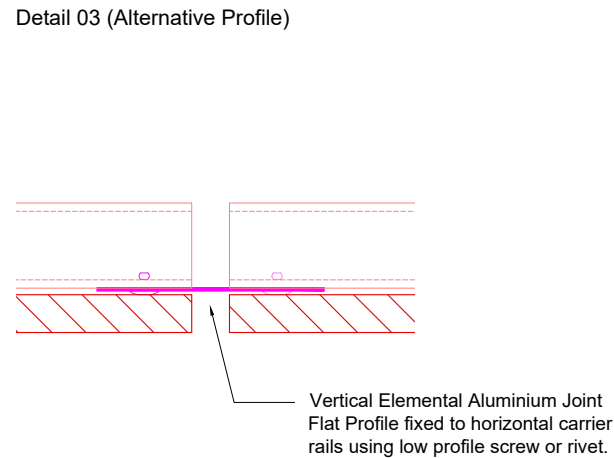
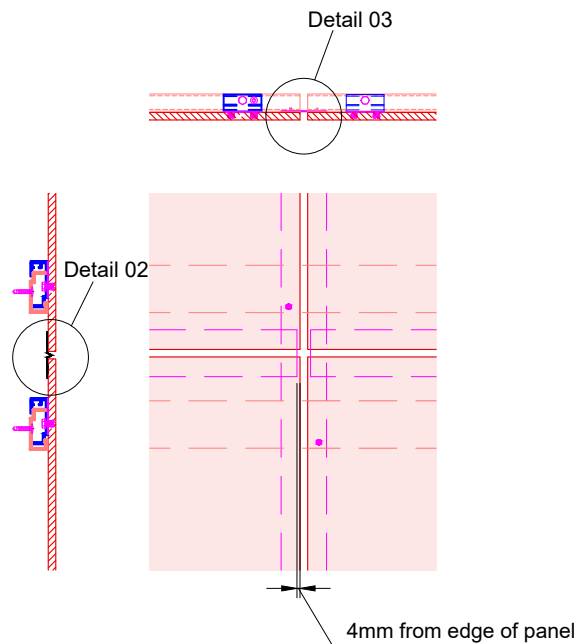
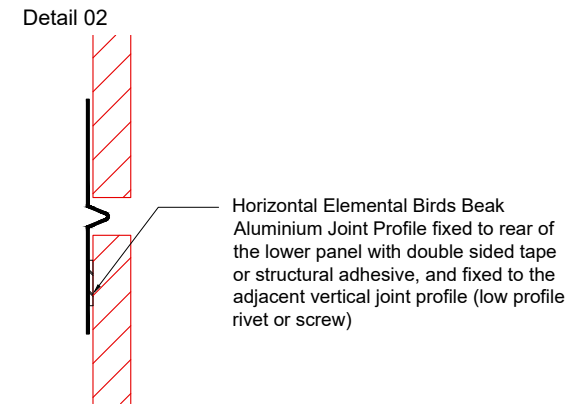
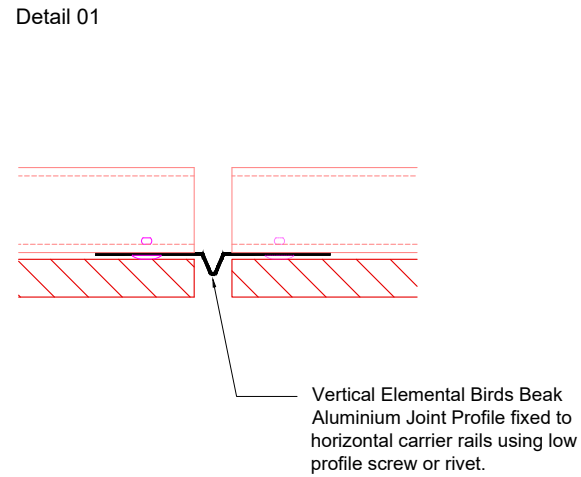
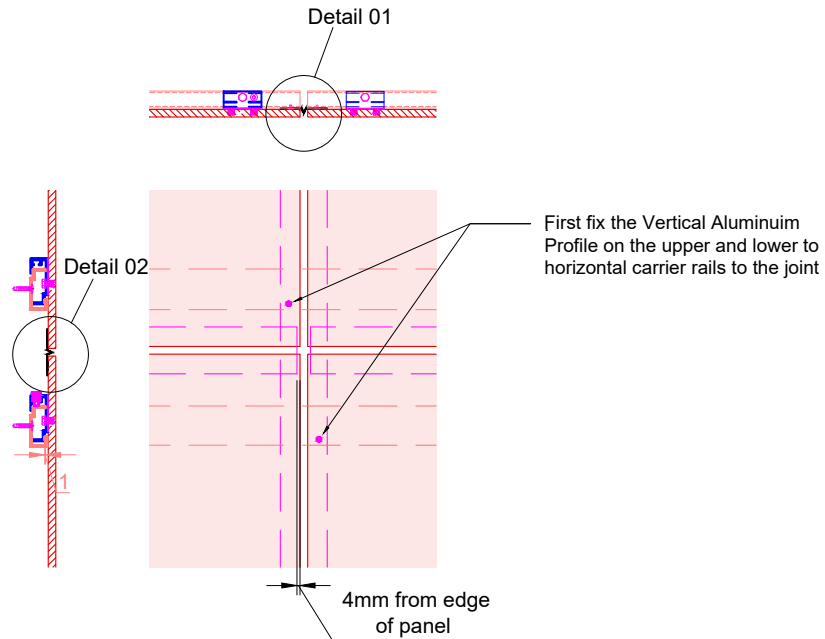
(A) MARTLET DETAIL\*



\*Only available vertical or horizontal on each panel, NOT both.

Dimensions	
a	Insulation thickness (varies)
b	Free vertical ventilation gap
c	Horizontal Carrier rail and Panel Hanger
d	Panel nominal thickness
e	Panel joint - min 10mm
a+b	Clad Zone

These drawings are indicative only, for use as a guide. The customer is always responsible for any specific design, structural calculations and calculating exact sizes & quantities of panels. Any project details and calculations supplied by Elemental Architectural Cladding Specialists are provided in good faith and should always be checked and approved by the project engineer responsible. Elemental Architectural Cladding Specialists will not accept any liability should the system be designed / installed incorrectly.

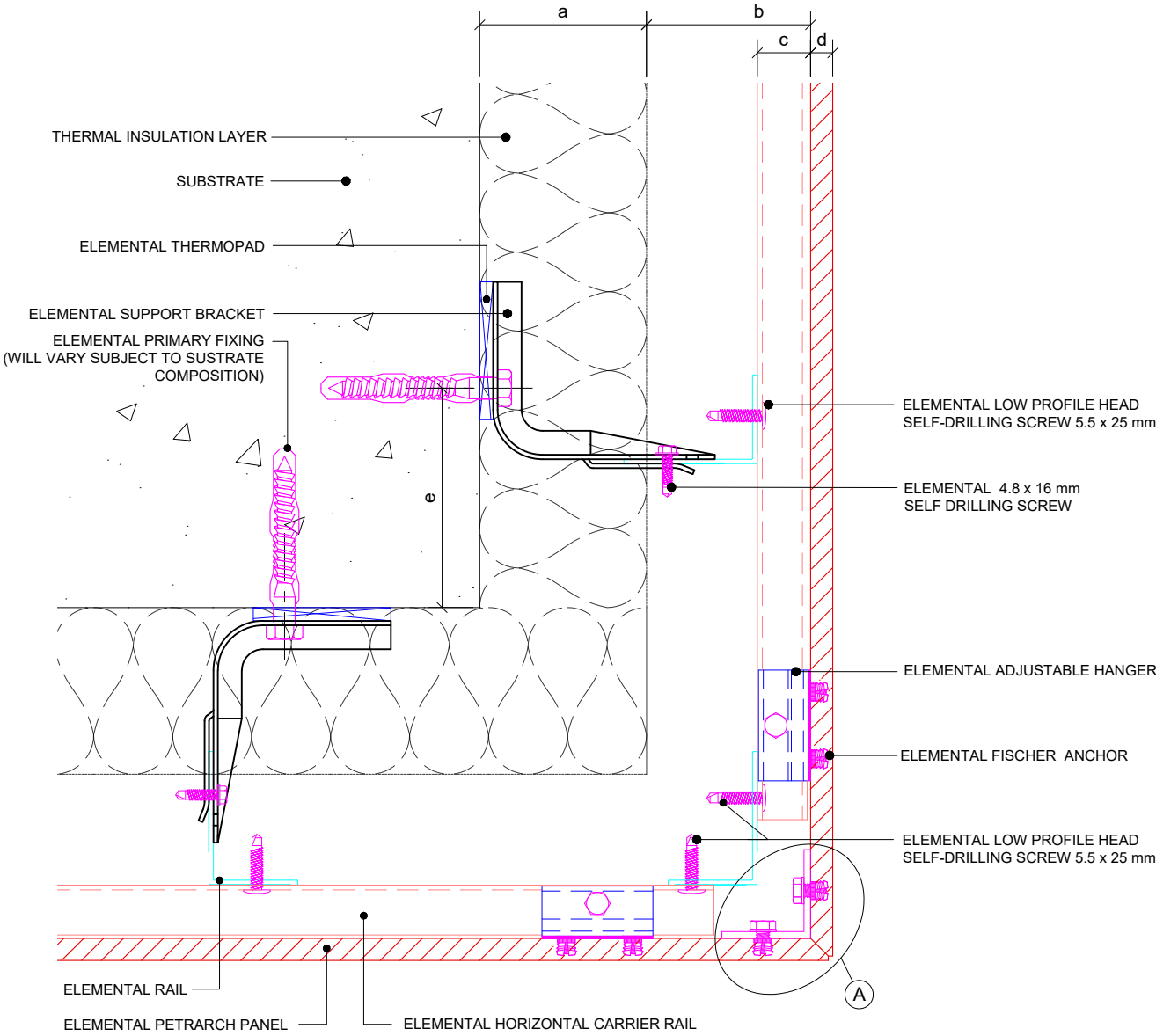


**Elemental Architectural Cladding Specialists**  
 #29 The Cubes Offices, Beacon South Quarter,  
 Sandyford  
 Dublin 18, D18 A264  
 Phone: +353 (0)1 293 8951  
 Email: [info@elemental.ie](mailto:info@elemental.ie)

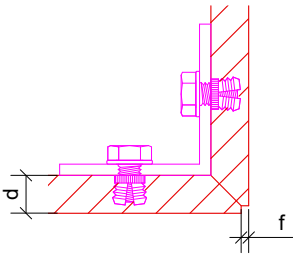
Drawing Title	ELEMENTAL PETRARCH - MSF RAIL SUPPORT AND JOINT DETAIL										
Drawing No.	EL-CB-MP09	System:	EL-MSF Petrarch	Size:	<b>A4</b>	Scale:	<b>NTS</b>	Drawn:	<b>V.C.</b>	Rev.	<b>01</b>

Elemental Architectural Cladding Specialists reserve the right to amend details at any time without prior notice. Reproduction or disclosure to third parties is strictly prohibited and can only be attained through signed, written consent from Elemental ACS.

These drawings are indicative only, for use as a guide. The customer is always responsible for any specific design, structural calculations and calculating exact sizes & quantities of panels. Any project details and calculations supplied by Elemental Architectural Cladding Specialists are provided in good faith and should always be checked and approved by the project engineer responsible. Elemental Architectural Cladding Specialists will not accept any liability should the system be designed / installed incorrectly.

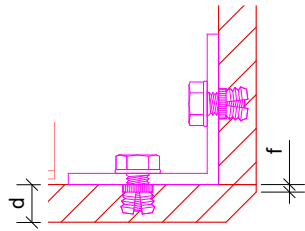


Ⓐ MSF CORNER DETAIL\*



\* Please refer to Elemental technical guide for panel size limitations.

MSF Chamfered corner option\*



\* Please refer to Elemental technical guide for panel size limitations.

Dimensions	
a	Insulation thickness (varies)
b	Free vertical ventilation gap
c	Horizontal Carrier rail and Panel Hanger
d	Panel nominal thickness
e	Min. recommended 100mm
f	2mm Birds Beak Mitre
a+b	Clad Zone



**Elemental Architectural Cladding Specialists**  
#29 The Cubes Offices, Beacon South Quarter,  
Sandyford  
Dublin 18, D18 A264  
Phone: +353 (0)1 293 8951  
Email: info@elemental.ie

Drawing Title

**ELEMENTAL PETRARCH - MSF  
EXTERNAL CORNER DETAIL**

Drawing No.

**EL-CB-MP10**

System:

**EL-MSF  
Petrarch**

Size:

**A4**

Scale:

**NTS**

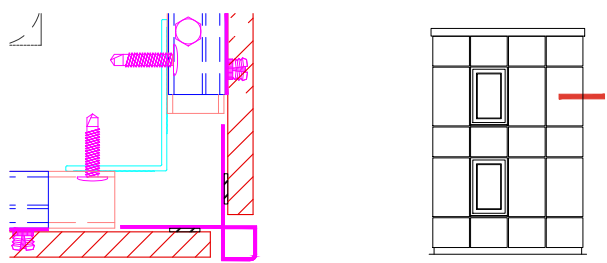
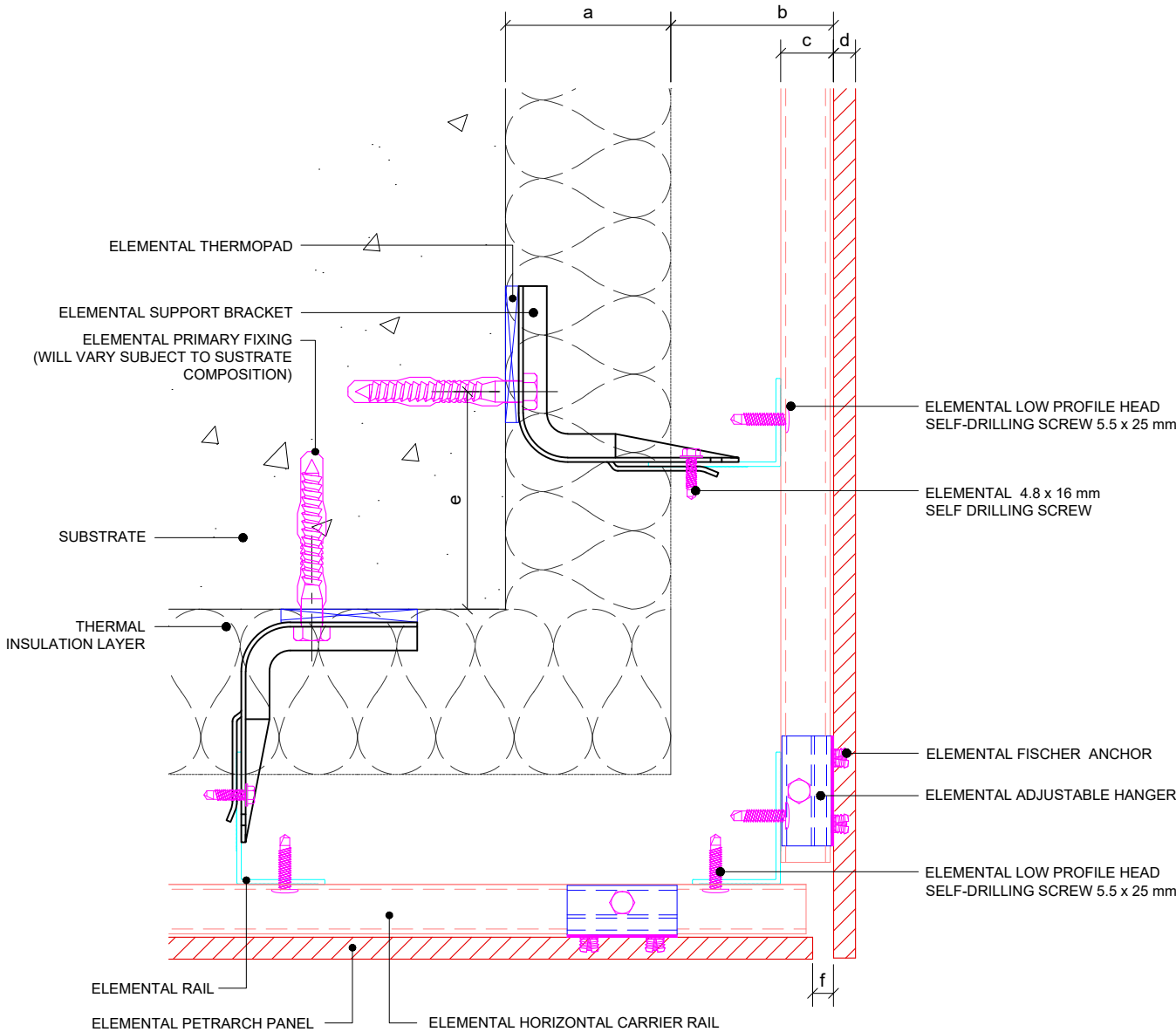
Drawn:

**V.C.**

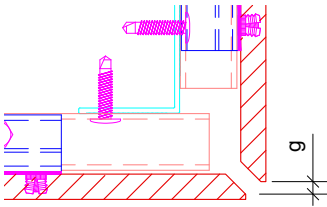
Rev.

**01**

These drawings are indicative only, for use as a guide. The customer is always responsible for any specific design, structural calculations and calculating exact sizes & quantities of panels. Any project details and calculations supplied by Elemental Architectural Cladding Specialists are provided in good faith and should always be checked and approved by the project engineer responsible. Elemental Architectural Cladding Specialists will not accept any liability should the system be designed / installed incorrectly.



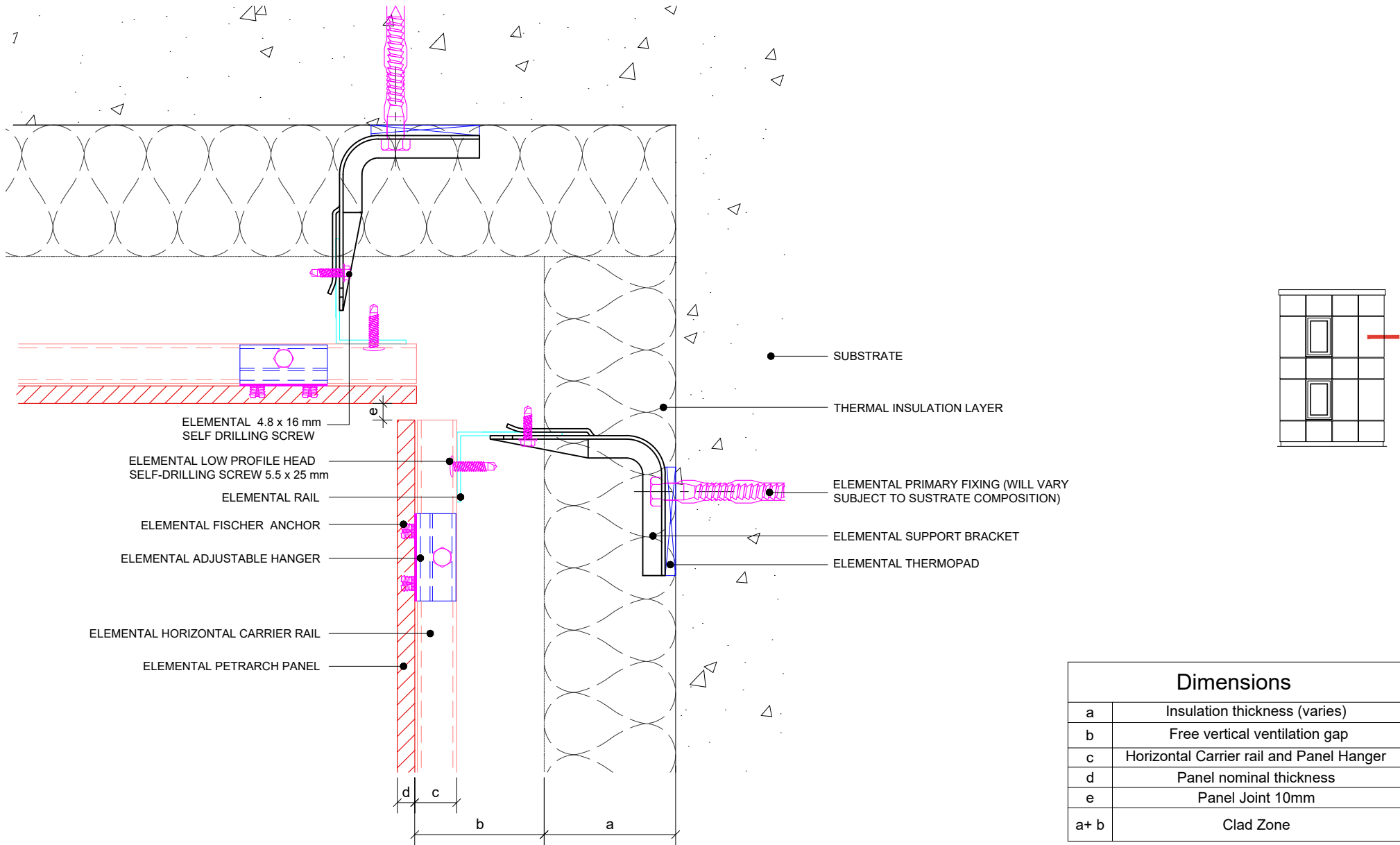
\* Corner profile option



\* Mitred Open Corner option

Dimensions	
a	Insulation thickness (varies)
b	Free vertical ventilation gap
c	Horizontal Carrier rail and Panel Hanger
d	Panel nominal thickness
e	Min. recommended 100mm
f	Panel joint - 10mm
g	Mitred joint projection - 5mm
a+b	Clad Zone

These drawings are indicative only, for use as a guide. The customer is always responsible for any specific design, structural calculations and calculating exact sizes & quantities of panels. Any project details and calculations supplied by Elemental Architectural Cladding Specialists are provided in good faith and should always be checked and approved by the project engineer responsible. Elemental Architectural Cladding Specialists will not accept any liability should the system be designed / installed incorrectly.



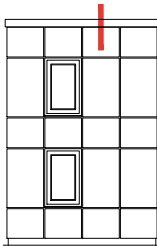
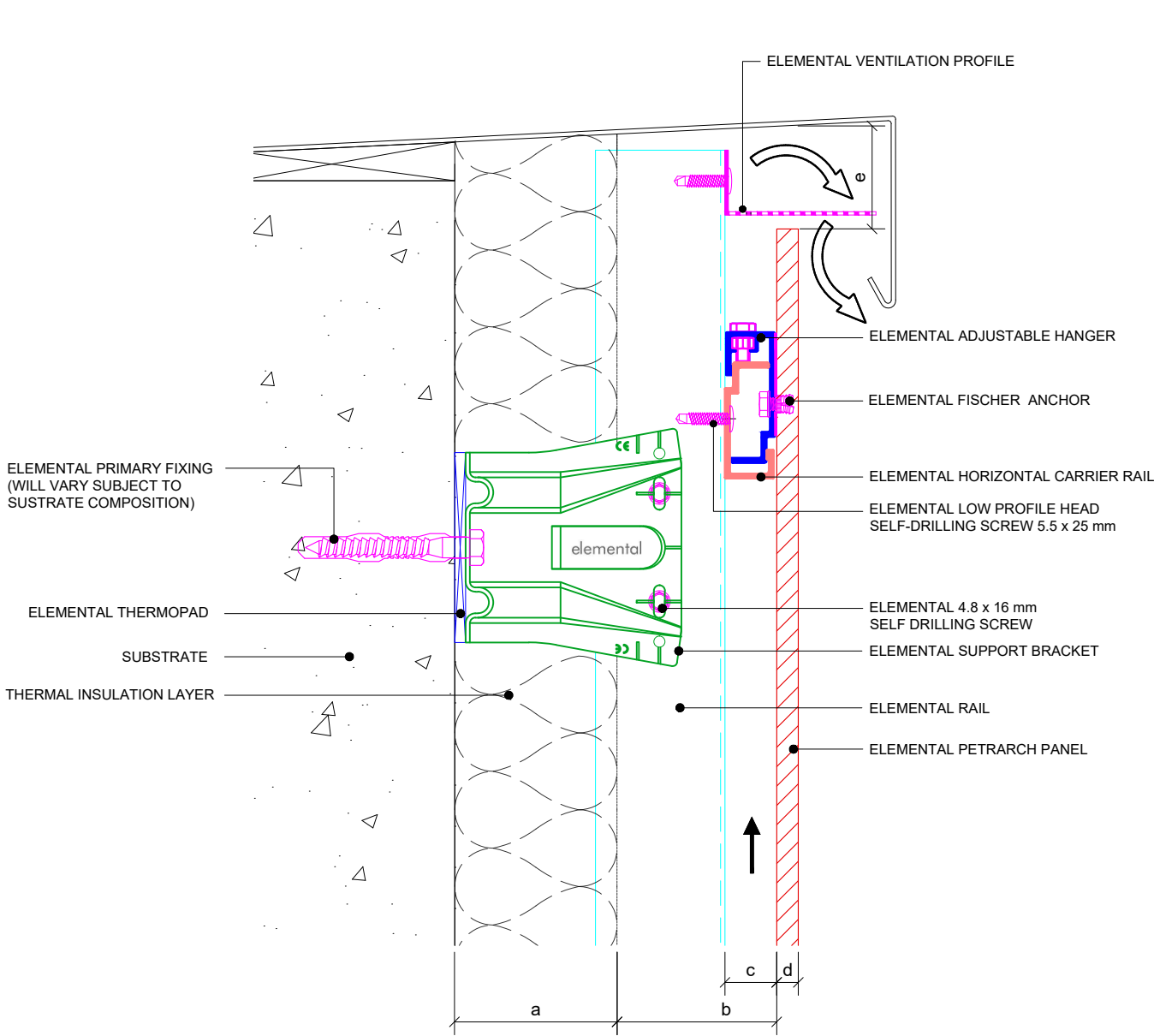
Dimensions	
a	Insulation thickness (varies)
b	Free vertical ventilation gap
c	Horizontal Carrier rail and Panel Hanger
d	Panel nominal thickness
e	Panel Joint 10mm
a+ b	Clad Zone



**Elemental Architectural Cladding Specialists**  
#29 The Cubes Offices, Beacon South Quarter,  
Sandyford  
Dublin 18, D18 A264  
Phone: +353 (0)1 293 8951  
Email: info@elemental.ie

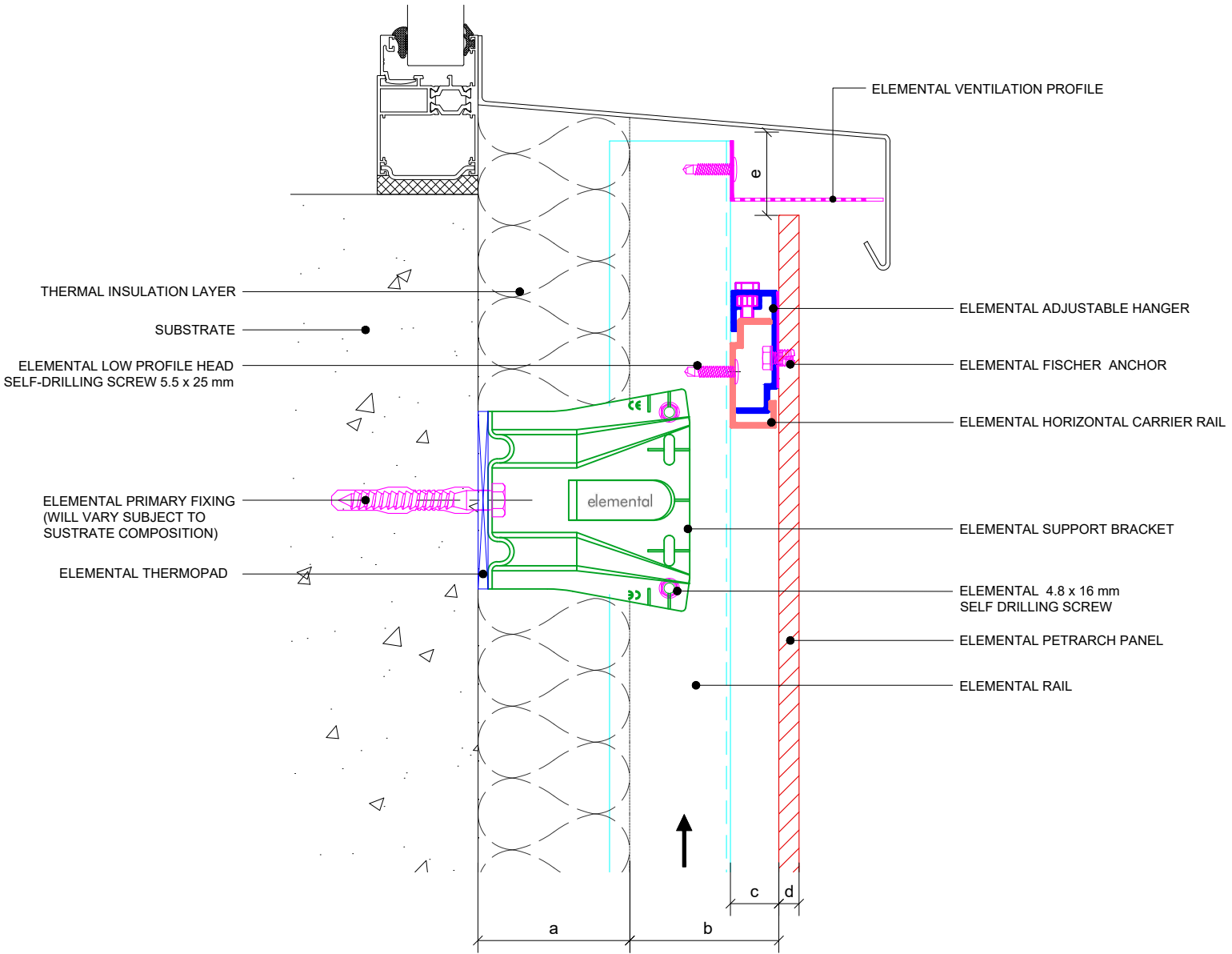
Drawing Title		ELEMENTAL PETRARCH - MSF INTERNAL CORNER - OPEN JOINT OPTION									
Drawing No.	EL-CB-MP12	System:	EL-MSF Petrarch	Size:	A4	Scale:	NTS	Drawn:	V.C.	Rev.	01

These drawings are indicative only, for use as a guide. The customer is always responsible for any specific design, structural calculations and calculating exact sizes & quantities of panels. Any project details and calculations supplied by Elemental Architectural Cladding Specialists are provided in good faith and should always be checked and approved by the project engineer responsible. Elemental Architectural Cladding Specialists will not accept any liability should the system be designed / installed incorrectly.



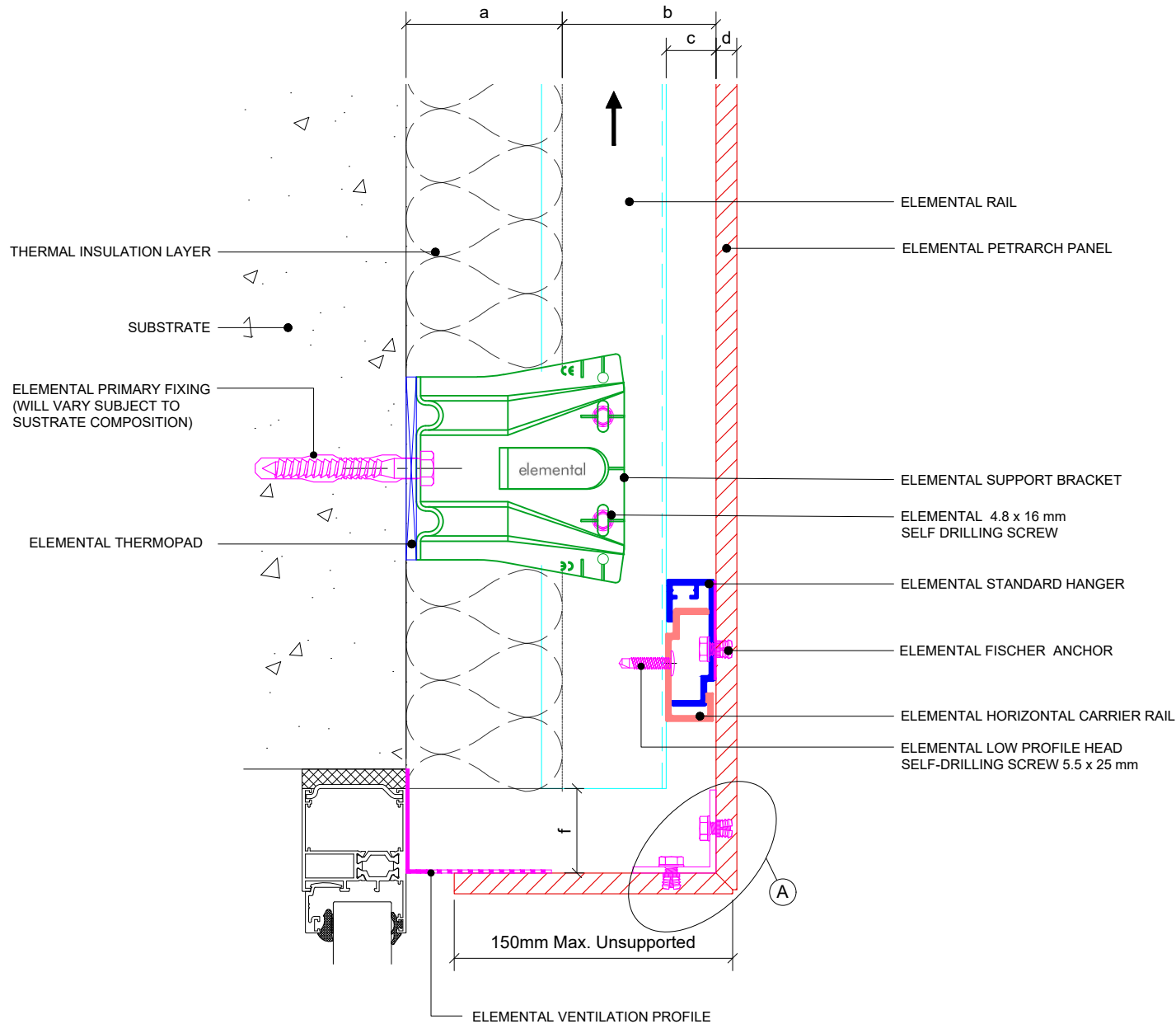
Dimensions	
a	Insulation thickness (varies)
b	Free vertical ventilation gap
c	Horizontal Carrier rail and Panel Hanger
d	Panel nominal thickness
e	Ventilation - inlet & outlet ventilation gaps
a+b	Clad Zone

These drawings are indicative only, for use as a guide. The customer is always responsible for any specific design, structural calculations and calculating exact sizes & quantities of panels. Any project details and calculations supplied by Elemental Architectural Cladding Specialists are provided in good faith and should always be checked and approved by the project engineer responsible. Elemental Architectural Cladding Specialists will not accept any liability should the system be designed / installed incorrectly.

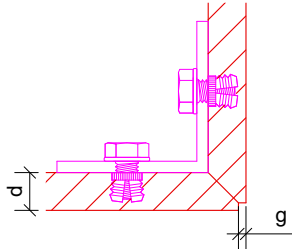


Dimensions	
a	Insulation thickness (varies)
b	Free vertical ventilation gap
c	Horizontal Carrier rail and Panel Hanger
d	Panel nominal thickness
e	Ventilation - inlet & outlet ventilation gaps
a+b	Clad Zone

These drawings are indicative only, for use as a guide. The customer is always responsible for any specific design, structural calculations and calculating exact sizes & quantities of panels. Any project details and calculations supplied by Elemental Architectural Cladding Specialists are provided in good faith and should always be checked and approved by the project engineer responsible. Elemental Architectural Cladding Specialists will not accept any liability should the system be designed / installed incorrectly.

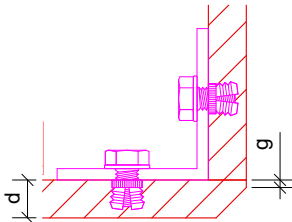


Ⓐ MSF CORNER DETAIL\*



\* Please refer to Elemental Petrarch technical guide for panel size limitations.

MSF Chamfered corner option\*

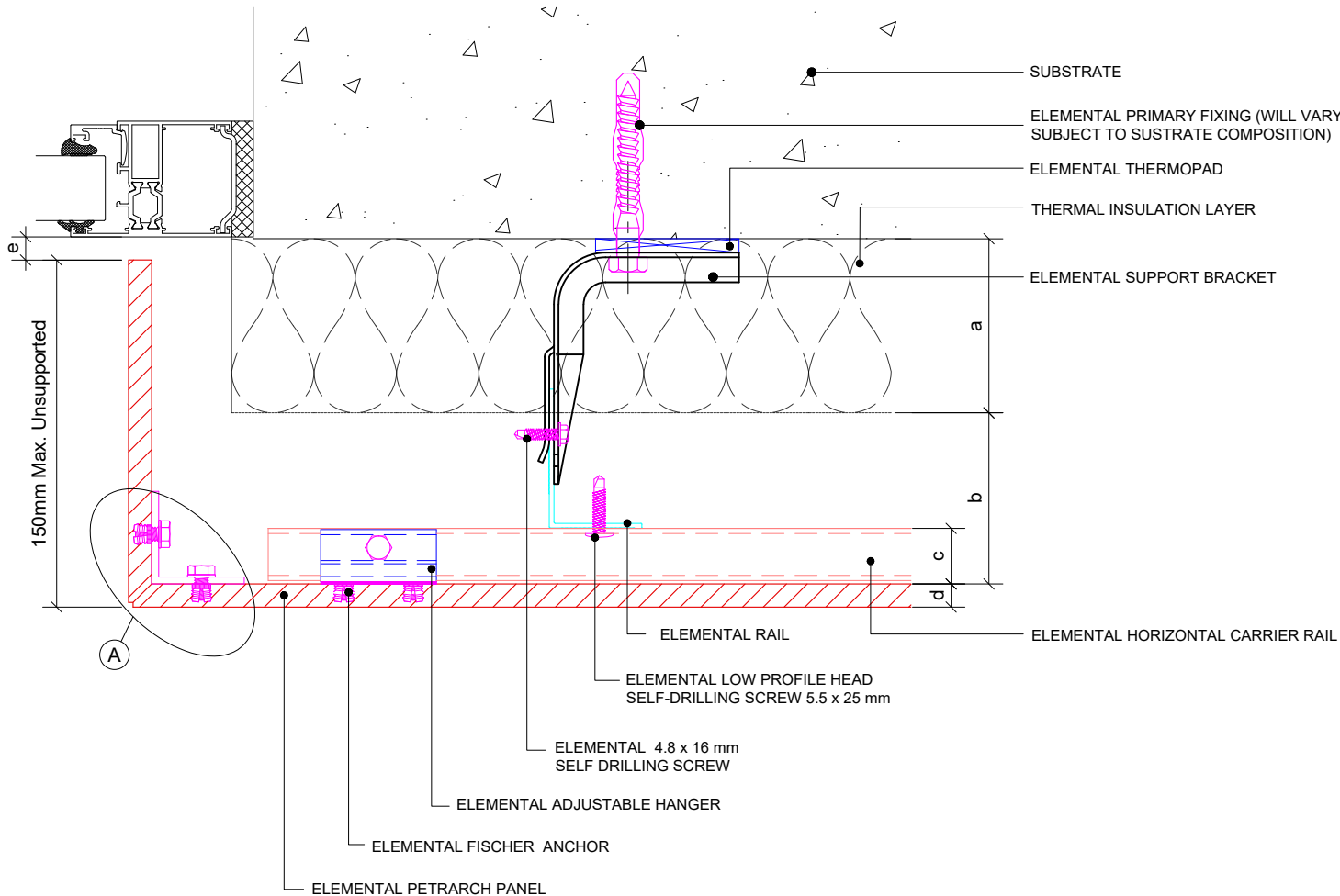


\* Please refer to Elemental Petrarch technical guide for panel size limitations.

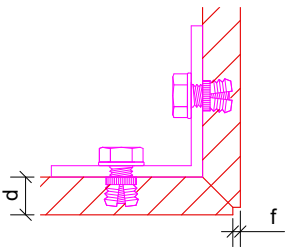
Dimensions	
a	Insulation thickness (varies)
b	Free vertical ventilation gap
c	Horizontal Carrier rail and Panel Hanger
d	Panel nominal thickness
e	Ventilation - inlet & outlet ventilation gaps
f	A lift of 20mm will allow the panel hanger to clear the horizontal rail. Therefore we advise a minimum of 25mm clearance gap for ease of installation.
g	2mm Birds Beak Mitre
a+b	Clad Zone



These drawings are indicative only, for use as a guide. The customer is always responsible for any specific design, structural calculations and calculating exact sizes & quantities of panels. Any project details and calculations supplied by Elemental Architectural Cladding Specialists are provided in good faith and should always be checked and approved by the project engineer responsible. Elemental Architectural Cladding Specialists will not accept any liability should the system be designed / installed incorrectly.

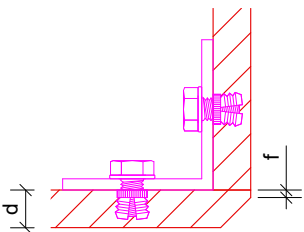


A MSF CORNER DETAIL \*



\* Please refer to Elemental Petrarch technical guide for panel size limitations.

MSF Chamfered corner option\*



\* Please refer to Elemental Petrarch technical guide for panel size limitations.

Dimensions

a	Insulation thickness (varies)
b	Free vertical ventilation gap
c	Horizontal Carrier rail and Panel Hanger
d	Panel nominal thickness
e	Panel joint - 10mm
f	2mm Birds Beak Mitre
a+b	Clad Zone



**Elemental Architectural Cladding Specialists**  
#29 The Cubes Offices, Beacon South Quarter,  
Sandyford  
Dublin 18, D18 A264  
Phone: +353 (0)1 293 8951  
Email: info@elemental.ie

Drawing Title

**ELEMENTAL PETRARCH - MSF  
WINDOW JAMB REVEAL DETAIL**

Drawing No.

**EL-CB-MP16**

System:

**EL-MSF  
Petrarch**

Size:

**A4**

Scale:

**NTS**

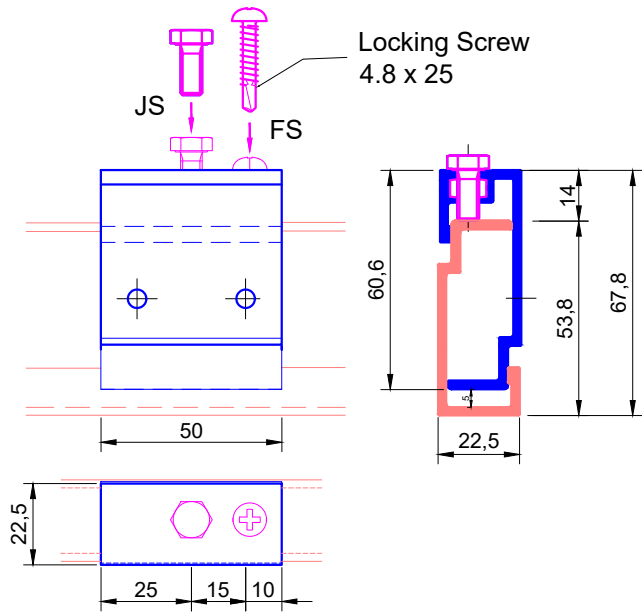
Drawn:

**V.C.**

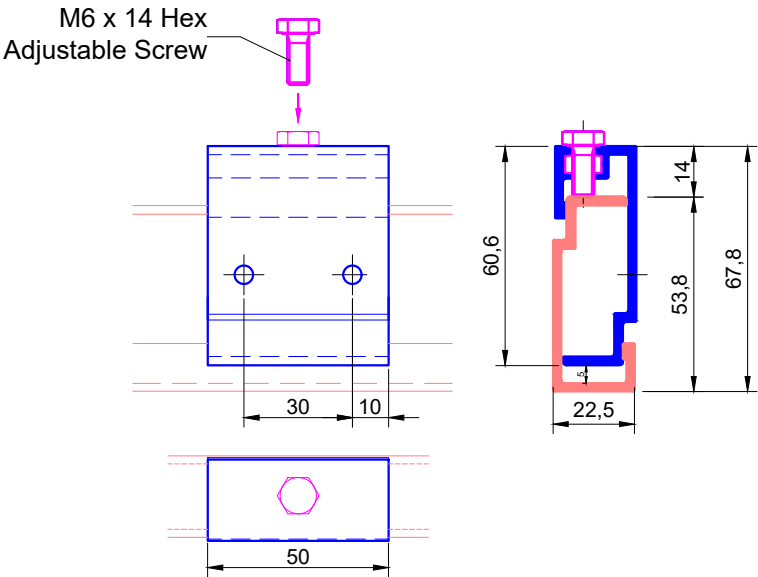
Rev.

**01**

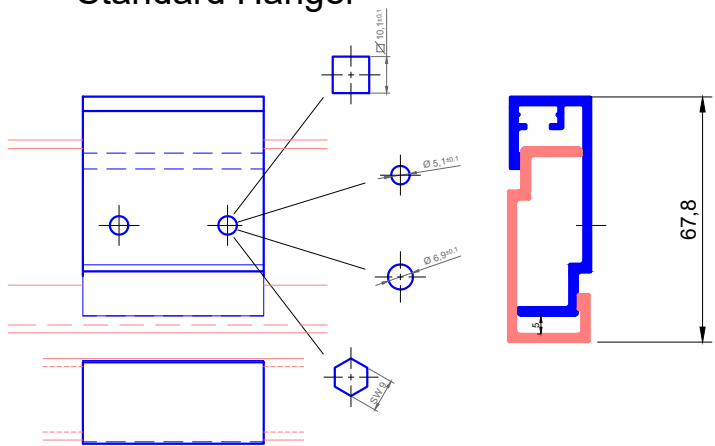
Adjustable Fixed Hanger



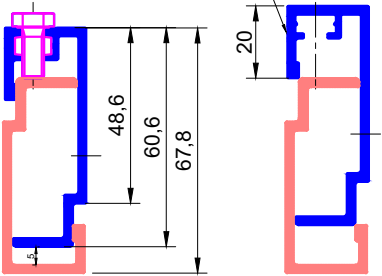
Adjustable Hanger



Standard Hanger



A lift of 20 mm will allow the panel hanger to clear the horizontal rail. We advise a minimum of 25mm clearance gap for ease of installation.



**Elemental Architectural Cladding Specialists**  
#29 The Cubes Offices, Beacon South Quarter,  
Sandyford  
Dublin 18, D18 A264  
Phone: +353 (0)1 293 8951  
Email: info@elemental.ie

Drawing Title

**ELEMENTAL PETRARCH - MSF  
PANEL HANGERS**

Drawing No.

**EL-CB-MP17**

System:

**EL-MSF  
Petrarch**

Size:

**A4**

Scale:

**NTS**

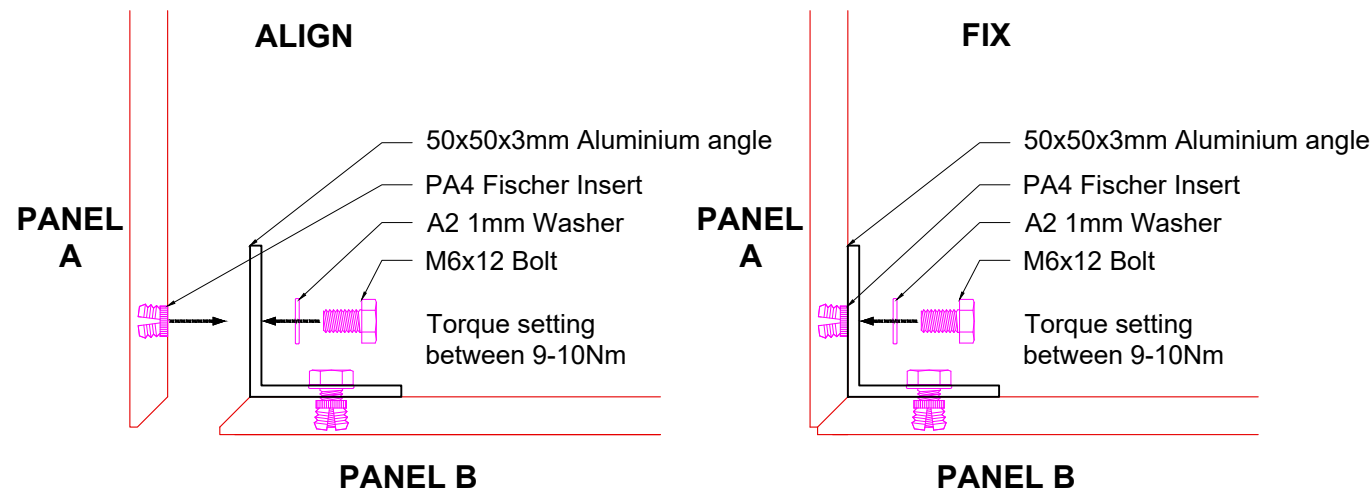
Drawn:

**V.C.**

Rev.

**01**

MSF Corner site assembled installation guidelines



MSF Corner Guidelines & Limitations

UNSUPPORTED RETURN *	SUPPORTED RETURN *
R ≤ 150mm F ≤ 3042mm	R ≤ 1200mm F ≤ 1200mm

2 Sided Corner Limitations

3 Sided Corner Limitations

UNSUPPORTED RETURNS *	ONE RETURN SUPPORTED *	BOTH RETURNS SUPPORTED *
R1 ≤ 150mm R2 ≤ 150mm F ≤ 3042mm	R1 ≤ 150mm R2 ≤ 1200mm F ≤ 1200mm	R1 ≤ 1200mm R2 ≤ 1200mm F ≤ 1200mm R1+F+R2 ≤ 2400mm

\* **Unsupported Return** - Return panels ≤ 150mm are supported only by the 50x50x3mm angle and inserts.  
**Supported Return** - Additional support is required on returns >150mm (additional set of panel hangers, visible fixings, etc.)