

Facade System

Ventilated facade EL-SB-MHU

Elemental-SFS Bracket- MSF Horizontal ULMA

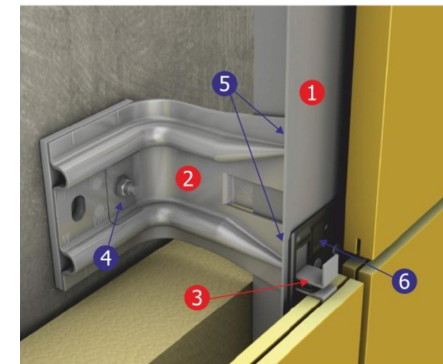
Contents:

EL-SB-MHU01	SYSTEM LAYOUT
EL-SB-MHU02	BRACKET TYPES AVAILABLE
EL-SB-MHU03	BASE DETAIL
EL-SB-MHU04	HORIZONTAL PANEL JOINT DETAIL
EL-SB-MHU05	VERTICAL PANEL JOINT DETAIL
EL-SB-MHU06	SPACER AND LOCKING PIECES - JOINT
EL-SB-MHU07	BUILDING STRUCTURAL MOVEMENT JOINT
EL-SB-MHU08	EXTERNAL CORNER - PROFILE DETAILS
EL-SB-MHU09	EXTERNAL CORNER - OPEN CORNER OPTION
EL-SB-MHU10	GENERIC PARAPET DETAIL
EL-SB-MHU11	WINDOW CILL DETAIL
EL-SB-MHU12	WINDOW HEAD DETAIL
EL-SB-MHU13	WINDOW JAMB REVEAL DETAIL

ULMA, Polymer Concrete

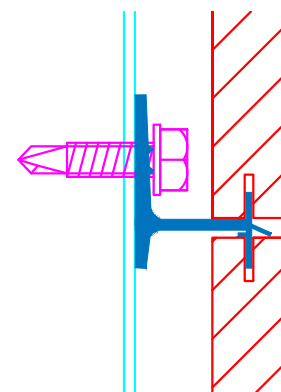
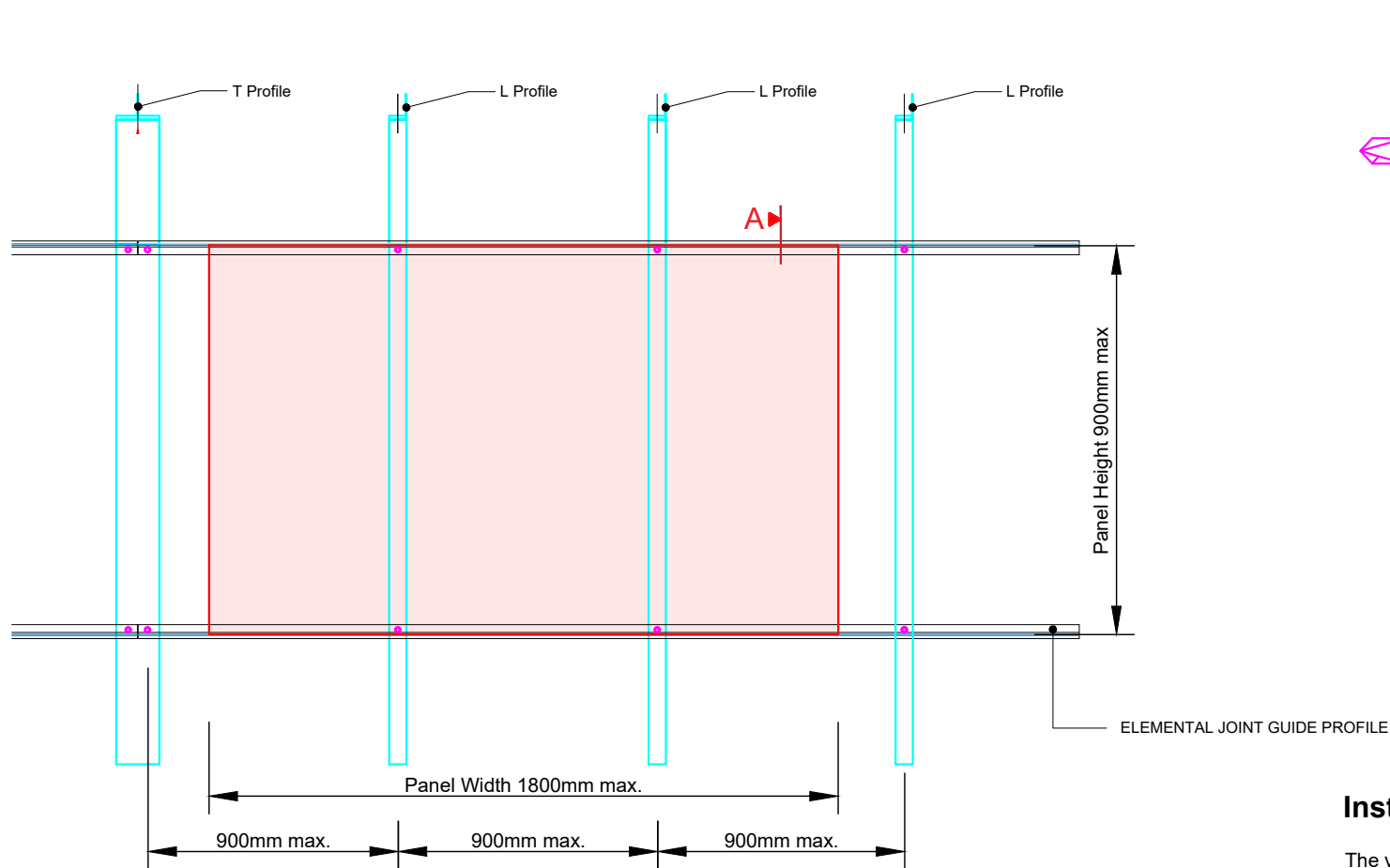
Mechanical Secret Fix onto 2-layer

Metal substructure



- 1 'U' or 'T' Rail
 - 2 Support Bracket
 - 3 Panel Support Clip or Continuous Rail
- FIXINGS:**
- 4 Bracket to Wall Fixings/Anchors
 - 5 Rail to Bracket Fixings
 - 6 Clip/Rail to Vertical Rail Fixing

These drawings are indicative only, for use as a guide. The customer is always responsible for any specific design, structural calculations and calculating exact sizes & quantities of panels. Any project details and calculations supplied by Elemental Architectural Cladding Specialists are provided in good faith and should always be checked and approved by the project engineer responsible. Elemental Architectural Cladding Specialists will not accept any liability should the system be designed / installed incorrectly.



SECTION A

Installing Vertical L and T Rails

The vertical L & T-rails will be installed at a maximum distance of 90 cm. The flatness of the L & T-rails framework must be guaranteed using a suitable anchoring system, in order to ensure that the cladding system has the correct flatness. The perfectly aligned and plumbed L&T-rails will be secured to the brackets with fixed and slotted holes, so they guarantee sufficient movement of the substructure.



Elemental Architectural Cladding Specialists
 #29 The Cubes Offices, Beacon South Quarter,
 Sandyford
 Dublin 18, D18 A264
 Phone: +353 (0)1 293 8951
 Email: info@elemental.ie

Drawing Title

**ELEMENTAL ULMA - MSF - HORIZONTAL SYSTEM
 SYSTEM LAYOUT**

Drawing No.

EL-SB-MHU01

System:

EL-MSF
 HZ-ULMA

Size:

A4

Scale:

NTS

Drawn:

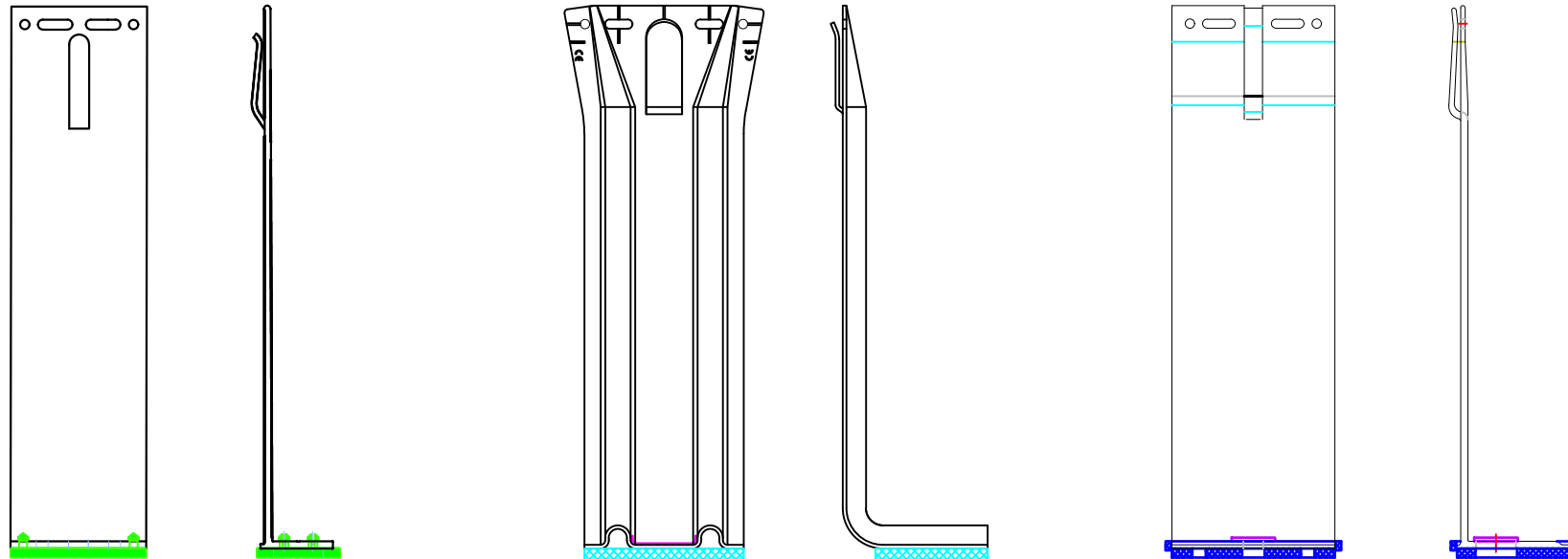
V.C.

Rev.

01

These drawings are indicative only, for use as a guide. The customer is always responsible for any specific design, structural calculations and calculating exact sizes & quantities of panels. Any project details and calculations supplied by Elemental Architectural Cladding Specialists are provided in good faith and should always be checked and approved by the project engineer responsible. Elemental Architectural Cladding Specialists will not accept any liability should the system be designed / installed incorrectly.

BRACKET TYPES AVAILABLE FROM ELEMENTAL



Elemental Architectural Cladding Specialists
 #29 The Cubes Offices, Beacon South Quarter,
 Sandyford
 Dublin 18, D18 A264
 Phone: +353 (0)1 293 8951
 Email: info@elemental.ie

Drawing Title

BRACKET TYPES AVAILABLE

Drawing No.

EL-SB-MHU02

System:

EL-MSF
HZ ULMA

Size:

A4

Scale:

NTS

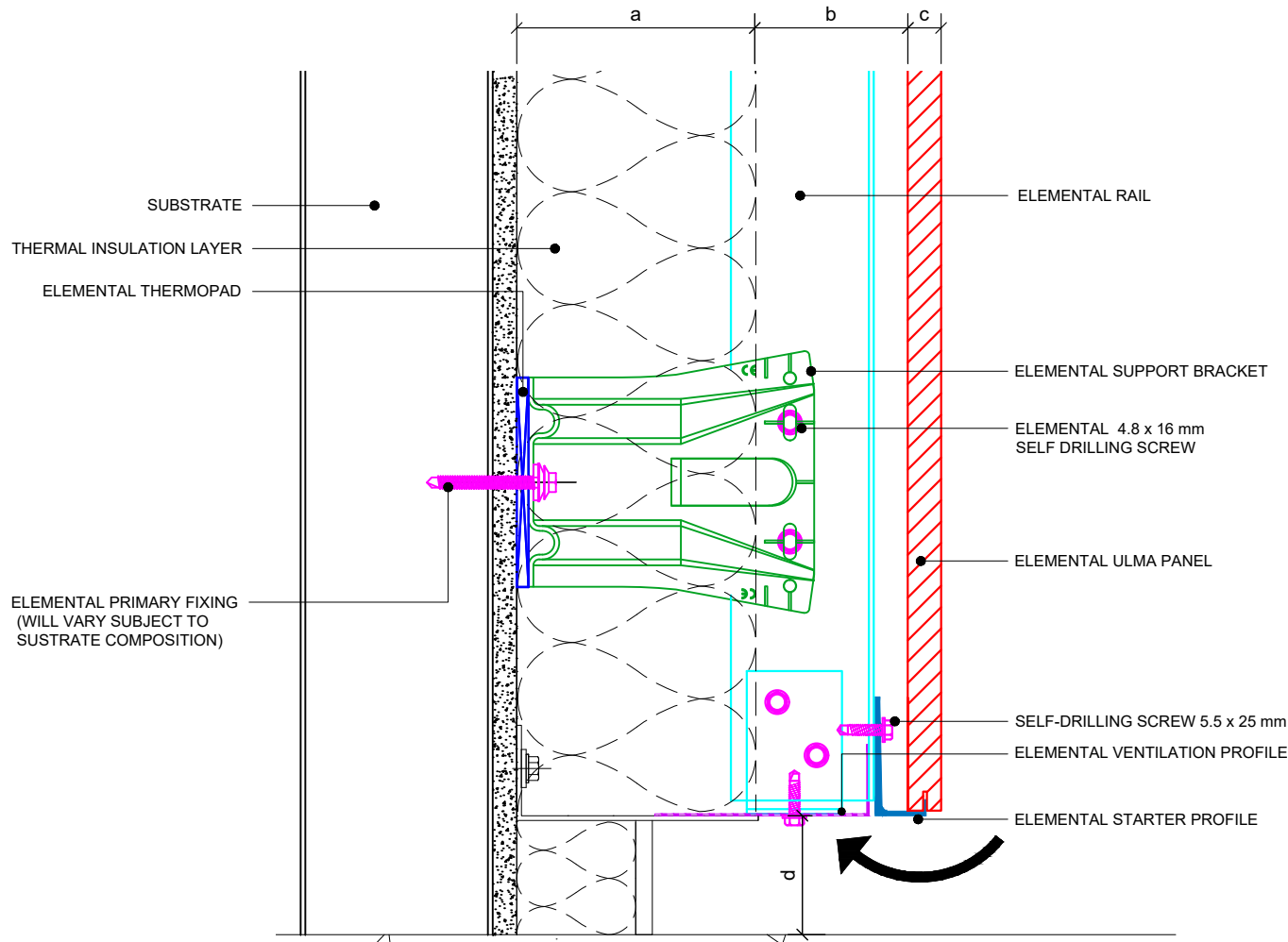
Drawn:

V.C.

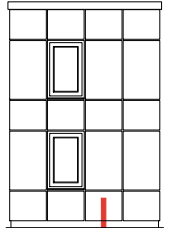
Rev.

01

These drawings are indicative only, for use as a guide. The customer is always responsible for any specific design, structural calculations and calculating exact sizes & quantities of panels. Any project details and calculations supplied by Elemental Architectural Cladding Specialists are provided in good faith and should always be checked and approved by the project engineer responsible. Elemental Architectural Cladding Specialists will not accept any liability should the system be designed / installed incorrectly.



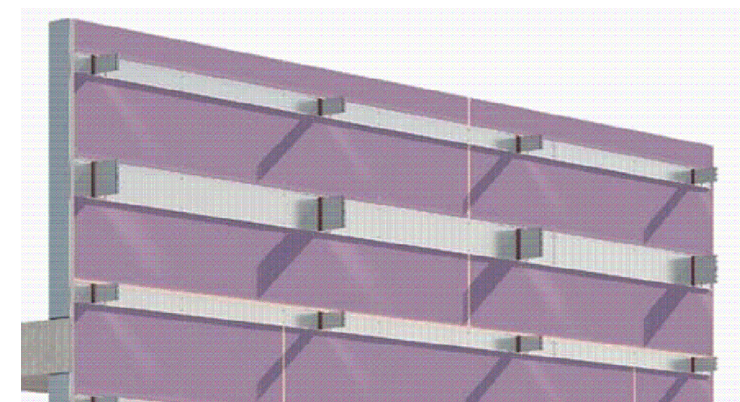
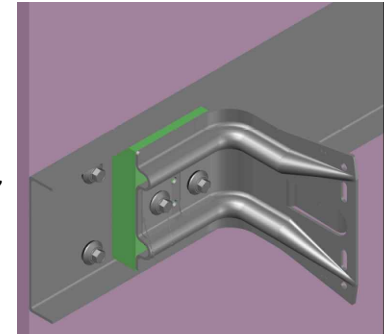
Dimensions	
a	Insulation thickness (varies)
b	Free vertical ventilation gap
c	Panel nominal thickness
d	Base distance - Minimum 50mm
a+b	Clad Zone



ELEMENTAL PRIMARY FIXING
(WILL VARY SUBJECT TO
SUSTRATE COMPOSITION)

Note:

“In the event that the subframe brackets do not line up with the vertical steel studs a horizontal galvanised stud maybe required”



elemental
Architectural Cladding Specialists

Elemental Architectural Cladding Specialists

#29 The Cubes Offices, Beacon South Quarter,
Sandyford

Dublin 18, D18 A264

Phone: +353 (0)1 293 8951

Email: info@elemental.ie

Drawing Title

**ELEMENTAL ULMA - MSF - HORIZONTAL SYSTEM
BASE DETAIL**

Drawing No.

EL-SB-MHU03

System:

**EL-MSF
HZ-ULMA**

Size:

A4

Scale:

NTS

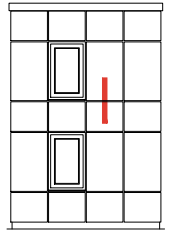
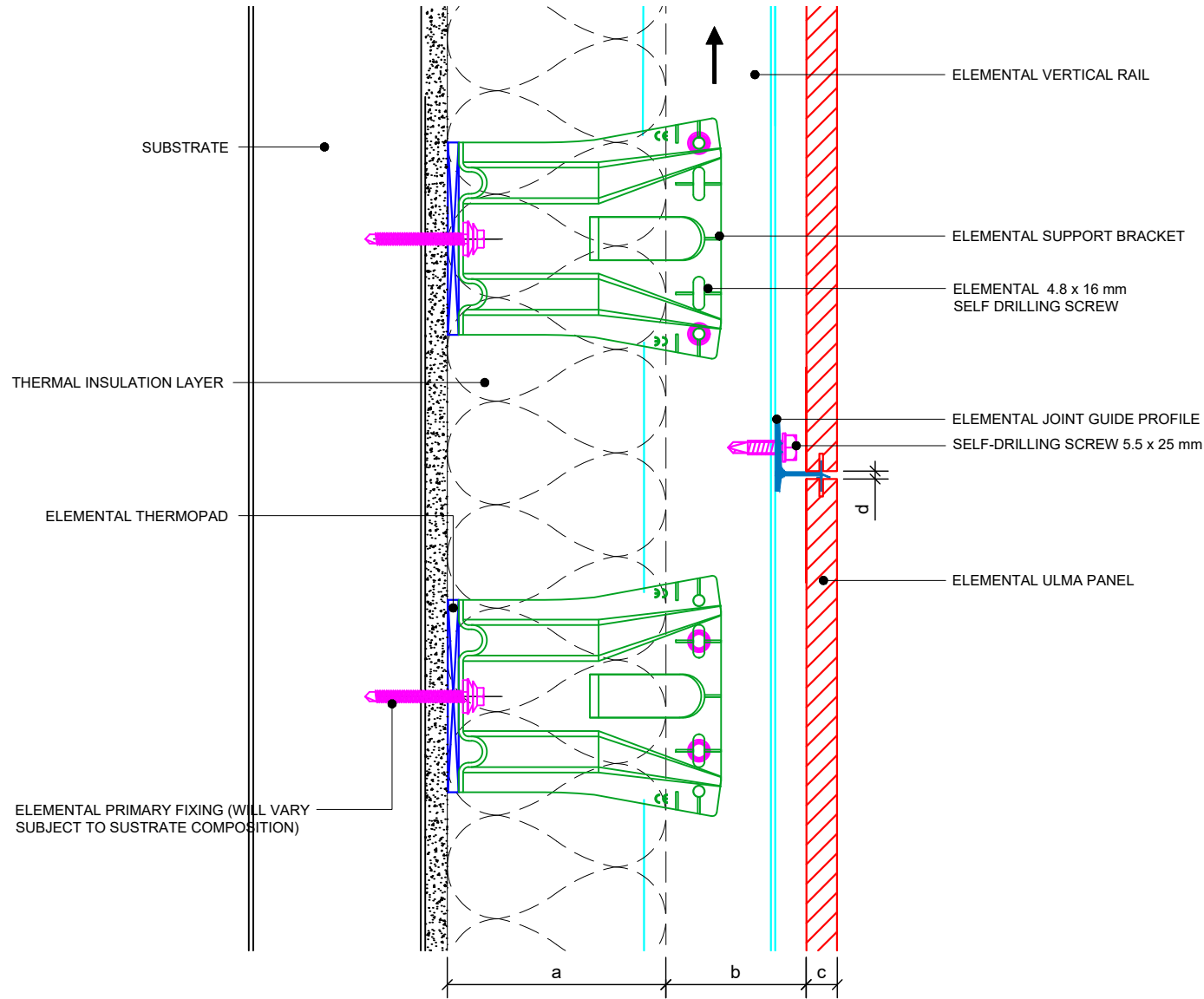
Drawn:

V.C.

Rev.

01

These drawings are indicative only, for use as a guide. The customer is always responsible for any specific design, structural calculations and calculating exact sizes & quantities of panels. Any project details and calculations supplied by Elemental Architectural Cladding Specialists are provided in good faith and should always be checked and approved by the project engineer responsible. Elemental Architectural Cladding Specialists will not accept any liability should the system be designed / installed incorrectly.



Dimensions	
a	Insulation thickness (varies)
b	Free vertical ventilation gap
c	Panel nominal thickness
d	Panel Joint - 3mm
a+b	Clad Zone



Elemental Architectural Cladding Specialists
 #29 The Cubes Offices, Beacon South Quarter,
 Sandyford
 Dublin 18, D18 A264
 Phone: +353 (0)1 293 8951
 Email: info@elemental.ie

Drawing Title

**ELEMENTAL ULMA - MSF - HORIZONTAL SYSTEM
 HORIZONTAL PANEL JOINT DETAIL**

Drawing No.

EL-SB-MHU04

System:

**EL-MSF
 HZ-ULMA**

Size:

A4

Scale:

NTS

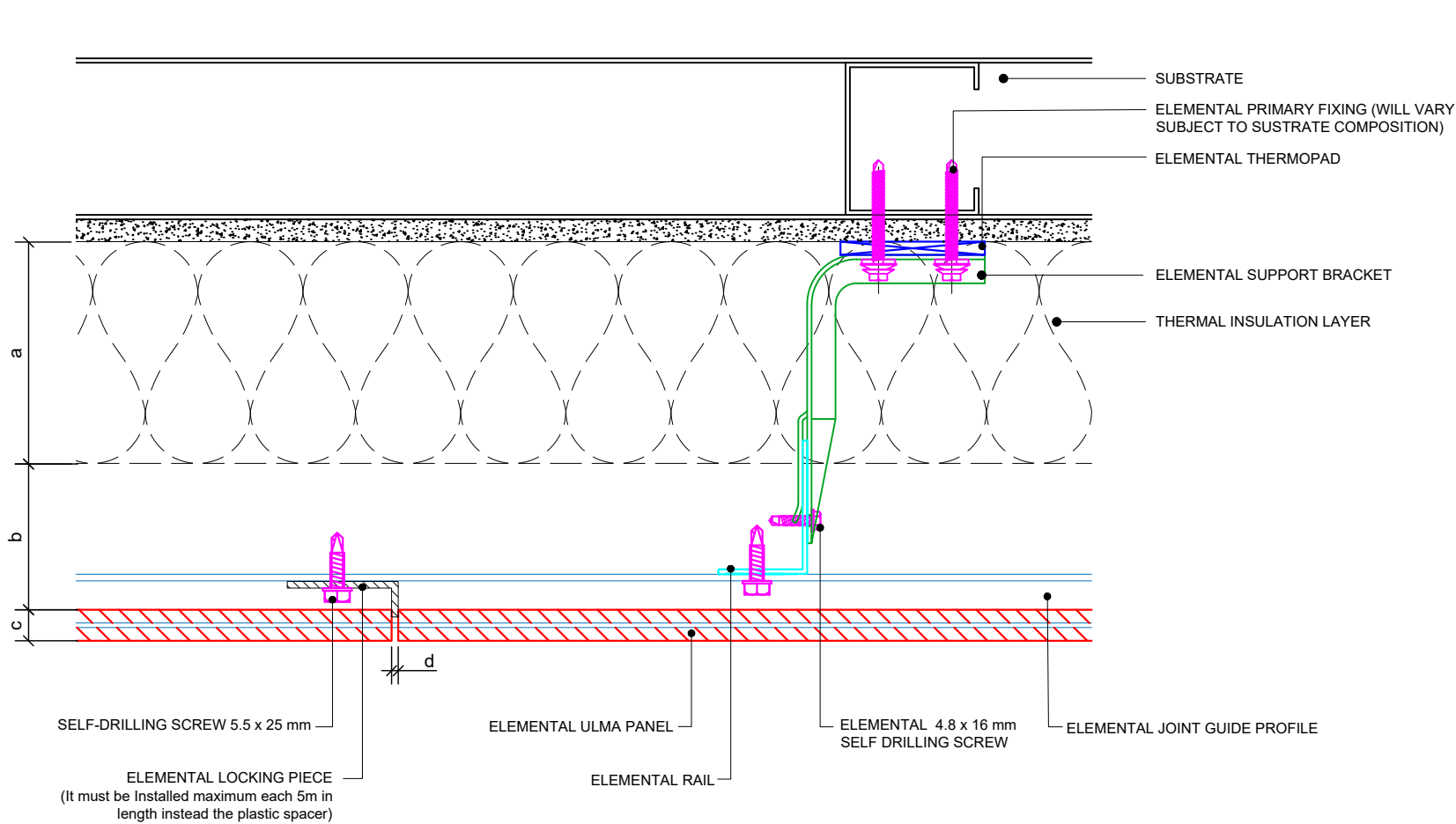
Drawn:

V.C.

Rev.

01

These drawings are indicative only, for use as a guide. The customer is always responsible for any specific design, structural calculations and calculating exact sizes & quantities of panels. Any project details and calculations supplied by Elemental Architectural Cladding Specialists are provided in good faith and should always be checked and approved by the project engineer responsible. Elemental Architectural Cladding Specialists will not accept any liability should the system be designed / installed incorrectly.



Dimensions	
a	Insulation thickness (varies)
b	Free vertical ventilation gap
c	Panel nominal thickness
d	Panel Joint - 3mm
a+b	Clad Zone



Elemental Architectural Cladding Specialists
 #29 The Cubes Offices, Beacon South Quarter,
 Sandyford
 Dublin 18, D18 A264
 Phone: +353 (0)1 293 8951
 Email: info@elemental.ie

Drawing Title

**ELEMENTAL ULMA - MSF- HORIZONTAL SYSTEM
 VERTICAL PANEL JOINT DETAIL**

Drawing No.

EL-SB-MHU05

System:

EL-MSF
 HZ-ULMA

Size:

A4

Scale:

NTS

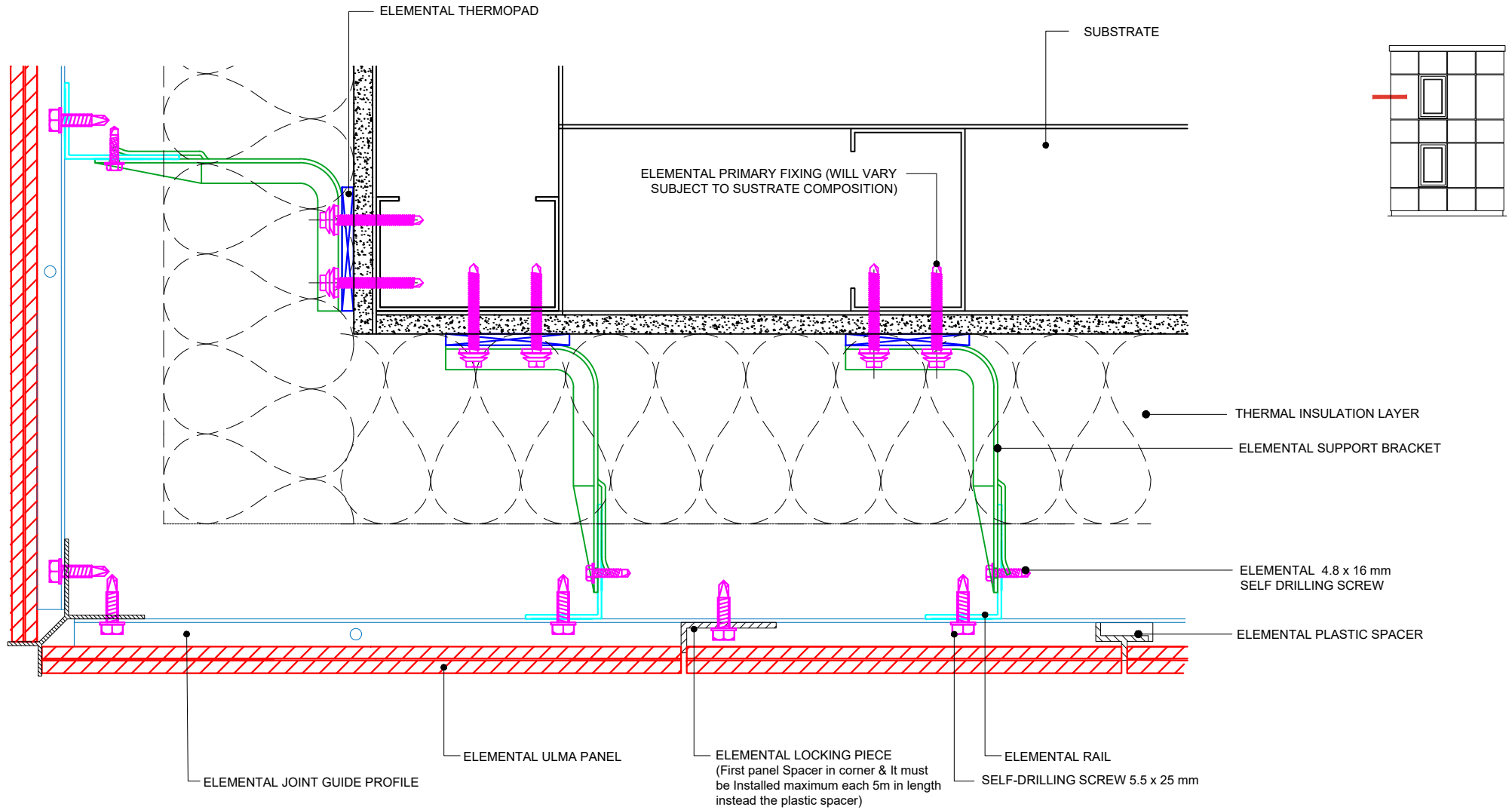
Drawn:

V.C.

Rev.

01

These drawings are indicative only, for use as a guide. The customer is always responsible for any specific design, structural calculations and calculating exact sizes & quantities of panels. Any project details and calculations supplied by Elemental Architectural Cladding Specialists are provided in good faith and should always be checked and approved by the project engineer responsible. Elemental Architectural Cladding Specialists will not accept any liability should the system be designed / installed incorrectly.



Elemental Architectural Cladding Specialists
 #29 The Cubes Offices, Beacon South Quarter,
 Sandyford
 Dublin 18, D18 A264
 Phone: +353 (0)1 293 8951
 Email: info@elemental.ie

Drawing Title

**ELEMENTAL ULMA - MSF - HORIZONTAL SYSTEM
 SPACER AND LOCKING PIECES - JOINT DETAIL**

Drawing No.

EL-SB-MHU06

System:

**EL-MSF
 HZ-ULMA**

Size:

A4

Scale:

NTS

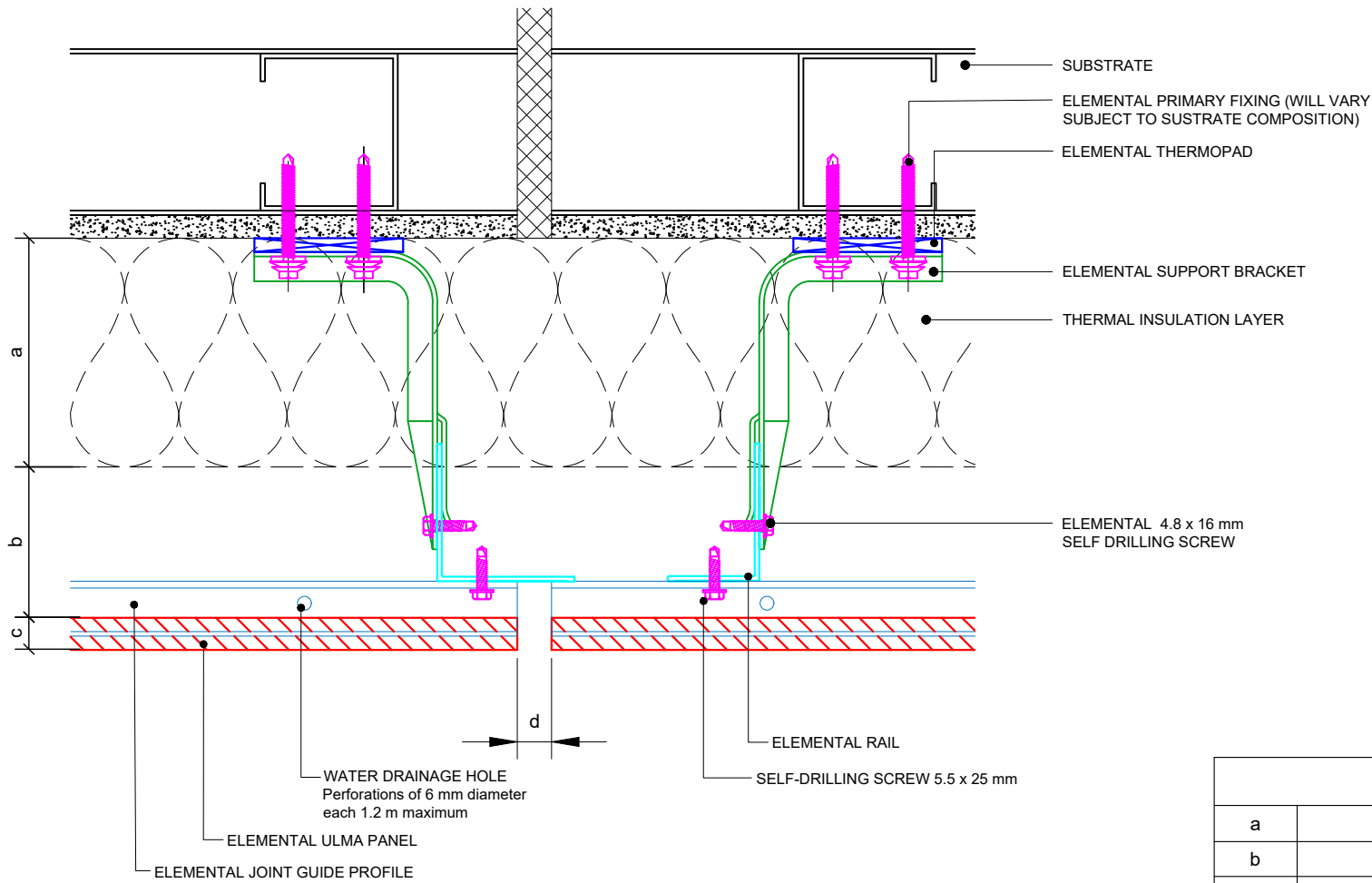
Drawn:

V.C.

Rev.

01

These drawings are indicative only, for use as a guide. The customer is always responsible for any specific design, structural calculations and calculating exact sizes & quantities of panels. Any project details and calculations supplied by Elemental Architectural Cladding Specialists are provided in good faith and should always be checked and approved by the project engineer responsible. Elemental Architectural Cladding Specialists will not accept any liability should the system be designed / installed incorrectly.



Dimensions	
a	Insulation thickness (varies)
b	Free vertical ventilation gap
c	Panel nominal thickness
d	The Building's expansion joints must always coincide with a vertical joint on the ventilated facade (15 to 20 mm)
a+b	Clad Zone



Elemental Architectural Cladding Specialists
 #29 The Cubes Offices, Beacon South Quarter,
 Sandyford
 Dublin 18, D18 A264
 Phone: +353 (0)1 293 8951
 Email: info@elemental.ie

Drawing Title

**ELEMENTAL ULMA - MSF - HORIZONTAL SYSTEM
 BUILDING STRUCTURAL MOVEMENT JOINT**

Drawing No.

EL-SB-MHU07

System:

**EL-MSF
 HZ-ULMA**

Size:

A4

Scale:

NTS

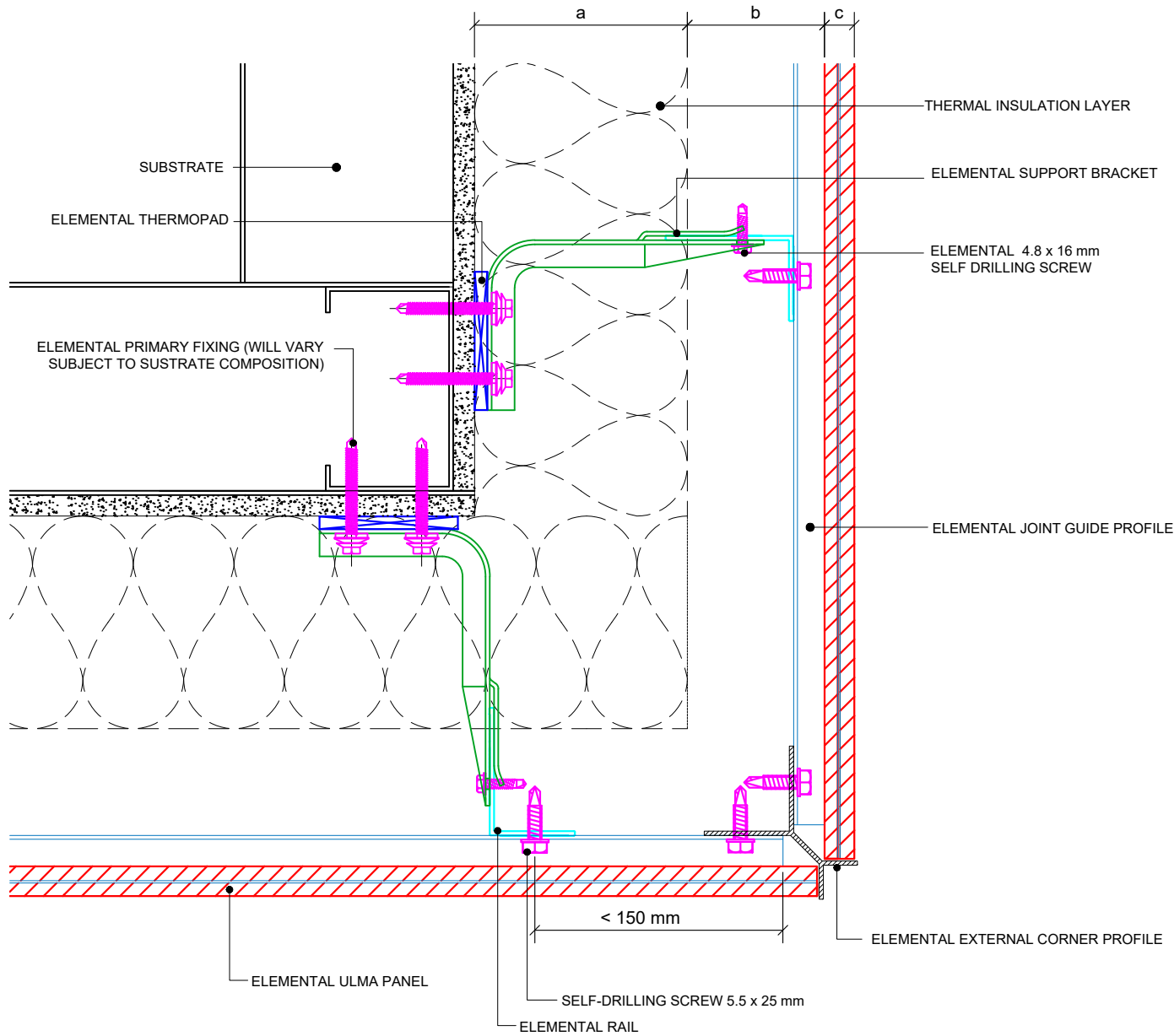
Drawn:

V.C.

Rev.

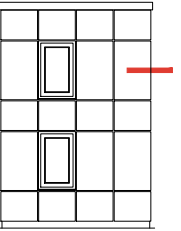
01

These drawings are indicative only, for use as a guide. The customer is always responsible for any specific design, structural calculations and calculating exact sizes & quantities of panels. Any project details and calculations supplied by Elemental Architectural Cladding Specialists are provided in good faith and should always be checked and approved by the project engineer responsible. Elemental Architectural Cladding Specialists will not accept liability if the system is designed or installed incorrectly.

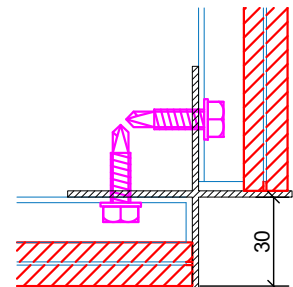


Corner Profile X

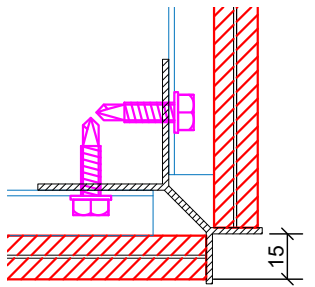
Corner Profile Y



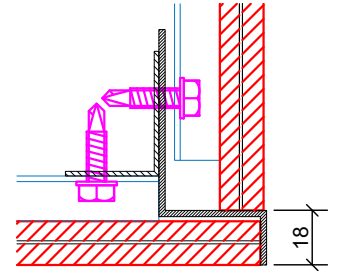
Corner Profile X



Corner Profile Y



Corner Profile Z



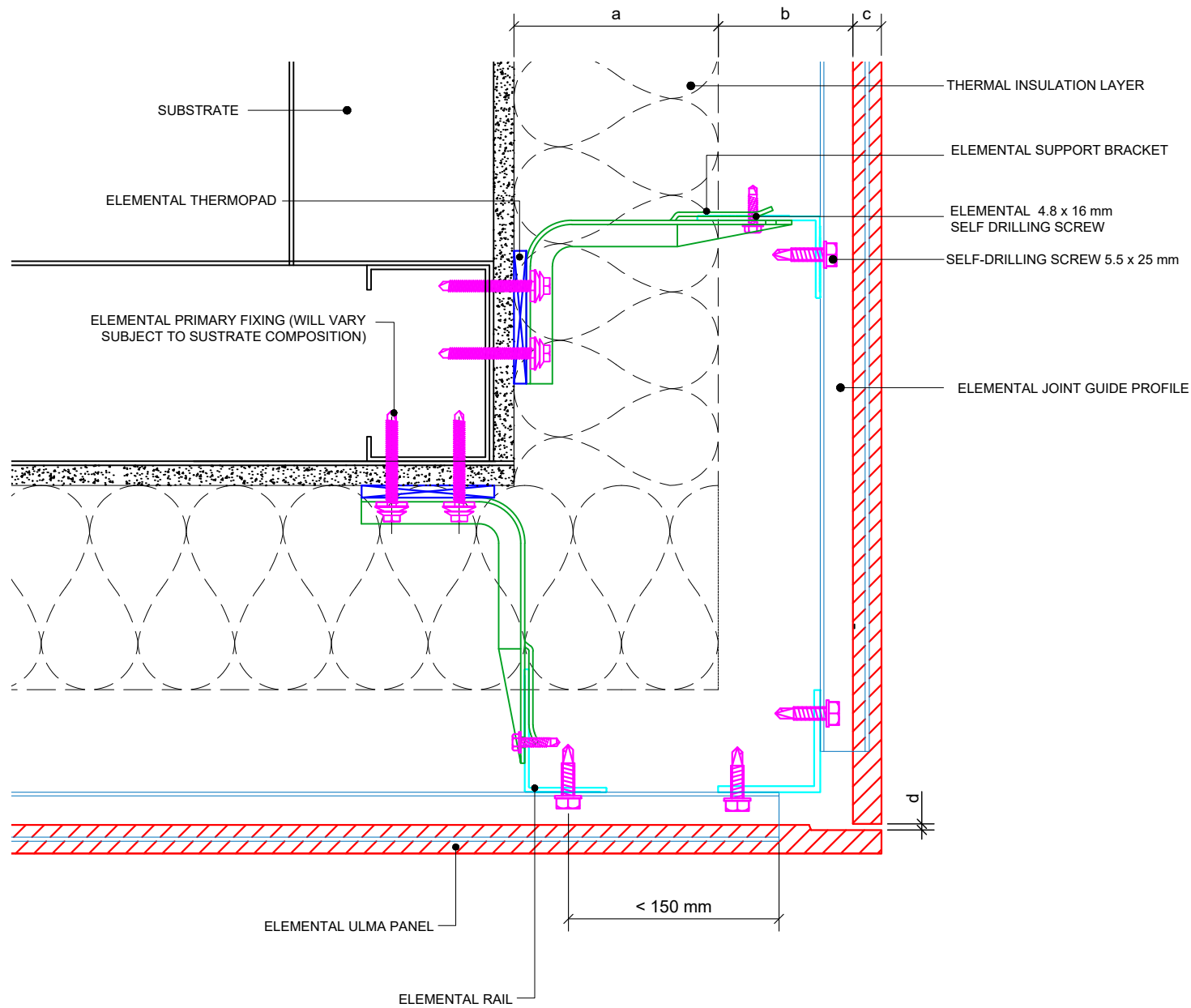
Dimensions	
a	Insulation thickness (varies)
b	Free vertical ventilation gap
c	Panel nominal thickness
a+b	Clad Zone

Elemental Architectural Cladding Specialists
 #29 The Cubes Offices, Beacon South Quarter,
 Sandyford
 Dublin 18, D18 A264
 Phone: +353 (0)1 293 8951
 Email: info@elemental.ie

Drawing Title		ELEMENTAL ULMA - MSF - HORIZONTAL SYSTEM EXTERNAL CORNER PROFILE DETAILS									
Drawing No.	EL-SB-MHU08	System:	EL-MSF HZ-ULMA	Size:	A4	Scale:	NTS	Drawn:	V.C.	Rev.	01

Elemental Architectural Cladding Specialists reserve the right to amend details at any time without prior notice. Reproduction or disclosure to third parties is strictly prohibited and can only be attained through signed, written consent from Elemental ACS.

These drawings are indicative only, for use as a guide. The customer is always responsible for any specific design, structural calculations and calculating exact sizes & quantities of panels. Any project details and calculations supplied by Elemental Architectural Cladding Specialists are provided in good faith and should always be checked and approved by the project engineer responsible. Elemental Architectural Cladding Specialists will not accept any liability should the system be designed / installed incorrectly.



Dimensions	
a	Insulation thickness (varies)
b	Free vertical ventilation gap
c	Panel nominal thickness
d	Panel Joint - 3mm
a+b	Clad Zone



Elemental Architectural Cladding Specialists
 #29 The Cubes Offices, Beacon South Quarter,
 Sandyford
 Dublin 18, D18 A264
 Phone: +353 (0)1 293 8951
 Email: info@elemental.ie

Drawing Title

**ELEMENTAL ULMA - MSF - HORIZONTAL SYSTEM
 EXTERNAL CORNER - OPEN CORNER OPTION**

Drawing No.

EL-SB-MHU09

System:

**EL-MSF
 HZ-ULMA**

Size:

A4

Scale:

NTS

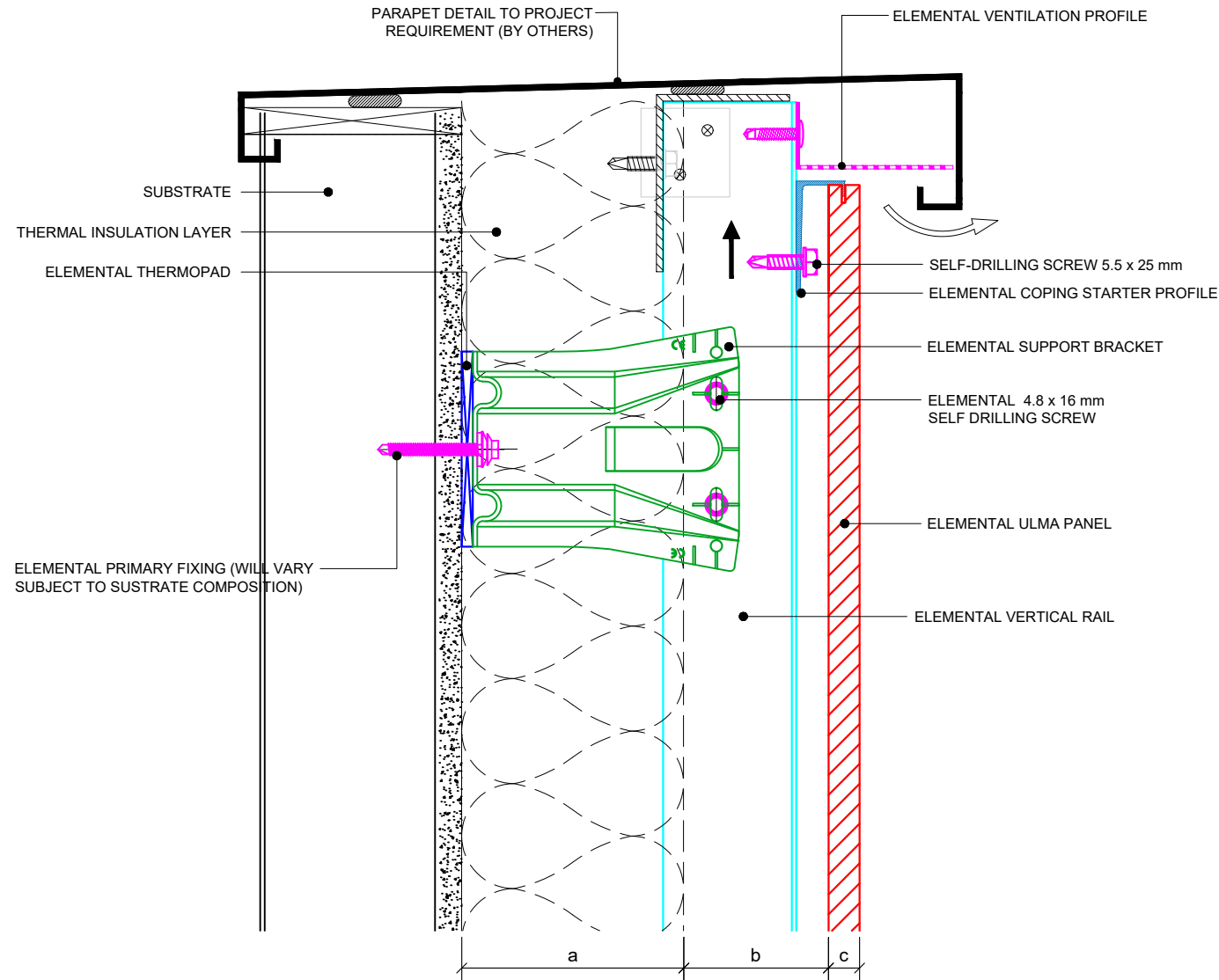
Drawn:

V.C.

Rev.

01

These drawings are indicative only, for use as a guide. The customer is always responsible for any specific design, structural calculations and calculating exact sizes & quantities of panels. Any project details and calculations supplied by Elemental Architectural Cladding Specialists are provided in good faith and should always be checked and approved by the project engineer responsible. Elemental Architectural Cladding Specialists will not accept any liability should the system be designed / installed incorrectly.



Dimensions	
a	Insulation thickness (varies)
b	Free vertical ventilation gap
c	Panel nominal thickness
a+b	Clad Zone



Elemental Architectural Cladding Specialists
 #29 The Cubes Offices, Beacon South Quarter,
 Sandyford
 Dublin 18, D18 A264
 Phone: +353 (0)1 293 8951
 Email: info@elemental.ie

Drawing Title

**ELEMENTAL ULMA - MSF- HORIZONTAL SYSTEM
 GENERIC PARAPET DETAIL**

Drawing No.

EL-SB-MHU10

System:

EL-MSF
 HZ-ULMA

Size:

A4

Scale:

NTS

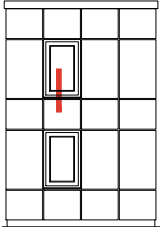
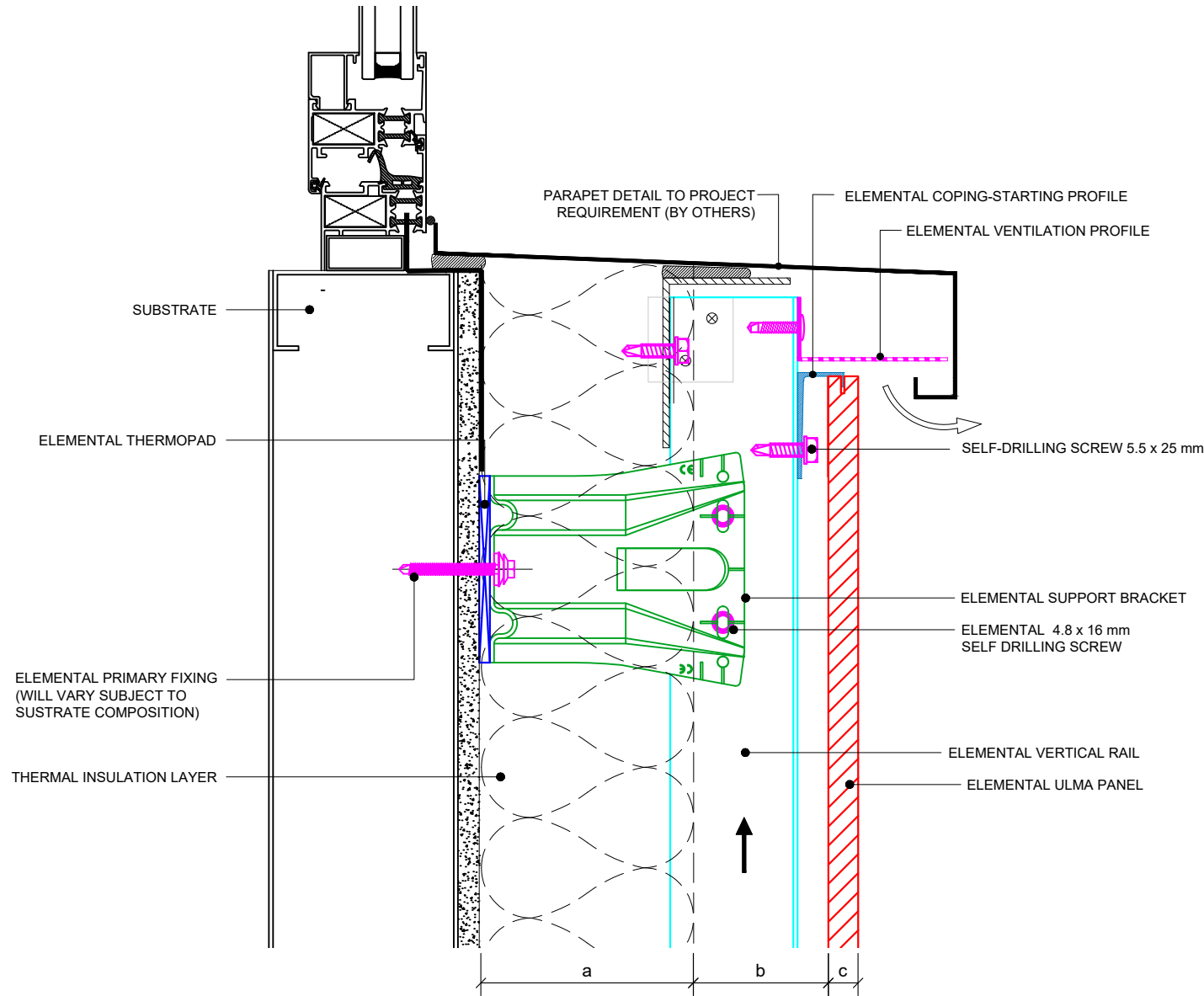
Drawn:

V.C.

Rev.

01

These drawings are indicative only, for use as a guide. The customer is always responsible for any specific design, structural calculations and calculating exact sizes & quantities of panels. Any project details and calculations supplied by Elemental Architectural Cladding Specialists are provided in good faith and should always be checked and approved by the project engineer responsible. Elemental Architectural Cladding Specialists will not accept any liability should the system be designed / installed incorrectly.



Dimensions	
a	Insulation thickness (varies)
b	Free vertical ventilation gap
c	Panel nominal thickness
a+b	Clad Zone



Elemental Architectural Cladding Specialists
 #29 The Cubes Offices, Beacon South Quarter,
 Sandyford
 Dublin 18, D18 A264
 Phone: +353 (0)1 293 8951
 Email: info@elemental.ie

Drawing Title

**ELEMENTAL ULMA - MSF - HORIZONTAL SYSTEM
 WINDOW CILL DETAIL**

Drawing No.

EL-SB-MHU11

System:

**EL-MSF
 HZ-ULMA**

Size:

A4

Scale:

NTS

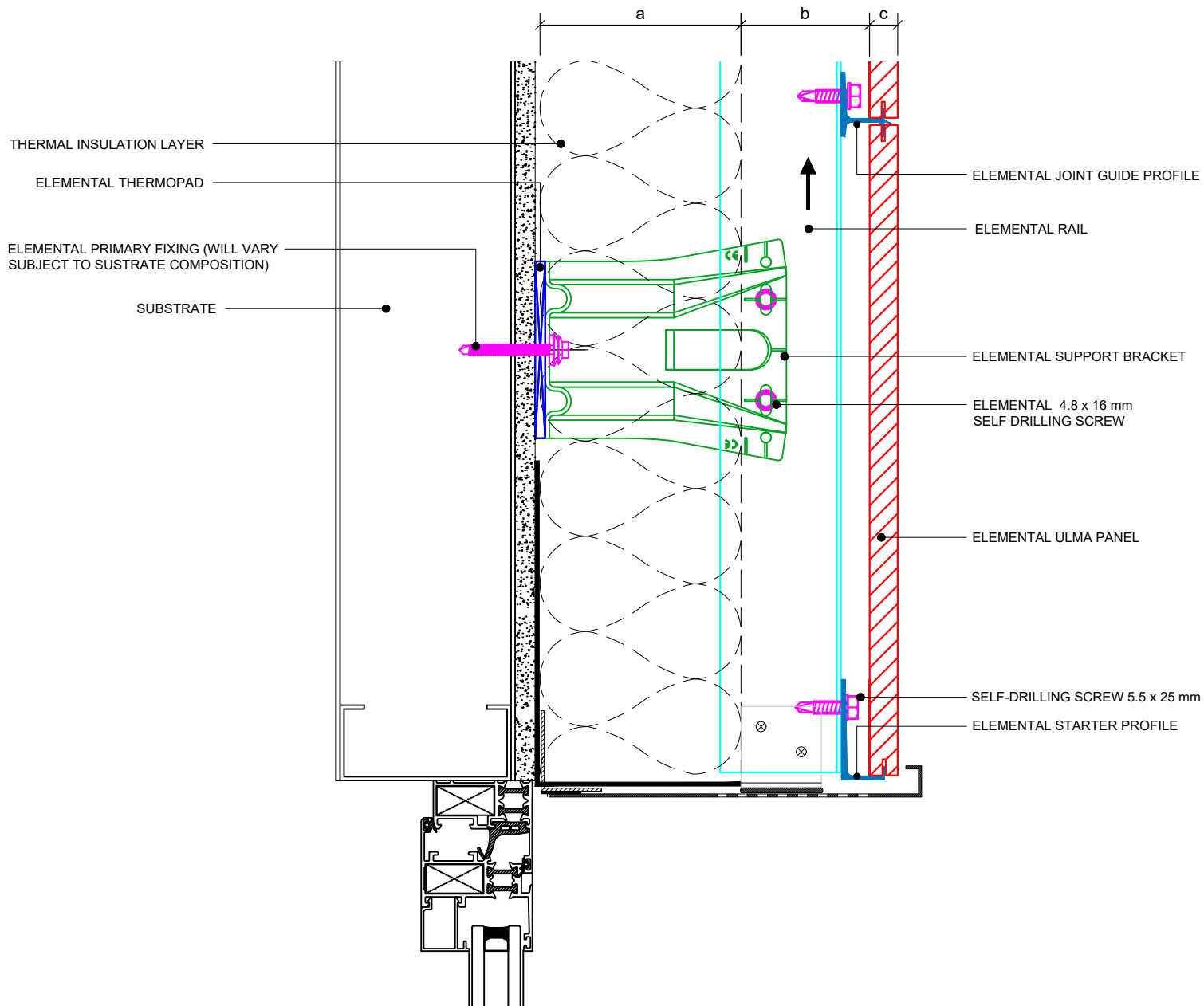
Drawn:

V.C.

Rev.

01

These drawings are indicative only, for use as a guide. The customer is always responsible for any specific design, structural calculations and calculating exact sizes & quantities of panels. Any project details and calculations supplied by Elemental Architectural Cladding Specialists are provided in good faith and should always be checked and approved by the project engineer responsible. Elemental Architectural Cladding Specialists will not accept any liability should the system be designed / installed incorrectly.



Dimensions	
a	Insulation thickness (varies)
b	Free vertical ventilation gap
c	Panel nominal thickness
a+b	Clad Zone



Elemental Architectural Cladding Specialists
 #29 The Cubes Offices, Beacon South Quarter,
 Sandyford
 Dublin 18, D18 A264
 Phone: +353 (0)1 293 8951
 Email: info@elemental.ie

Drawing Title

**ELEMENTAL ULMA - MSF - HORIZONTAL SYSTEM
 WINDOW HEAD DETAIL**

Drawing No.

EL-SB-MHU12

System:

**EL-MSF
 HZ-ULMA**

Size:

A4

Scale:

NTS

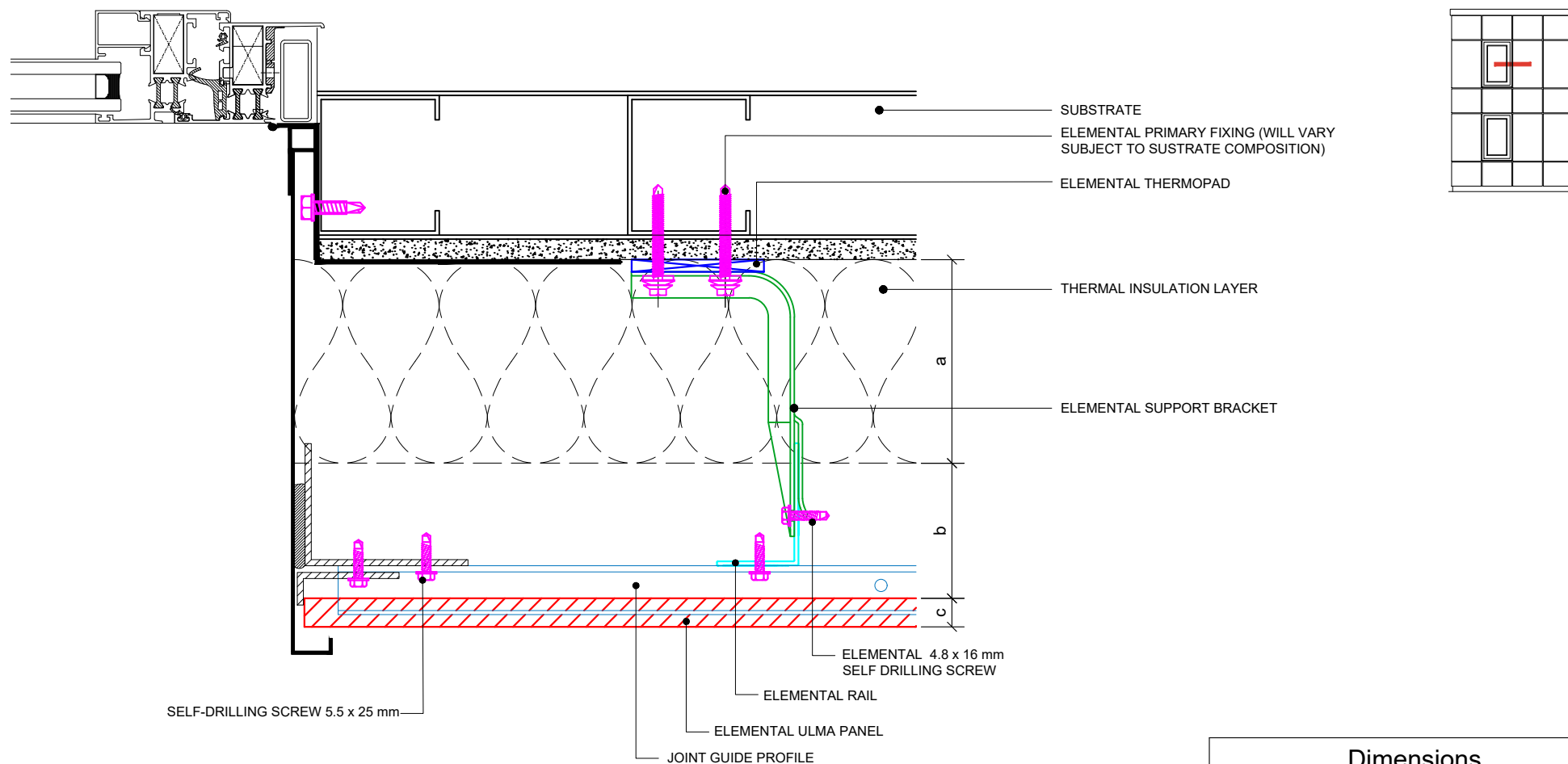
Drawn:

V.C.

Rev.

01

These drawings are indicative only, for use as a guide. The customer is always responsible for any specific design, structural calculations and calculating exact sizes & quantities of panels. Any project details and calculations supplied by Elemental Architectural Cladding Specialists are provided in good faith and should always be checked and approved by the project engineer responsible. Elemental Architectural Cladding Specialists will not accept any liability should the system be designed / installed incorrectly.



Dimensions	
a	Insulation thickness (varies)
b	Free vertical ventilation gap
c	Panel nominal thickness
a+b	Clad Zone



Elemental Architectural Cladding Specialists
 #29 The Cubes Offices, Beacon South Quarter,
 Sandyford
 Dublin 18, D18 A264
 Phone: +353 (0)1 293 8951
 Email: info@elemental.ie

Drawing Title

**ELEMENTAL ULMA - MSF- HORIZONTAL SYSTEM
 WINDOW JAMB DETAIL**

Drawing No.

EL-SB-MHU13

System:

**EL-MSF
 HZ-ULMA**

Size:

A4

Scale:

NTS

Drawn:

V.C.

Rev.

01