

Facade System

Ventilated facade

EL-SB-MP

Elemental-SFS Bracket-MSF Petrarch

Petrarch, Reconstituted Stone

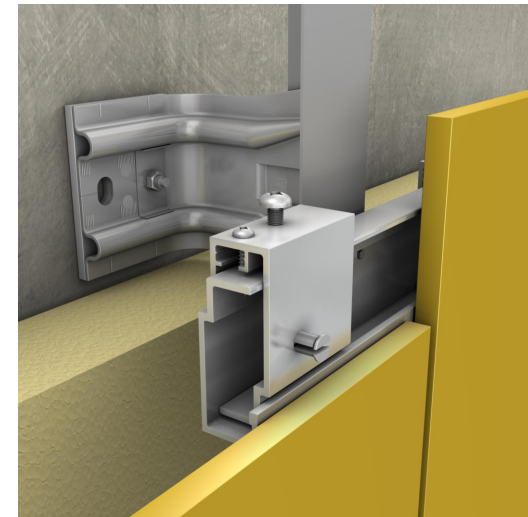
10 mm Petrarch thickness

Mechanical Secret Fix onto 2-layers

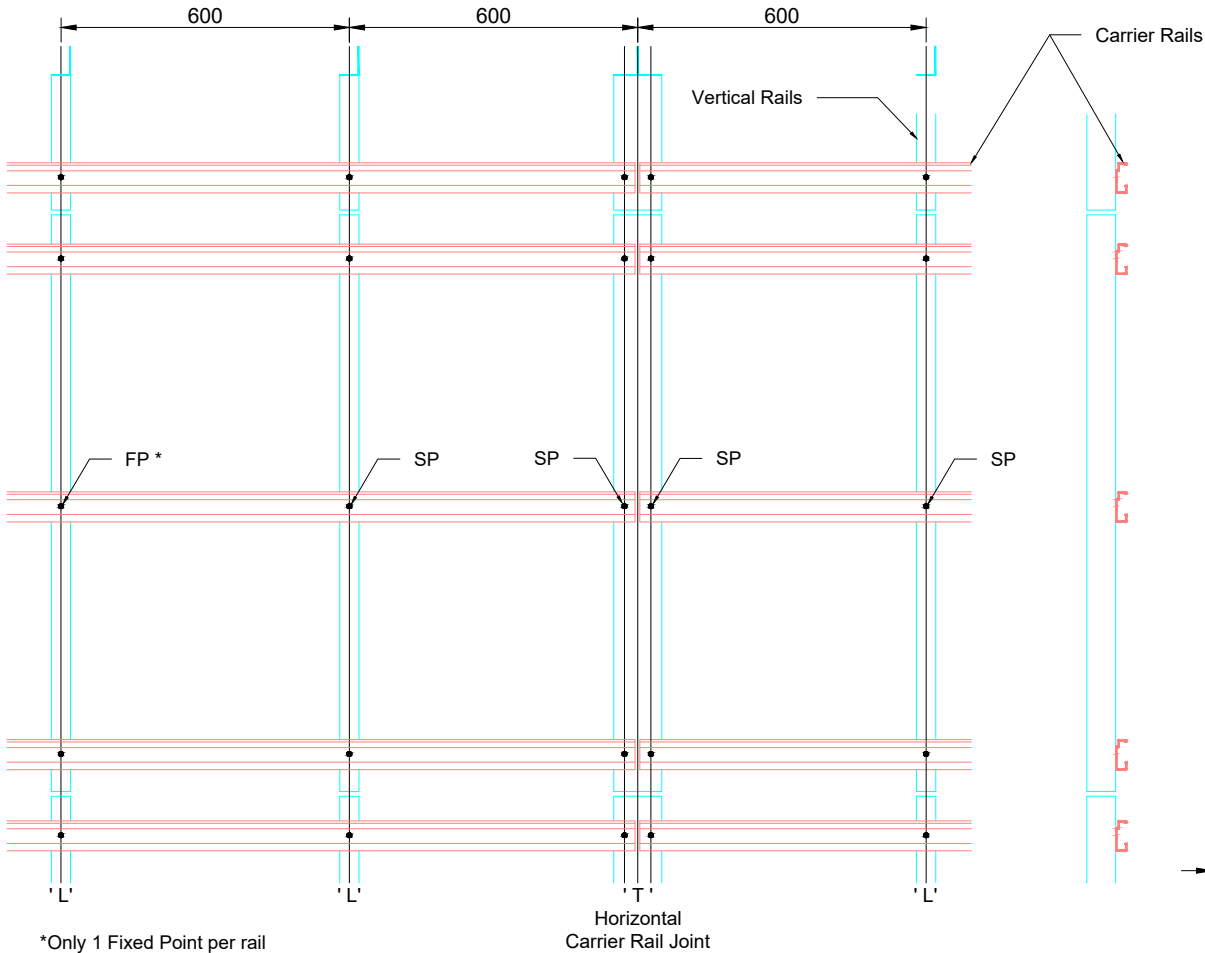
Metal substructure

Contents:

EL-SB-MP01	SYSTEM LAYOUT
EL-SB-MP02	BRACKET TYPES AVAILABLE
EL-SB-MP03	BASE DETAIL
EL-SB-MP04	HORIZONTAL PANEL JOINT DETAIL
EL-SB-MP05	RAIL SUPPORT AND HORIZONTAL PANEL JOINT
EL-SB-MP06	VERTICAL PANEL JOINT DETAIL
EL-SB-MP07	RAIL SUPPORT AND VERTICAL PANEL JOINT
EL-SB-MP08	PANEL JOINT - MARTLET JOINT OPTION
EL-SB-MP09	RAIL SUPPORT AND JOINT DETAIL
EL-SB-MP10	EXTERNAL CORNER DETAIL
EL-SB-MP11	EXTERNAL CORNER- OPEN JOINT OPTION
EL-SB-MP12	INTERNAL CORNER - OPEN JOINT OPTION
EL-SB-MP13	GENERIC PARAPET DETAIL
EL-SB-MP14	WINDOW CILL DETAIL
EL-SB-MP15	WINDOW HEAD DETAIL
EL-SB-MP16	WINDOW JAMB REVEAL DETAIL
EL-SB-MP17	PANEL HANGERS
EL-SB-MP18	SITE ASSEMBLED & MSF CORNER GUIDELINES



Rail Centres

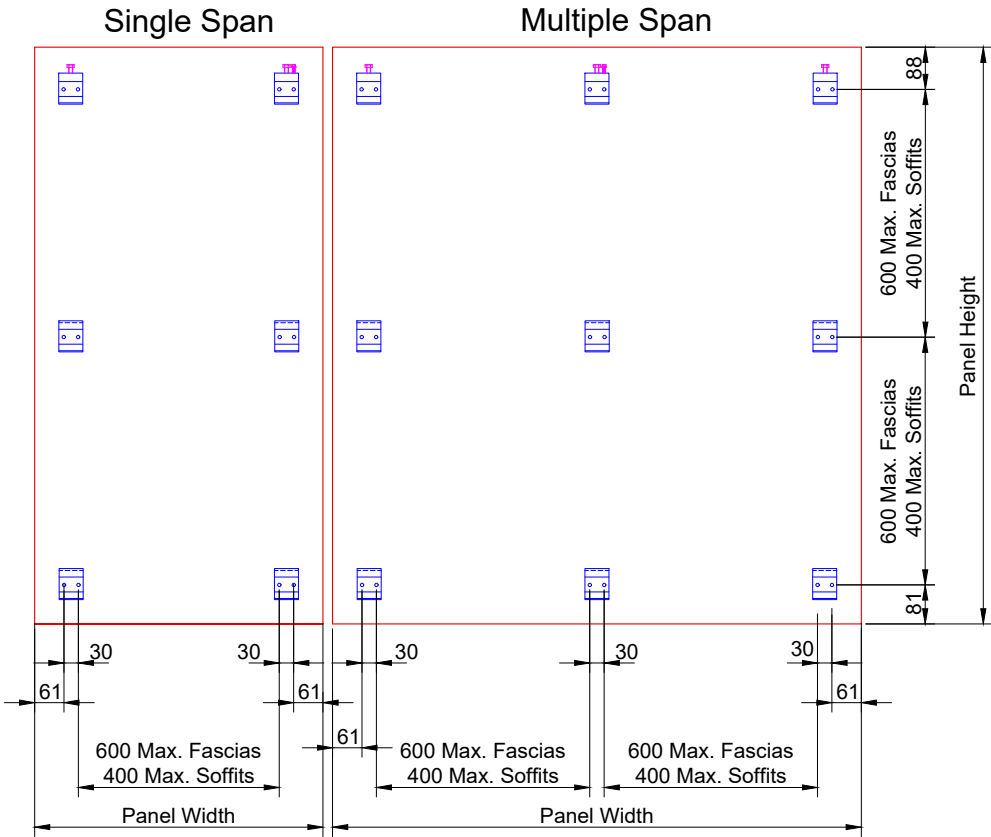


The fixing procedure for the horizontal carrier rail in max. 3m lengths is as follows:


- fixing HCR to L rail - fixed point (FP)
- fixing HCR ends to T rail - sliding point (SP) - HCR **only** drill holes 10mm

Fixing guidelines

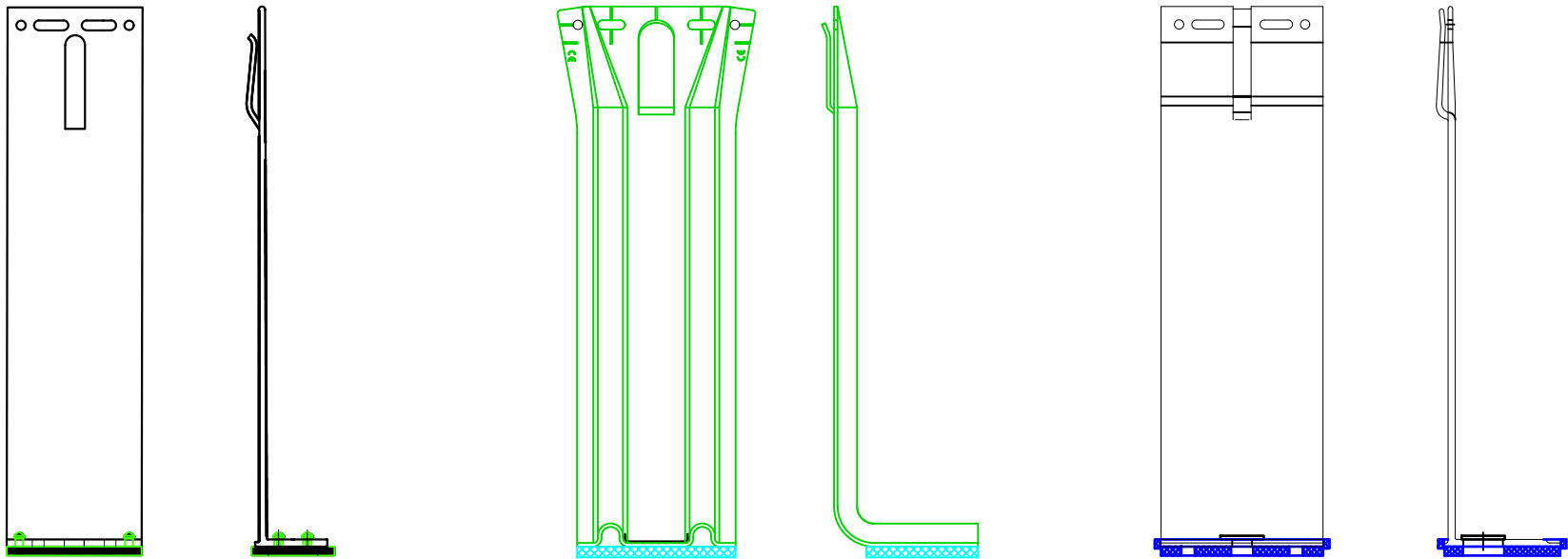
- Fixed Adjustable Hanger
- Adjustable Hanger
- Standard Hanger



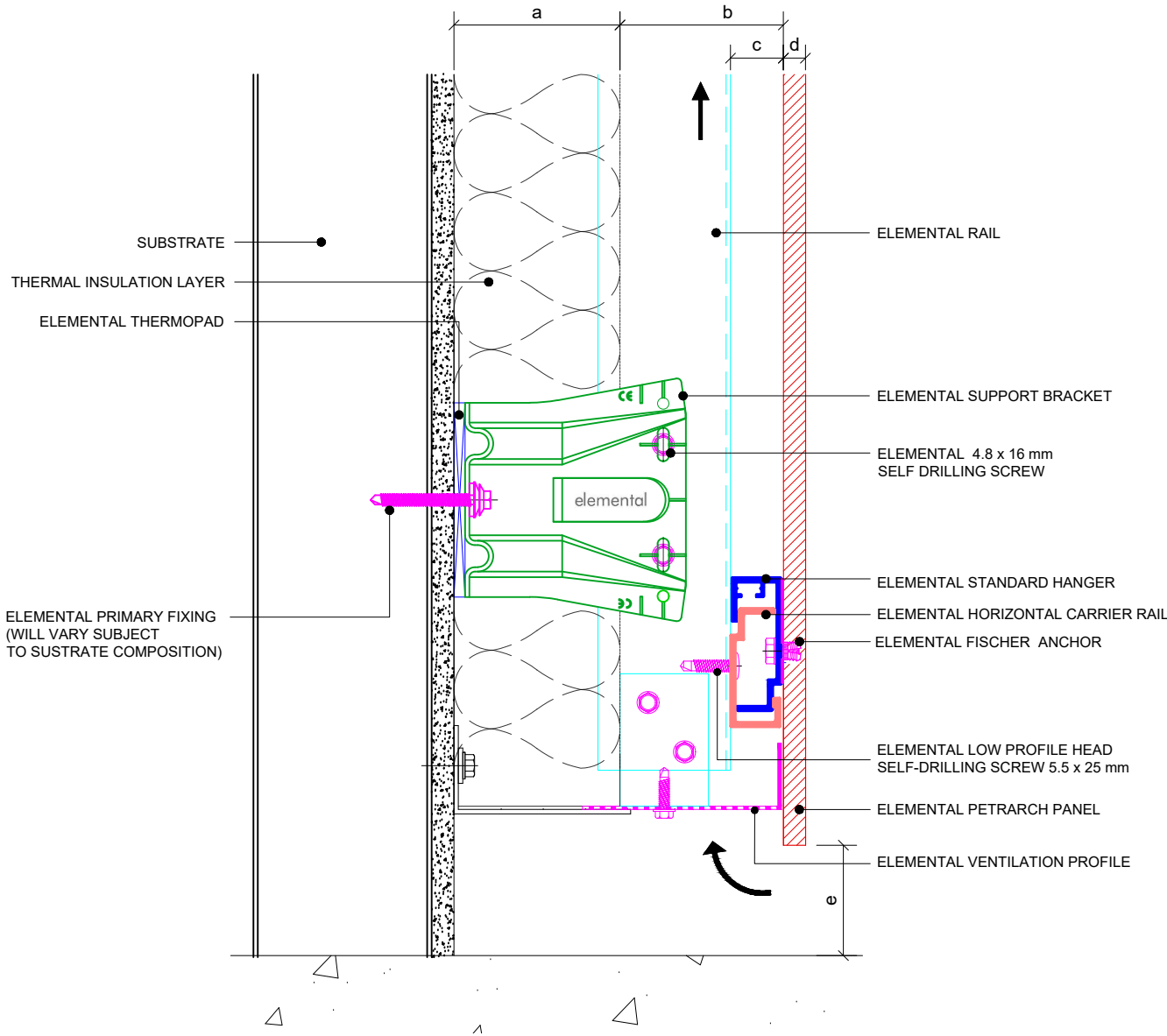
Panels Viewed from Rear

	Elemental Architectural Cladding Specialists #29 The Cubes Offices, Beacon South Quarter, Sandyford Dublin 18, D18 A264 Phone: +353 (0)1 293 8951 Email: info@elemental.ie				Drawing Title									
					ELEMENTAL PETRARCH - MSF SYSTEM LAYOUT									
Drawing No.		EL-SB-MP01		System:	EL-MSF Petrarch	Size:	A4	Scale:	NTS	Drawn:	V.C.	Rev.	01	

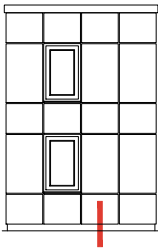
BRACKET TYPES AVAILABLE FROM ELEMENTAL



These drawings are indicative only, for use as a guide. The customer is always responsible for any specific design, structural calculations and calculating exact sizes & quantities of panels. Any project details and calculations supplied by Elemental Architectural Cladding Specialists are provided in good faith and should always be checked and approved by the project engineer responsible. Elemental Architectural Cladding Specialists will not accept any liability should the system be designed / installed incorrectly.

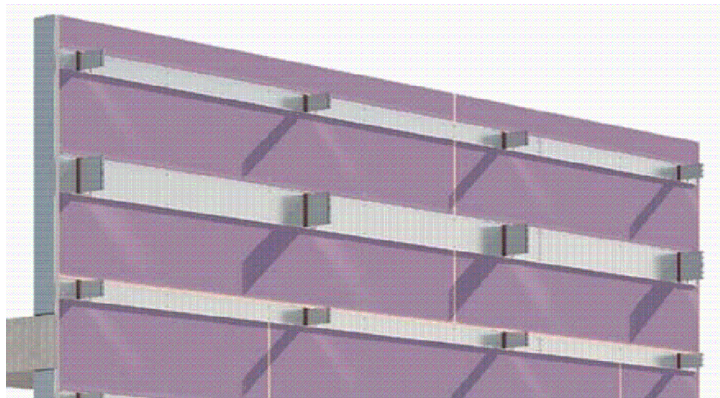
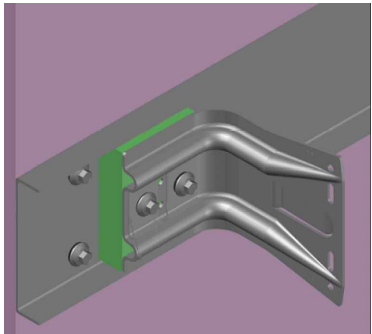


Dimensions	
a	Insulation thickness (varies)
b	Free vertical ventilation gap
c	Horizontal Carrier rail and Panel Hanger
d	Panel nominal thickness
e	Distance min. 50mm
a+b	Clad Zone



Note:

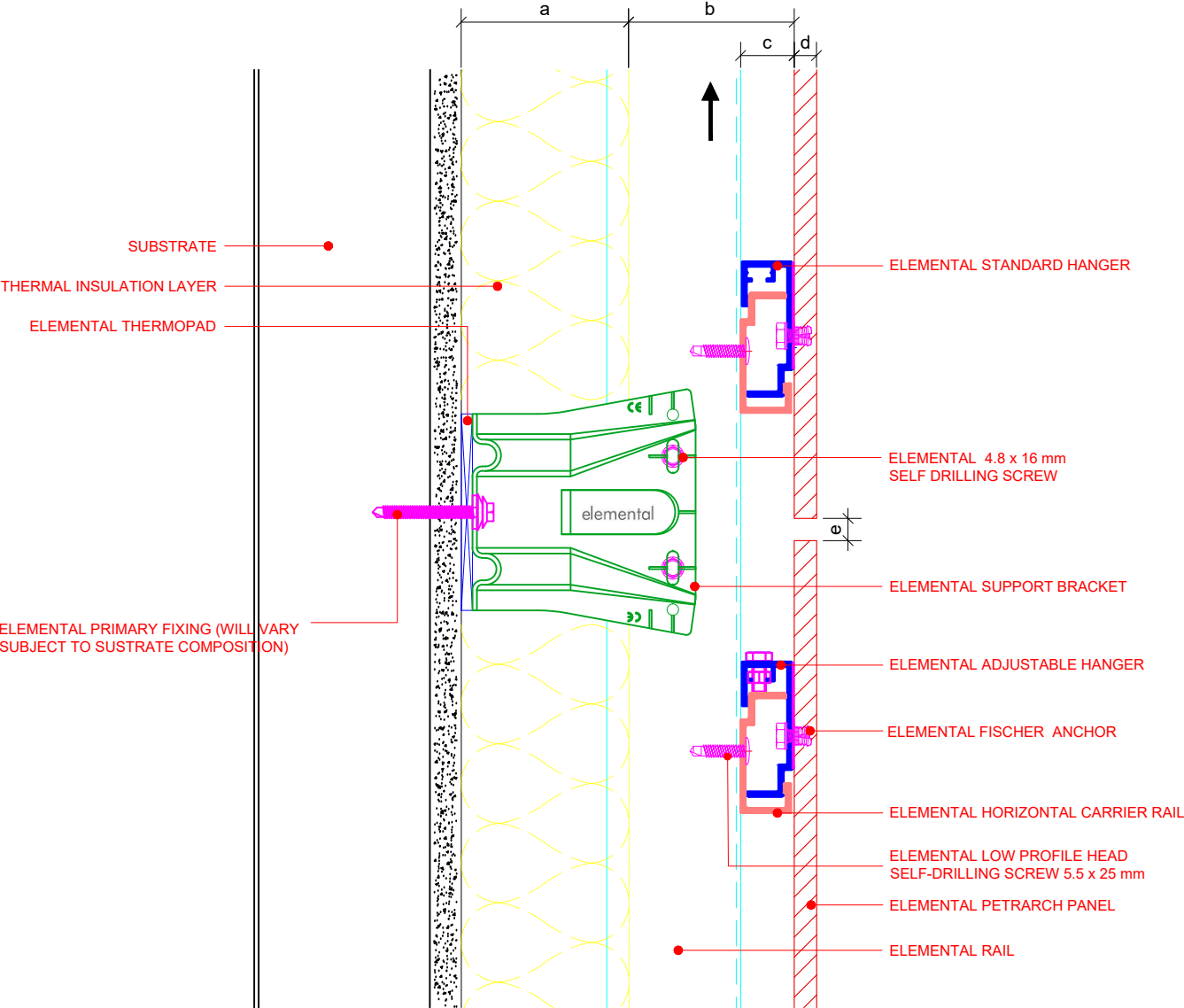
“In the event that the subframe brackets do not line up with the vertical steel studs a horizontal galvanised stud maybe required”



Elemental Architectural Cladding Specialists
#29 The Cubes Offices, Beacon South Quarter,
Sandyford
Dublin 18, D18 A264
Phone: +353 (0)1 293 8951
Email: info@elemental.ie

Drawing Title		ELEMENTAL PETRARCH - MSF BASE DETAIL									
Drawing No.	EL-SB-MP03	System:	EL-MSF Petrarch	Size:	A4	Scale:	NTS	Drawn:	V.C.	Rev.	01

These drawings are indicative only, for use as a guide. The customer is always responsible for any specific design, structural calculations and calculating exact sizes & quantities of panels. Any project details and calculations supplied by Elemental Architectural Cladding Specialists are provided in good faith and should always be checked and approved by the project engineer responsible. Elemental Architectural Cladding Specialists will not accept any liability should the system be designed / installed incorrectly.



Dimensions	
a	Insulation thickness (varies)
b	Free vertical ventilation gap
c	Horizontal Carrier rail and Panel Hanger
d	Panel nominal thickness
e	Panel joint - min 10mm
a+b	Clad Zone



Elemental Architectural Cladding Specialists
#29 The Cubes Offices, Beacon South Quarter,
Sandyford
Dublin 18, D18 A264
Phone: +353 (0)1 293 8951
Email: info@elemental.ie

Drawing Title

**ELEMENTAL PETRARCH - MSF
HORIZONTAL PANEL JOINT DETAIL**

Drawing No.

EL-SB-MP04

System:

**EL-MSF
Petrarch**

Size:

A4

Scale:

NTS

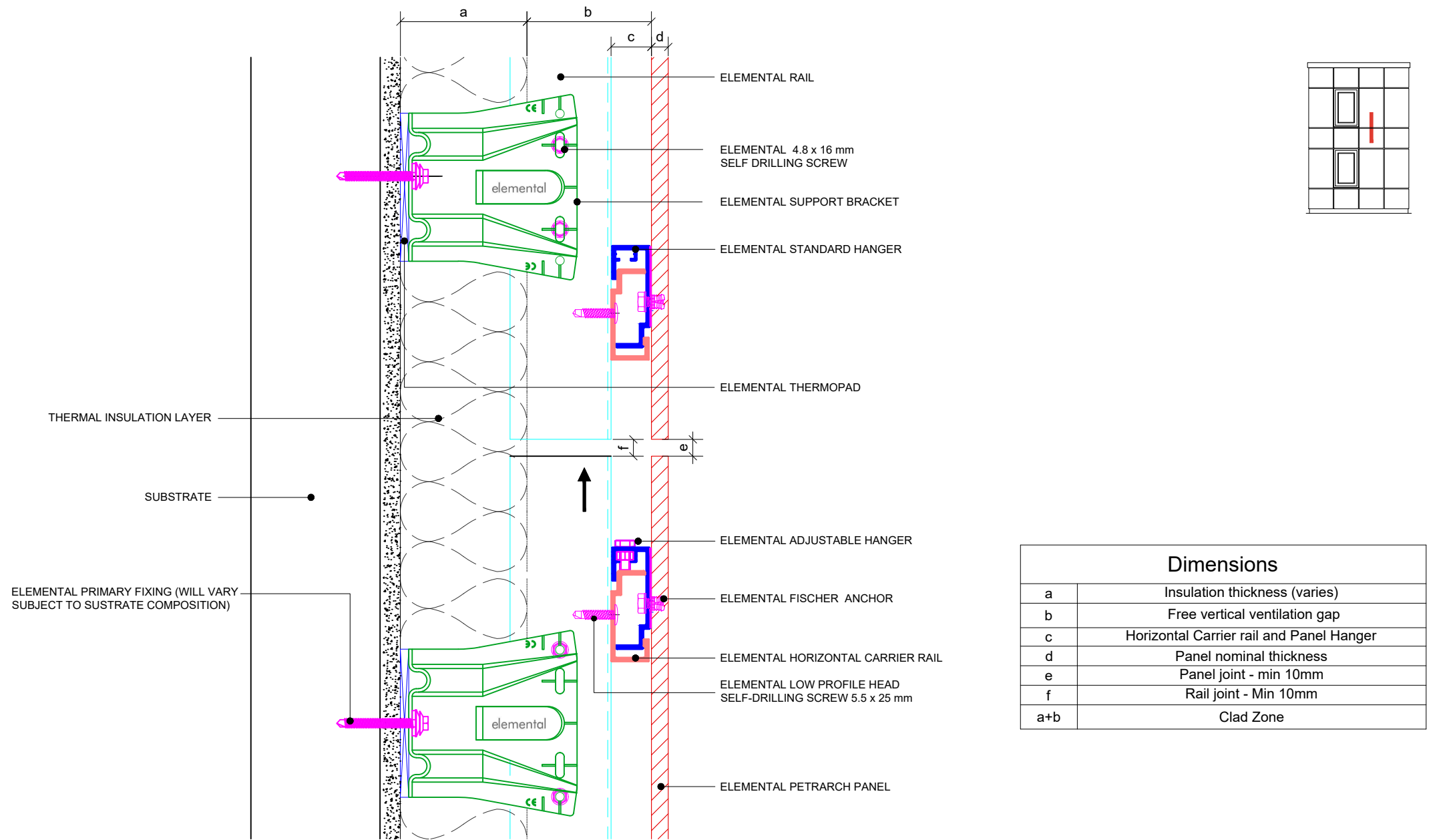
Drawn:

V.C.

Rev.

01

These drawings are indicative only, for use as a guide. The customer is always responsible for any specific design, structural calculations and calculating exact sizes & quantities of panels. Any project details and calculations supplied by Elemental Architectural Cladding Specialists are provided in good faith and should always be checked and approved by the project engineer responsible. Elemental Architectural Cladding Specialists will not accept any liability should the system be designed / installed incorrectly.



Dimensions

a	Insulation thickness (varies)
b	Free vertical ventilation gap
c	Horizontal Carrier rail and Panel Hanger
d	Panel nominal thickness
e	Panel joint - min 10mm
f	Rail joint - Min 10mm
a+b	Clad Zone



Elemental Architectural Cladding Specialists
#29 The Cubes Offices, Beacon South Quarter,
Sandyford
Dublin 18, D18 A264
Phone: +353 (0)1 293 8951
Email: info@elemental.ie

Drawing Title

ELEMENTAL PETRARCH - MSF
RAIL SUPPORT AND PANEL HORIZONTAL JOINT DETAIL

Drawing No.

EL-SB-MP05

System:

EL-MSF
Petrarch

Size:

A4

Scale:

NTS

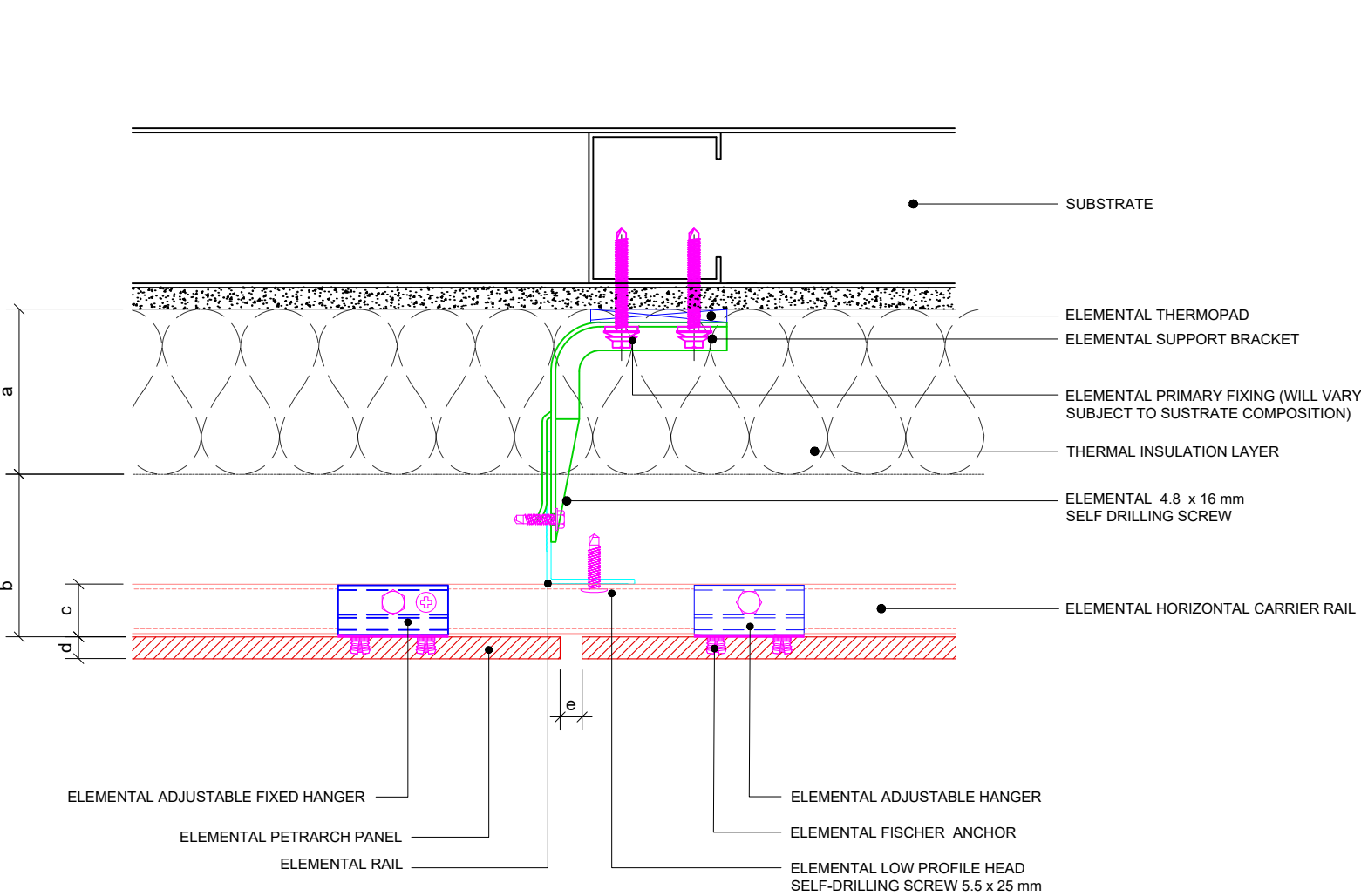
Drawn:

V.C.

Rev.

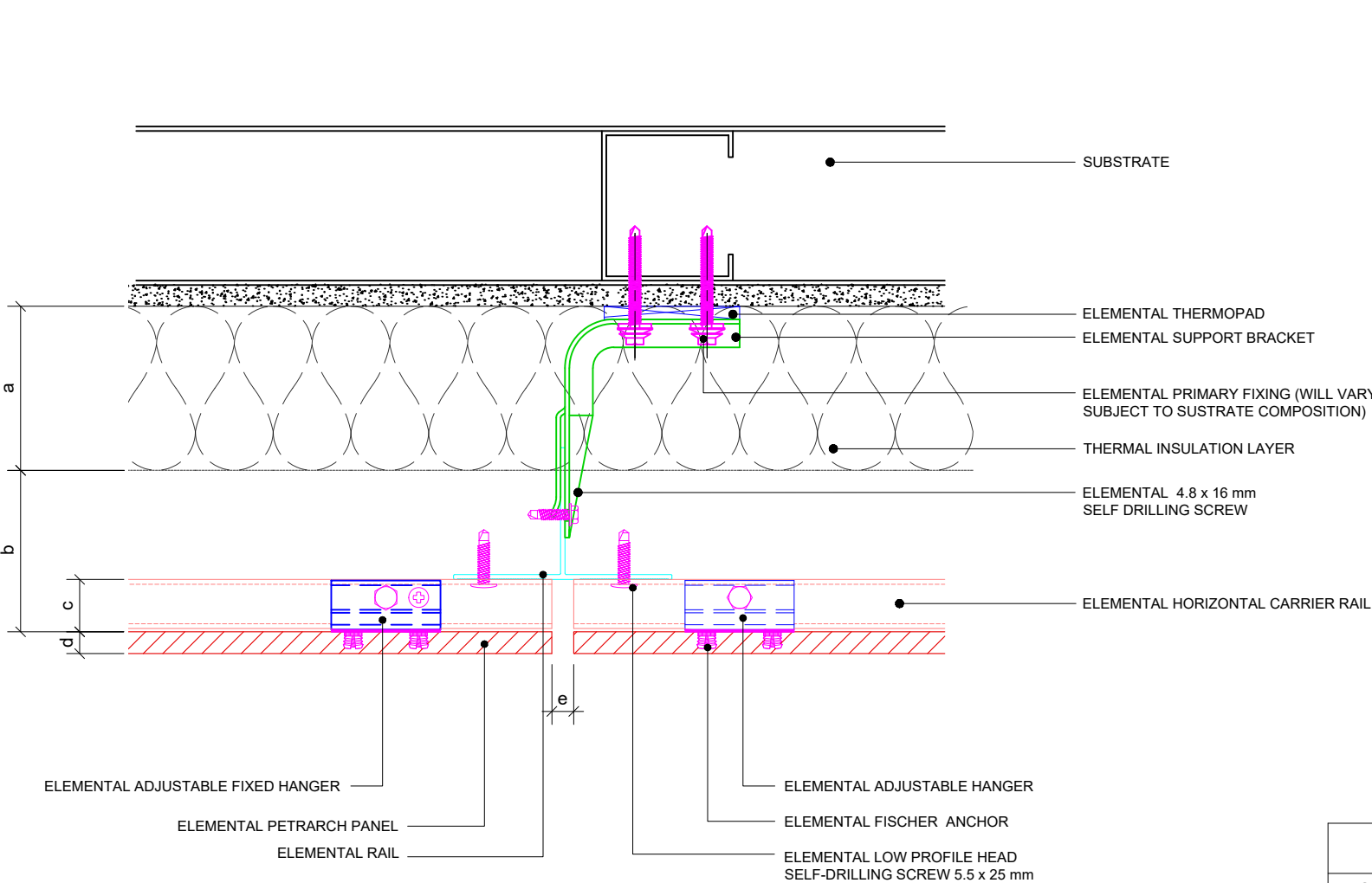
01

These drawings are indicative only, for use as a guide. The customer is always responsible for any specific design, structural calculations and calculating exact sizes & quantities of panels. Any project details and calculations supplied by Elemental Architectural Cladding Specialists are provided in good faith and should always be checked and approved by the project engineer responsible. Elemental Architectural Cladding Specialists will not accept any liability should the system be designed / installed incorrectly.



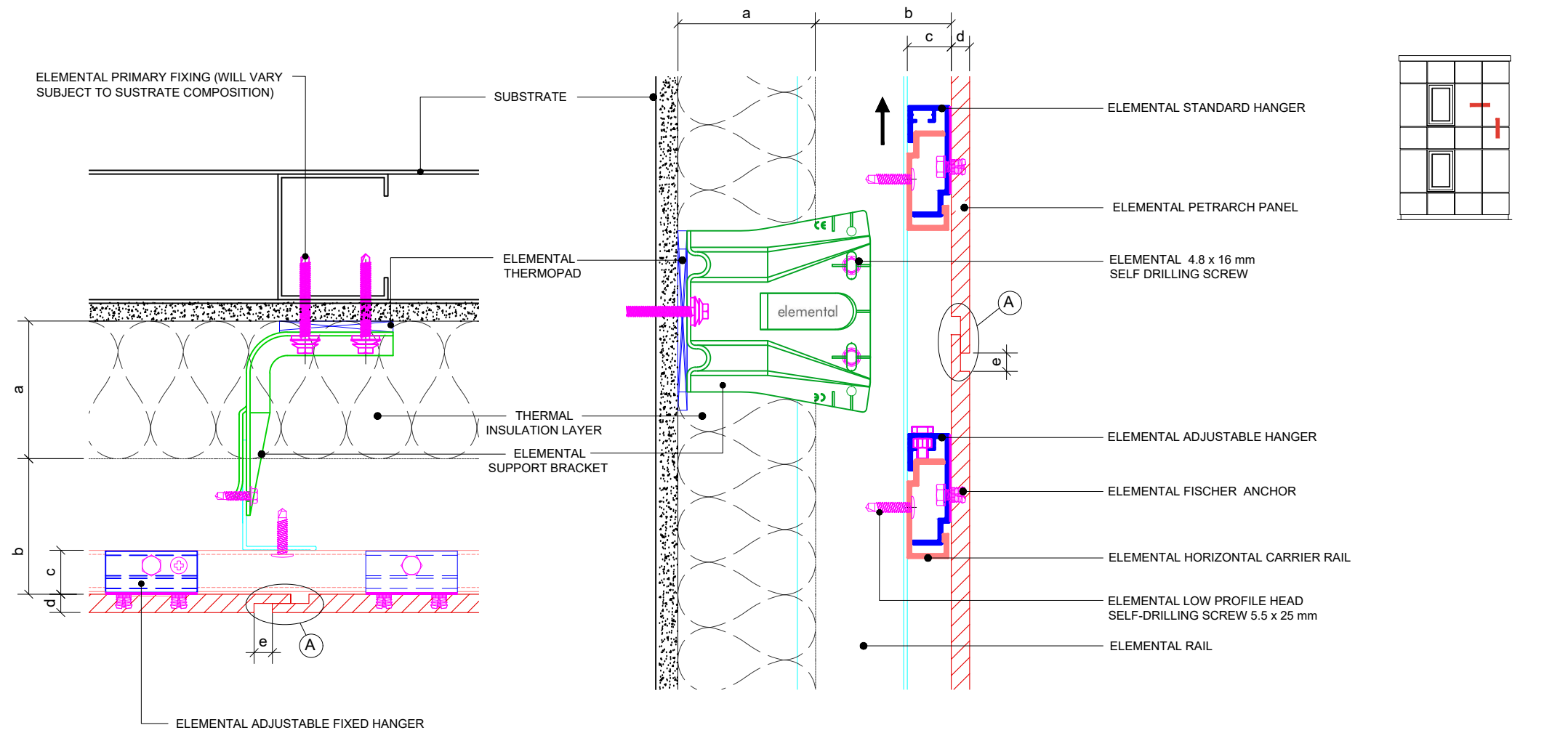
Dimensions	
a	Insulation thickness (varies)
b	Free vertical ventilation gap
c	Horizontal Carrier rail and Panel Hanger
d	Panel nominal thickness
e	Panel joint - min 10mm
a+b	Clad Zone

These drawings are indicative only, for use as a guide. The customer is always responsible for any specific design, structural calculations and calculating exact sizes & quantities of panels. Any project details and calculations supplied by Elemental Architectural Cladding Specialists are provided in good faith and should always be checked and approved by the project engineer responsible. Elemental Architectural Cladding Specialists will not accept any liability should the system be designed / installed incorrectly.

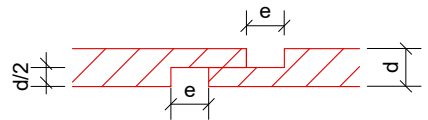


Dimensions	
a	Insulation thickness (varies)
b	Free vertical ventilation gap
c	Horizontal Carrier rail and Panel Hanger
d	Panel nominal thickness
e	Panel joint - min 10mm
a+b	Clad Zone

These drawings are indicative only, for use as a guide. The customer is always responsible for any specific design, structural calculations and calculating exact sizes & quantities of panels. Any project details and calculations supplied by Elemental Architectural Cladding Specialists are provided in good faith and should always be checked and approved by the project engineer responsible. Elemental Architectural Cladding Specialists will not accept any liability should the system be designed / installed incorrectly.



(A) MARTLET DETAIL*

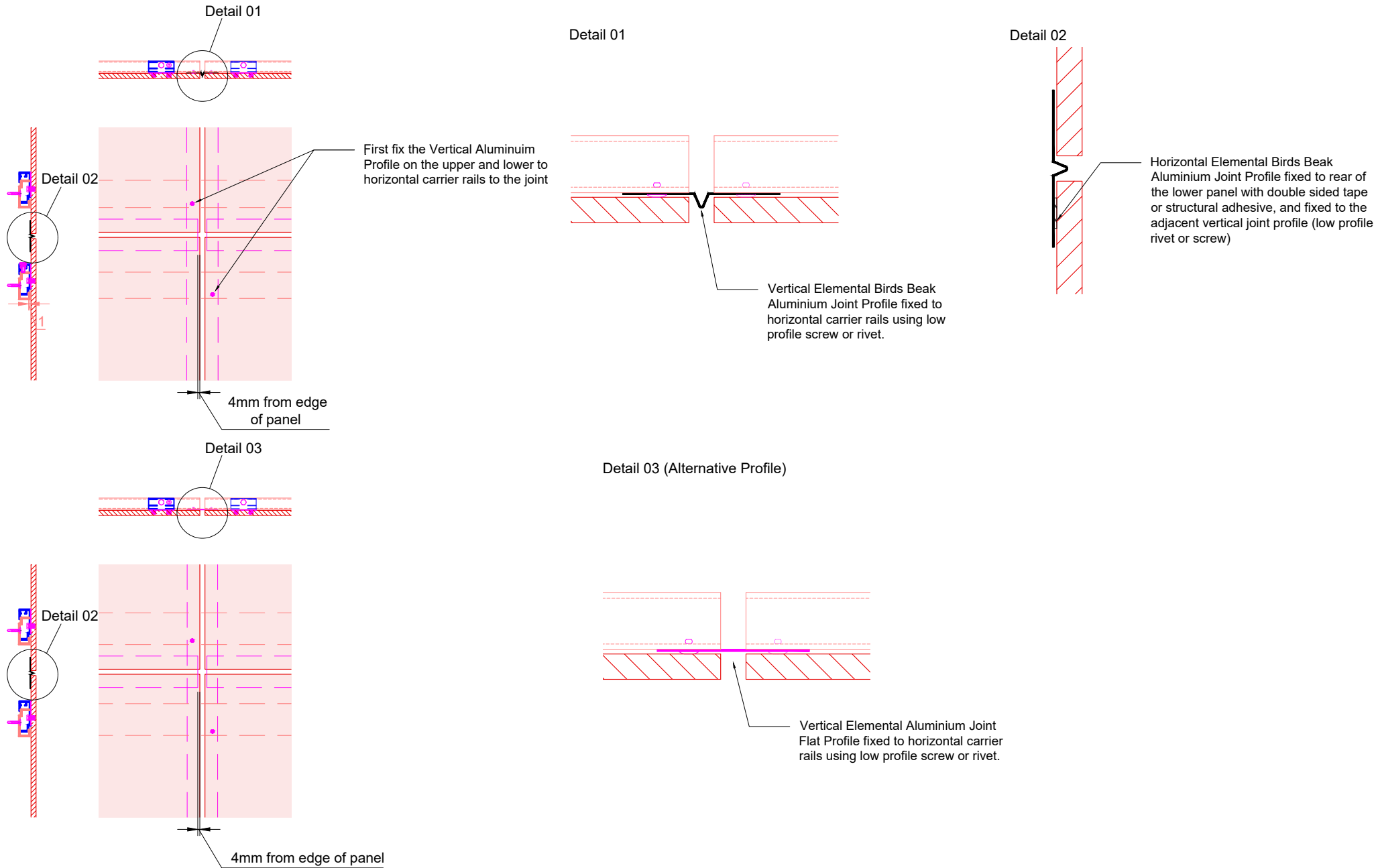


*Only available vertical or horizontal on each panel, NOT both.

Dimensions	
a	Insulation thickness (varies)
b	Free vertical ventilation gap
c	Horizontal Carrier rail and Panel Hanger
d	Panel nominal thickness
e	Panel joint - min 10mm
a+b	Clad Zone

Elemental Architectural Cladding Specialists reserve the right to amend details at any time without prior notice. Reproduction or disclosure to third parties is strictly prohibited and can only be attained through signed, written consent from Elemental ACS.

These drawings are indicative only, for use as a guide. The customer is always responsible for any specific design, structural calculations and calculating exact sizes & quantities of panels. Any project details and calculations supplied by Elemental Architectural Cladding Specialists are provided in good faith and should always be checked and approved by the project engineer responsible. Elemental Architectural Cladding Specialists will not accept any liability should the system be designed / installed incorrectly.



Elemental Architectural Cladding Specialists
#29 The Cubes Offices, Beacon South Quarter,
Sandyford
Dublin 18, D18 A264
Phone: +353 (0)1 293 8951
Email: info@elemental.ie

Drawing Title

**ELEMENTAL PETRARCH - MSF
RAIL SUPPORT AND JOINT DETAIL**

Drawing No.

EL-SB-MP09

System:

**EL-MSF
Petrarch**

Size:

A4

Scale:

NTS

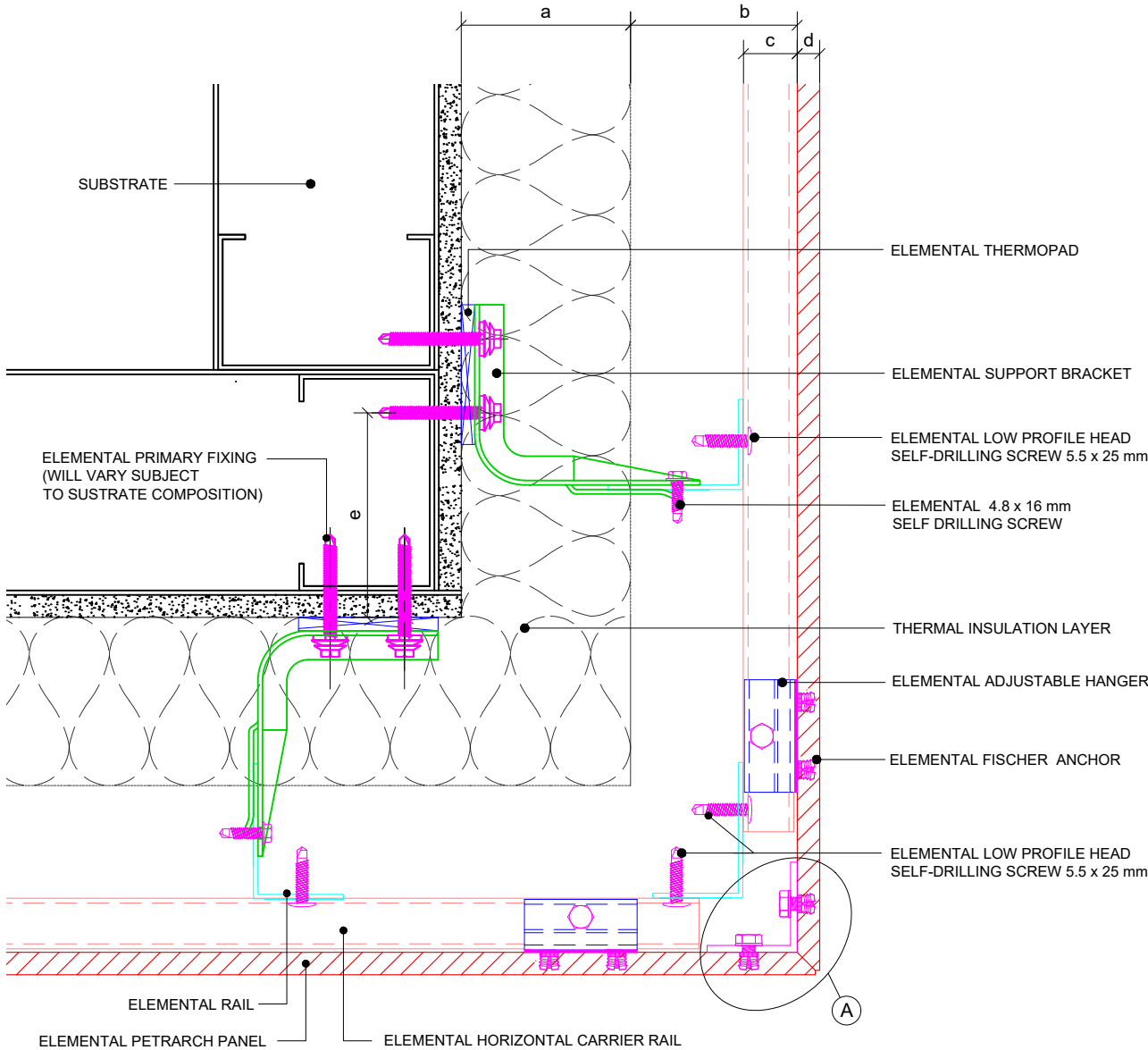
Drawn:

V.C.

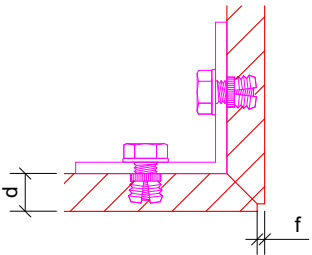
Rev.

01

These drawings are indicative only, for use as a guide. The customer is always responsible for any specific design, structural calculations and calculating exact sizes & quantities of panels. Any project details and calculations supplied by Elemental Architectural Cladding Specialists are provided in good faith and should always be checked and approved by the project engineer responsible. Elemental Architectural Cladding Specialists will not accept any liability should the system be designed / installed incorrectly.

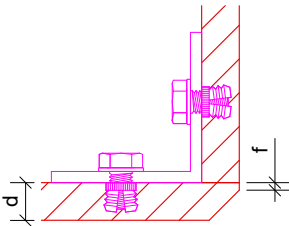


(A) MSF CORNER DETAIL*



* Please refer to Elemental technical guide for panel size limitations.

MSF Chamfered corner option*



* Please refer to Elemental technical guide for panel size limitations.

Dimensions

a	Insulation thickness (varies)
b	Free vertical ventilation gap
c	Horizontal Carrier rail and Panel Hanger
d	Panel nominal thickness
e	Min. recommended 100mm
f	2mm Birds Beak Mitre
a+b	Clad Zone



Elemental Architectural Cladding Specialists
#29 The Cubes Offices, Beacon South Quarter,
Sandyford
Dublin 18, D18 A264
Phone: +353 (0)1 293 8951
Email: info@elemental.ie

Drawing Title

**ELEMENTAL PETRARCH - MSF
EXTERNAL CORNER SITE ASSEMBLED MSF MITRED CORNER**

Drawing No.

EL-SB-MP10

System:

**EL-MSF
Petrarch**

Size:

A4

Scale:

NTS

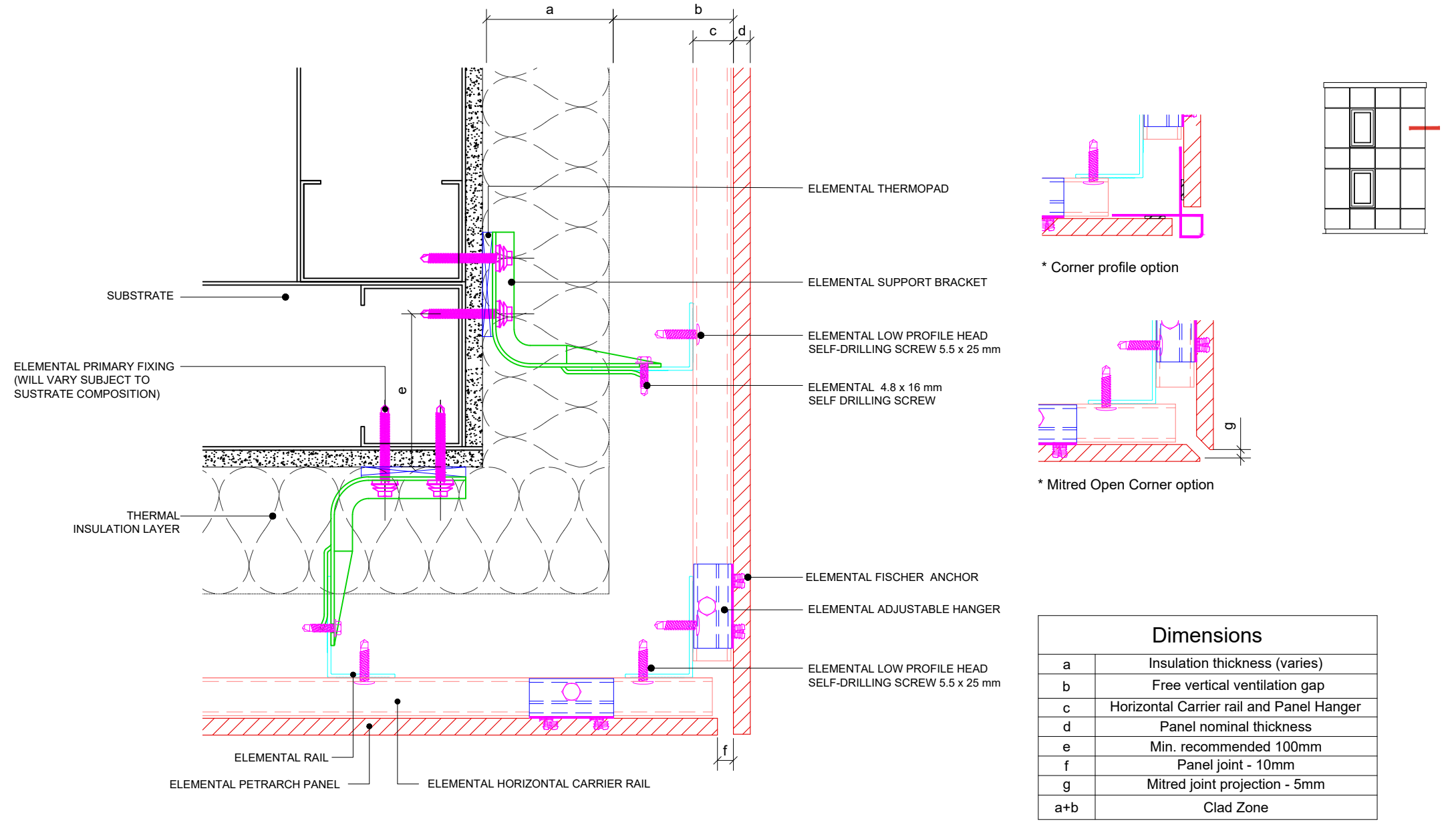
Drawn:

V.C.

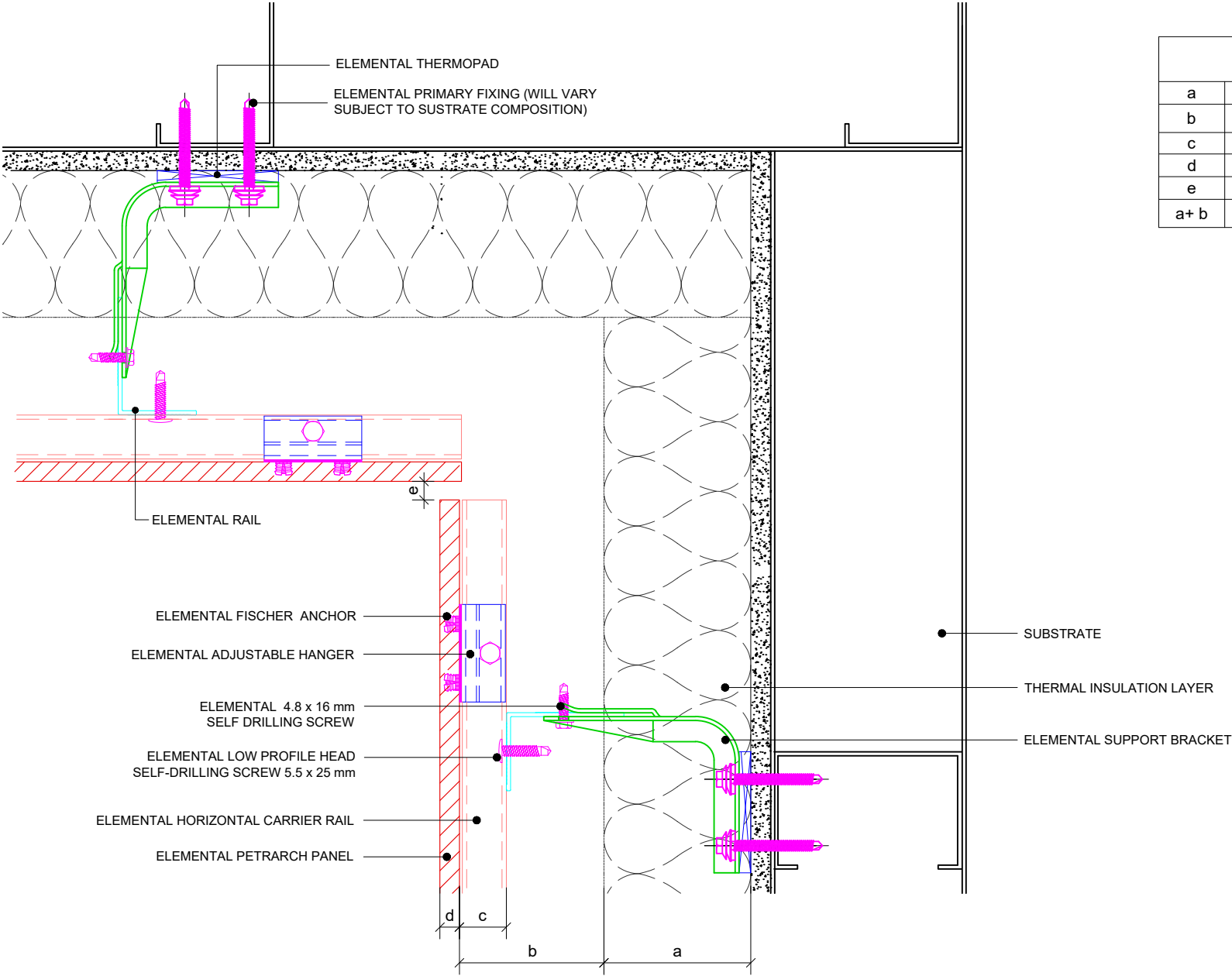
Rev.

01

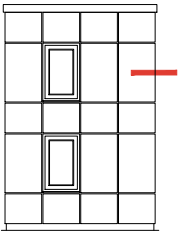
These drawings are indicative only, for use as a guide. The customer is always responsible for any specific design, structural calculations and calculating exact sizes & quantities of panels. Any project details and calculations supplied by Elemental Architectural Cladding Specialists are provided in good faith and should always be checked and approved by the project engineer responsible. Elemental Architectural Cladding Specialists will not accept any liability should the system be designed / installed incorrectly.



These drawings are indicative only, for use as a guide. The customer is always responsible for any specific design, structural calculations and calculating exact sizes & quantities of panels. Any project details and calculations supplied by Elemental Architectural Cladding Specialists are provided in good faith and should always be checked and approved by the project engineer responsible. Elemental Architectural Cladding Specialists will not accept any liability should the system be designed / installed incorrectly.



Dimensions	
a	Insulation thickness (varies)
b	Free vertical ventilation gap
c	Horizontal Carrier rail and Panel Hanger
d	Panel nominal thickness
e	Panel Joint 10mm
a+ b	Clad Zone



Elemental Architectural Cladding Specialists
#29 The Cubes Offices, Beacon South Quarter,
Sandyford
Dublin 18, D18 A264
Phone: +353 (0)1 293 8951
Email: info@elemental.ie

Drawing Title

**ELEMENTAL PETRARCH - MSF
INTERNAL CORNER - OPEN JOINT OPTION**

Drawing No.

EL-SB-MP12

System:

**EL-MSF
Petrarch**

Size:

A4

Scale:

NTS

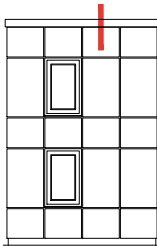
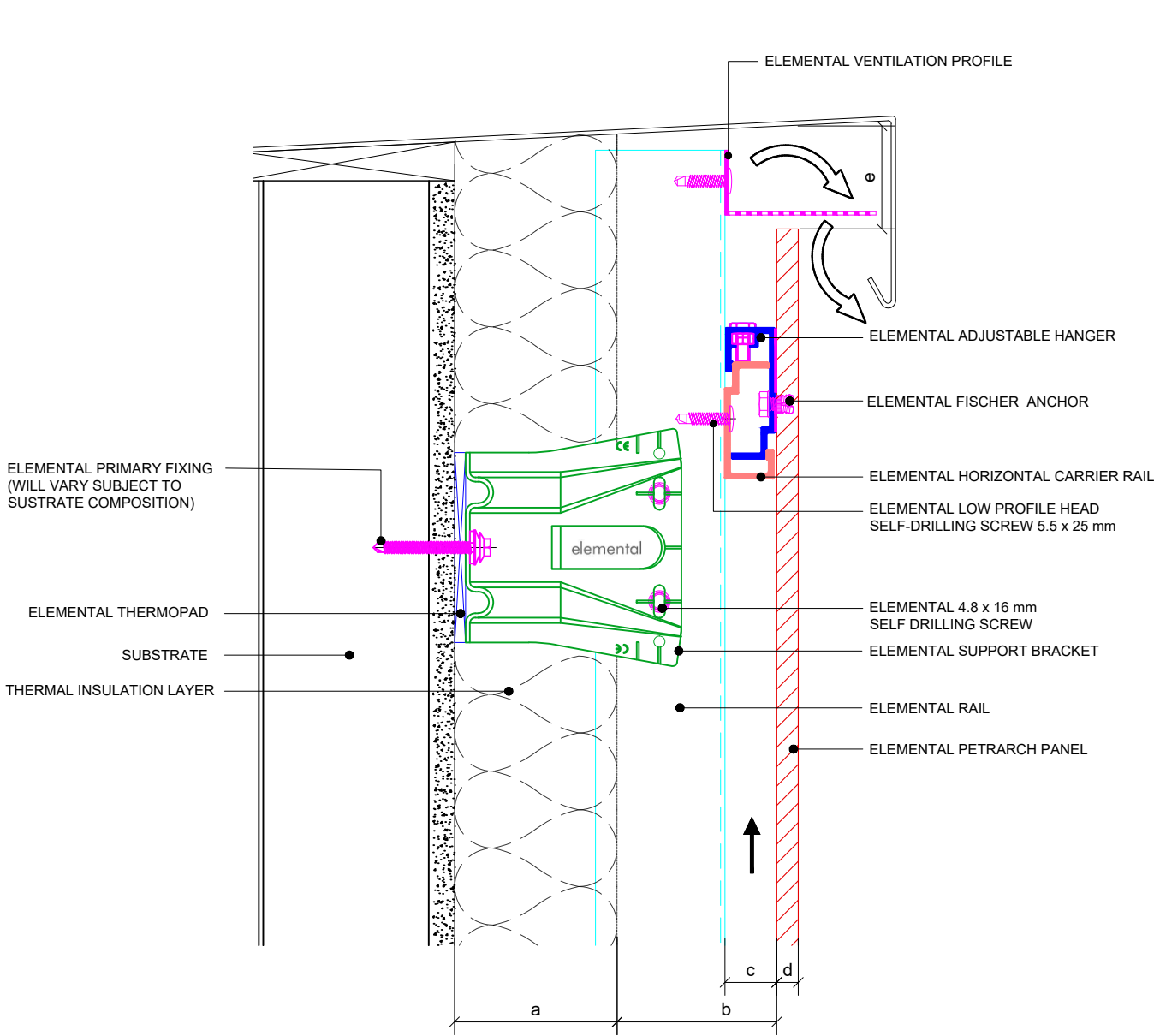
Drawn:

V.C.

Rev.

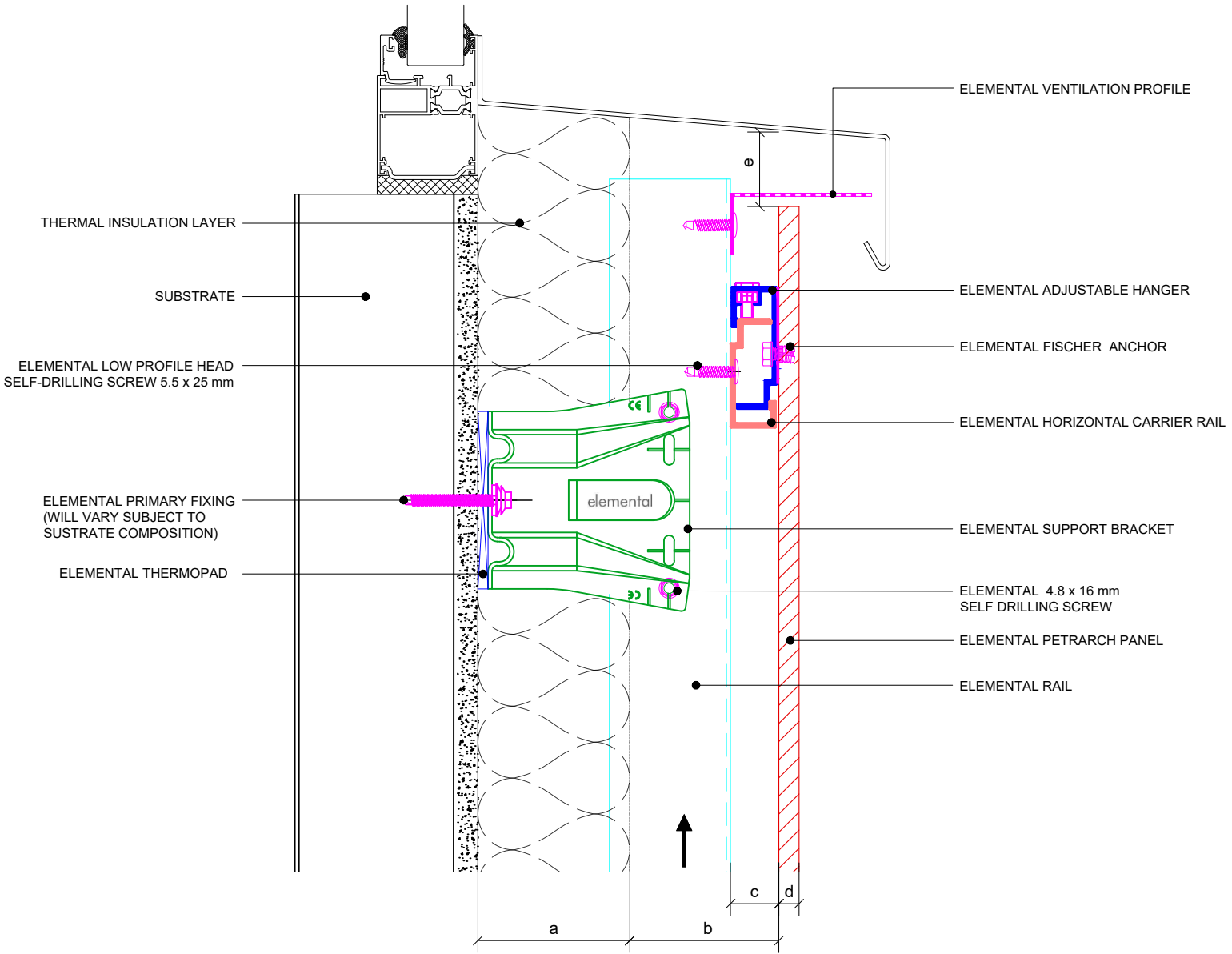
01

These drawings are indicative only, for use as a guide. The customer is always responsible for any specific design, structural calculations and calculating exact sizes & quantities of panels. Any project details and calculations supplied by Elemental Architectural Cladding Specialists are provided in good faith and should always be checked and approved by the project engineer responsible. Elemental Architectural Cladding Specialists will not accept any liability should the system be designed / installed incorrectly.



Dimensions	
a	Insulation thickness (varies)
b	Free vertical ventilation gap
c	Horizontal Carrier rail and Panel Hanger
d	Panel nominal thickness
e	Ventilation - inlet & outlet ventilation gaps
a+b	Clad Zone

These drawings are indicative only, for use as a guide. The customer is always responsible for any specific design, structural calculations and calculating exact sizes & quantities of panels. Any project details and calculations supplied by Elemental Architectural Cladding Specialists are provided in good faith and should always be checked and approved by the project engineer responsible. Elemental Architectural Cladding Specialists will not accept any liability should the system be designed / installed incorrectly.



Dimensions	
a	Insulation thickness (varies)
b	Free vertical ventilation gap
c	Horizontal Carrier rail and Panel Hanger
d	Panel nominal thickness
e	Ventilation - inlet & outlet ventilation gaps
a+b	Clad Zone



Elemental Architectural Cladding Specialists
#29 The Cubes Offices, Beacon South Quarter,
Sandyford
Dublin 18, D18 A264
Phone: +353 (0)1 293 8951
Email: info@elemental.ie

Drawing Title

**ELEMENTAL PETRARCH - MSF
GENERIC WINDOW CILL DETAIL**

Drawing No.

EL-SB-MP14

System:

**EL-MSF
Petrarch**

Size:

A4

Scale:

NTS

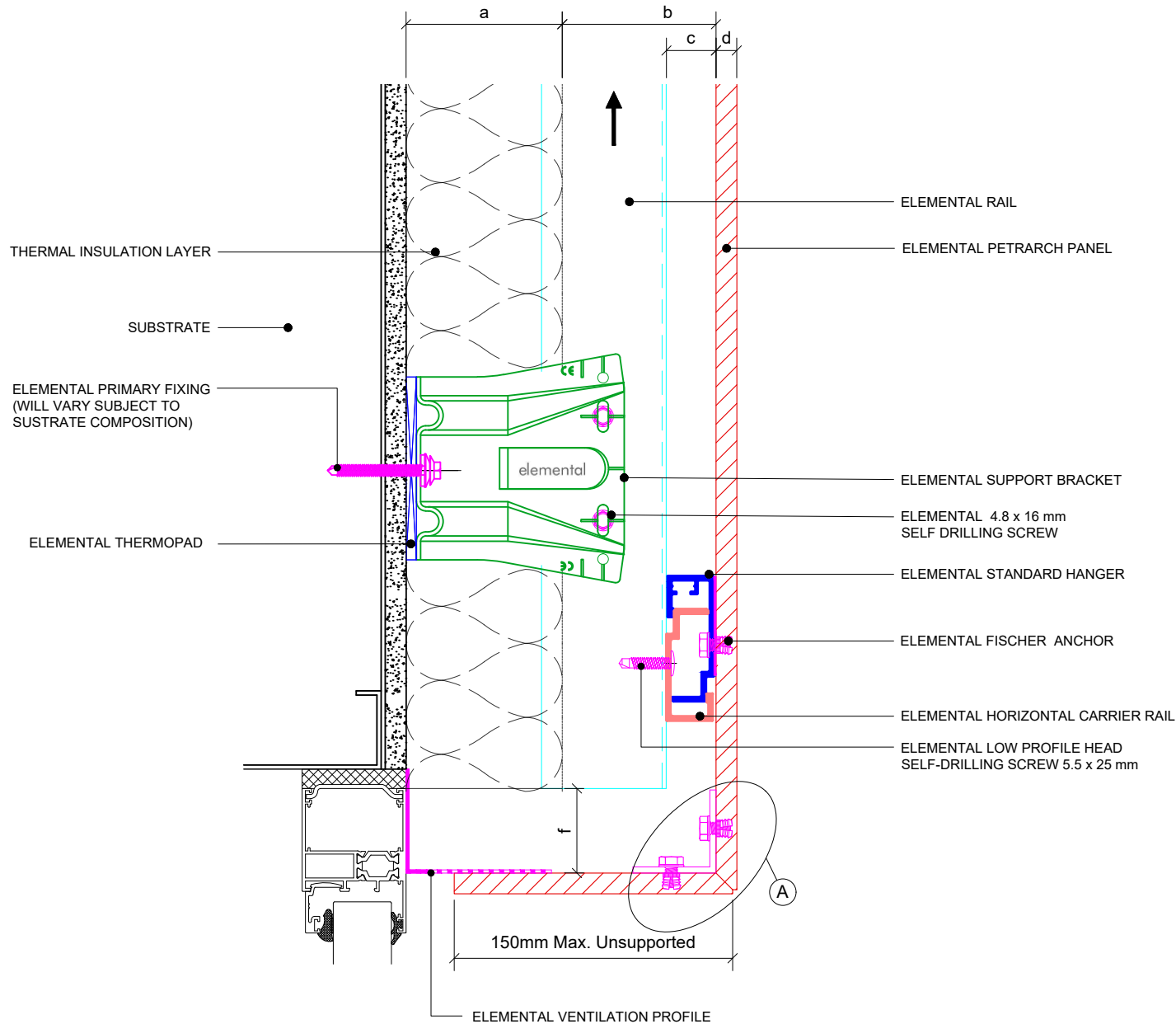
Drawn:

V.C.

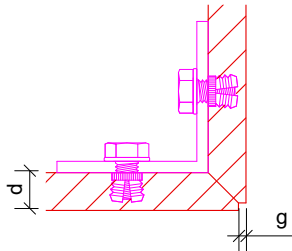
Rev.

01

These drawings are indicative only, for use as a guide. The customer is always responsible for any specific design, structural calculations and calculating exact sizes & quantities of panels. Any project details and calculations supplied by Elemental Architectural Cladding Specialists are provided in good faith and should always be checked and approved by the project engineer responsible. Elemental Architectural Cladding Specialists will not accept any liability should the system be designed / installed incorrectly.

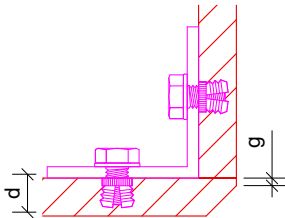


A MSF CORNER DETAIL*



* Please refer to Elemental Petrarch technical guide for panel size limitations.

MSF Chamfered corner option*



* Please refer to Elemental Petrarch technical guide for panel size limitations.

Dimensions

a	Insulation thickness (varies)
b	Free vertical ventilation gap
c	Horizontal Carrier rail and Panel Hanger
d	Panel nominal thickness
e	Ventilation - inlet & outlet ventilation gaps
f	A lift of 20mm will allow the panel hanger to clear the horizontal rail. Therefore we advise a minimum of 25mm clearance gap for ease of installation.
g	2mm Birds Beak Mitre
a+b	Clad Zone



Elemental Architectural Cladding Specialists
#29 The Cubes Offices, Beacon South Quarter,
Sandyford
Dublin 18, D18 A264
Phone: +353 (0)1 293 8951
Email: info@elemental.ie

Drawing Title

**ELEMENTAL PETRARCH - MSF
WINDOW HEAD DETAIL**

Drawing No.

EL-SB-MP15

System:

**EL-MSF
Petrarch**

Size:

A4

Scale:

NTS

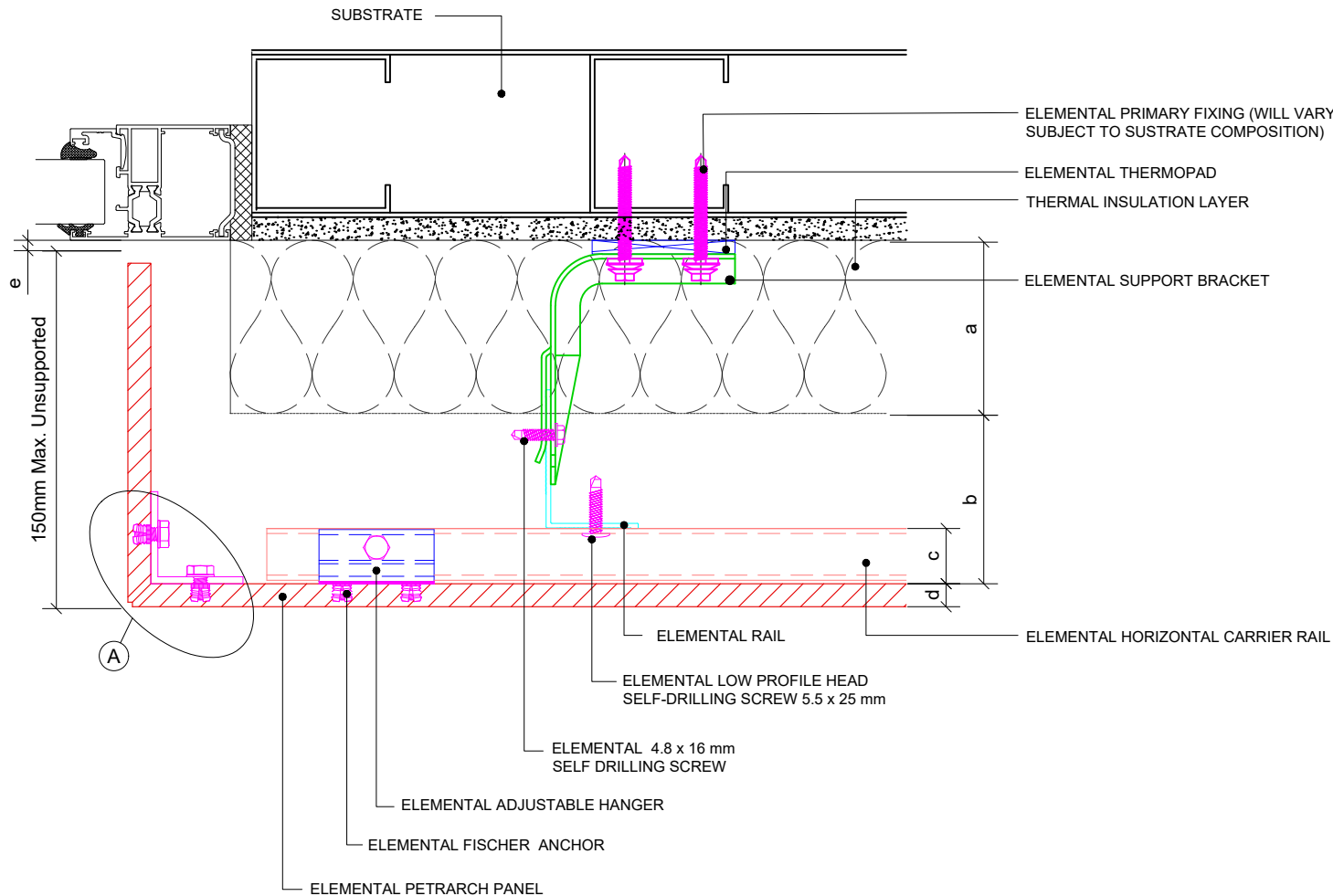
Drawn:

V.C.

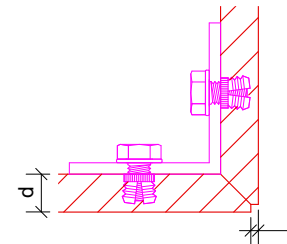
Rev.

01

These drawings are indicative only, for use as a guide. The customer is always responsible for any specific design, structural calculations and calculating exact sizes & quantities of panels. Any project details and calculations supplied by Elemental Architectural Cladding Specialists are provided in good faith and should always be checked and approved by the project engineer responsible. Elemental Architectural Cladding Specialists will not accept any liability should the system be designed / installed incorrectly.

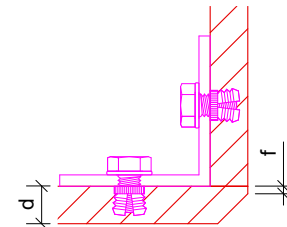


A MSF CORNER DETAIL *



* Please refer to Elemental Petrarch technical guide for panel size limitations.

MSF Chamfered corner option*



* Please refer to Elemental Petrarch technical guide for panel size limitations.

Dimensions

a	Insulation thickness (varies)
b	Free vertical ventilation gap
c	Horizontal Carrier rail and Panel Hanger
d	Panel nominal thickness
e	Panel Abutment - 5mm
f	2mm Birds Beak Mitre
a+b	Clad Zone



Elemental Architectural Cladding Specialists
#29 The Cubes Offices, Beacon South Quarter,
Sandyford
Dublin 18, D18 A264
Phone: +353 (0)1 293 8951
Email: info@elemental.ie

Drawing Title

**ELEMENTAL PETRARCH - MSF
WINDOW JAMB REVEAL DETAIL**

Drawing No.

EL-SB-MP16

System:

**EL-MSF
Petrarch**

Size:

A4

Scale:

NTS

Drawn:

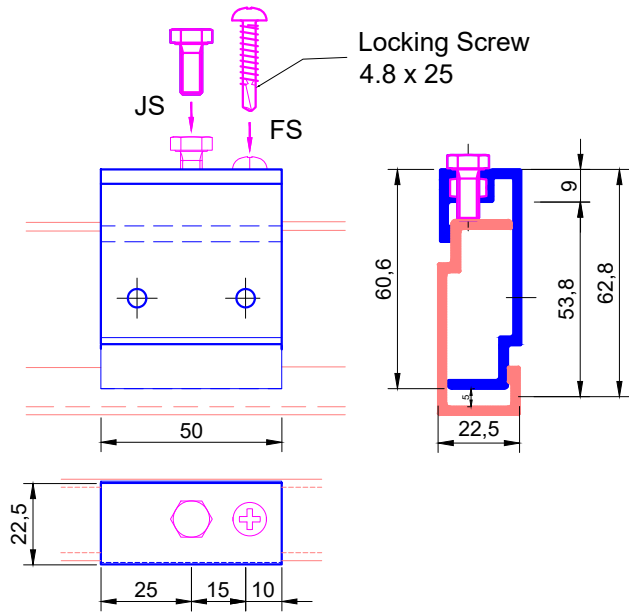
V.C.

Rev.

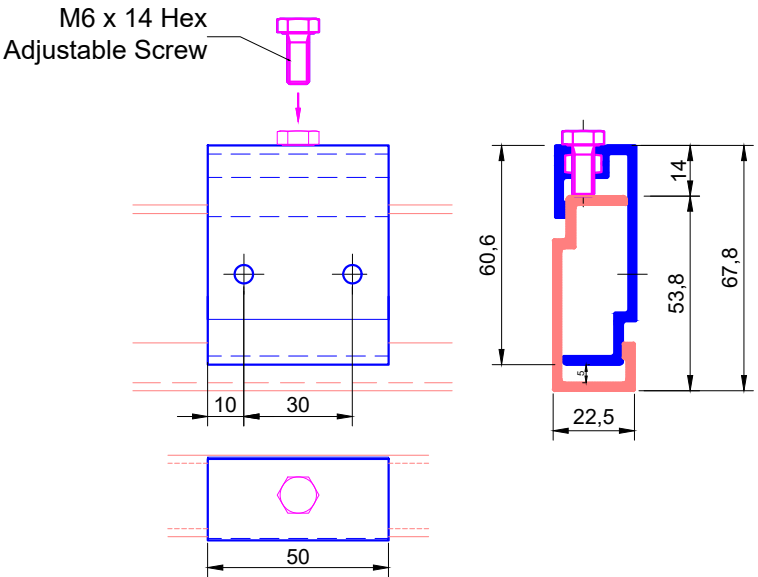
01

Elemental Architectural Cladding Specialists reserve the right to amend details at any time without prior notice. Reproduction or disclosure to third parties is strictly prohibited and can only be attained through signed, written consent from Elemental ACS.

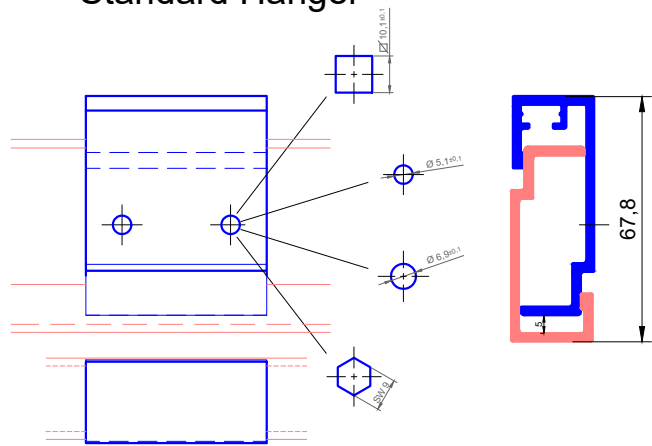
Adjustable Fixed Hanger



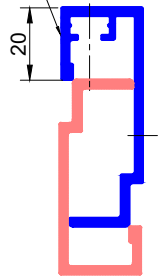
Adjustable Hanger



Standard Hanger



A lift of 20 mm will allow the panel hanger to clear the horizontal rail. We advise a minimum of 25mm clearance gap for ease of installation.



Elemental Architectural Cladding Specialists
#29 The Cubes Offices, Beacon South Quarter,
Sandyford
Dublin 18, D18 A264
Phone: +353 (0)1 293 8951
Email: info@elemental.ie

Drawing Title

**ELEMENTAL PETRARCH - MSF
PANEL HANGERS**

Drawing No.

EL-SB-MP17

System:

**EL-MSF
Petrarch**

Size:

A4

Scale:

NTS

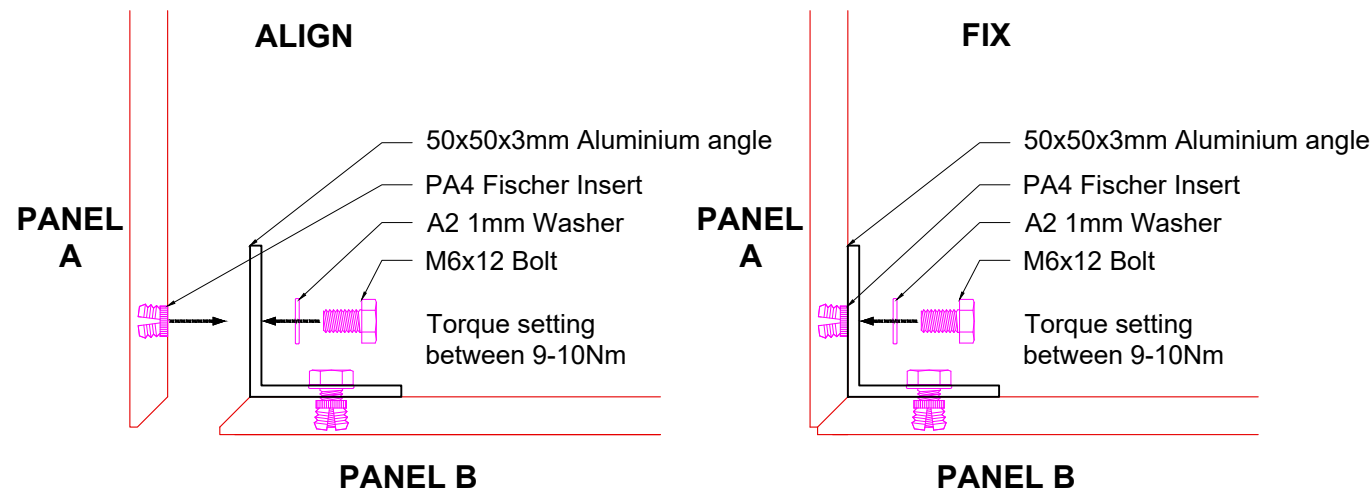
Drawn:

V.C.

Rev.

01

MSF Corner site assembled installation guidelines



MSF Corner Guidelines & Limitations

UNSUPPORTED RETURN *	SUPPORTED RETURN *
R ≤ 150mm F ≤ 3042mm	R ≤ 1200mm F ≤ 1200mm

2 Sided Corner Limitations

3 Sided Corner Limitations

UNSUPPORTED RETURNS *	ONE RETURN SUPPORTED *	BOTH RETURNS SUPPORTED *
R1 ≤ 150mm R2 ≤ 150mm F ≤ 3042mm	R1 ≤ 150mm R2 ≤ 1200mm F ≤ 1200mm	R1 ≤ 1200mm R2 ≤ 1200mm F ≤ 1200mm R1+F+R2 ≤ 2400mm

* **Unsupported Return** - Return panels ≤ 150mm are supported only by the 50x50x3mm angle and inserts.
Supported Return - Additional support is required on returns >150mm (additional set of panel hangers, visible fixings, etc.)